

TOTO®

WT151M / WT152M

DuoFit™ In-Wall Tank System, 1.6GPF & 0.9GPF

FEATURES

- Dual-Max flushing system, low consumption (1.6GPF/6.0LPF & 0.9GPF/3.4LPF)
Avg. flush 1.28GPF
- Adjustable 15" -19" mounting height
- Saves up to 9" of floor space compared to standard floor-mounted toilet
- Support up to 880lbs
- Commercial 2" x 6" or optional residential installation with 2" x 4" wall studs with waste outlet kit
- 1-pc blow molded polyethylene tank to prevent leaks
- 2" x 6" Polyethylene outlet included
- Pre-plumbed for optional Washlet® connection
- Complete with #01 Cotton bolt caps

MODELS

- WT151M - with Pex-C supply line
- WT152M - with copper supply line
- WT151800M#WH - with Pex-C supply line and YT800#WH white push plate
- WT152800M#WH - with copper supply line and YT800#WH white push plate

Optional Push Plates (sold separately)

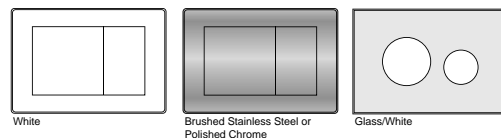
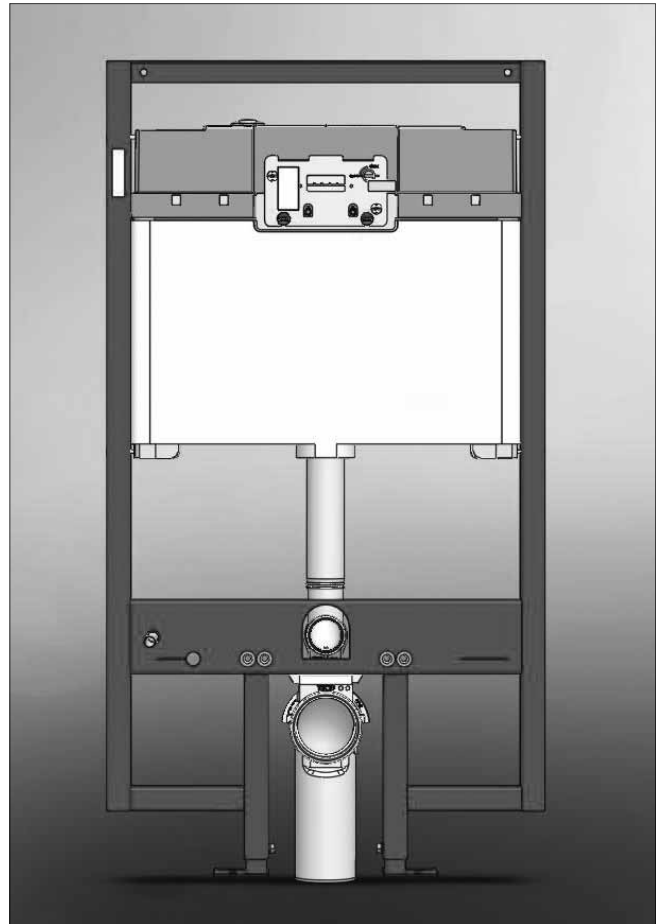
- YT800#WH - White
- YT820#SS - Brushed Stainless Steel
- YT820#CP - Polished Chrome
- YT830#WH- Glass/White

Optional Outlets (sold separately)

- THU343 2" x 4" outlet PVC
- THU335 2" x 6" outlet cast iron
- CT418FG Aquia® wall-hung toilet by TOTO (sold separately)

PRODUCT SPECIFICATION

This universal height, high-efficiency, dual flushing, in-wall tank system toilet shall be 1.6GPF & 0.9GPF. Requires TOTO toilet model CT418FG. In-Wall tank system shall be TOTO Model WT15_____M_____.



CODES/STANDARDS

- Meets and exceeds
 - o Carrier system: ASME A112.6.2
 - o Tank trim: IAPMO PS50, CSA B125.3, ASSE1002
- Certifications: IAPMO(cUPC), and others
- Code compliance: UPC, IPC, NSPC, NPC Canada, and others



Shall be WaterSense certified

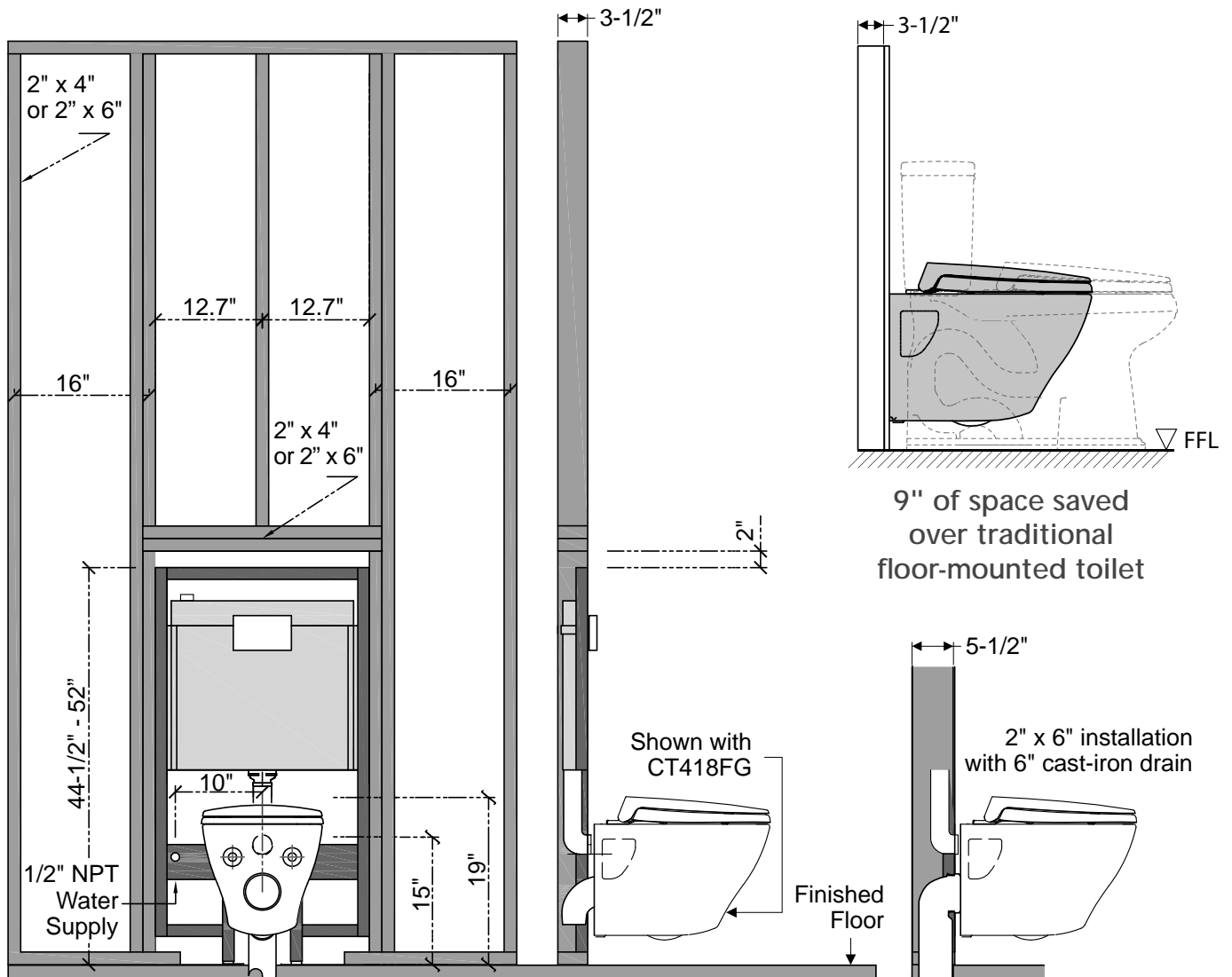
WT151M / WT152M

DuoFit™ In-Wall Tank System, 1.6GPF & 0.9 GPF

SPECIFICATIONS

- Water Use 1.6 GPF & 0.9GPF (6.0 LPF & 3.4LPF)
- Flush System Dual-Max
- Min. Water Pressure 8 psi (static)
- Installation Height 15" to 19" (projected range)
- Warranty One Year Limited Warranty
- Material Various
- Shipping Weight WT151M / WT152M - 38lbs.
- Shipping Dimensions WT151M / WT152M 48" x 26-1/2" x 6"

INSTALLATION NOTES



TOTO®

These dimensions and specifications are subject to change without notice