

# TOTO®

Perfection by Design

## AC Powered (120V AC to 10V DC) Sensor Urinal Flush Valve, Concealed - 1.0 GPF

To be specified:

### Sensor Urinal Flush Valve

- ☐ Complete Set, Surface Mount, Satin Finish  
(14" x 12" cover plate)
  - ☐ Back Spud - TEU2ANS-11 (3/4" V.B.)
  - ☐ Back Spud - TEU2ANS-21 (1- 1/4" V.B.)

Supplied with:

- ☐ Vacuum Breaker & Angle Stop Set -VB13RB-11
  - 3/4" Angle Stop - 10077t6
  - 3/4" Vacuum Breaker - 10075t6
  - Outlet Tube - TH559EDV171
  - Sweat Solder Kit - SJ1
- ☐ Vacuum Breaker & Angle Stop Set -VB13RB-21
  - 3/4" Angle Stop - 10077t6
  - 1-1/4" Vacuum Breaker - 10075t7
  - Outlet Tube - TH559EDV172
  - Sweat Solder Kit - SJ1

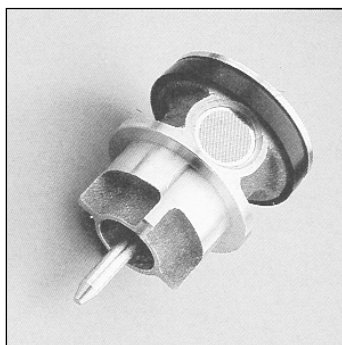
Optional Accessories:

- ☐ Transformer - THU701TR

*Meets the American disability Act Guidelines and ANSI A117.1 requirements for people with disabilities*



TEU2ANS-11



### AUTOMATIC FLUSHING SYSTEM

TOTO, the world leader in advanced plumbing systems, provides sensor operated flush valves for facilities demanding the finest sanitation equipment for busy restrooms. "Hands-free" technology effectively reduces unsanitary conditions from unflushed fixtures.

### SUPERIOR PISTON VALVE

TOTO's piston valve technology is a marked improvement over traditional rubber diaphragm type valves. Longer piston travel and self-cleaning stainless steel debris screen reduce common problems such as continuous running and flooding. The piston seat itself will not warp or mis-seal thus, significantly reducing repair and maintenance costs. A micro-porous cup seal keeps the piston self-lubricated upon each activation with the incoming water supply.

### FUZZY LOGIC MICROPROCESSOR

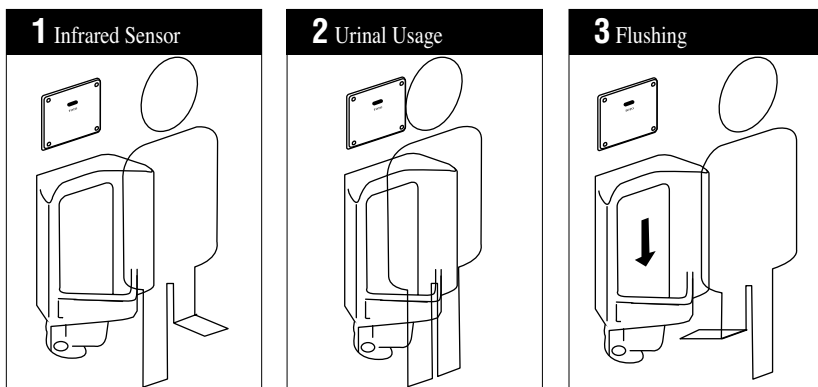
"Fuzzy logic" controlled flushing offers the ultimate water conservation without sacrificing performance. The new TOTO urinal flush valves utilize a fuzzy logic control microprocessor which measures the duration and frequency of use, and flushes an appropriate volume (0.5 - 1.0 gpf). In facilities with periods of frequent use, water conservation is maximized with the use of fuzzy logic technology.

### NEUTRAL ROUGH-IN

TOTO's sensor flush valve has a neutral rough-in, it can be used as a right or left hand rough-in without modifications.





### OPERATING PROCEDURE A sanitary environment without using the hands.



Reliance Commercial Line

# AC Powered(120V AC to 10V DC) Sensor Urinal Flush Valve, Concealed - 1.0 GPF

## SPECIFICATIONS

<b>Product</b>	TEU2ANS-11-Complete Set (3/4" V.B.), Back Spud, Satin Finish TEU2ANS-21-Complete Set (1-1/4" V.B.), Back Spud, Satin Finish
<b>Detection range</b>	Self-adjusting to environment
<b>Detection time</b>	Factory setting at six (6) seconds minimum
<b>Water supply</b>	3/4" NPT
<b>Discharge quantity</b>	Factory setting at 1.0 GPF/3.8 LPF
<b>Urinal type</b>	Low consumption wash down and jetted flush design urinals
<b>Ambient temperature</b>	32°-104°F (0°-40°C)
<b>Supply water pressure</b>	15 psi - 125 psi*
<b>Transformer</b>	THU701TR Class 2 Transformer - Overload protection provided. Primary voltage: 120V, AC, 60Hz -> 10VDC, 1950mA. Maximum 10 units per transformer
<b>Warranty</b>	Limited three (3) year warranty on all component parts. Details available upon request.
<b>Listings</b>	  A.S.S.E. 1037

*These dimensions and specifications are subject to change without notice.*

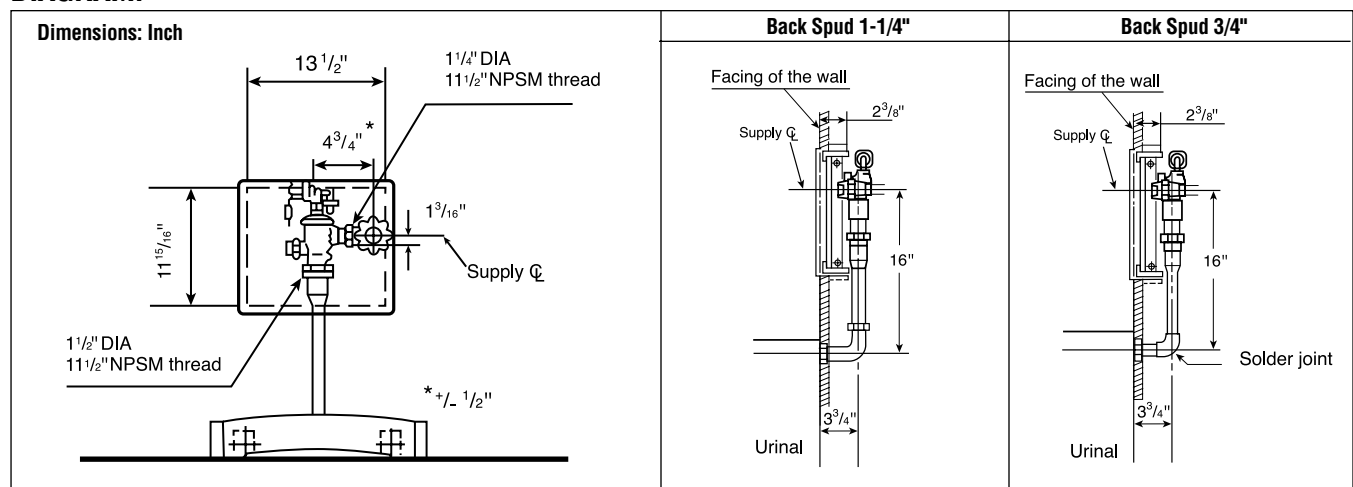
*\*Water pressures over 80 psi are not recommended for most plumbing fixtures.*

## SUGGESTED ENGINEERING SPECIFICATION:

TOTO Model No. \_\_\_\_\_  
Automatic infrared sensor activated, bronze piston toilet flush valve. 14" x 12" cover plate with brushed stainless finish. 10V DC power source required. Electrical sensor components

separated from water body of valve and sealed in a waterproof compartment. Low consumption 1.0 gallons per flush with fuzzy logic. Piston valve with stainless self-cleaning debris screen. Vandal resistant sensor included.

## DIAGRAM:



**TOTO®**  
Perfection by Design

TOTO U.S.A., INC. • 1155 Southern Road, Morrow, GA 30260  
Tel. (770) 282-8686 • Fax. (770) 282-8701 • [www.totousa.com](http://www.totousa.com)  
Printed in U.S.A. © TOTO LTD. 11/02 #H80055

Printed on recycled paper 

REV 11/02