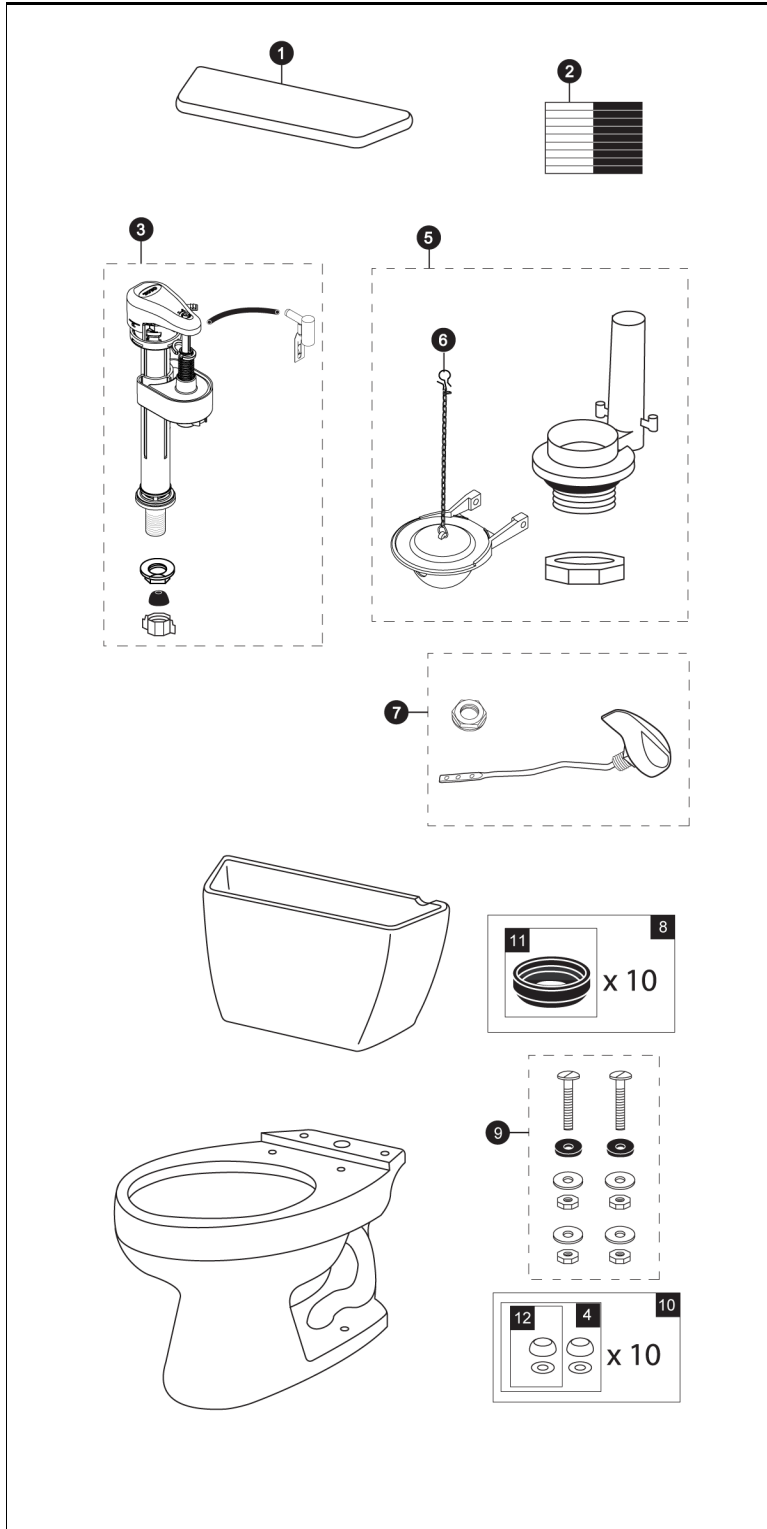


CST744SR
ST743SR
C744S

Drake®

**1.6 Gpf Toilet, Elongated,
G-Max®, 12" Rough-In,
Right Hand Trip Lever**



Items	Parts	Description
1	TCU743CR#01	Tank Lid w/ Velcro Tape - Cotton
	TCU743CR#03	Tank Lid w/ Velcro Tape - Bone
	TCU743CR#11	Tank Lid w/ Velcro Tape - Colonial White
	TCU743CR#12	Tank Lid w/ Velcro Tape - Sedona Beige
	TCU743CR#51	Tank Lid w/ Velcro Tape - Ebony
2	THU107	Velcro Tape
3	TSU53A	Fill Valve
4	THU044S#01	Bolt Cap Sets - Cotton (2 pieces)
	THU044S#03	Bolt Cap Sets - Bone (2 pieces)
	THU044S#11	Bolt Cap Sets - Colonial White (2 pieces)
	THU044S#12	Bolt Cap Sets - Sedona Beige (2 pieces)
5	THU129P-A	Flush Valve
6	THU331S	Flapper w/ Chain
7	THU279#CP	Trip Lever - Right Hand - Chrome Plated
	THU279#BN	Trip Lever - Right Hand - Brushed Nickel
	THU279#PN	Trip Lever - Right Hand - Polished Nickel
	THU279#PB	Trip Lever - Right Hand - Polished Brass
8	THU131	Tank to Bowl Gaskets (10 pieces)
9	TSU01D	Tank Mounting Kit
10	THU098#01	Bolt Cap Sets - Cotton (20 pieces)
	THU098#03	Bolt Cap Sets - Bone (20 pieces)
	THU098#11	Bolt Cap Sets - Colonial White (20 pieces)
	THU098#12	Bolt Cap Sets - Sedona Beige (20 pieces)
	THU098#51	Bolt Cap Sets - Ebony (20 pieces)
11	9BU024E	3" Tank to Bowl Gasket
12	THU044#01	Bolt Cap - Cotton
	THU044#03	Bolt Cap - Bone
	THU044#11	Bolt Cap - Colonial White
	THU044#12	Bolt Cap - Sedona Beige
	THU044#51	Bolt Cap - Ebony

Note:

Product Number Explanations		
Two-Piece Toilet	Tank	Bowl
(CST) Gravity Type Toilet	(ST) Tank	(C) Bowl
(744) Model	(743) Model	(744) Model
(S) G-Max®	(S) G-Max®	(S) G-Max®
(R) Right Hand Trip Lever	(R) Right Hand Trip Lever	

Actual Product may vary slightly from illustration.