



THOMPSON

**INSTALLATION GUIDE:
STANDARD & CUSTOM
RANGE HOODS**

*"True to the spirit of our ancestry,
we bring the allure of metal home.
With all our heart."*

INSTALLATION GUIDE

Standard & Custom Range Hoods

IMPORTANT INFORMATION

1. Please wear provided gloves while handling the range hood.
2. Always handle with extreme care.
 - A. Finish can be damaged easily during installation and field repairs are difficult or impossible
3. Never place hood on an unprotected surface. Please set hood on included pads or a moving blanket.
 - A. Failure to do so can result in scratches to the finish or metal.
4. Follow local building codes:
 - A. Ensure proper height from cooking surface.
 - B. Makeup air kit may be necessary.*
5. Refer to installation instructions from your insert of choice.
6. Always team lift and install range hoods.
7. If masking off the hood is necessary, be sure to use tape that is compatible with acetatebased lacquers.
 - A. Traditional painter's tape will chemically fuse with the lacquer and will severely damage the finish upon removal. We recommend 3m 2020 masking tape, and please follow manufacturer's instructions for clean removal.
8. Thompson range hoods are custom made to order and each design will vary.
 - A. Materials, weights, and dimensions will vary so adjust your installation plans as necessary.
 - B. Please use this guide as a reference only and utilize a licensed and insured installer to complete all work.



**Consult local building codes and IRC section M1503 "makeup air required"*



Customer Service: customerservice@thompsontraders.com or (336) 272-3003.

Thompson reserves the right to make revisions without notice to product specifications.

Visit www.thompsontraders.com to view our full product offerings.

INSTALLATION GUIDE

Standard & Custom Range Hoods

INSTALLATION PROCESS

1) Recommended Equipment

- A. Power Drill
- B. Bit Set:
 - 1. Bit set capable of drilling metal for the hood.
 - 2. Second bit set for the material of the location where the hood will be mounted.
- C. Fasteners:
 - 1. Select based on weight of hood and material of mounting location.
- D. Gloves
- E. Level
- F. Measuring Tape
- G. Marking Implement (e.g. a pencil)
- H. Optional Equipment:
 - 1. French cleat (lumber or metal)
 - 2. Stud finder
 - 3. Masking tape – 3m 2020 or similar (per above, ensure compatibility with lacquer).

2) Inspect Installation Site and Range Hood

- A. Depending on the installation method and blower selected, you may need to cut the horizontal supports across the back or at the top of the range hood.
 - 1. Use caution when handling once horizontal supports are cut because the hood can flex excessively once supports are removed.
- B. Please note, local codes may require an air make up kit if blower exceeds CFM limits.

3) Prepare for Installation

- A. Measure the Hood:
 - 1. Because all hoods are custom made, there can be up to .” of variance vs. specification.
- B. Measure the Mounting Location:
 - 1. Find and mark the studs:
 - i. We recommend that our hoods be attached to a minimum of two (2) studs.
 - ii. It may also be advisable to put down painter’s tape on the wall and make your marks on that for no-clean-up adjustments to your marks and easy removal.
 - 2. If mounting to another substrate, ensure that you have the correct fasteners and hardware to secure the hood.



Customer Service: customerservice@thompsontraders.com or (336) 272-3003.

Thompson reserves the right to make revisions without notice to product specifications.

Visit www.thompsontraders.com to view our full product offerings.

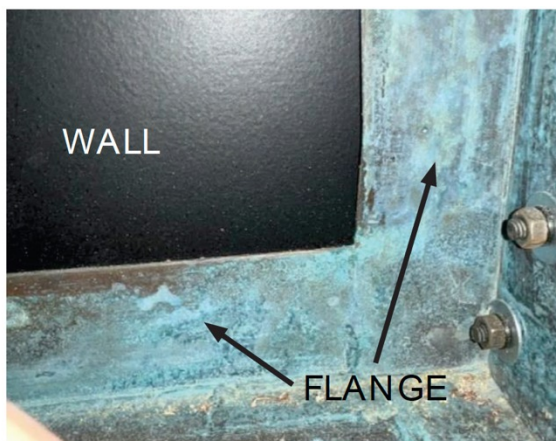
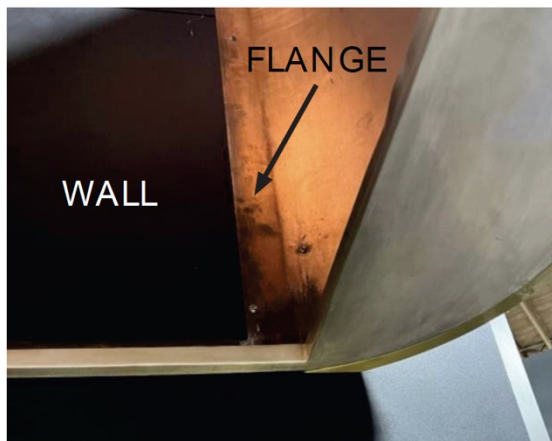
INSTALLATION GUIDE

Standard & Custom Range Hoods

INSTALLATION PROCESS (CONTINUED)

4) Recommended Equipment

- A. Drill Holes in Hood for Mounting.
 - 1. Prepare the Flange:
 - i. Almost all Thompson range hoods are designed with a flange inside the range hood that is inside the hood cavity. This metal can and should be drilled with an appropriate bit to match the size fastener being used. See images below for reference.
- B. Measure the Mounting Location:
 - 1. Measure the mounting location and translate the measurements to the inside of the hood. Drill pilot holes with appropriate bit.
 - 2. Ensure that you do not drill too close to the side wall of the hood as the head of the fastener can deform the metal if overtightened or it hits the side wall.
- C. If a French cleat installation is selected, we still recommend that the hood be fastened to the wall.



5) Lift Hood in Place and Attach Fasteners

6) Secure Range Hood to Vent Insert by Following Insert Manufacturer Instructions

7) Install Any Trim Pieces or Finish Details and Ensure Hood is Securely Installed



Customer Service: customerservice@thompsontraders.com or (336) 272-3003.

Thompson reserves the right to make revisions without notice to product specifications.

Visit www.thompsontraders.com to view our full product offerings.

INSTALLATION GUIDE

Standard & Custom Range Hoods

RANGE HOOD PRE-INSTALLATION CHECKLIST

1) Follow local building codes

- A. Codes vary from location to location, please verify all requirements in the location of the range hood installation.
- B. Verify proper installation height from the cooking surface.
- C. Makeup air kit may be necessary. Reference IRC section M1503 “makeup air required” for further context.

2) Prepare to handle and receive your new hood

- A. Please remember, the bottom surface of the hood is one of the most visible surfaces after installation. Please handle with care to avoid scratches and damage.
- B. Prepare the space by removing clutter and any foreign matter that may damage the finish.
- C. Always use the provided gloves and leave protective packaging in place as long as possible.
- D. Avoid dragging or sliding the range hood across floors or counters.
- E. Always place range hood on a nonabrasive surface such as a moving blanket or provided pads.

3) Follow all instructions from your blower/motor insert

- A. Install insert according to manufacturer's instructions.
- B. Thompson range hoods are designed to fit the insert that was included in the original quote. Any changes could result in improper fit.

4. It is permissible to cut the straps across the back edge of your range hood to aid in installation

- A. Please use caution when moving the hood after straps have been cut.
- B. Improper handling of the hood in this state can put excess strain on the hood.



Customer Service: customerservice@thompsontraders.com or (336) 272-3003.

Thompson reserves the right to make revisions without notice to product specifications.

Visit www.thompsontraders.com to view our full product offerings.