

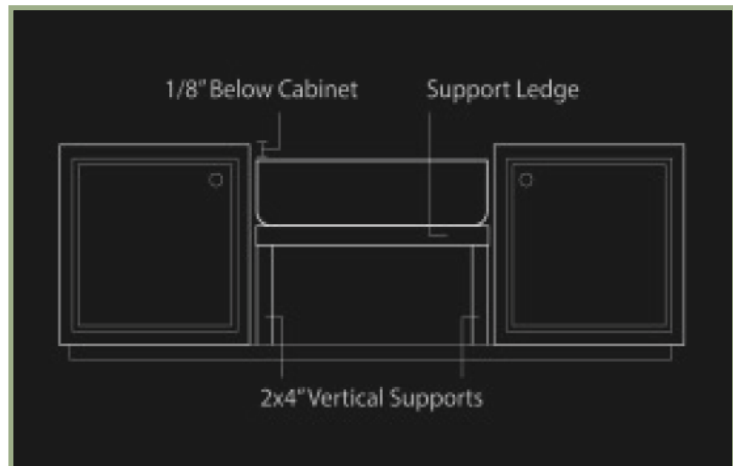


Fireclay sinks are distinct and ready for heavy duty use. Fireclay is coated in a high strength glaze which is resistant to scratches and stains. Fireclay is a very dense material which makes each sink hard to chip as well as very heavy. We recommend using at least two people when lifting the sink. Fireclay sinks will require extra support and modification to existing cabinets.

Important

Thompson Traders' Fireclay sinks require a solid support built into the cabinet and recommend professional installation. We recommend an undermount install with a frame supporting the underside of the sink.

1. Trace the rim of the sink on a piece of craft paper or cardboard. Measure the distance between the edge of the basin and the inside edge of the lip. Add a second line inside the first according to this measurement. Cut on the second line to make your cut out sheet.
2. Measure the front apron of the sink and cut the face of the cabinet to allow the sink to slide in.
3. Install the sink support in the cabinet base. See steps 4 - 6.
4. Install two lengths of 2x4's front to back in the cabinet base. Build out the support structure and ledge for your Fireclay sink to rest on.
5. Install a length of 2x4 vertically under each corner of the sink base to create support legs directly under the sink.
6. The sink should rest 1/8" inch below the top of your cabinets, ensuring plenty of clearance for countertop installation. Use a level to make sure the sink is even and will drain correctly.
7. Place the sink in the support structure. Apply a bead of silicone sealant between the rim of the sink and the countertop to create a watertight seal. Hook up the drain underneath according to the drain instructions and the sink will be ready for use. DO NOT overtighten your disposal drain, this could damage your kitchen sink. Use plumbers putty to make a water tight seal between the drain and the sink.



8. Cut the countertop with your template and install the countertop. Apply a bead of silicone sealant between the rim of the sink and the countertop to create a watertight seal.