



Architect/Engineering Specifications:

Replacement parts for retro "old style" T&S glass filler. Certified to NSF 61–Section 9 and NSF 372.

Job Name _____
 Model Specified _____ Quantity _____
 Variations Specified _____
 Date _____



012665-45
Silicon Grease Tube
(1 Supplied)



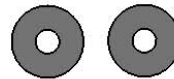
000894-45
Spring
(2 Supplied)



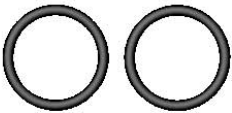
003199-45
Handle Screw
(1 Supplied)



003198-45
Handle Nut
(1 Supplied)



001094-45
Seat Washer
(2 Supplied)



001062-45
O-Ring
(2 Supplied)



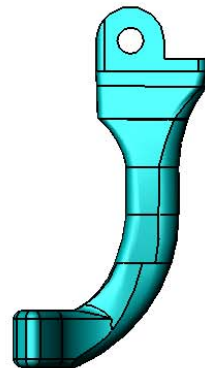
000974-45
Bonnet Washer
(2 Supplied)



001100-45
Stem Packing
(2 Supplied)



003090-45
Outlet Tip
(1 Supplied)



001145-45
Lever Arm
(1 Supplied)

Features & Benefits:

- Lever arm, outlet tip, springs, washers and stem packing
- Material: Lexan plastic lever arm and outlet tip

Product Compliance:

- NSF 61 - Section 9
- NSF 372 (Low Lead Content)



Warranty: One Year (Limited)

Performance Data:

- N/A

