



T&S BRASS AND BRONZE WORKS, INC.

2 Saddleback Cove / P.O. Box 1088
Travelers Rest, SC 29690

Model No.

BF-0176

Item No.

Travelers Rest, SC: 800-476-4103 • Simi Valley, CA: 800-423-0150 • Fax: 864-834-3518 • www.tsbrass.com

This Space for Architect/Engineer Approval

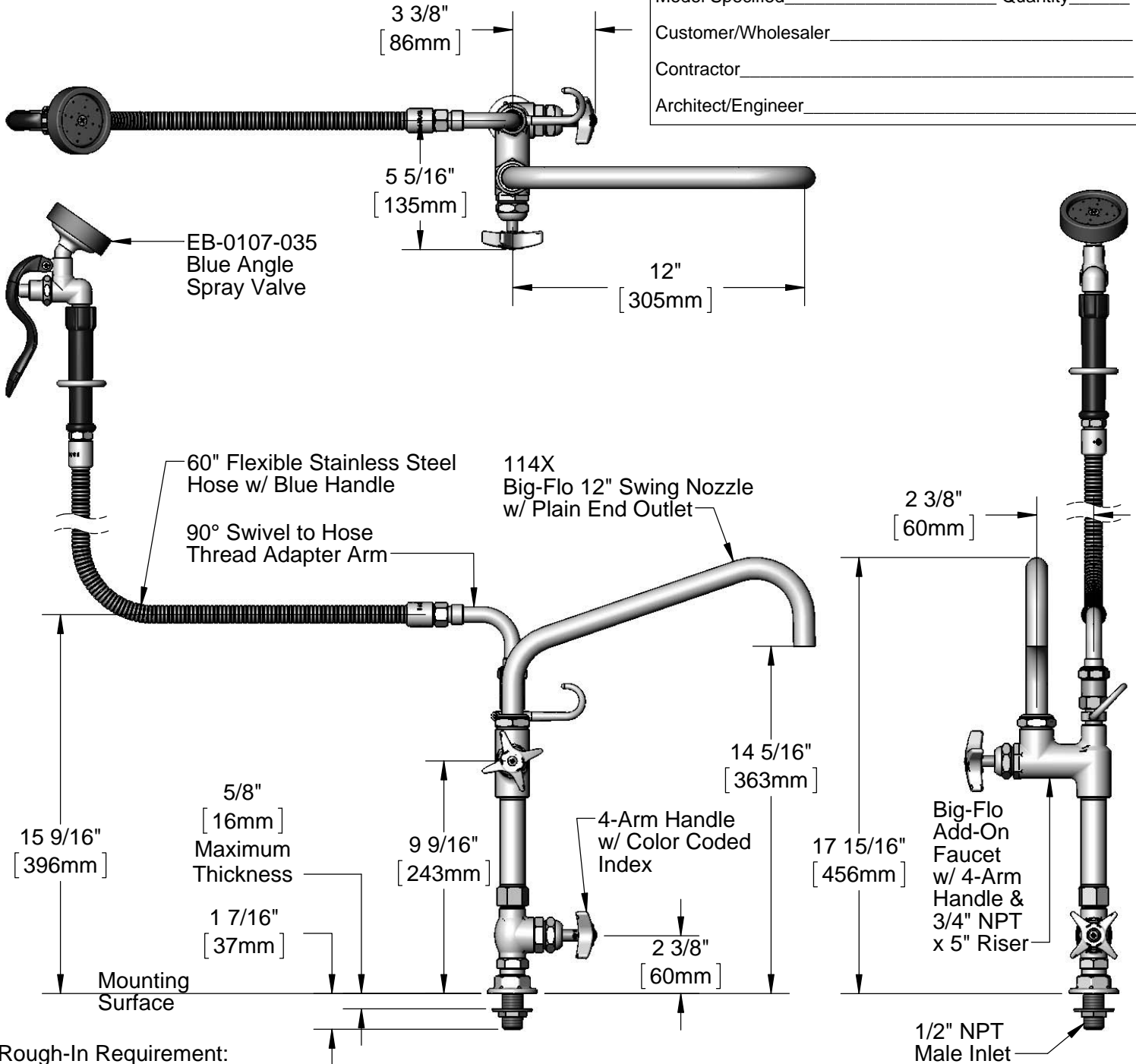
Job Name _____ Date _____

Model Specified _____ Quantity _____

Customer/Wholesaler _____

Contractor _____

Architect/Engineer _____



Rough-In Requirement:
Ø 1" [25mm] Mounting Hole

Product Specifications:

Big-Flo Single Hole Deck Mount Faucet, Big-Flo Cartridge RTC, 4-Arm Handle, Big-Flo Add-On Faucet, 12" Big-Flo Swing Nozzle, 90° Swivel Adapter, 60" Flexible Stainless Steel Hose, Blue Angle Spray Valve & 1/2" NPT Male Inlet

Product Compliance:

ASME A112.18.1 / CSA B125.1
NSF 61 - Section 9
NSF 372 (Low Lead Content)
EPA 2005 Non-Compliant (PRSV)



T&S BRASS AND BRONZE WORKS, INC.

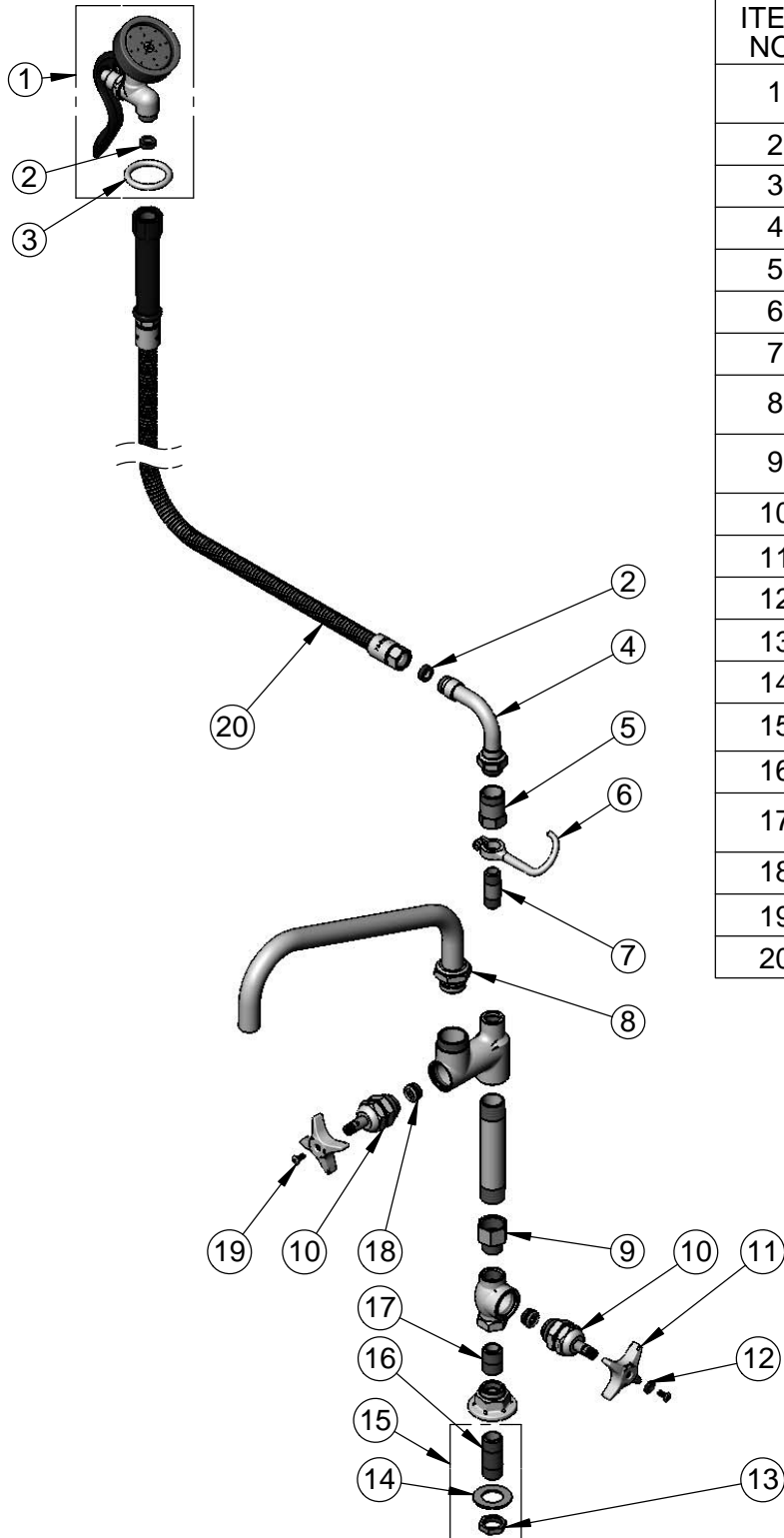
2 Saddleback Cove / P.O. Box 1088
Travelers Rest, SC 29690

Model No.

BF-0176

Item No.

Travelers Rest, SC: 800-476-4103 • Simi Valley, CA: 800-423-0150 • Fax: 864-834-3518 • www.tsbrass.com



ITEM NO.	SALES NO.	DESCRIPTION
1	EB-0107-035	EB-0107-035 Spray Valve Asm
2	010476-45	#27 Washer
3	000907-45	Spray Valve Hold Down Ring
4	034A	Swivel Adapter Arm
5	054X	Swivel Body
6	004R	Finger Hook
7	000356-40	Nipple, 3/8" NPT x 1 3/4"
8	114X	Big-Flo 12" Swing Nozzle w/ Plain End Outlet
9	006112-25	Adapter, 3/4 NPT Female x 1/2 NPT Male
10	006482-40	Big-Flo Cartridge, RTC
11	002521-45	4-Arm Handle
12	001660-45	Blue Index-CW
13	002954-45	Shank Lock Nut
14	000999-45	Brass Lock Washer
15	B-0425	1/2" NPT Supply Nipple Kit
16	000422-20	1/2" NPT Supply Nipple
17	002534-25	Close Nipple, 1/2" NPT
18	000764-20	Seat, Big-Flo
19	000922-45	Lever Handle Screw
20	EB-0060-H	60" Flexible Stainless Steel Hose

Product Specifications:

Big-Flo Single Hole Deck Mount Faucet, Big-Flo Cartridge RTC, 4-Arm Handle, Big-Flo Add-On Faucet, 12" Big-Flo Swing Nozzle, 90° Swivel Adapter, 60" Flexible Stainless Steel Hose, Blue Angle Spray Valve & 1/2" NPT Male Inlet

Product Compliance:

ASME A112.18.1 / CSA B125.1
NSF 61 - Section 9
NSF 372 (Low Lead Content)
EPAct 2005 Non-Compliant (PRSV)