



T&S BRASS AND BRONZE WORKS, INC.

2 Saddleback Cove / P.O. Box 1088
Travelers Rest, SC 29690

Model No.

B-0300-102A-CR

Item No.

Travelers Rest, SC: 800-476-4103 • Simi Valley, CA: 800-423-0150 • Fax: 864-834-3518 • www.tsbrass.com

This Space for Architect/Engineer Approval

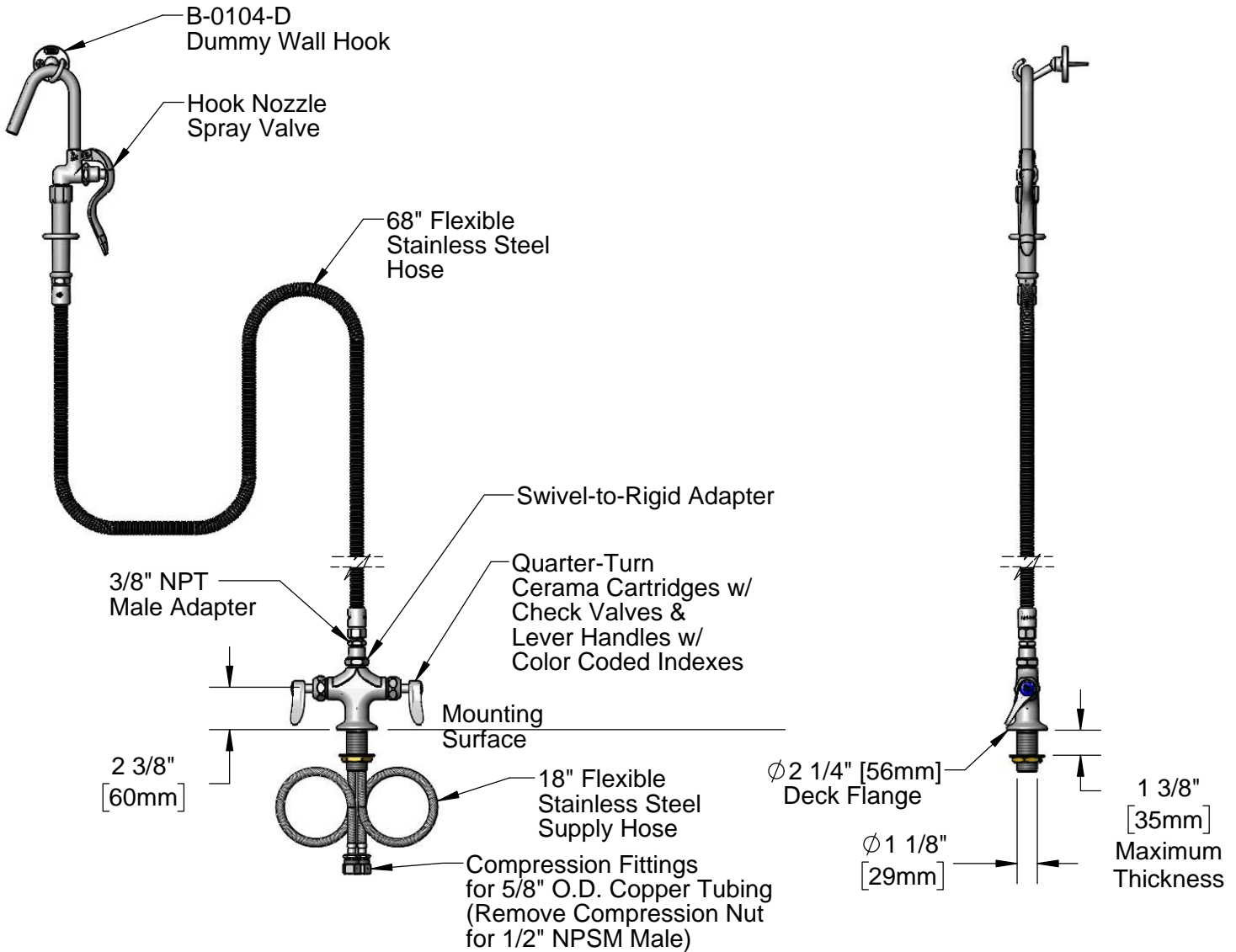
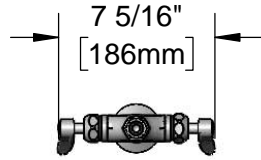
Job Name _____ Date _____

Model Specified _____ Quantity _____

Customer/Wholesaler _____

Contractor _____

Architect/Engineer _____



Rough-In Requirement:
 ϕ 1 1/2" [38mm] Mounting Hole

Product Specifications:

Single Hole Deck Mount Mixing Faucet, Quarter-Turn Cerama Cartridges w/ Check Valves, Lever Handles, 68" Flexible Stainless Steel Hose, Hook Spray Valve & (2) Flexible Stainless Steel Supply Hoses

Product Compliance:

ASME A112.18.1 / CSA B125.1
 NSF 61 - Section 9
 NSF 372 (Low Lead Content)



T&S BRASS AND BRONZE WORKS, INC.

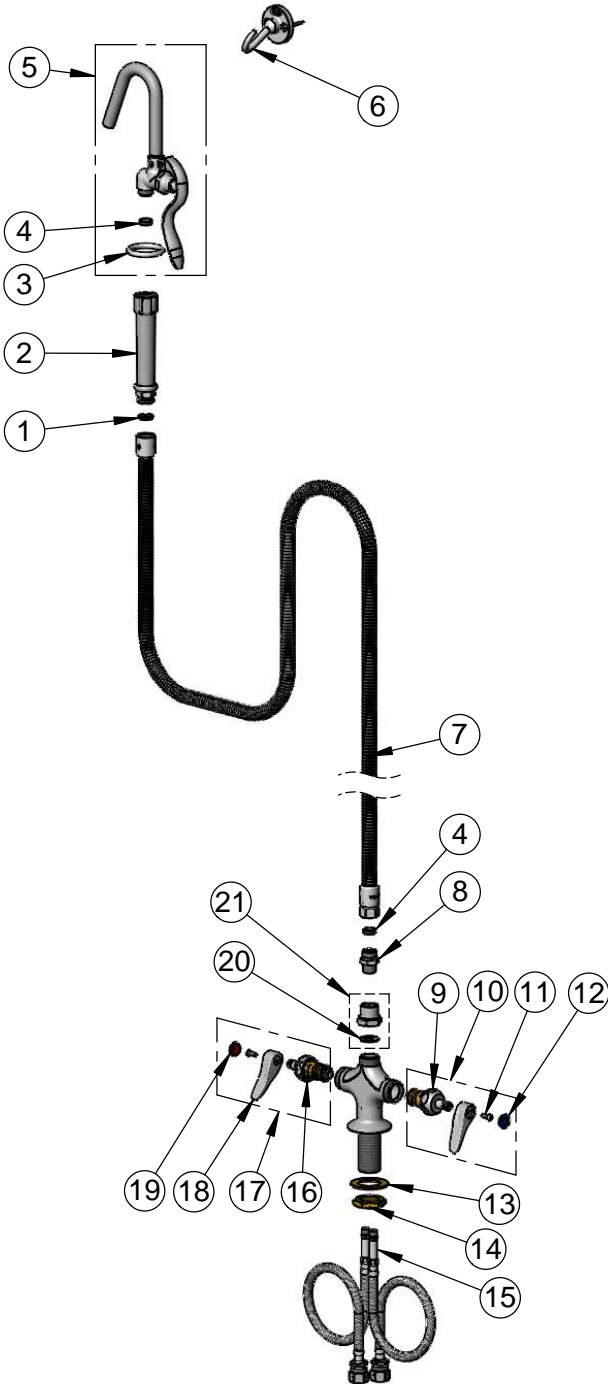
2 Saddleback Cove / P.O. Box 1088
Travelers Rest, SC 29690

Model No.

B-0300-102A-CR

Item No.

Travelers Rest, SC: 800-476-4103 • Simi Valley, CA: 800-423-0150 • Fax: 864-834-3518 • www.tsbrass.com



| ITEM NO. | SALES NO. | DESCRIPTION |
|----------|-------------|---|
| 1 | 001014-45 | Washer, B-0100 Hose Barrel |
| 2 | 002987-40 | Grip Handle |
| 3 | 000907-45 | Spray Valve Hold Down Ring |
| 4 | 010476-45 | #27 Washer |
| 5 | 002851-40 | Hook Nozzle & Spray Valve |
| 6 | B-0104-D | Dummy Wall Hook Bracket |
| 7 | B-0068-H2A | 68" Flexible Stainless Steel Hose, Less Handle |
| 8 | 053A | Adapter, 3/8" NPT Male |
| 9 | 012395-25NS | Quarter-Turn Cerama Cartridge w/ Check Valve, LTC |
| 10 | 012447-25NS | Quarter-Turn Cerama Cartridge w/ Check Valve, Handle, Blue Index & Screw, LTC |
| 11 | 000925-45 | Lab Handle Screw |
| 12 | 018506-19NS | Blue Button Index, Press-in |
| 13 | 002290-45 | Lock Washer |
| 14 | 000965-45 | Lock Nut |
| 15 | 012534-45 | 18" Flexible Supply Hose (2) |
| 16 | 012394-25NS | Quarter-Turn Cerama Cartridge w/ Check Valve, RTC |
| 17 | 012446-25NS | Quarter-Turn Cerama Cartridge w/ Check Valve, Handle, Red Index & Screw, RTC |
| 18 | 001638-45NS | Lever Handle (New Style) |
| 19 | 001193-19NS | Red Button Index, Press-in |
| 20 | 001049-45 | Washer |
| 21 | B-0413 | Adapter, Swivel to Rigid |

Product Specifications:

Single Hole Deck Mount Mixing Faucet, Quarter-Turn Cerama Cartridges w/ Check Valves, Lever Handles, 68" Flexible Stainless Steel Hose, Hook Spray Valve & (2) Flexible Stainless Steel Supply Hoses

Product Compliance:

ASME A112.18.1 / CSA B125.1
NSF 61 - Section 9
NSF 372 (Low Lead Content)