

5696TRM  
Tub/Shower Trim  
**Specification Submittal**

Location:

**Model Numbers**

- 5696TRM**  
Tub/Shower Trim
- Valve Options:**
- 261 series Temptrol shower valve with TRM modifier
- 161 series Temptrol shower valve requires TC modifier
- 3DIVBODYSTRT

**Feature Highlights**

- Oak Tub/Shower/Hand Shower Trim.
- Requires Temprol pressure balancing shower valve.
- 30" Slide bar.
- Separate three function diverter.
- Non-diverter tub spout.
- 60" flexible metal hose.
- Single-Mode HydroMersion™ hand shower with Non-Positive Shutoff (NPSO).
- Single-Mode HydroMersion showerhead with Non-Positive Shutoff(NPSO).
- Standard 2.0 gpm (7.6 L/min) flow restrictor.
- Components made from metal and nonmetal materials, plated in standard Polished Chrome finish.

**Compliance**

- ASME A112.18.1/CSA B125.1.
- WaterSense 1.5 gpm (5.7 L/min) 2.0 gpm (7.6 L/min).
- Lever handle meets ADA requirements for operation.

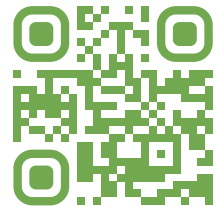


**Modifications**

- 15** 1.5 gpm (5.7 L/min) flow restrictor
- L1** Less showerhead
- L2** Less hand shower
- L3** Less showerhead and hand shower
- L4** Less showerhead, shower arm & flange
- L5** Less hand shower system (less bar/ cradle, hose, wand and elbow)
- L7** Less handle
- TC** Test Cap Trim (includes TA-10&T-12A) *used with 161 series Temptrol Valve*
- BBZ** Brushed Bronze finish
- MB** Matte Black finish
- STN** Satin Nickel finish

**Warranty**

**Limited Lifetime** - for residential installations.  
**10 Years** - for commercial/industrial installations.  
Refer to [www.symmons.com/warranty](http://www.symmons.com/warranty) for complete warranty information.



**SKU Builder**

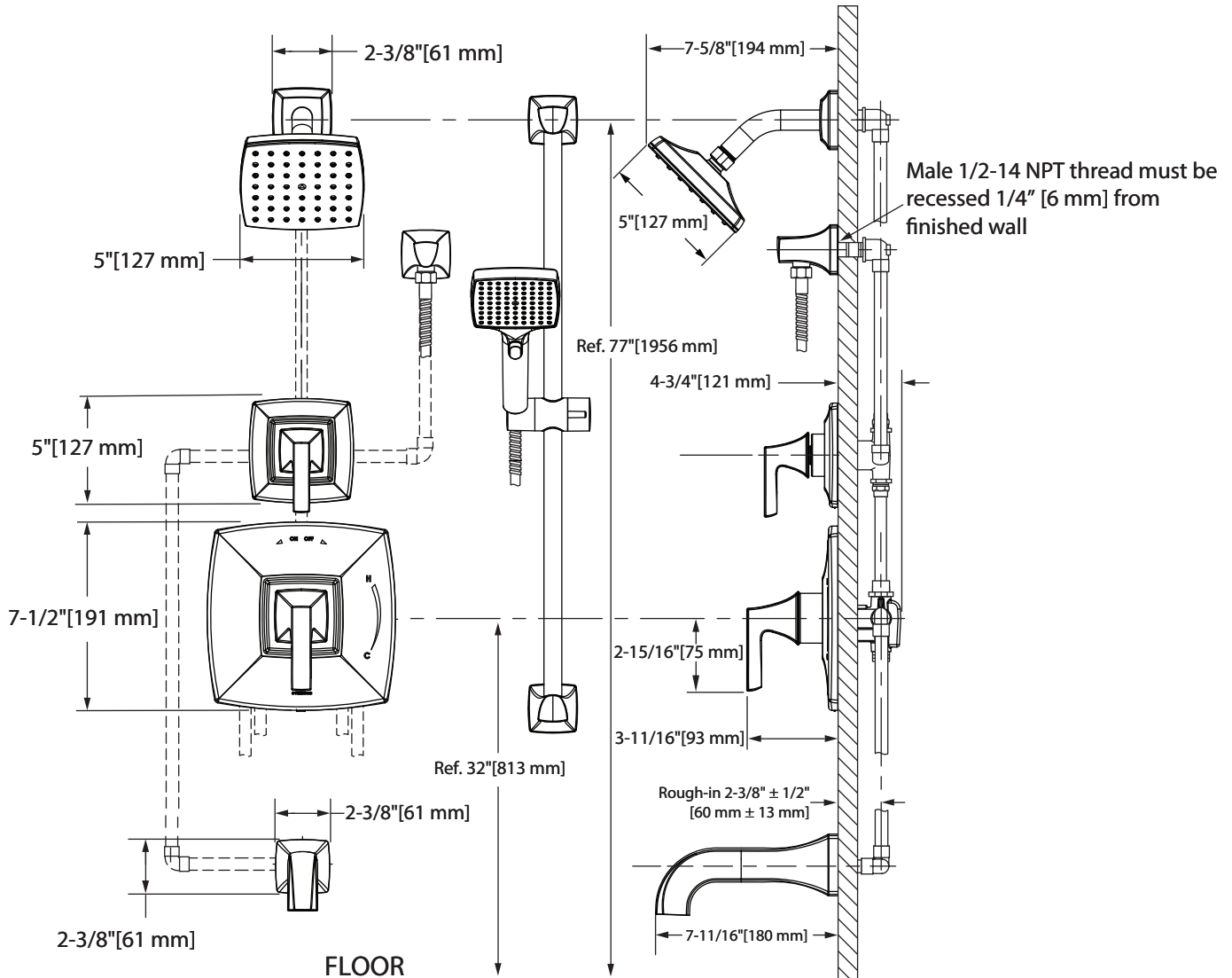
Series	Finish	Modifier	Flow Rate	Trim (required)	Test Cap	Final SKU
5696	MB	L3		TRM	TC	5696MBL3TRMTC
5696	MB			TRM		5696MBTRM

**Note:** No more than two modifiers (L1-L7) permitted when ordering. Modifiers will list in numerical order.

**Architectural/Engineering Specification**

Symmons Oak Tub and Shower Trim \_\_\_\_\_ Includes Oak Tub, Shower and Hand Shower Trim for Temptrol® Pressure Balancing Shower Valve. Features include adjustable stop screw to limit handle rotation, 30" Slide bar, separate three function diverter, non-diverter tub spout, 60" flexible metal hose, single-mode HydroMersion hand shower with NPSO, single-mode Hydromersion showerhead, standard 2.0 gpm (7.6 L/min) flow restrictor. Components made from metal and nonmetal materials, plated in standard Polished Chrome finish. 10 Year Commercial Warranty. ASME A112.18.1/CSA B125.1 and WaterSense 1.5/2.0 complaint. Lever handle meets ADA requirements for operation. Available options: 15 = 1.5 gpm (5.7 L/min) flow restrictor, L1 = Less showerhead, L2 = Less hand shower, L3 = Less showerhead and hand shower, L4 = Less showerhead, shower arm & flange, L5 = Less hand shower system (less bar/ cradle, hose, wand and elbow), L7 = Less handle, TC = Test Cap Trim, BBZ = Brushed Bronze finish, MB = Matte Black finish, STN = Satin Nickel finish.

## Dimensions



### Notes:

- 1) Valve body and piping not included and shown as reference only.
- 2) Plaster shield (p/n T-176) for dry wall, plaster or other type walls 1/2" or greater.
- 3) All dimensions measured from nominal rough-in (see 2-3/8" ± 1/2" [60 mm ± 13 mm] as reference).
- 4) Dimensions subject to change without notice.