


5695TRM  
Shower/Hand Shower Trim  
**Specification Submittal**

Location:

Model Numbers	Modifications
<p><input type="checkbox"/> <b>5695TRM</b> Shower/Hand Shower Trim, Temptrol Pressure Balancing Shower Valve ordered separately</p> <p><b>Valve Options:</b> -261 Series Temptrol Shower Valve with TRM modifier -161 Series Temptrol Shower Valve requires TC modifier -2DIVBODYSRT Diverter Valve</p>	<p><input type="checkbox"/> <b>15</b>  1.5 gpm (5.7 L/min) flow restrictor</p> <p><input type="checkbox"/> <b>L1</b> Less showerhead</p> <p><input type="checkbox"/> <b>L2</b> Less hand shower wand</p> <p><input type="checkbox"/> <b>L3</b> Less showerhead and hand shower wand</p> <p><input type="checkbox"/> <b>L4</b> Less showerhead, shower arm, and flange</p> <p><input type="checkbox"/> <b>L5</b> Less hand shower system (less bar/cradle, hose, wand, and elbow)</p> <p><input type="checkbox"/> <b>L7</b> Less handle</p> <p><input type="checkbox"/> <b>TC</b> Test Cap Trim (includes TA-10&amp;T-12A) used with 161 series Temptrol Valve</p> <p><input type="checkbox"/> <b>BBZ</b> Brushed Bronze finish</p> <p><input type="checkbox"/> <b>MB</b> Matte Black finish</p> <p><input type="checkbox"/> <b>STN</b> Satin Nickel finish</p>
Feature Highlights	
<ul style="list-style-type: none"> <li>• Oak Shower/Hand Shower Trim.</li> <li>• Requires Temptrol® Pressure-Balancing Shower Valve.</li> <li>• Requires Symmons Dual Outlet Diverter Valve.</li> <li>• Metal lever handles.</li> <li>• 30" slide bar for hand shower wand.</li> <li>• 60" flexible metal hose.</li> <li>• Single-Mode HydroMersion™ hand shower with Non-Positive Shutoff (NPSO).</li> <li>• Single-Mode HydroMersion showerhead with Non-Positive Shutoff(NPSO).</li> <li>• Standard flow rate, 2.0 gpm (7.6 L/min).</li> <li>• Components made from metal and nonmetal materials, plated in standard Polished Chrome finish.</li> </ul>	
Compliance	
<ul style="list-style-type: none"> <li>• ASME A112.18.1/CSA B125.1</li> <li>• WaterSense 1.5 gpm (5.7 L/min) 2.0 gpm (7.6 L/min)</li> <li>• Lever handle meets ADA requirements for operation.</li> </ul>	<p><b>Warranty</b></p> <p><b>Limited Lifetime</b> - for residential installations.</p> <p><b>10 Years</b> - for commercial/industrial installations.</p> <p>Refer to <a href="http://www.symmons.com/warranty">www.symmons.com/warranty</a> for complete warranty information.</p> 



**SKU Builder**

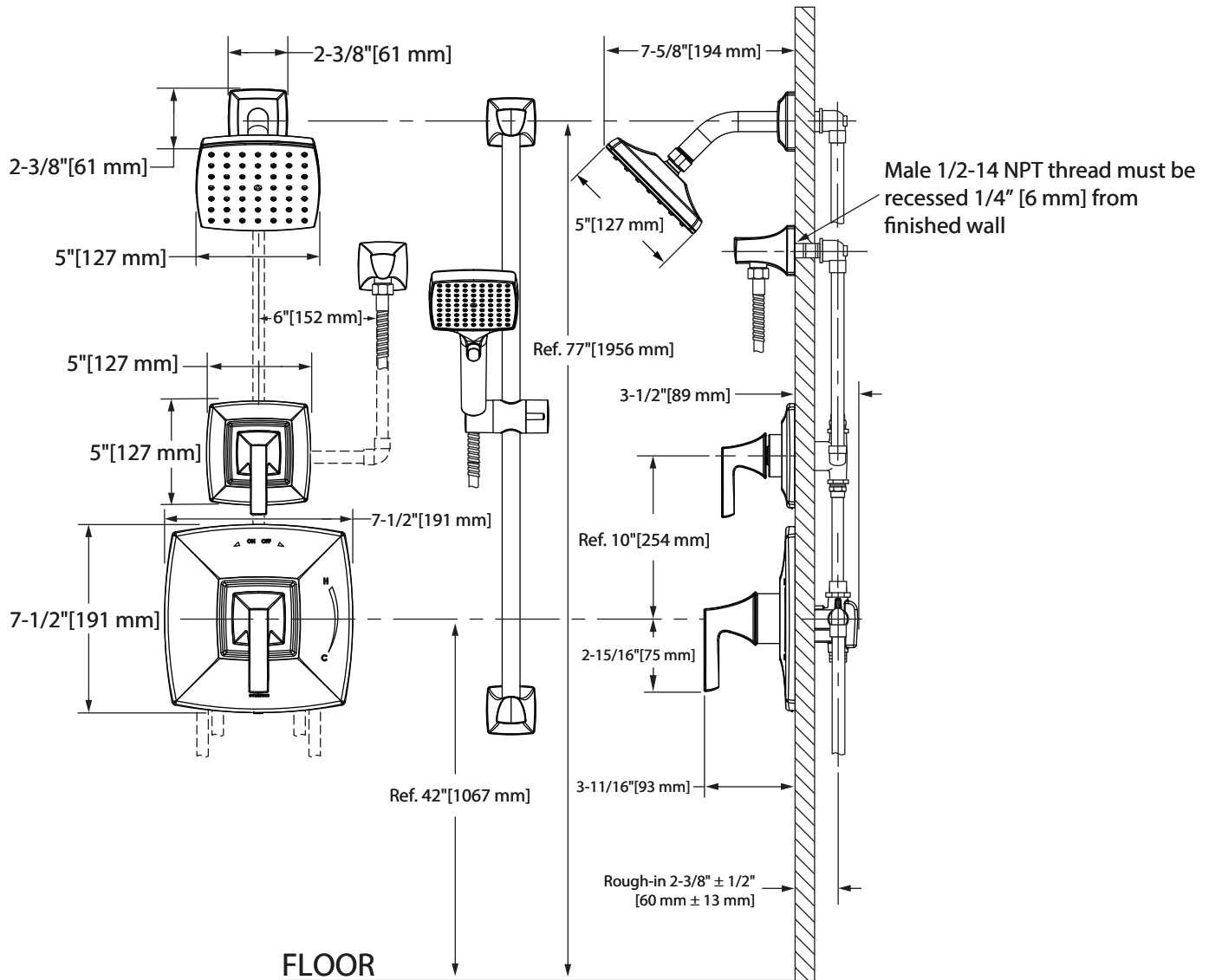
Series	Finish	Modifier	Flow Rate	Trim (required)	Test Cap	Final SKU
5695	MB	L2		TRM	TC	5695MBL2TRMTC
5695	MB			TRM		5695MBTRM

**Note:** No more than two modifiers (L1-L7) permitted when ordering. Modifiers will list in numerical order.

**Architectural/Engineering Specification**

Symmons Oak Shower and Hand Shower Trim \_\_\_\_\_ Includes Oak Shower and Hand Shower Trim powered by Temptrol® Pressure Balancing Shower Valve and Symmons Dual Outlet Diverter Valve. Features include metal lever handles, 30" slide bar for hand shower wand, dual checks for backflow protection, 60" flexible metal hose, single-mode HydroMersion hand shower with NPSO, single-mode HydroMersion showerhead, standard flow rate, 2.0 gpm (7.6 L/min). Components made from metal and nonmetal materials, plated in standard Polished Chrome finish. For optional in-line vacuum breaker order p/n EF-109. 10 Year Commercial Warranty. ASME A112.18.1/CSA B125.1 and WaterSense 1.5/2.0 complaint. Lever handle meets ADA requirements for operation. Available options: 15 = 1.5 gpm (5.7 L/min) flow restrictor, L2 = Less handshower, L7 = Less handle, TC = Test Cap Trim, BBZ = Brushed Bronze finish, MB = Matte Black finish, STN = Satin Nickel finish.

## Dimensions



### Notes:

- 1) Valve body and piping not included and shown as reference only.
- 2) Plaster shield (p/n T-176) for dry wall, plaster or other type walls 1/2" or greater.
- 3) All dimensions measured from nominal rough-in (see 2-3/8" ± 1/2" [60 mm ± 13 mm] as reference).
- 4) Dimensions subject to change without notice.