






3695TRM  
Shower/Hand Shower Trim  
**Specification Submittal**

Location:

Model Numbers	Modifications
<input type="checkbox"/> <b>3695TRM</b> Shower/Hand Shower Trim  <b>Valve Options:</b> -261 Series Temptrol Shower Valve with TRM modifier -161 Series Temptrol Shower Valve requires TC modifier -2DIVBODYSRT	<input type="checkbox"/> <b>15</b>  1.5 gpm (5.7 L/min) flow restrictor <input type="checkbox"/> <b>175</b> 1.75 gpm (6.6 L/min) flow restrictor <input type="checkbox"/> <b>TC</b> Test Cap Trim (includes TA-10&T-12A) <i>used with 161 series Temptrol Shower Valve</i> <input type="checkbox"/> <b>L1</b> Less showerhead <input type="checkbox"/> <b>L2</b> Less hand shower (wand only) <input type="checkbox"/> <b>L3</b> Less showerhead and hand shower (head and wand only) <input type="checkbox"/> <b>L4</b> Less head, arm, and flange <input type="checkbox"/> <b>L5</b> Less hand shower system <input type="checkbox"/> <b>L7</b> Less handle <input type="checkbox"/> <b>BBZ</b> Brushed Bronze finish <input type="checkbox"/> <b>MB</b> Matte Black finish <input type="checkbox"/> <b>STN</b> Satin Nickel finish
Feature Highlights	
<ul style="list-style-type: none"> <li>Shower/Hand Shower Trim.</li> <li>Adjustable stop screw to limit handle rotation.</li> <li>30" Slide bar.</li> <li>In-line vacuum breaker.</li> <li>60" flexible metal hose.</li> <li>Single mode hand shower with NPSO.</li> <li>Single mode showerhead.</li> <li>Standard 2.0 gpm (7.6 L/min) flow restrictor.</li> <li>Components made from metal and nonmetal materials plated in standard polished chrome finish.</li> </ul>	
Compliance	Warranty
<ul style="list-style-type: none"> <li>ASME A112.18.1/CSA B125.1</li> <li>WaterSense 1.5 gpm (5.7 L/min) 1.75 gpm (6.6 L/min) 2.0 gpm (7.6 L/min)</li> <li>Lever handle meets ADA requirements for operation</li> </ul>   	<p><b>Limited Lifetime</b> - to the original end purchaser in consumer/residential installations.</p> <p><b>10 Years</b> - for commercial/industrial installations. Refer to <a href="http://www.symmons.com/warranty">www.symmons.com/warranty</a> for complete warranty information.</p> 

**SKU Builder**

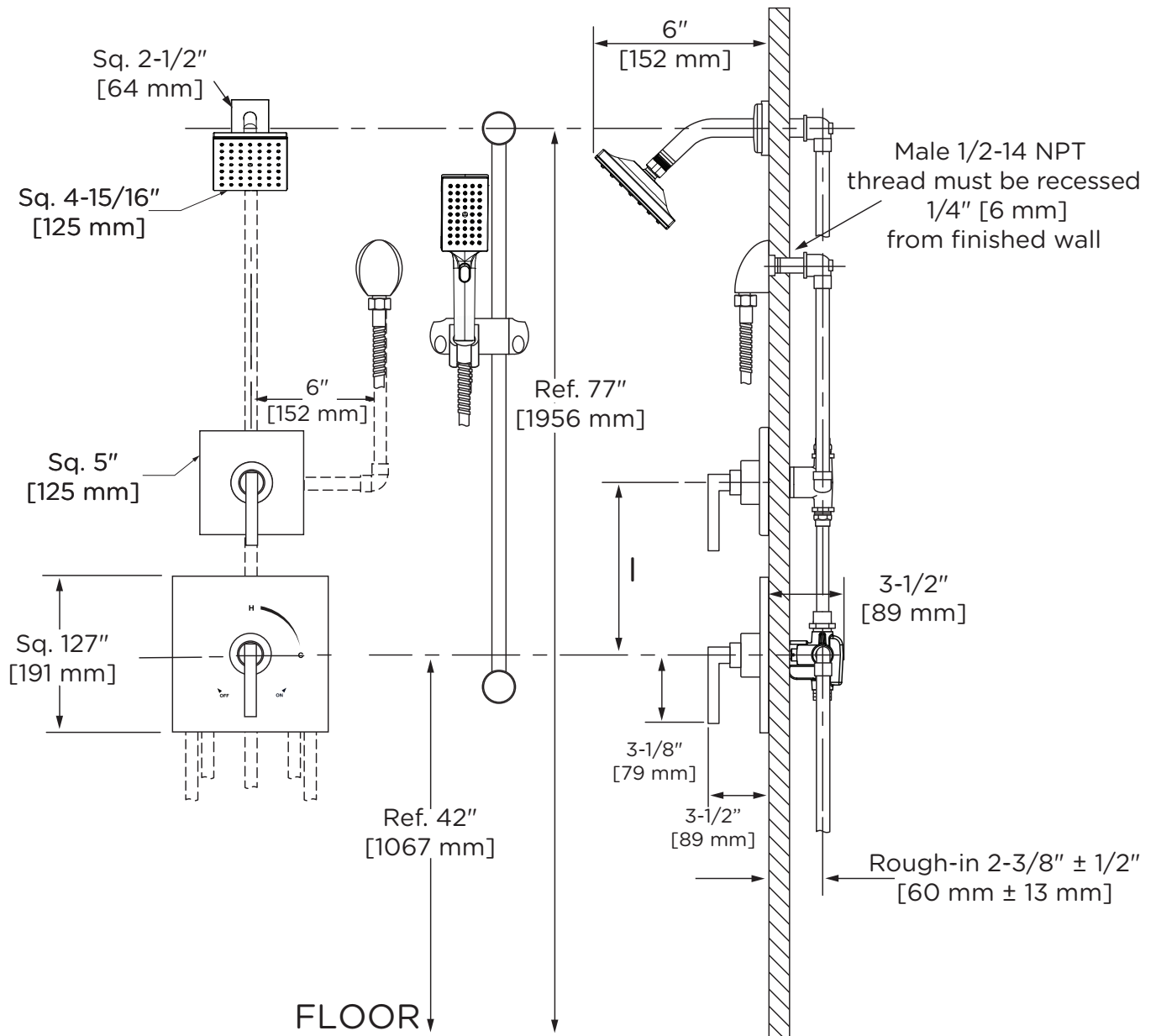
Series	Finish	Modifier	Flow Rate	Trim (required)	Test Cap	Final SKU
3695	STN			TRM		3695STNTRM
3695	MB	L3	15	TRM	TC	3695MBL315TRMTC

**Note:** No more than two modifiers (L1-L7) and modifier order will follow numerical order.

**Architectural/Engineering Specification**

Symmons Duro Shower and Hand Shower System \_\_\_\_\_ Includes Duro Shower and Hand Shower System powered by the Temptrol® Pressure Balancing valve. Features adjustable stop screw to limit handle rotation, 30" slide bar, in-line vacuum breaker, 60" flexible metal hose, single mode hand shower with NPSO, single mode showerhead, and standard 2.0 gpm (7.6 L/min) flow restrictor. Components made from metal and nonmetallic materials plated in standard polished chrome finish. 10 Year Commercial Warranty. Lever handle meets ADA requirements for operation. ASME A112.18.1/CSA B125.1, WaterSense 1.5 gpm (5.7 L/min), 1.75 gpm (6.6 L/min), and 2.0 gpm (7.6 L/min) compliant. Available options: "15 - 1.5 gpm (5.7 L/min) flow restrictor", "175 - 1.75 gpm (6.6 L/min) flow restrictor", "L1 - Less showerhead", "L2 - Less hand shower (wand only)", "L3 - Less showerhead and hand shower (head and wand only)", "L4 - Less head, arm, and flange", "L5 - Less hand shower system", "L7 - Less handle", "BBZ - Brushed Bronze finish", "MB - Matte Black finish", "STN - Satin Nickel finish", and "TC - Test Cap Trim".

## Dimensions



### Notes:

- 1) All dimensions measured from nominal rough-in.
- 2) Dimensions are subject to change without notice.