



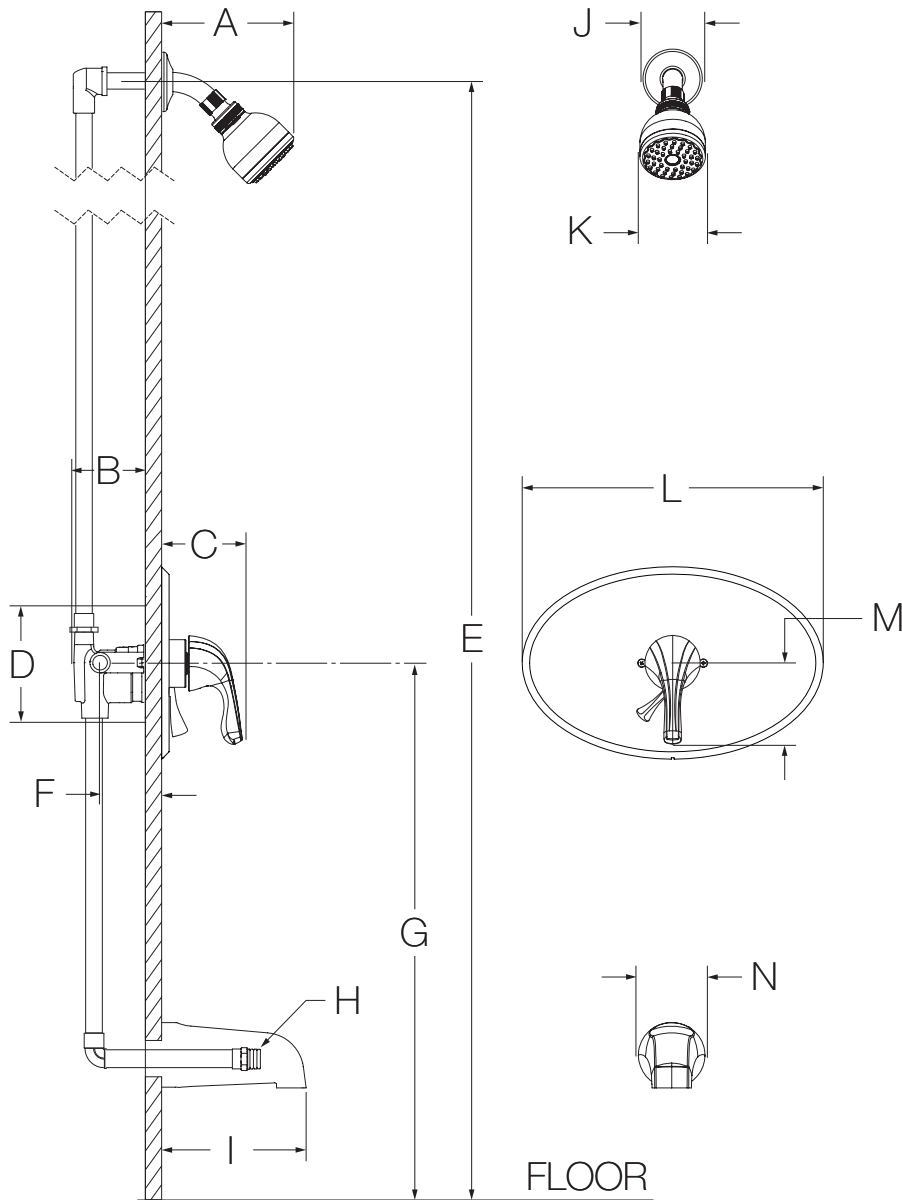




S-9600-PLR-OP, S-9600TS-PLR-OP, S-9601-PLR-OP, S-9602-PLR-OP  
**Operation & Maintenance Manual**

Specification	Modifications
<p><b>S-9600-PLR-OP/S-9601-PLR-OP</b> Shower system powered by the Temptrol® Pressure Balancing valve. Features 13" oval plate, integrated volume control, 1 mode showerhead with easy to clean rubber nozzles and standard 2.5 gpm (9.5 L/min) flow restrictor. Components made from metal and nonmetallic construction, plated in standard polished chrome finish.</p> <p><b>S-9600TS-PLR-OP/S-9602-PLR-OP</b> Tub/shower system powered by the Temptrol® Pressure Balancing valve. Features 13" oval plate, integrated diverter, non-diverter tub spout, 1 mode showerhead with easy to clean rubber nozzles and standard 2.5 gpm (9.5 L/min) flow restrictor. Components made from metal and nonmetallic construction, plated in standard polished chrome finish.</p>  	<ul style="list-style-type: none"> <li><input type="checkbox"/> <b>CG</b> -1.5 1.5 gpm (5.7 L/min) flow restrictor</li> <li><input type="checkbox"/> -2.0 2.0 gpm (7.6 L/min) flow restrictor</li> <li><input type="checkbox"/> -143 3 mode showerhead in place of standard head</li> <li><input type="checkbox"/> -145 5 mode showerhead in place of standard head</li> <li><input type="checkbox"/> -231 Super showerhead in place of standard head</li> <li><input type="checkbox"/> -295 Institutional showerhead (chrome only)</li> <li>-CHKS Integral check stops - for use in installations where a positive shut-off device is used downstream of mixing valve</li> <li><input type="checkbox"/> -D Brass dome cover (chrome only)</li> <li><input type="checkbox"/> -IPS 1/2" female IPS connections</li> <li><input type="checkbox"/> -L/HD Less showerhead</li> <li><input type="checkbox"/> -REV Reverse coring, hot on right, cold on left, for back to back installations</li> <li><input type="checkbox"/> -SS Slip spout on any tub/shower unit</li> <li><input type="checkbox"/> -VP Vandal resistant escutcheon screws in place of standard screws</li> <li><input type="checkbox"/> -X Integral service stops - allows water shutoff at valve for service</li> </ul>
<p><b>Model Numbers</b></p>	<p><b>Note:</b> Append appropriate -suffix to model number.</p>
<ul style="list-style-type: none"> <li><input type="checkbox"/> <b>S-9600-PLR-OP</b> <i>Origins Shower Valve with 13" Oval Plate</i></li> <li><input type="checkbox"/> <b>S-9601-PLR-OP</b> <i>Origins Shower System with 13" Oval Plate</i></li> <li><input type="checkbox"/> <b>S-46-1-BODY</b> <i>Temptrol Pressure Balancing shower valve body with integral volume control</i></li> <li><input type="checkbox"/> <b>S-9600TS-PLR-OP</b> <i>Origins Tub/Shower Valve with 13" Oval Plate</i></li> <li><input type="checkbox"/> <b>S-9602-PLR-OP</b> <i>Origins Tub/Shower System with 13" Oval Plate</i></li> <li><input type="checkbox"/> <b>S-46-2-BODY</b> <i>Temptrol Pressure Balancing tub/shower valve body with integral diverter</i></li> </ul>	<p><b>Compliance</b></p> <ul style="list-style-type: none"> <li>-ASME A112.18.1/CSA B125.1</li> <li>-WaterSense 1.5 gpm (5.7 L/min) 2.0 gpm (7.6 L/min)</li> </ul>  
<p><b>Finish Options</b></p>	<p><b>Warranty</b></p>
<ul style="list-style-type: none"> <li><input type="checkbox"/> <b>-STN</b> <i>Satin Nickel finish</i></li> </ul>	<p><b>Limited Lifetime</b> - to the original end purchaser in consumer/residential installations. <b>5 Years</b> - for industrial/commercial installations. Refer to <a href="http://www.symmons.com/warranty">www.symmons.com/warranty</a> for complete warranty information.</p>

## Dimensions

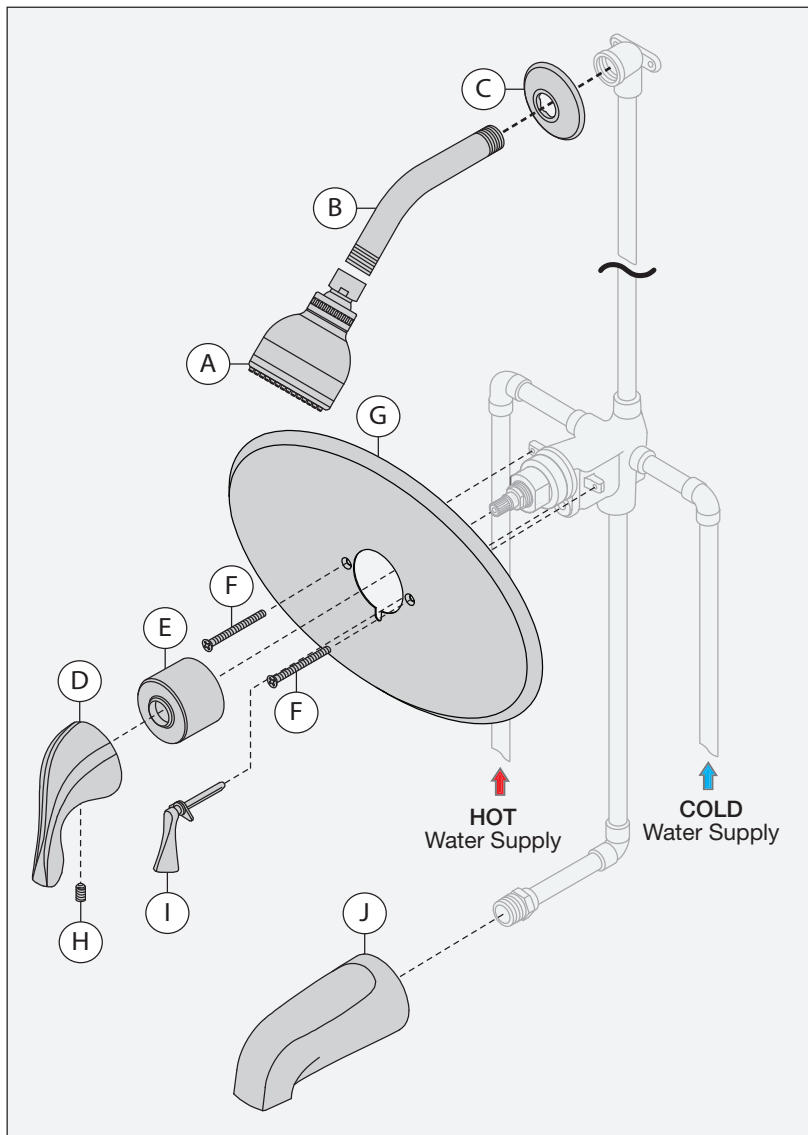


Measurements	
A	6-3/8", 162 mm
B	3-1/2", 89 mm
C	3-5/8", 92 mm
D	Shower Valve Hole Size Min. Ø 3", 76 mm Max. Ø 4", 102 mm
E	Ref. 77", 1956 mm
F	Rough-in 2-3/8" ± 1/2", 60 mm ± 13 mm
G	<b>S-9600-PLR-OP,</b> <b>S-9601-PLR-OP:</b> Ref. 42", 1067 mm <b>S-9600TS-PLR-OP,</b> <b>S-9602-PLR-OP:</b> Ref. 32", 813 mm
H	Male 1/2" NPT fitting must protrude 4" from finished wall
I	5-1/2", 140 mm
J	Ø 2-1/2", 64 mm
K	Ø 2-3/4", 70 mm
L	Ø 13", 330 mm
M	3-3/8", 86 mm
N	Ø 2-1/2", 64 mm

### Notes:


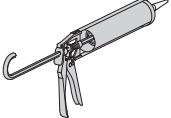
- 1) All dimensions measured from nominal rough-in (see F as reference).
- 2) Dimensions subject to change without notice.

## Parts Breakdown



Replacement Parts		
Item	Description	Part Number
A	Showerhead	4-141*
B	Shower Arm	300S*
C	Flange	300S*
D	Handle	RTS-063*
H	Set Screw	RTS-063*
E	Dome Cover	T-19*
F	Screws	<b>S-9600-PLR-OP,</b> <b>S-9601-PLR-OP:</b> S-9600-OP-ESC*
G	Oval Plate	<b>S-9600TS-PLR-OP,</b> <b>S-9602-PLR-OP:</b> S-9600TS-OP-ESC*
I	Diverter/Volume Control Handle	RTS-062-B (Brass)
J	Tub Spout	060*

**\*Note:** Append -STN to part number for Satin Nickel finish.

Tools Required for Installation	
Adjustable Wrench	
Allen Wrench: Handle (1/8" mm)	
Plumber Tape	
Silicone	

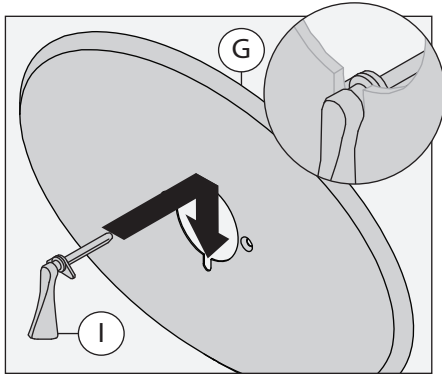
### Notes:

- 1) Apply a bead of silicone around the perimeter of all shower trim installed flush to the finished wall (less mounting plates and brackets). Leave opening on bottom of escutcheon for weep hole.
- 2) Apply plumber tape to all threaded connections.
- 3) Escutcheon artwork is dependent on handle style.
- 4) Oval plate available for lever style handles only.

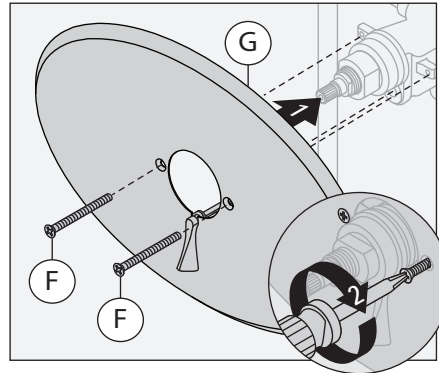
## Installation

- Note:** 1) For valve body installation, please see valve body manual.  
2) Use the provided oval plate template for Temptrol valve body conversion applications.

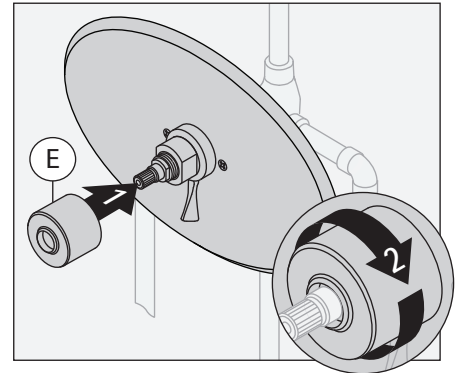
1) Install diverter handle or volume control handle (I) into shower escutcheon (G).



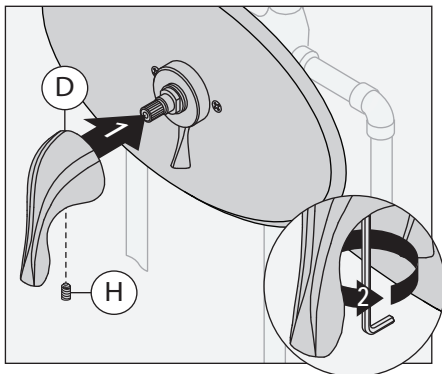
2) Install shower escutcheon (G) to shower valve. Secure with two screws (F).



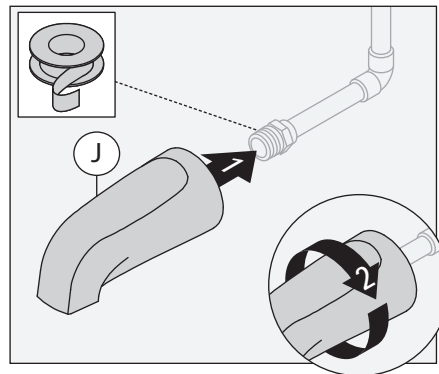
3) Install dome cover (E) to valve by turning clockwise.



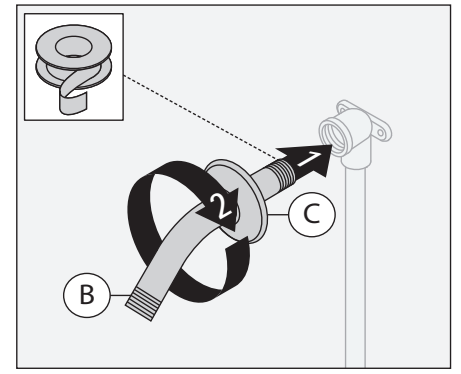
4) Install handle (D) to valve and secure with set screw (H).



5) Install tub spout (J) to pipe fitting. Turn clockwise to secure.

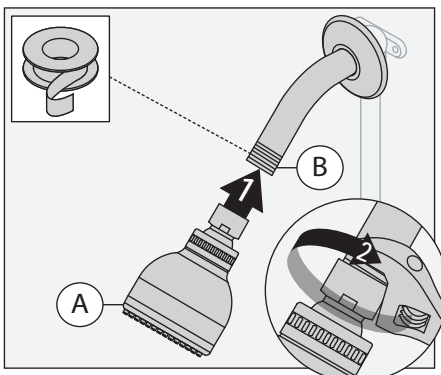


6) Attach shower arm (B) and flange (C) to vertical shower pipe. Turn clockwise to tighten.



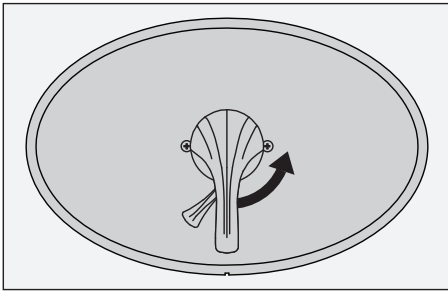
**Note:** Handle should be facing the 6 o'clock position.

7) Install showerhead (A) to shower arm (B). Turn clockwise to tighten.

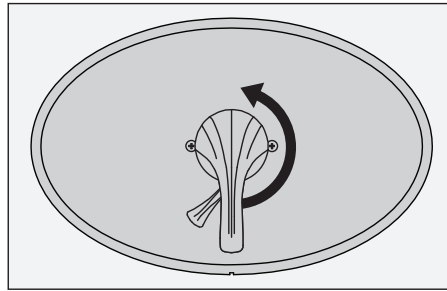


## Operation (Temperature Control)

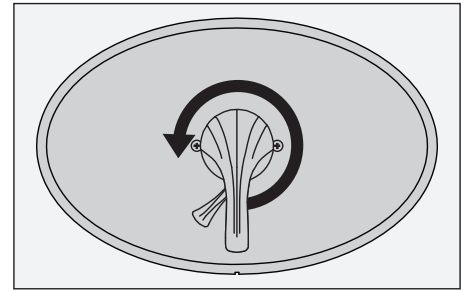
1) Turn shower handle counter-clockwise approximately 1/4 turn to put valve in cold position.



2) Turn shower handle counter-clockwise approximately 1/2 turn to put valve in warm position.

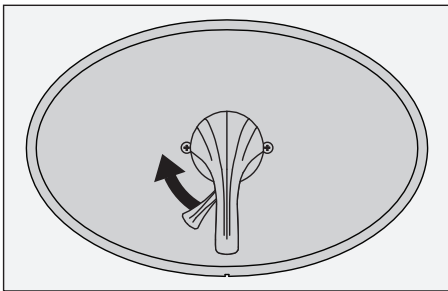


3) Turn shower handle counter-clockwise approximately 3/4 turn to put valve in hot position.

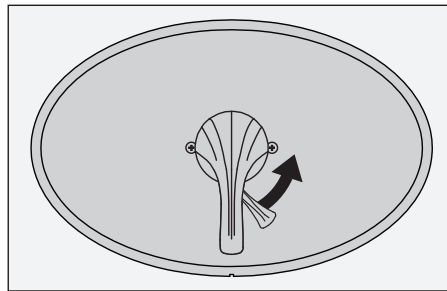


## Operation (Volume Control for S-9600-PLR-OP & S-9601-PLR-OP)

1) Turn volume control handle left for high flow.

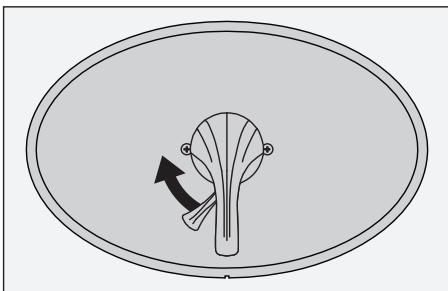


2) Turn volume control handle right for low flow.

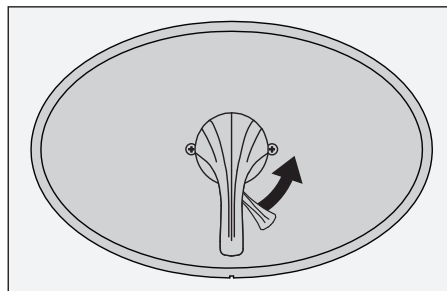


## Operation (Diverter Control for S-9600TS-PLR-OP & S-9602-PLR-OP)

1) Turn diverter handle left for tub spout operation.



2) Turn diverter handle right for showerhead operation.



## Troubleshooting Chart

Problem	Cause	Solution
Finish is spotting.	Elements in water supply may cause water staining on finish.	Clean finished trim area with a soft cloth using mild soap and water or a non-abrasive cleaner and then quickly rinse with water.