







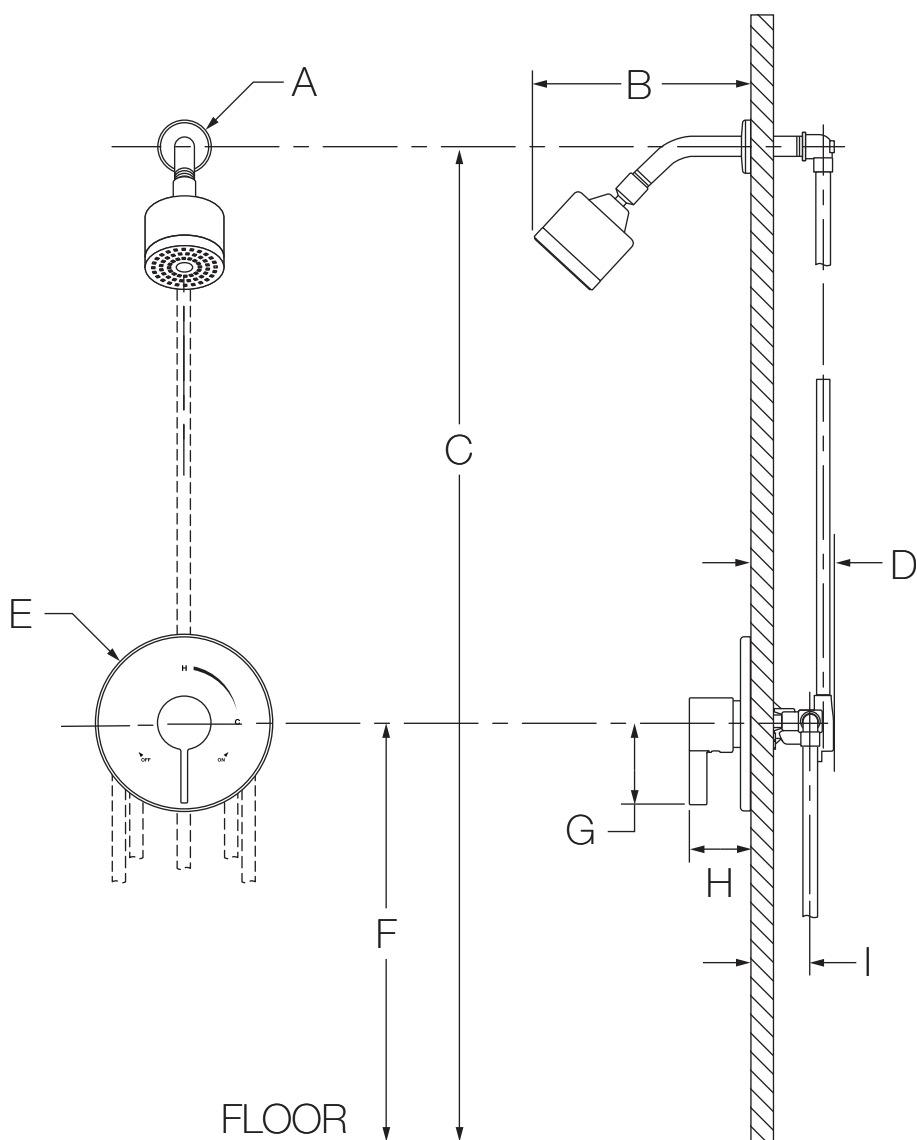
Location:



3521-B
Shower System
Specification Submittal

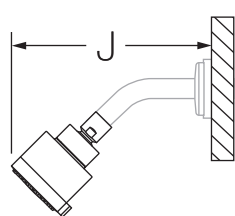
Model Numbers	Specification
<input type="checkbox"/> 3521-B <i>Dia Shower System</i>	<p>Shower system powered by the Temptrol® pressure-balancing valve. Features adjustable stop screw to limit handle turn, 1 mode showerhead with easy to clean rubber nozzles and standard 2.5 gpm (9.5 L/min) flow restrictor. Components made from metal and nonmetallic materials, plated in standard polished chrome finish.</p> <div style="text-align: right;">   </div>
<p>Modifications</p> <ul style="list-style-type: none"> <input type="checkbox"/> -1.5  <i>1.5 gpm (5.7 L/min) flow restrictor</i> <input type="checkbox"/> -Delete Suffix B <i>Nonmetallic chrome plated escutcheon in place of standard brass escutcheon</i> <input type="checkbox"/> -SH2 <i>Round, 3 mode showerhead</i> <input type="checkbox"/> -SH3 <i>Round, 1 mode showerhead</i> <input type="checkbox"/> -SH4 <i>Square, 1 mode showerhead</i> <input type="checkbox"/> -TRM <i>Trim only, valve not included</i> 	<p>Compliance</p> <p>-ASME A112.18.1/CSA B125.1</p> <div style="text-align: right;">  </div>
<p>Note: Append appropriate -suffix to model number.</p>	<p>Warranty</p> <p>Limited Lifetime - to the original end purchaser in consumer/residential installations. 5 Years - for industrial/commercial installations. Refer to www.symmons.com/warranty for complete warranty information.</p>

Dimensions

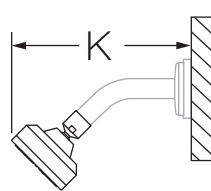


Measurements	
A	Ø 2-1/2", 64 mm
B	6-3/4", 171 mm
C	77", 1956 mm
D	3-1/2", 89 mm
E	Ø 7-1/2", 191 mm
F	42", 1067 mm
G	3", 76 mm
H	2-7/8", 73 mm
I	Rough-in 2-3/8" ± 1/2", 60 mm ± 13 mm
J	6-3/4", 171 mm
K	6", 152 mm
L	5-5/8", 143 mm

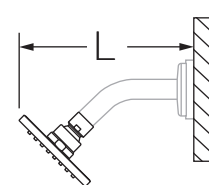
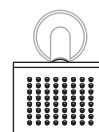
-SH2



-SH3



-SH4



Notes:

- 1) All dimensions measured from nominal rough-in (see I as reference).
- 2) Dimensions are subject to change without notice.