

SYMMONS® Oxford™

Roman Tub Faucet SRT-4270

Installation and Service Instructions



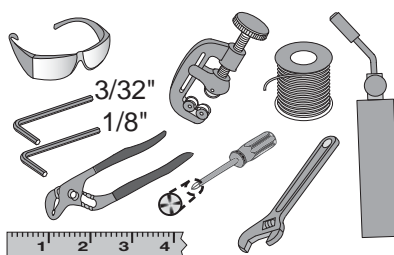
Model Numbers

SRT-4270 Roman Tub Faucet

Finish Options

- STN Satin Nickel
- ORB Oil Rubbed Bronze
- Chrome (standard finish)

Tools & Materials



Need Help?

Contact Symmons customer service at (800) 796-6667, (781) 848-2250

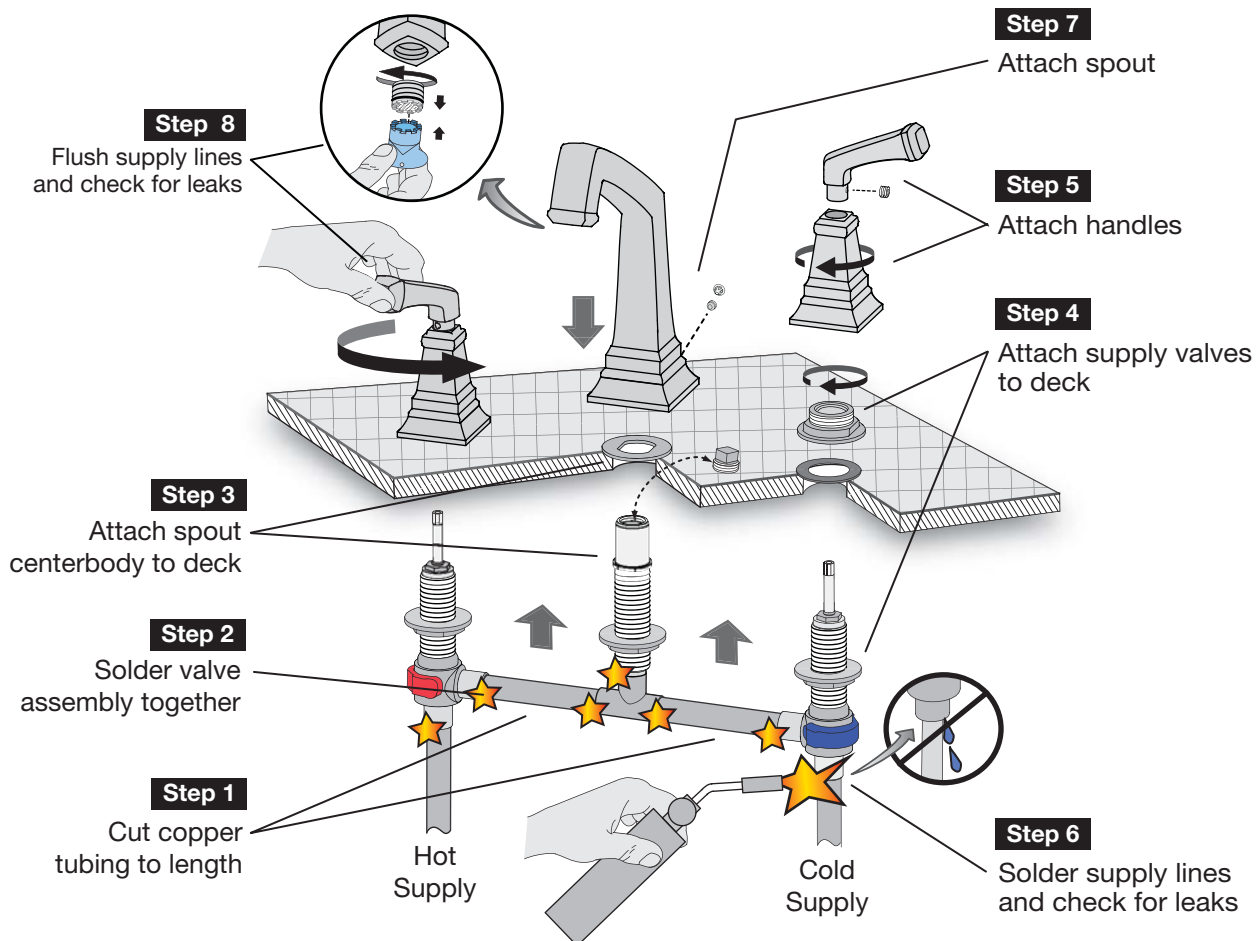
Email: customerservice@symmons.com

Monday - Friday 8:00 am - 7:30 pm EST

Please check Symmons website for technical help, the latest product information and warranty policy.

www.symmons.com/service

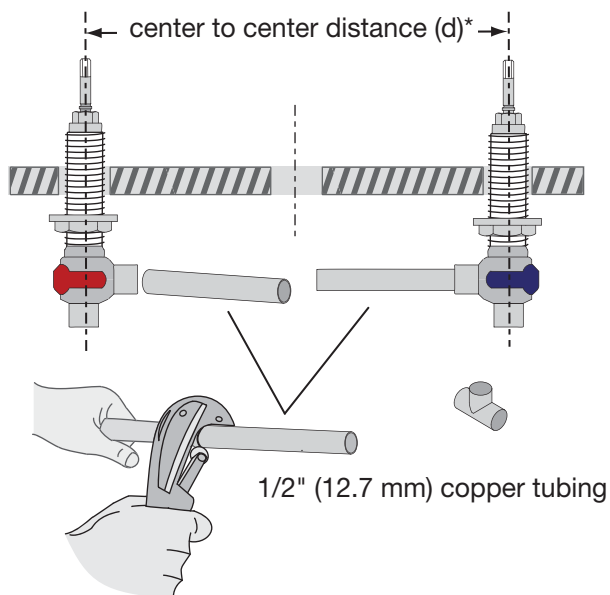
Quick Install Guide Oxford Roman Tub Faucet, SRT-4270



Installation Instructions

Step 1 Cut copper tubing to length

Length = (d) minus 2-1/4 inches (57 mm) divided by 2.

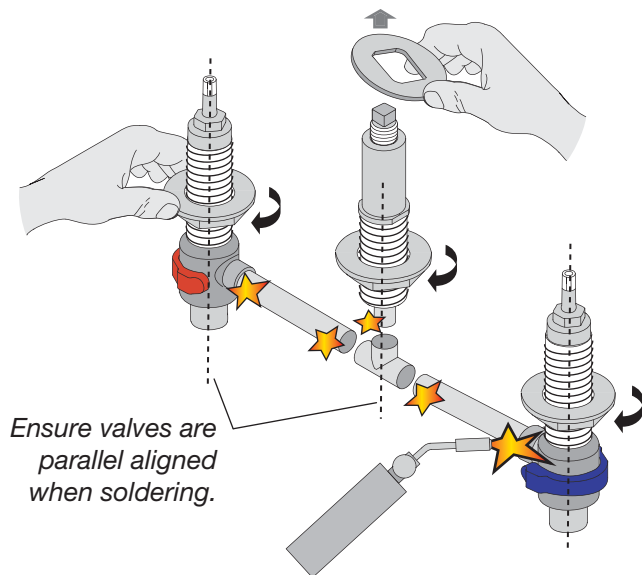


Example:

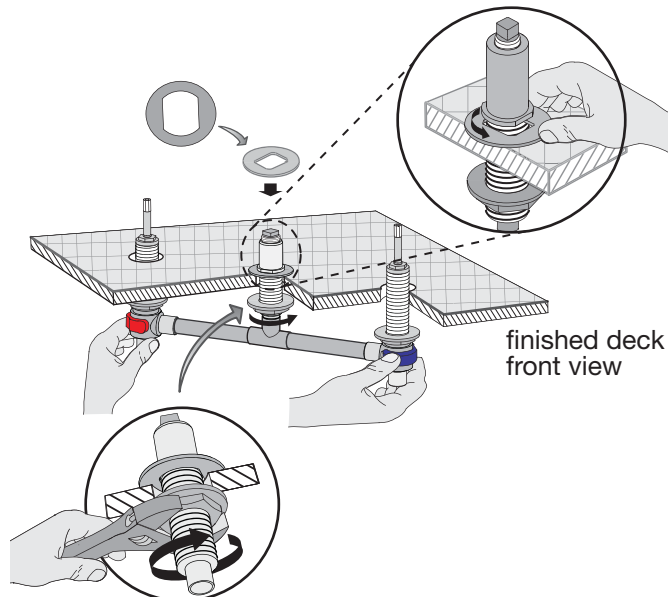
- If center to center distance (d) is 14 inches.
- 14 inches minus 2-1/4 inches = 11-3/4 inches.
- 11-3/4 inches divided by 2 = 5-7/8 inches.
- Cut 2 copper tubes into 5-7/8 inch lengths.

* Maximum distance (d) with supplied copper tubing is 18-1/4 inches (463 mm)

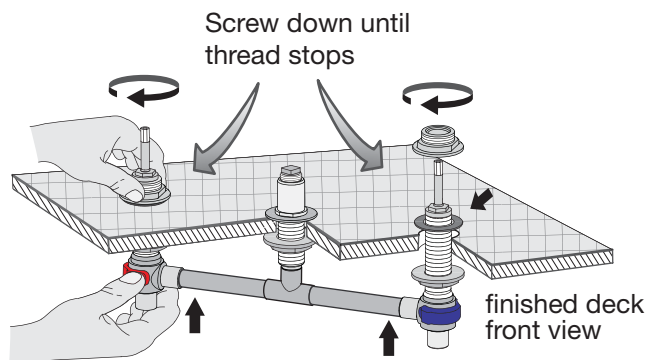
Step 2 Solder valve assembly together



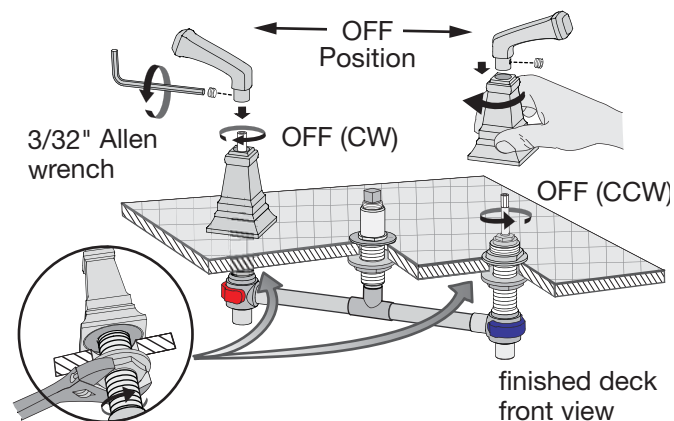
Step 3 Attach spout centerbody to deck



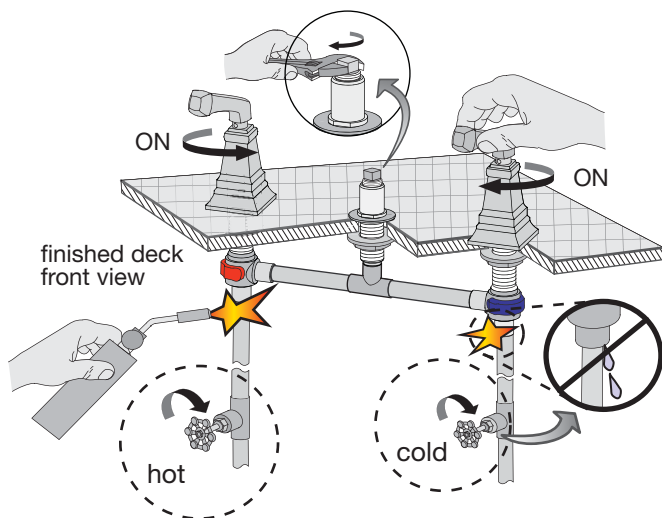
Step 4 Attach supply valves to deck



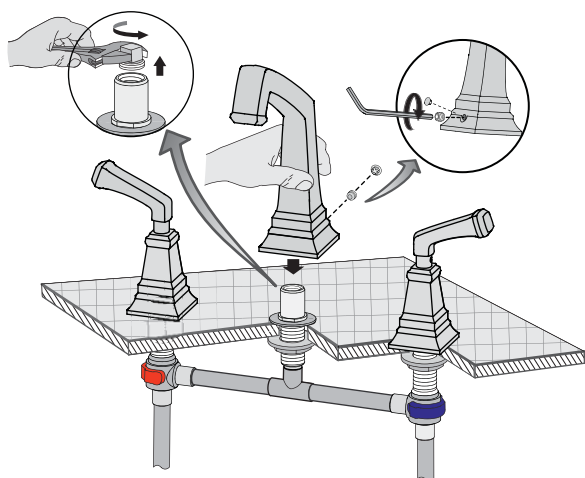
Step 5 Attach handles



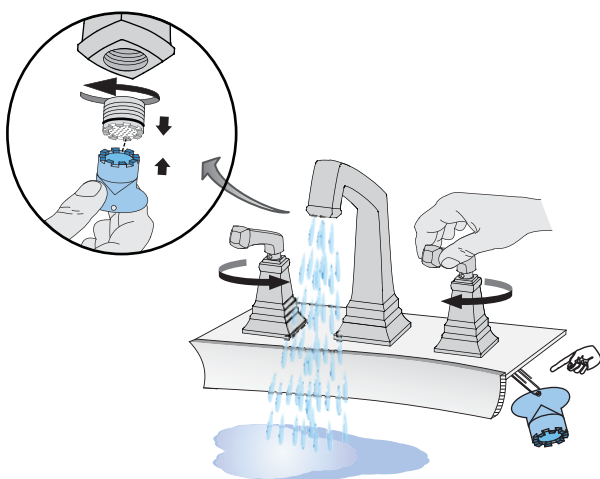
Step 6 Solder supply lines to valve inlets and check for any leaks



Step 7 Attach spout



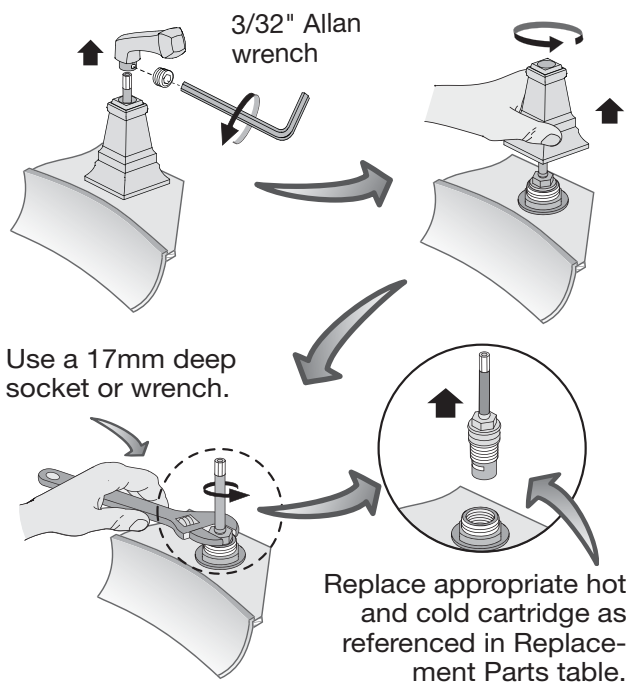
Step 8 Flush supply lines; check for leaks



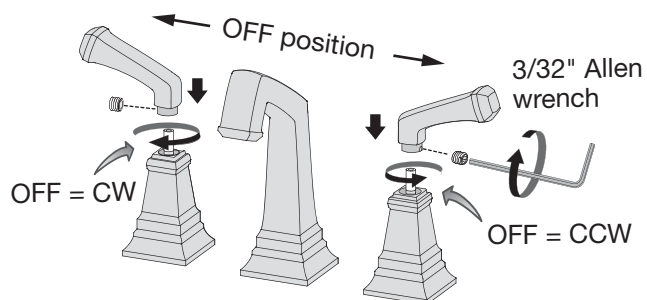
Care of faucet finish

Clean finish area by using mild soap and water or non-abrasive cleaner and then rinse immediately. A non-abrasive wax may be used to preserve finish area.

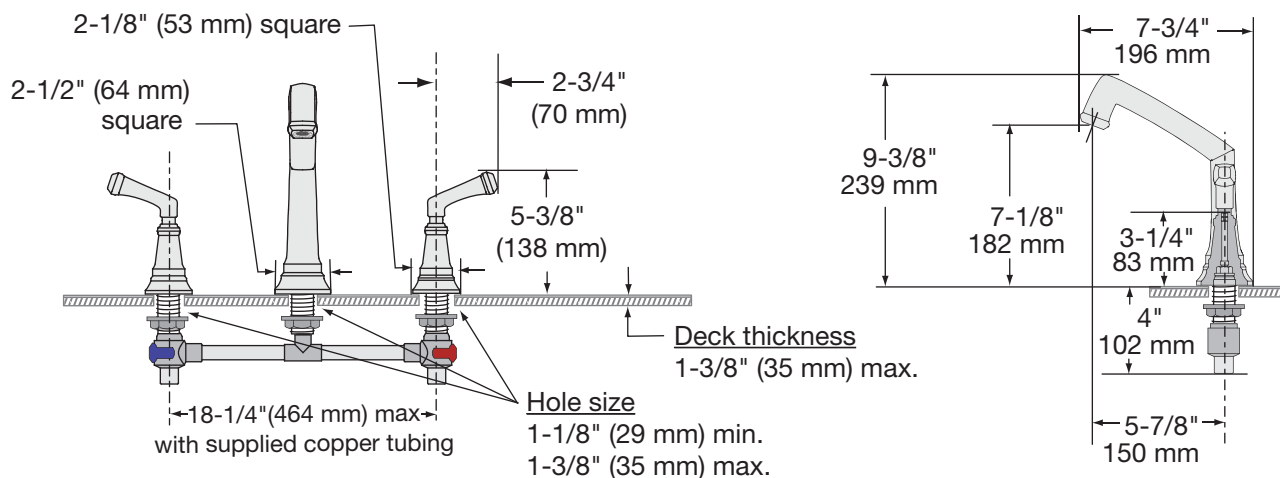
Valve cartridge replacement



Attaching handles

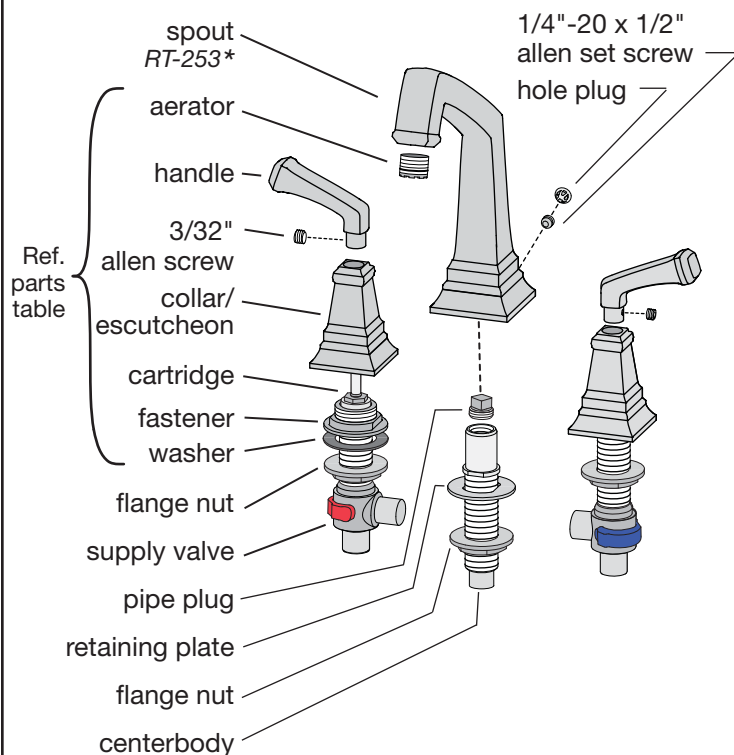


Dimensions Oxford Roman Tub Faucet, SRT-4270



Note: Dimensions subject to change without notice.

Parts Assembly Oxford Roman Tub Faucet, SRT-4270



Replacement Parts	
Part Number	Item
RT-422-KIT * includes two handle assemblies	handle kit handle screw collar fastener gasket
KN-114E (hot) OFF = CW KN-113E (cold) OFF = CCW	KN-113E identified by groove valve cartridge
LN-333-KIT	aerator (2.2 gpm) removal key

* Note: For faucets with an optional decorative finish, add appropriate suffix code letters to part numbers marked with an asterisk (*) when ordering.

Ordering replacement parts:

Call Symmons customer service at (800) 796-6667, (781) 848-2250 M-F 8:00 am - 7:30 pm EST or check our website at www.symmons.com for a list of Symmons distributors.