






# SLW-6710-1.5, SLW-6712-1.5

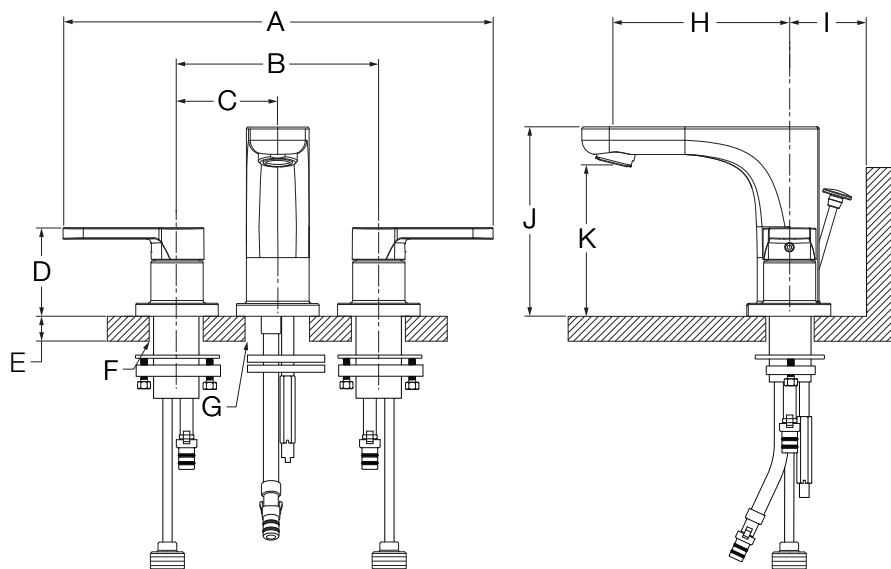
## Two Handle Widespread Lavatory Faucet

### Specification Submittal



| Model Numbers  | Specification   |
|--|---|
| <input type="checkbox"/> <b>SLW-6710-1.5</b><br><i>Two Handle Widespread Lavatory Faucet</i><br><input type="checkbox"/> <b>SLW-6712-1.5</b><br><i>Two Handle Widespread Lavatory Faucet with lift rod and 50/50 pop-up drain assembly</i>   | Two handle widespread lavatory faucet features 8"-16" mount, ceramic cartridges, 1/2" IPS inlet connections, 50/50 pop-up drain assembly and standard 1.5 gpm (5.7 L/min) aerator. Faucet constructed from brass, plated in standard polished chrome finish.  |
| <b>Compliance</b><br>-ASME A112.18.1/CSA B125.1<br>-NSF/ANSI 61.9, NSF/ANSI 376<br>-WaterSense 1.5 gpm (5.7 L/min)   |    |
| <b>Warranty</b><br><b>Limited Lifetime</b> - to the original end purchaser in consumer/residential installations.<br><b>5 Years</b> - for industrial/commercial installations.<br>Refer to <a href="http://www.symmons.com/warranty">www.symmons.com/warranty</a> for complete warranty information. | <b>Modifications</b><br><input type="checkbox"/> <b>-0.5</b>  0.5 gpm (1.9 L/min) aerator<br><input type="checkbox"/> <b>-1.0</b>  1.0 gpm (3.8 L/min) aerator<br><input type="checkbox"/> <b>-Delete Suffix 1.5</b> 2.2 gpm (8.3 L/min) aerator<br><input type="checkbox"/> <b>-MP</b> Metal pop-up drain in place of standard<br><input type="checkbox"/> <b>-STN</b> Satin Nickel finish<br><input type="checkbox"/> <b>-VP</b> Vandal resistant aerator (2.2 gpm - 8.3 L/min)<br><b>Note:</b> Append appropriate -suffix to model number. |

### Dimensions



| Measurements |  |
|--------------|--|
| A            | 13-1/2", 343 mm  |
| B            | 8", 203 mm   |
| C            | 4", 102 mm   |
| D            | (2x) 2-1/8", 54 mm   |
| E            | Deck Thickness Ref.<br>Min. 5/8", 16 mm<br>Max. 1-3/8", 35 mm  |
| F            | (2x) Hole Size<br>Min. Ø 1-1/4", 32 mm<br>Max. Ø 1-1/2", 38 mm |
| G            | Hole Size<br>Min. Ø 1-3/8", 35 mm<br>Max. Ø 1-5/8", 41 mm      |
| H            | 4-5/16", 110 mm  |
| I            | 2", 51 mm  |
| J            | 4-5/8", 117 mm   |
| K            | 3-5/8", 92 mm  |

**Note:** Dimensions subject to change without notice.