



Location:

Identity™



673TR  
Towel Ring

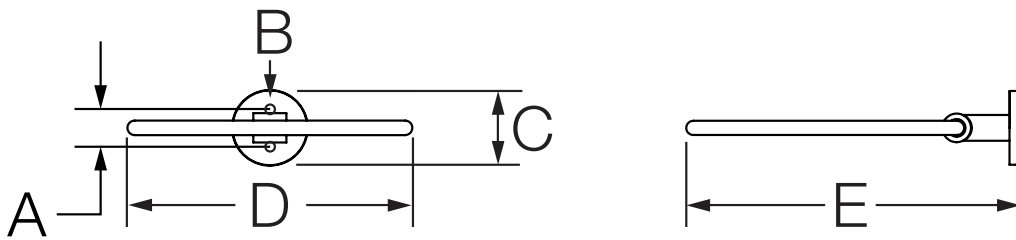
**Specification Submittal**

Model Numbers	Specification
<input type="checkbox"/> <b>673TR</b> <i>Identity Towel Ring</i>	Towel ring made from metal construction, plated in standard polished chrome finish. Includes durable anchors for 1/2" drywall or tile applications and features a universal mounting kit. When installed properly, the anchors hold a maximum weight of 50 lbs.
Modifications	Warranty
<input type="checkbox"/> <b>-STN</b> <i>Satin Nickel finish</i>	<b>Limited Lifetime</b> - to the original end purchaser in consumer/residential installations. <b>5 Years</b> - for industrial/commercial installations. Refer to <a href="http://www.symmons.com/warranty">www.symmons.com/warranty</a> for complete warranty information.

**Note:** Append appropriate -suffix to model number.

**Dimensions**

Measurements	
A	3/4", 19 mm
B	(2x) Hole Size Ø 5/16", 8 mm
C	1-13/16", 46 mm
D	6-13/16", 173 mm
E	8-1/4", 210 mm



**Note:** Dimensions subject to change without notice.