

Location:






# SYMMONS<sup>®</sup> Duro<sup>®</sup>

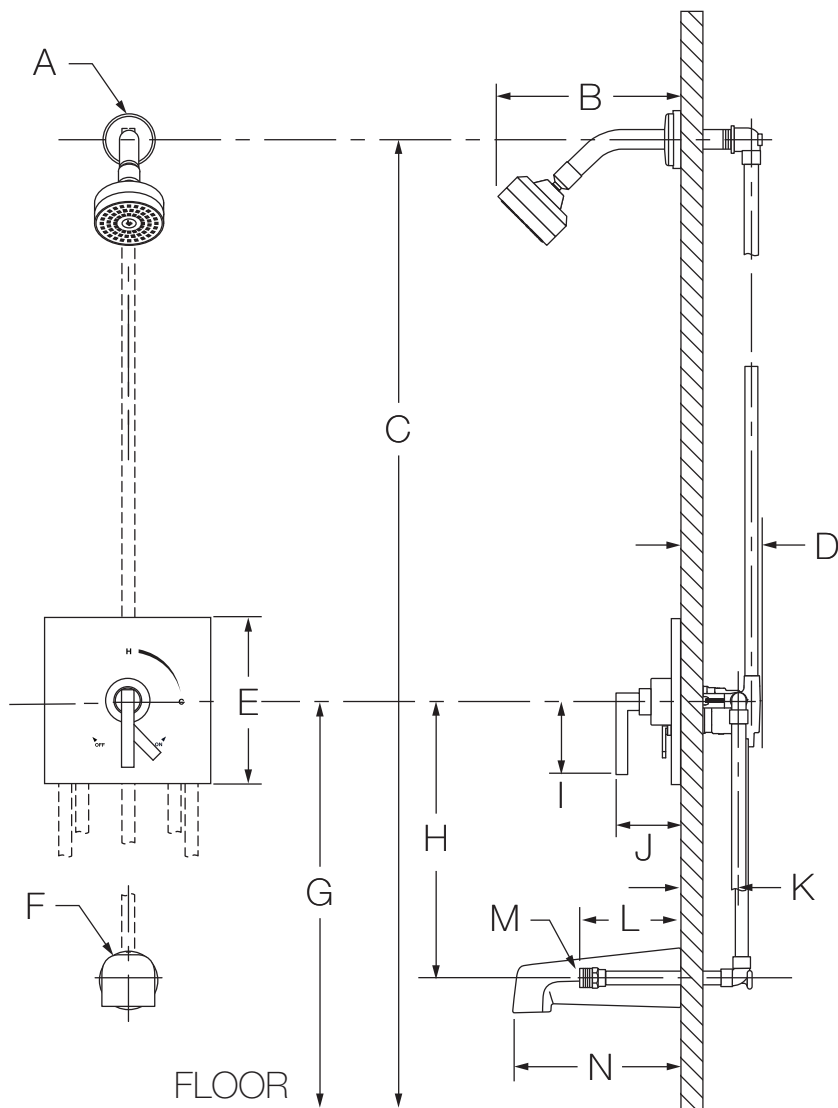
the smart choice<sup>™</sup>

S-3602  
Tub/Shower System  
**Specification Submittal**



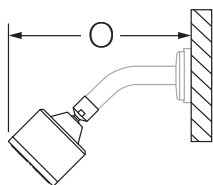
Model Numbers	Specification
<input type="checkbox"/> <b>S-3602</b> <i>Tub/Shower System</i>	<p>Tub/Shower system powered by the Temptrol<sup>®</sup> pressure balancing valve. Features adjustable stop screw to limit handle turn, integrated diverter control, 1 mode showerhead with easy to clean rubber nozzles, non-diverter tub spout and standard 2.5 gpm (9.5 L/min) flow restrictor. Components made from metal and nonmetallic materials, plated in standard polished chrome finish.</p> <div style="text-align: right;"></div>
Modifications	Compliance
<input type="checkbox"/> <b>-1.5</b>  <i>1.5 gpm (5.7 L/min) flow restrictor</i> <input type="checkbox"/> <b>-SH1</b> <i>Round, 1 mode showerhead</i> <input type="checkbox"/> <b>-SH2</b> <i>Round, 3 mode showerhead</i> <input type="checkbox"/> <b>-SH4</b> <i>Square, 1 mode showerhead</i> <input type="checkbox"/> <b>-T4</b> <i>Square, non-diverter tub spout</i> <input type="checkbox"/> <b>-TRM</b> <i>Trim only, valve not included</i>	<p>-ASME A112.18.1/CSA B125.1</p> <div style="text-align: right;"></div>
	Warranty
	<p><b>Limited Lifetime</b> - to the original end purchaser in consumer/residential installations.  <b>5 Years</b> - for industrial/commercial installations.  Refer to <a href="http://www.symmons.com/warranty">www.symmons.com/warranty</a> for complete warranty information.</p>
<p><b>Note:</b> Dimensions subject to change without notice.</p>	

## Dimensions

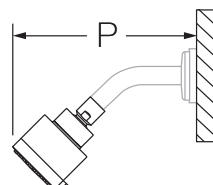


Measurements	
A	Ø 2-1/2", 64 mm
B	6", 152 mm
C	Ref. 77", 1956 mm
D	3-1/2", 89 mm
E	7-1/2", 191 mm
F	Ø 2-1/2", 64 mm
G	Ref. 32", 813 mm
H	Ref. 12", 305 mm
I	3-1/8", 79 mm
J	3-1/2", 89 mm
K	Rough-in 2-3/8" ± 1/2", 60 mm ± 13 mm
L	5-1/4", 133 mm
M	Male 1/2-14 NPT fitting must protrude 5-1/4" (133 mm) from finished wall
N	7", 178 mm
O	6-3/4", 171 mm
P	6-3/4", 171 mm
Q	5-5/8", 143 mm
R	2-1/4", 57 mm
S	2-3/4", 70 mm
T	6", 152 mm
U	Female 1/2-14 NPT fitting must be recessed 3/8" from finished wall

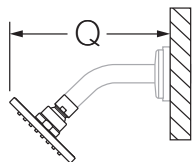
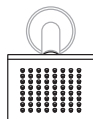
**-SH1**



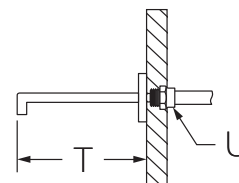
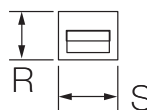
**-SH2**



**-SH4**



**-T4**



### Notes:

- 1) All dimensions measured from nominal rough-in (see K as reference).
- 2) Dimensions subject to change without notice.