



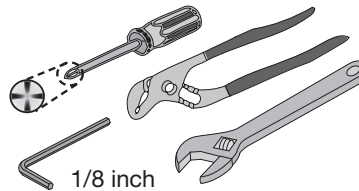
Kitchen Faucet S-2620-L

Installation and Service Instructions

Model Numbers


- S-2620-LChrome finish
- S-2620-STN-LSatin Nickel finish
- S-2620-STS-LStainless Steel finish

Tools & Materials



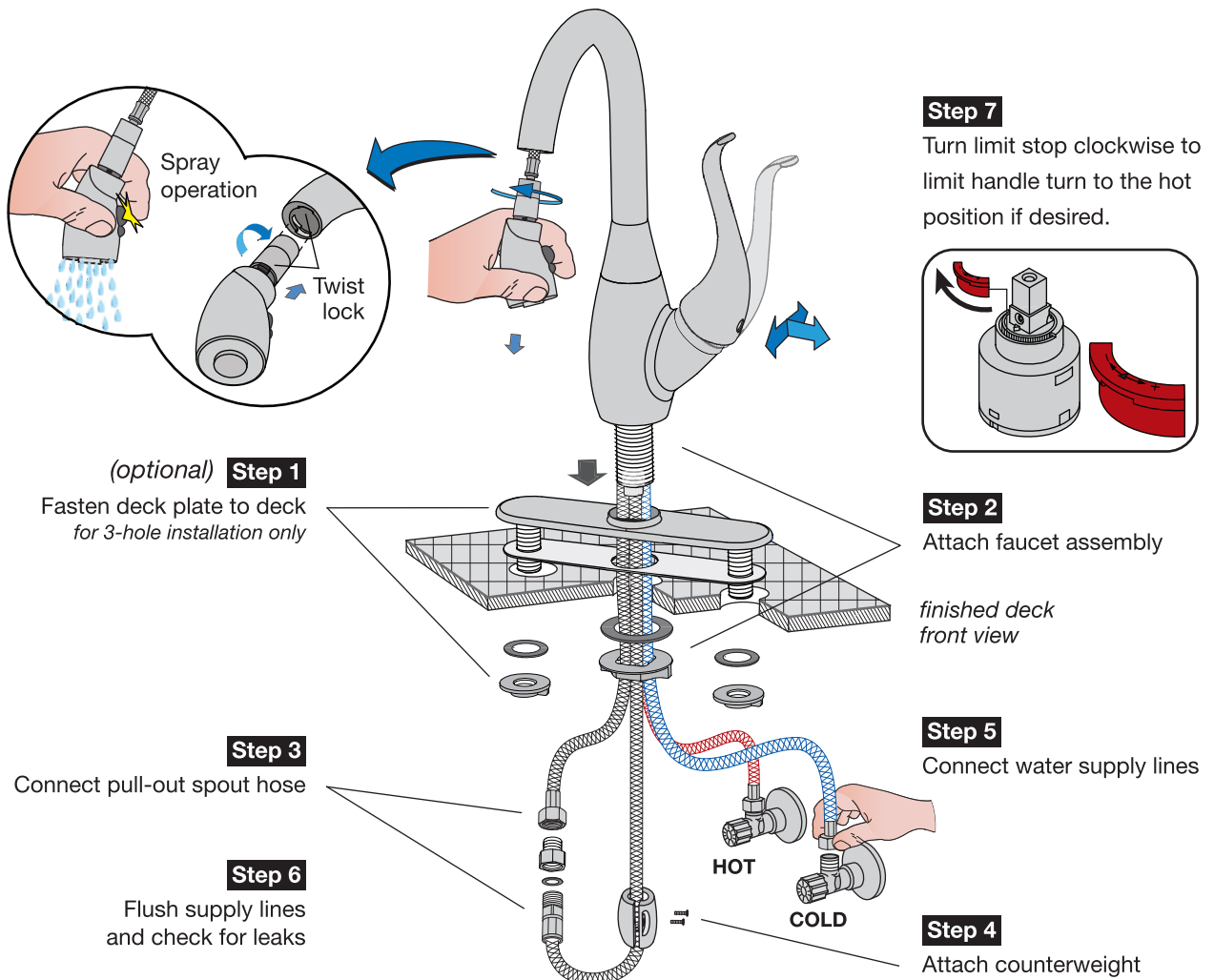
Need Help?

Symmons customer service:
(800) 796-6667, (781) 848-2250
Email: customerservice@symmons.com
Monday - Friday 7:30 am - 7:00 pm EST

 www.symmons.com/service

- Technical help
- Product information
- Warranty policy.

Quick Install Guide Moscato Kitchen Faucet, S-2620-L

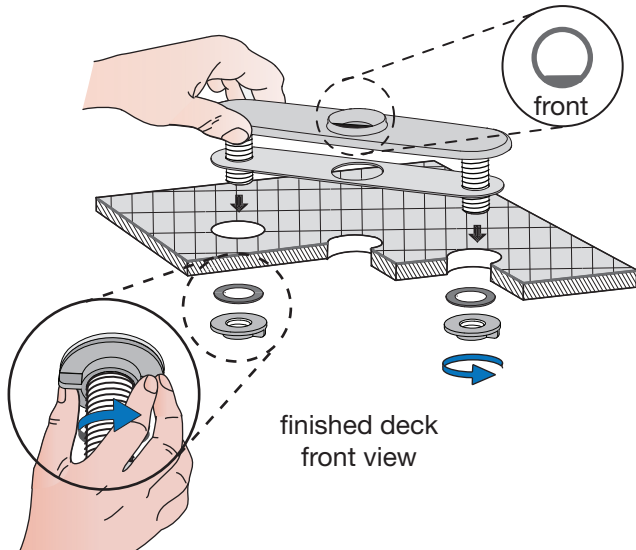


Installation Instructions

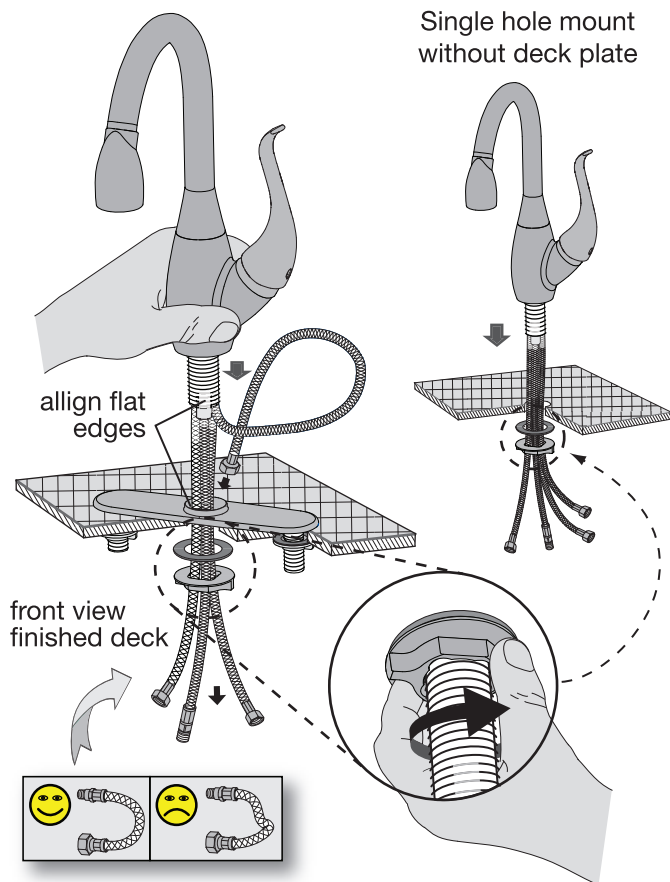
Caution: If replacing an older faucet ensure water supply is turned OFF before removing and then turn faucet ON to relieve water pressure.

Step 1 Attach deck plate to deck (optional)

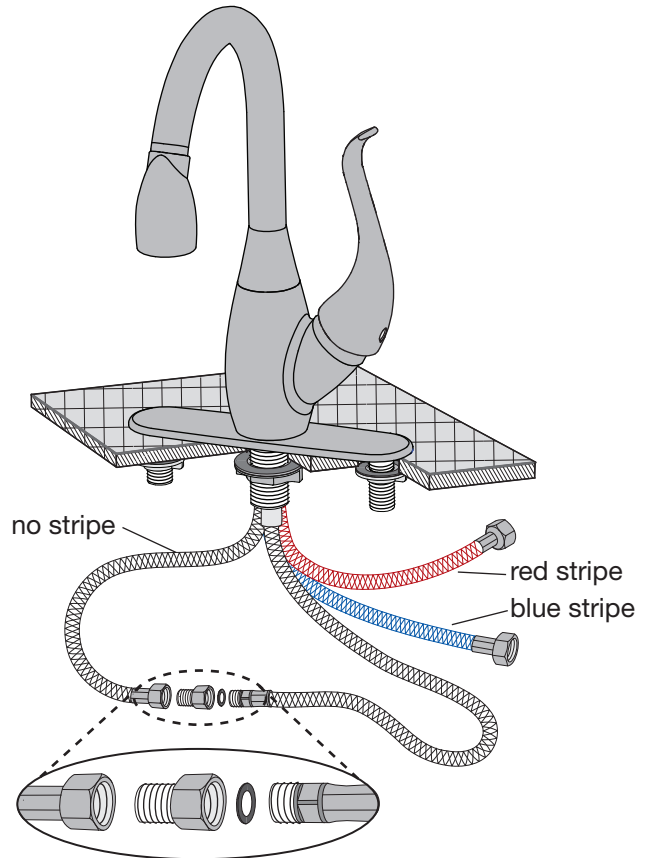
Deck plate is typically used for covering existing holes when faucet is being replaced. Install as required.



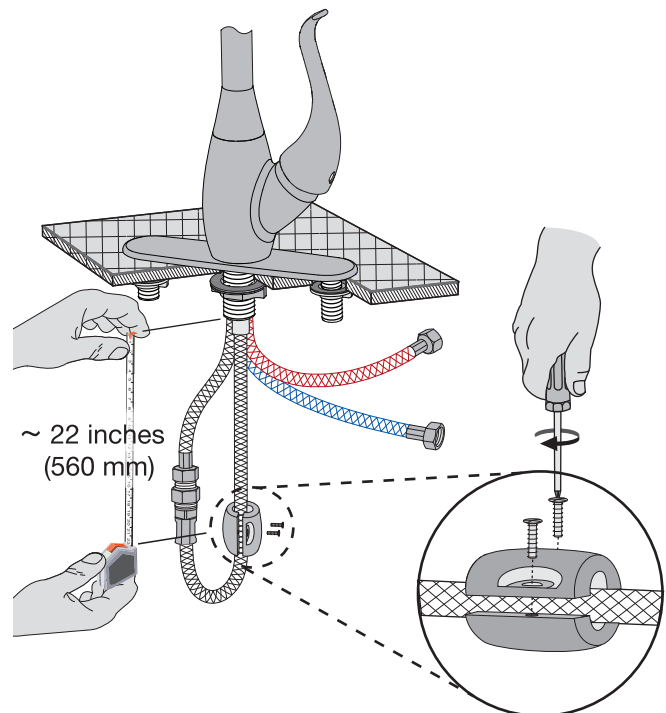
Step 2 Attach faucet assembly to deck



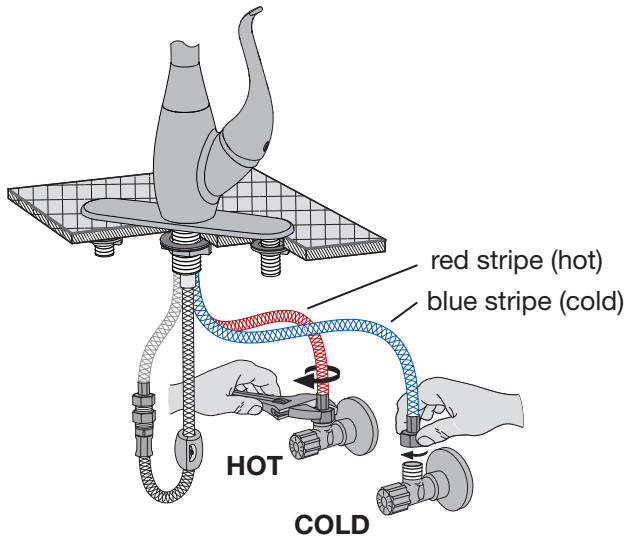
Step 3 Connect pull-out spout hose



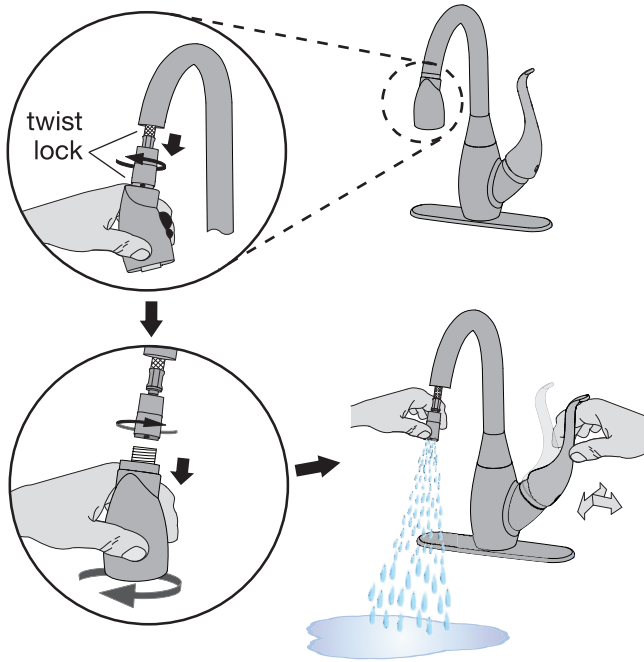
Step 4 Attach counterweight to hose



Step 5 Connect water supply lines



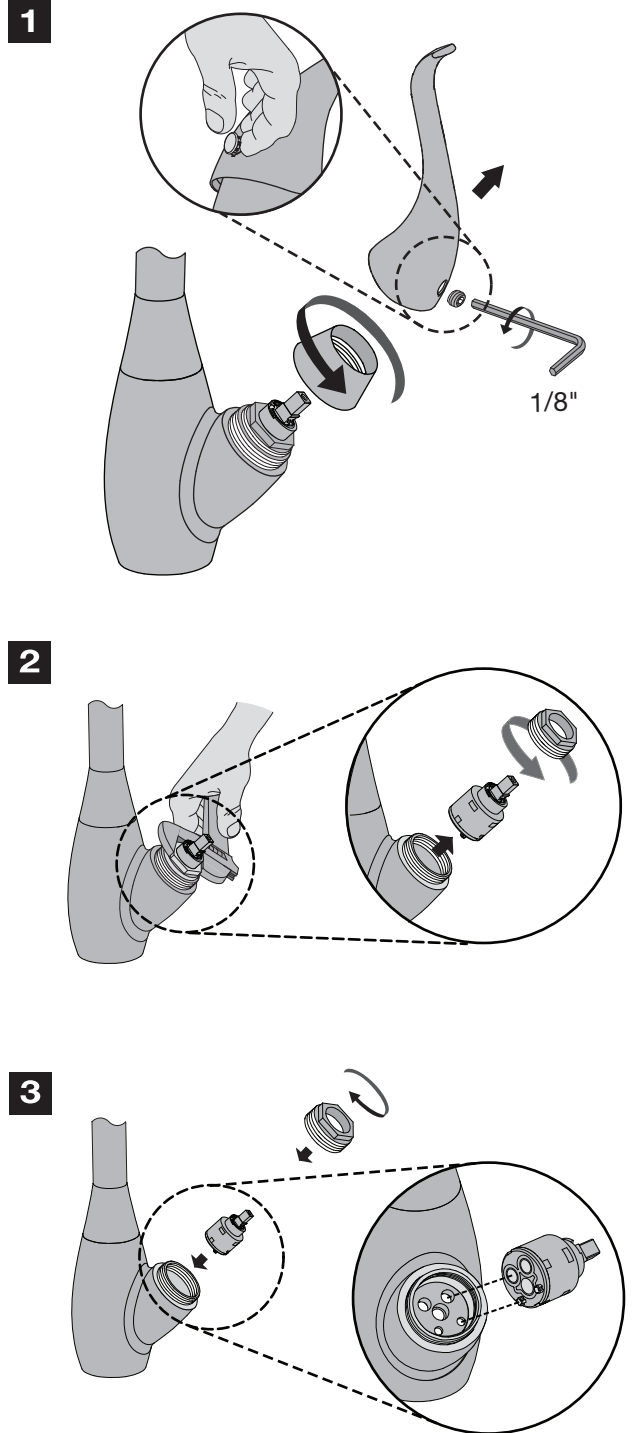
Step 6 Flush supply lines and check for leaks



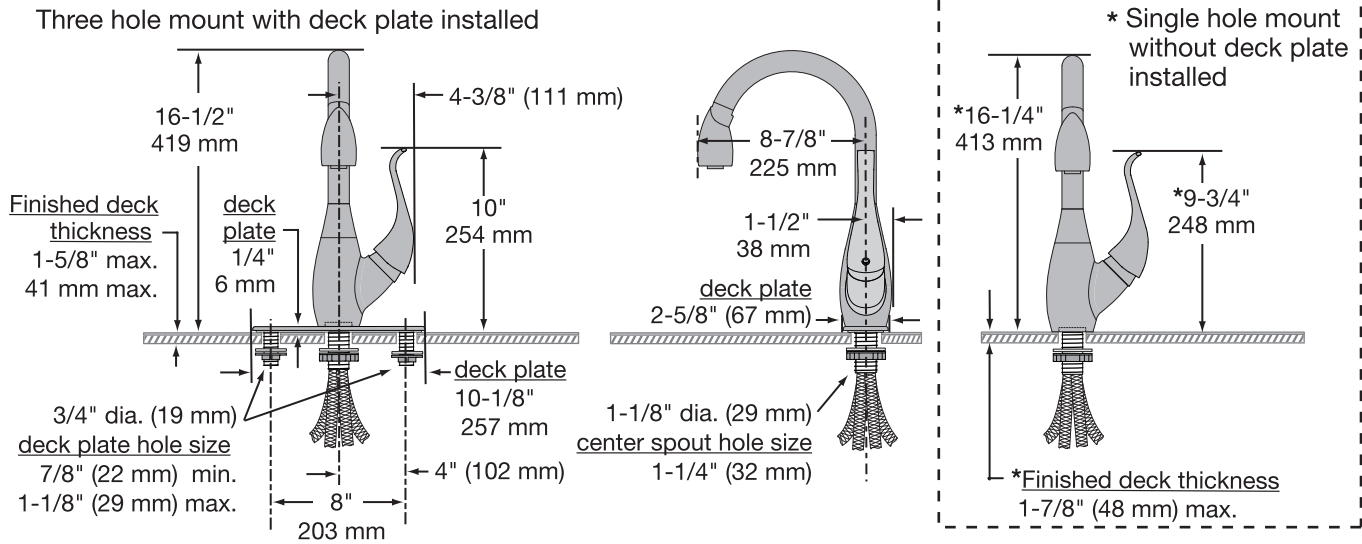
Care of faucet finish

Clean finish area by using mild soap and water or non-abrasive cleaner and then rinse immediately. A non-abrasive wax may be used to preserve finish area.

Valve cartridge replacement

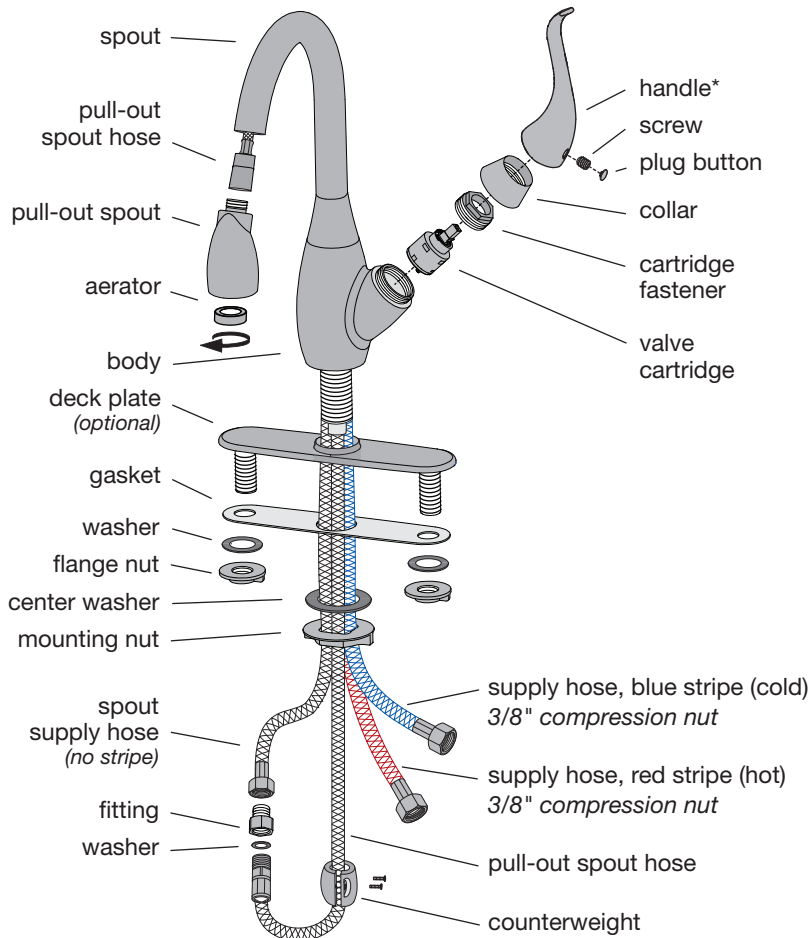


Dimensions *Moscato Kitchen Faucet, S-2620-L*





Note: Dimensions subject to change without notice.

Parts Assembly *Moscato Kitchen Faucet, S-2620-L*



Replacement Parts

Part Number	Item
KN-4	valve cartridge 
KN-281*	handle screw plug button 

Ordering replacement parts:

Symmons customer service: (800) 796-6667, (781) 848-2250 M-F 8:00 am - 7:30 pm EST
Symmons distributors: www.symmons.com

Note: For decorative finish faucets add appropriate suffix code letters to part numbers marked with an asterisk ()

For California Residents

WARNING: This product contains chemicals known to the State of California to cause cancer, birth defects, or other reproductive harm.

Symmons Industries, Inc. ■ 31 Brooks Drive ■ Braintree, MA 02184 ■ Phone: (800) 796-6667 ■ Fax: (800) 961-9621
Copyright © 2017 Symmons Industries, Inc. ■ symmons.com ■ gethelp@symmons.com ■ ZV-548 REV A ■ 101617