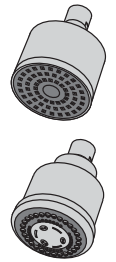






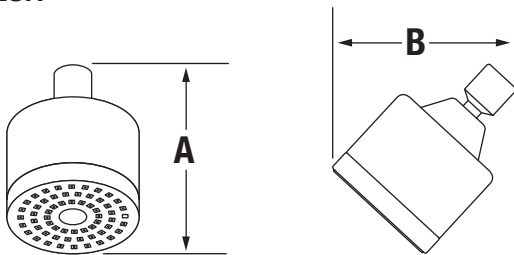
352SH, 352SH-3
Dia™ Showerhead Series
Operation & Maintenance Manual



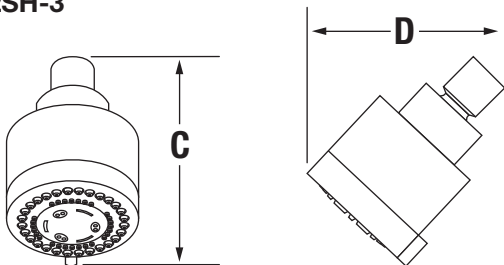
Model Numbers	Specifications
<input type="checkbox"/> 352SH <i>Dia 3" 1 Mode Showerhead</i> <input type="checkbox"/> 352SH-3 <i>Dia 3" 3 Mode Showerhead</i>	3" 1 mode showerhead (352SH) and 3" 3 mode showerhead (352SH-3) include standard 2.5 gpm (9.5 L/min) flow restrictor. Components made from metal and plastic materials plated in standard polished chrome finish.
Modifications	Compliance
<input type="checkbox"/> -1.5  <i>1.5 gpm (5.7 L/min) flow restrictor</i> <input type="checkbox"/> -2.0  <i>2.0 gpm (7.6 L/min) flow restrictor</i> <input type="checkbox"/> -STN <i>Satin nickel finish</i>	-ASME A112.18.1/CSA B125.1 -WaterSense (1.5 & 2.0 gpm) <div style="float: right; text-align: right;">   </div>
<p>Note: Append appropriate -suffix to model number.</p>	Warranty
	<p>Limited Lifetime - to the original end purchaser in consumer installations. 5 Years - for commercial installations.</p> <p>Refer to www.symmons.com/warranty for complete warranty information.</p>

Dimensions

352SH



352SH-3



Measurements	
A	4 1/4", 108 mm
B	4 1/8", 105 mm
C	4 3/4", 121 mm
D	4 1/2", 114 mm

Required for Installation	
Teflon Tape	

Note: Dimensions are subject to change without notice.

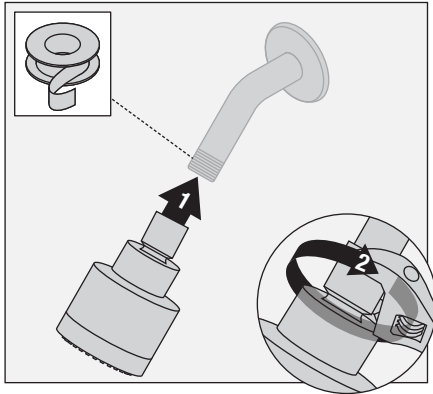
352SH, 352SH-3

Dia™ Showerhead Series

Operation & Maintenance Manual

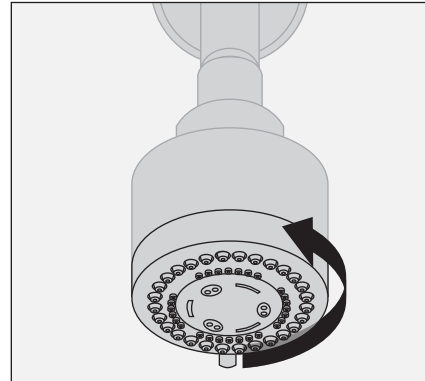
Installation

1) Install showerhead to shower arm (not included) turning clockwise to tighten.



Operation

1) Turn showerhead to desired mode of operation.



Care and Cleaning

1) Clean finished trim area with a soft cloth using mild soap and water or a non-abrasive cleaner and then quickly rinse with water.

Troubleshooting Chart

Problem	Cause	Solution
Finish is spotting.	Elements in water supply may cause water staining on finish.	Clean finished trim area with a soft cloth using mild soap and water or a non-abrasive cleaner and then quickly rinse with water.
Showerhead is leaking from shower arm when valve is in "on" position.	Coupling connecting showerhead to shower arm is cracked or washer inside coupling is worn.	Inspect coupling and washer and replace showerhead if necessary.