

Contractor Series LED RT4 and RT5/6 Recessed Downlight Kit

11,000 Hour Life



The Contractor Series RT4 and RT5/6 is a 4", 5" and 6" compatible LED recessed downlight kit creating high performing white light and is optimized for new construction and retrofit applications. Installation is done quickly and easily in most standard 4", 5" or 6" Insulated Ceiling (IC) housings, Airtight (AT) housings and non-IC housings.

Dimming

The Contractor Series LED RT4 and RT5/6 recessed downlight kits are dimmable down to 25% of full light output with compatible dimmers. The minimum dimming value is based on light output using compatible dimmers, and may not be an indication of the kit's full rated capability.

Application Information

Applications

- Healthcare
- Hospitality
- Office
- Property Management
- Residential
- Retail

Key Features & Benefits

- Lumen package:
 - RT4 - 550 lumens
 - RT5/6 - 625 lumens
- Replacement for 50W and 65W incandescent lamps
- RT4 fits into most 4" recessed downlight fixtures
- RT5/6 fits into most 5" and 6" recessed downlight fixtures
- CCT: 2700K/3000K/4000K/5000K
- CRI: 80
- Beam angle: 80°
- 120V input voltage
- Dimmable down to 25%
- 11,000 hour life (L₇₀)
- Suitable for dry, damp and wet locations
- Lasts up to 5.5 times longer than incandescent lamps
- No warm-up time, instant-on with full light output and stable lamp to lamp color
- Reduces energy consumption up to 86%

Quality of Light

The Contractor Series LED RT provides good color rendering (80), and a selection of color temperatures (2700K, 3000K, 4000K and 5000K). LEDs have virtually no UV or infrared radiation to damage or fade furnishings, art or other objects.

Optical Design

Optical design efficiently directs light output in an 80° beam angle with low glare.

Accessories

Assorted color retrofit trims, retrofit band.

Product Offering

Product Description	Lumen Output	Wattage	Color Temperature	CRI
RT4	550	8	2700K, 3000K, 4000K, 5000K	80
RT5/6	625	9	2700K, 3000K, 4000K, 5000K	80

Specifications and Certifications



Specification Data

Catalog #	Type
Project	
Comments	
Prepared by	

Specifications

Energy Data

Minimum Starting Temp: -40°F (-40°C)
EMI/RFI: FCC Title 47 CFR, Part 15, Class B
Sound Rating: <24dBA
Input Voltage: 120V
Power Factor: >0.90
Input Frequency: 60Hz

THD: <20%

Input Current: 0.08A & 0.1A
Maximum Ambient Operating Temperature (Insulated Ceiling or Non-Insulated Ceiling): 104°F (40°C)

Color

Correlated Color Temperature (CCT): 2700K, 3000K, 4000K, 5000K
Color Rendering Index (CRI): 80

Ordering Information

Item Number	Ordering Abbreviation	Recessed Housing	Replaced Incandescent Wattage	Nominal Wattage (W)	Delivered Light Output (lm)	Color Temperature	CRI	Avg. Rated Life (hrs)*
70520	LED/RT4/550/827	4 in.	50W	8	550	2700K	80	11,000
70521	LED/RT4/550/830	4 in.	50W	8	550	3000K	80	11,000
74181	LED/RT4/550/840	4 in.	50W	8	550	4000K	80	11,000
74182	LED/RT4/550/850	4 in.	50W	8	550	5000K	80	11,000
74404	LED/RT5/6/625/827	5 in and 6 in	65W	9	625	2700K	80	11,000
74405	LED/RT5/6/625/830	5 in and 6 in	65W	9	625	3000K	80	11,000
74406	LED/RT5/6/625/840	5 in and 6 in	65W	9	625	4000K	80	11,000
74407	LED/RT5/6/625/850	5 in and 6 in	65W	9	625	5000K	80	11,000

* LED lamp life is defined as the number of hours when 50% of an average group of identical lamps reached 70% of its initial lumens.

Ordering Guide

LED	/	RT5/6	/	625	/	8	/	30
LED		Product Name: 5/6=fits 5" and 6" housing		Light Output 625 lm		CRI=80		Color Temperature 3000K

Energy Savings

Basic Product Description	LED Lumens	LED Life	Traditional Lamp Types	Lumens	Life	Watts Saved	Energy Savings*	Life Benefit
RT4 8W	550	11,000	Incandescent 50WR20	410	2000	42	\$50	5.5X
RT5/6 9W	625	11,000	Incandescent 65WBR30	640	2000	56	\$67	5.5X

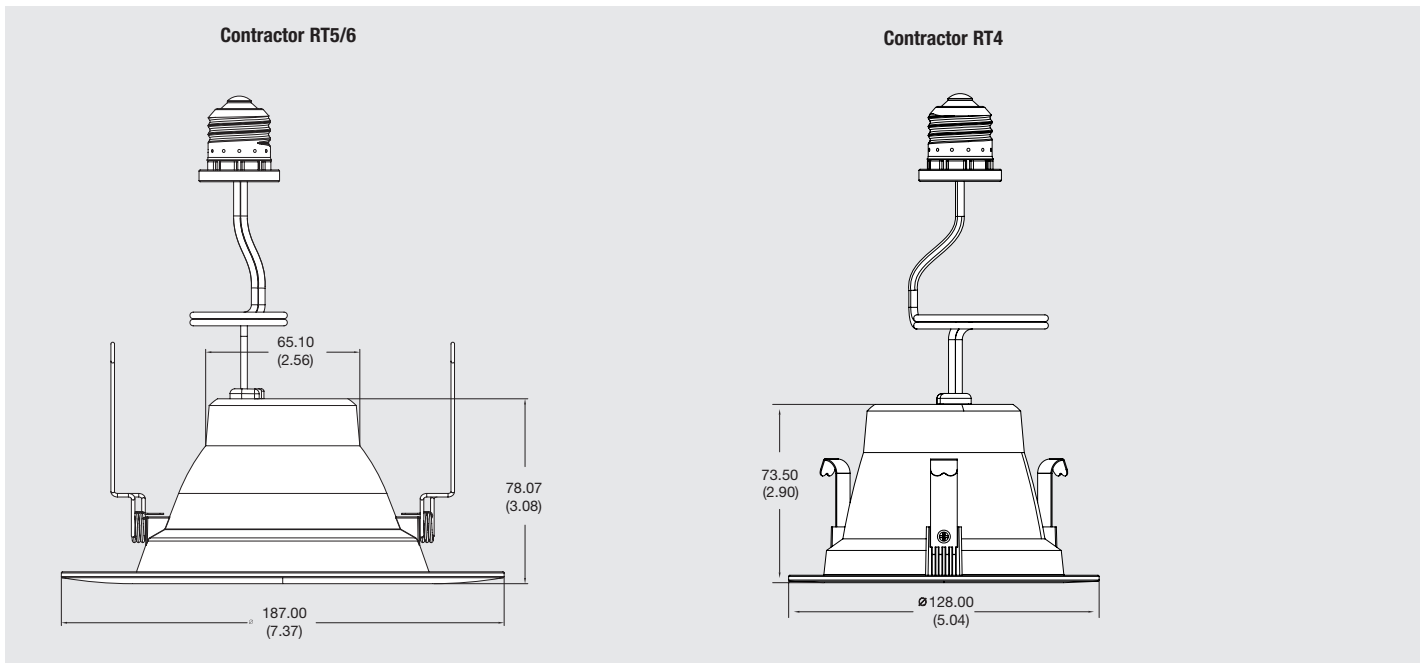
* Based on \$0.11/kWh over 11,000 hours life.

Application Information

Application Notes

- Operating temperature range between -40°F and 104°F (-40°C and 40°C).
- Suitable for indoor and outdoor dry, damp and wet locations.
- Suitable for dimmers or in housings controlled by a dimmer. For a list of compatible dimmers, please refer to www.sylvania.com.
- Not intended for use with emergency light fixtures or exit lights.
- For use in housings that can structurally support a lamp weighing one pound.
- RT5/6 designed to install in standard 5" and 6" insulated and non-insulated housings. For a list of compatible housings, please refer to www.sylvania.com.
- For detailed warranty information, please refer to www.sylvania.com.

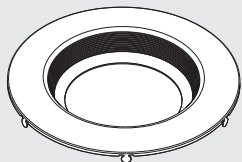
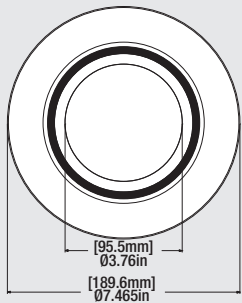
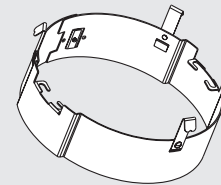
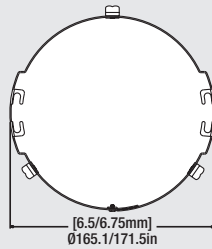
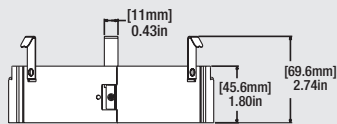
Assembly Diagram



Accessories

Retrofit Band (For 6" housing models Progress Lighting P87-AT and Lightolier 1104IC)

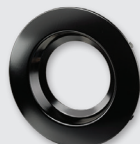
70663 RT6/RETROFITBAND (sold separately)



Retrofit Trim (For non-Gimbal only, can be used with RT5/6 and RT6)

70696	RT4/TRIM/BLK One Tone: Black Trim & Black Reflector
70697	RT4/TRIM/ORBZ One Tone: Bronze Trim & Bronze Reflector
70698	RT4/TRIM/SN One Tone: Satin Nickel Trim & Satin Nickel Reflector
70713	RT4/TRIM/BLKBaffle Two Tone: White Trim & Black Baffle Reflector
70714	RT4/TRIM/WHTBaffle Two Tone: White Trim & White Baffle Reflector
70716	RT4/TRIM/ALZAK Two Tone: White Trim & Alzak Reflector
75095	RT/5/6/TRIM/DKBZ
75097	RT/5/6/TRIM/BLK
75098	RT/5/6/TRIM/ORBZ
75099	RT/5/6/TRIM/SN

Contractor RT5/6



75097



75098



75099

Contractor RT4



70713



70714



70716



70696



70697

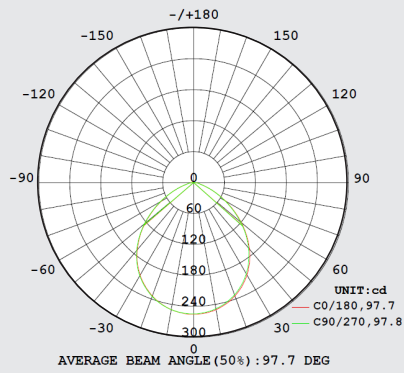


70698

Photometric Information

Contractor RT4

Polar Chart

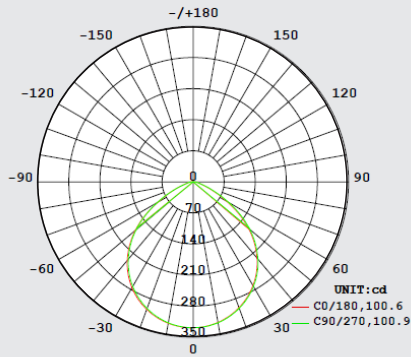


Illuminance at Distance

	Edge	Center	Beam Diameter
2 ft	8.9 fc	67.0 fc	4.8 ft
4 ft	2.2 fc	16.8 fc	9.5 ft
6 ft	1.0 fc	7.4 fc	14.3 ft
8 ft	0.6 fc	4.2 fc	19.1 ft
10 ft	0.4 fc	2.7 fc	23.8 ft
12 ft	0.2 fc	1.9 fc	28.6 ft

Contractor RT5/6

Polar Chart



Illuminance at Distance

	Edge	Center	Beam Diameter
2 ft	16.6 fc	74.0 fc	3.4 ft
4 ft	4.2 fc	18.5 fc	6.7 ft
6 ft	1.8 fc	8.2 fc	10.1 ft
8 ft	1.0 fc	4.6 fc	13.4 ft
10 ft	0.7 fc	3.0 fc	16.8 ft
12 ft	0.5 fc	2.1 fc	20.1 ft

LEDVANCE LLC
 200 Ballardvale Street
 Wilmington, MA 01887 USA
 Phone 1-800-LIGHTBULB (1-800-544-4828)
www.sylvania.com

SYLVANIA and LEDVANCE are registered trademarks.
 All other trademarks are those of their respective owners.
 Product Licensee of Trademark SYLVANIA in General Lighting.
 Specifications subject to change without notice.

[/sylvania](https://twitter.com/sylvania) [/sylvania](https://facebook.com/sylvania)

