

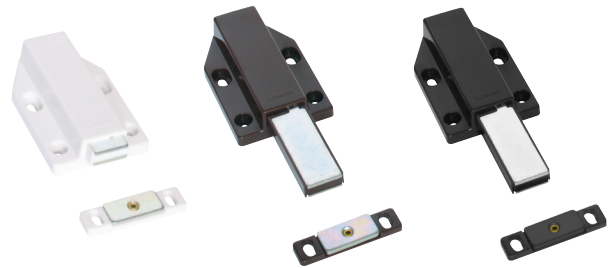
Touch Latches

With dozens of models and finishes and styles in our **Magnetic** and **Non-Magnetic Touch Latches** selection, we are sure to have the solution you want to create a clean and minimalistic space that eliminates the need for handles and use the power of TOUCH!

Magnetic Touch Latch (Long Stroke)

ML-120

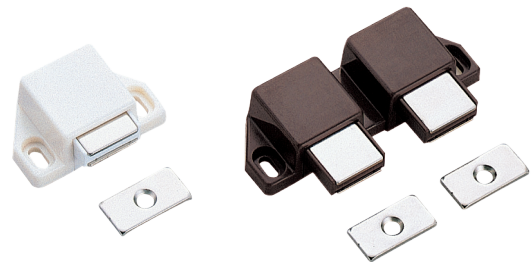
- 5.5 Lbs Push-Out Force
- 5.3 Lbs Magnetic Force
- Available in black, white and brown



Magnetic Touch Latch (Single and Double)

ML-30 Series

- 2.6 Lbs Magnetic Force
- Available in brown and white



Non-Magnetic Touch Latch (Auto Adjusting)

MLC-100

- 3.1 Lbs Push-Out Force
- 20.2 Lbs Retaining Force
- Available in black and white



sugatsune.com

1.888.557.5267

The Magnetic Touch

The mighty **ML-ZN80 Push-To-Open Door Latch** featuring a strong 11 lbs push force, ideal for large doors, and it features a magnet that allows tolerance with 1.5° swivel. The hidden mounting screw design offers a clean appearance and easy installation, available in two finishes.



Scan to see it
in action

The only Push-To-Open Door Latch of this category, available in the market.

Item No.	Mag. Force	Push Force	Materials	Finish/Color
ML-ZN80	6.6 lbs	11 lbs	Zinc, Plastic, Stainless Steel	White/Black



America Headquarters
18101 Savarona Way
Carson, CA 90746
www.sugatsune.com

