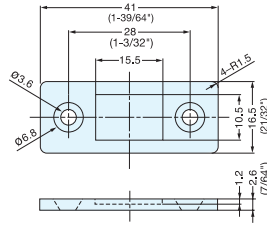


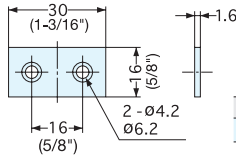
ULTRA THIN & STRONG MAGNETIC CATCH



MC-159



Counterplate-Optional



| Item No. | Material | Finish |
|--------------|----------|--------|
| MC-159-Plate | Steel | Nickel |

- Unique ultra thin magnetic catch design with extra strong magnetic force.
Note: 1) Max. temperature: 80°C (176°F)
2) To avoid breakage, counterplate should not hit magnet.
3) Screw heads should not protrude above the base plate.
- Fasteners not included, use M3 Flat head or equivalent.
- Counterplate not included, MC-159-Plate sold separately.

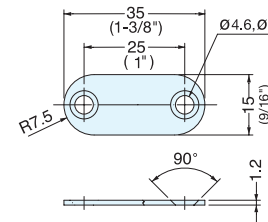
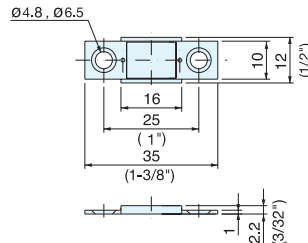
| Item No. | Magnetic Force (kg) | Weight (g) | Box (pcs) | Carton (pcs) |
|----------|---------------------|------------|-----------|--------------|
| MC-159 | 4 (8.8 lbs) | 12 | 200 | 1000 |

| Part Name | Material | Finish |
|-----------|-----------|--------|
| Magnet | Neodymium | Nickel |
| Base/Yoke | Steel | Nickel |

ULTRA THIN MAGNETIC CATCH



MC-YN001P



- Unique ultra thin magnetic catch design ideal for tight spaces.
- Counterplate included.
- Strong magnetic force.
Note: 1) Max. temperature: 80°C (176°F)
2) To avoid breakage, counterplate should not hit magnet.
3) Screw heads should not protrude above the base plate.

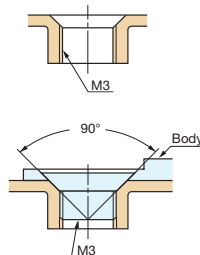
| Item No. | Magnetic Force (kg) | Weight (g) | Box (pcs) | Carton (pcs) |
|-----------|---------------------|------------|-----------|--------------|
| MC-YN001P | 2.7 (5.9 lbs) | 7.5 | 100 | 1000 |

| Part Name | Material | Finish |
|------------------------|-----------|--------|
| Magnet | Neodymium | Nickel |
| Base/Yoke/Counterplate | Steel | Nickel |

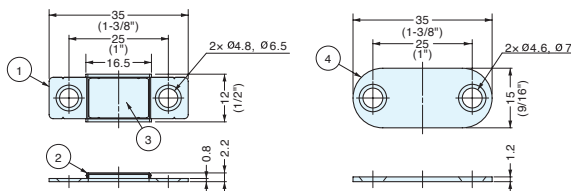
ULTRA THIN STAINLESS STEEL MAGNETIC CATCH



MC-YN015SP



- Ultra-thin magnetic catch with strong rare-earth (neodymium) magnet.
- 304 stainless steel yoke for high corrosion resistance.
- Magnetic catch includes self-tapping screws.
Note: 1) Magnetic force may be affected when used in/around water or high humidity.
2) Max. recommended temperature: 80°C (176°F).
3) Counterplate should not come into direct contact with magnet when closing.
4) Screw heads should not protrude above the base plate.



| No. | Part Name | Material | Finish |
|-----|--------------|---------------------|---------------|
| ① | Main Body | Stainless Steel | Plain |
| ② | Yoke | 304 Stainless Steel | |
| ③ | Magnet | Neodymium | Epoxy Coating |
| ④ | Counterplate | Stainless Steel | Plain |

| Item No. | Magnetic Force (kg) | Weight (g) | Box (pcs) | Carton (pcs) |
|------------|---------------------|------------|-----------|--------------|
| MC-YN015SP | 2.3 kg (5.0 lbs) | 7.3 | 100 | 2000 |