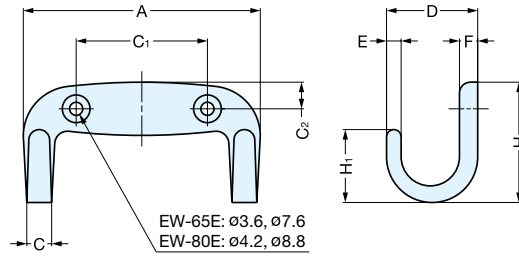


HOOK



EW-65E, 80E



EW-65E: $\phi 3.6, \phi 7.6$
EW-80E: $\phi 4.2, \phi 8.8$

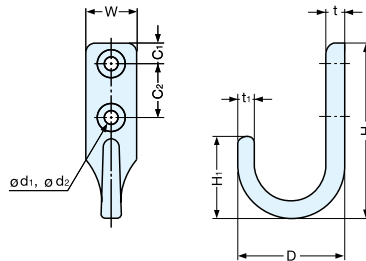
Material	Finish
304 Stainless Steel	Mirror

Item No.	A	C ₁	C	D	E	F	C ₂	H	H ₁	Load Capacity (kg)	Weight (g)	Box (pcs)	Carton (pcs)	Screw
EW-65E	65 (2-9/16")	36	6.5	25	4	5	7.3	33 (1-19/64")	20	20 (44 lbs)	52	10	100	3.1 × 16
EW-80E	80 (3-5/32")	44	8	32	5	6	9	42 (1-21/32")	25		93			3.8 × 20

HOOK



EL-25, 30



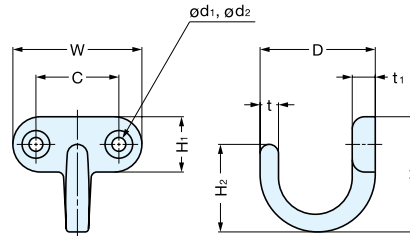
Material	Finish
304 Stainless Steel	Mirror

Item No.	D	H	H ₁	t	t ₁	W	C ₁	C ₂	d ₁	d ₂	Load Capacity (kg)	Weight (g)	Box (pcs)	Carton (pcs)	Screw
EL-25	26 (1-1/32")	40 (1-37/64")	19	5.5	4	12	5	12	3	6	20 (44 lbs)	19	30	300	2.7 × 16
EL-30	32 (1-17/64")	54.5 (2-9/64")	25	6	5	15	6	16	4	8		32	20	200	3.8 × 20

HOOK



EP-25, 40



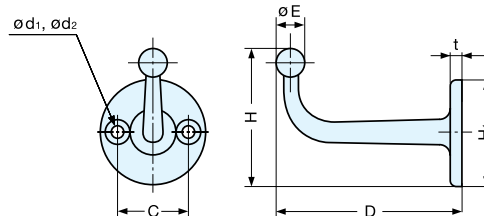
Material	Finish
304 Stainless Steel	Mirror

Item No.	D	W	H	H ₁	H ₂	t	t ₁	C	d ₁	d ₂	Load Capacity (kg)	Weight (g)	Box (pcs)	Carton (pcs)	Screw
EP-25	25 (63/64")	28	25 (63/64")	12	19	4	5	18	3	6	20 (44 lbs)	16	30	300	2.7 × 16
EP-40	32 (1-17/64")	36	33 (1-19/64")	16	25	5	6	23	4	8		31	20	200	3.8 × 20

HOOK



FC-50, 65



* Available in titanium by special order.

Material	Finish
304 Stainless Steel	Mirror

Item No.	D	H	H ₁	t	C	d ₁	d ₂	E	Load Capacity (kg)	Weight (g)	Box (pcs)	Carton (pcs)	Screw
FC-50	47 (1-27/32")	37 (1-29/64")	28	3	18.5	3.3	6.5	6.5	10 (22 lbs)	25	40	480	3.1 × 16
FC-65	65 (2-9/16")	44 (1-47/64")	35	4	22.5	4.2	8	8	12 (26 lbs)	54.5	20	240	3.8 × 20