

# TRIOMPHE

SM23738SDBRG

Inspired by arch bridges of Venice and 12th Century Rome, Triomphe is shaped by truss-like metal and accented with custom crystals to match. Antiqued Gold Leaf with contemporary Topaz tinted glass fonts are complemented by coordinating shades of rich silk blends and Studio•M metallic patterned liners. Also available in Silver Ash with Clear glass fonts.

**Finish**  
Brushed Gold

**Shade/Glass**  
Sedona with Bronze Metallic Lining

**Measurements**  
W38" x H31.5"

**Canopy/Back Plate**  
6" x 0.75"

**Min/Max OAH**  
31"/105.5"

**Bulb Specifications**  
8 x 40W Max E12

**Certification**  
ETL & CETL

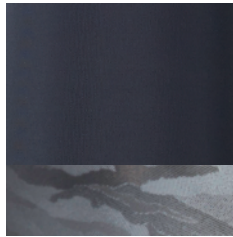


**Finish Options:**

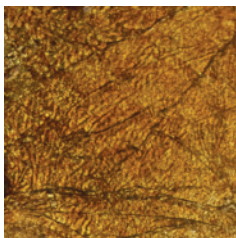
**Shade Options:**



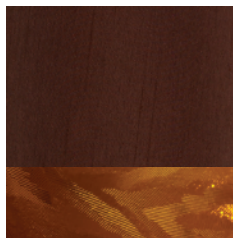
Silver Ash



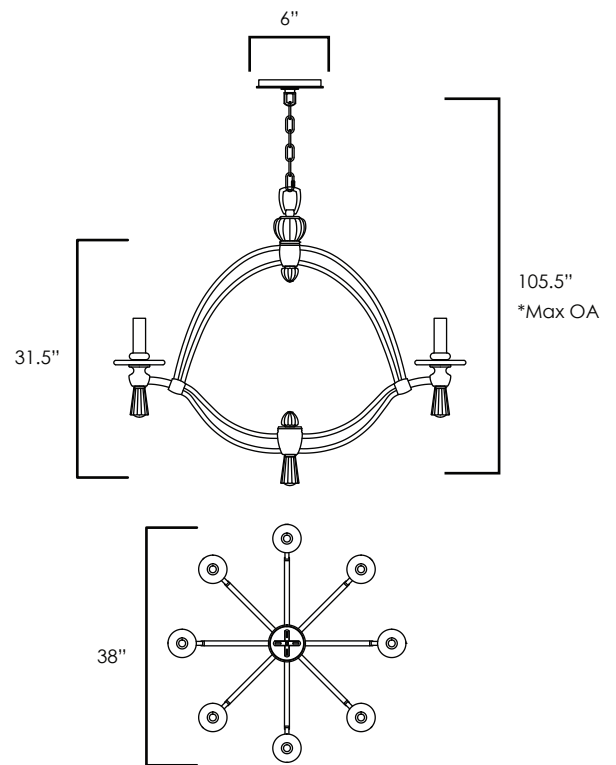
Storm Grey



Brushed Gold



Sedona



\*max overall height

## STUDIO•M

A Maxim Group Company  
StudioMlighting.com • 1.626.956.4209

Job Name:	Job Type:
Quantity:	Comments: