

TRIOMPHE

SM23731SDBRG

Inspired by arch bridges of Venice and 12th Century Rome, Triomphe is shaped by truss-like metal and accented with custom crystals to match. Antiqued Gold Leaf with contemporary Topaz tinted glass fonts are complemented by coordinating shades of rich silk blends and Studio•M metallic patterned liners. Also available in Silver Ash with Clear glass fonts.

Finish:
Brushed Gold

Shade/Glass
Sedona with Bronze Metallic Lining

Measurements
W5.25" x H8.75" x EXT 7.25"

Canopy/Back Plate
W5.25" x H7.75"

Min/Max OAH
HCO 4"

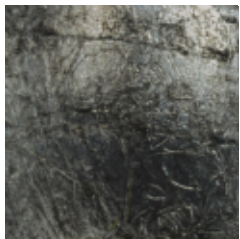
Bulb Specifications
1 x 40W Max E12

Initial Lumen
2800 lm

Certification
ETL & CETL

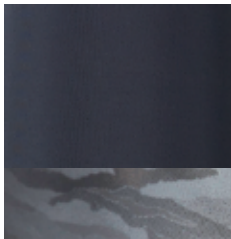


Finish Options:

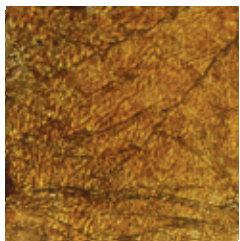


Silver Ash

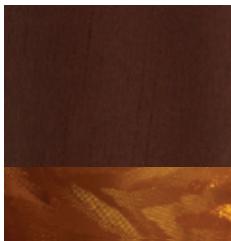
Shade Options:



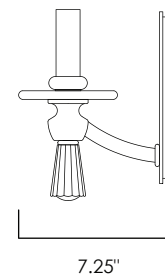
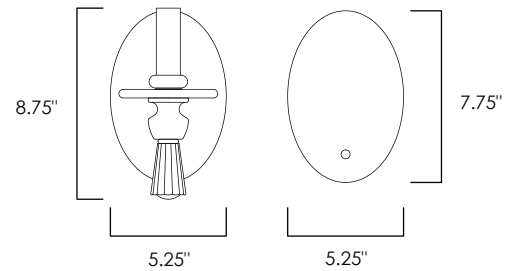
Storm Grey



Brushed Gold



Sedona



STUDIO•M

A Maxim Group Company
StudioMlighting.com • 1.626.956.4209

Job Name:	Job Type:
Quantity:	Comments: