

60" x 32" Curve Wall Set with Backer Boards 71224106

Features

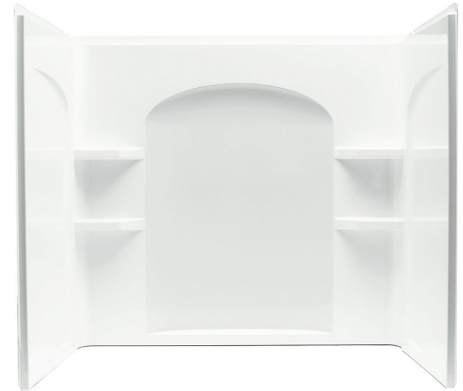
- Modular design allows it to be moved around corners and through doorways with ease.
- Durable high gloss finish.
- Curve wall with a smooth, contemporary look and ample shelving.

Material

- Compression molded from our exclusive solid Vikrell® material.

Installation

- Some caulk required for proper installation.
- Wall surround includes backer boards for future grab bar installation.



Codes/Standards

CSA B45.5/IAPMO Z124
ASTM E162
ASTM E662
Greenguard UL 2818 - Gold



STERLING® Warranty - Fixtures Made of Solid Vikrell Material

See website for detailed warranty information.

Available Color/Finishes

Color tiles intended for reference only.

Color	Code	Description
-------	------	-------------

- | | | |
|--------------------------------------------------------------------------------------|----|---------|
|  | 0 | White |
|  | 96 | Biscuit |



60" x 32" Curve Wall Set with Backer Boards 71224106

No image available.

This product is a component and not intended to be a standalone installation.

Technical Information

All product dimensions are nominal.

Installation: 3-Wall Alcove

Door height required: 55-1/2" (1410 mm)

Door width required: 57-11/16" (1465 mm)

Notes

Install this product according to the installation guide.

Studs should be positioned roughly as shown.

Double studding is recommended for pivot shower door installations.

Attach grab bars at the specified backer board locations only.