

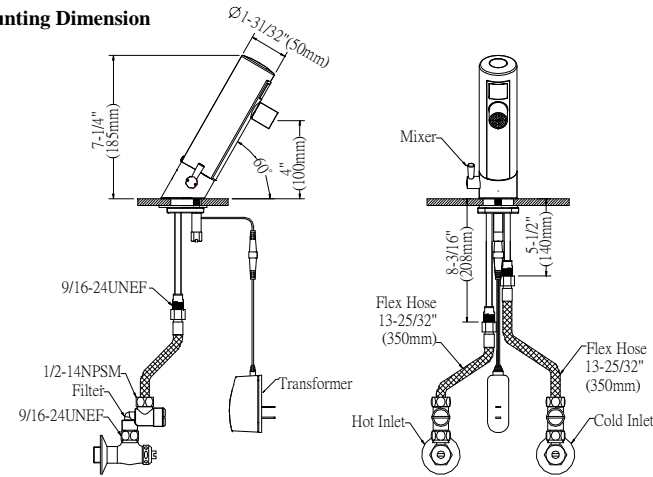
# SPEAKMAN®

Absolutely the best.

400 ANCHOR MILL ROAD | NEW CASTLE, DE 19720  
www.speakmancompany.com  
PHONE: 800-537-2107 | FAX: 800-977-2747

## Installation instruction of S-9602 / S-9612

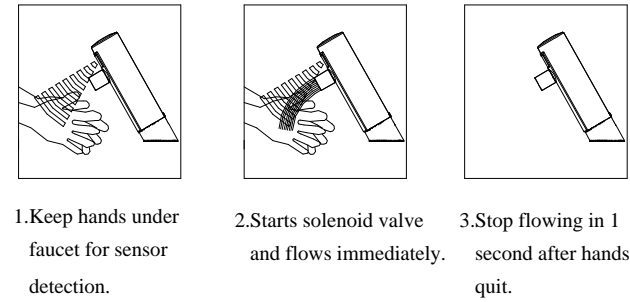
### Mounting Dimension



### Specification

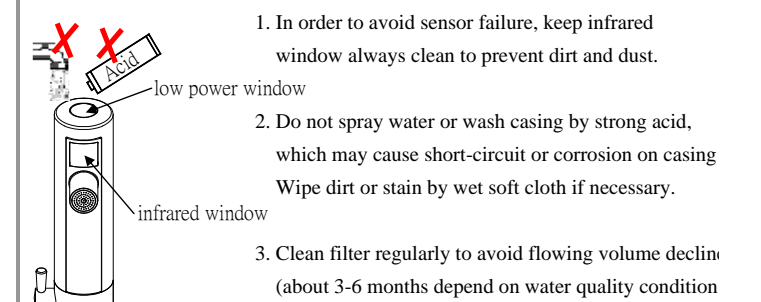
<b>Model</b>	<b>S-9602 / S-9612 (with 4" Deck Plate)</b>
<b>Product</b>	<b>Automatic Infrared Sensor Faucet</b>
<b>Material of Casing</b>	<b>Chrome-plated brass casting</b>
<b>Power Apply</b>	<b>AC110V 50/60 Hz</b>
<b>Power Consumption</b>	<b>5W below</b>
<b>Sensory Range</b>	<b>Automatic adjustment(2"-8")</b>
<b>Protection</b>	<b>Automatic flow stop after 1 minute in case of a continuous abnormal flow</b>
<b>Delay Time</b>	<b>0.5 - 1.0 seconds</b>
<b>Applicable water pressure</b>	<b>10-100 PSI</b>
<b>Flowing Volume</b>	<b>0.5GPM (1.9L/min) MAX</b>
<b>Applicable Water Temperature</b>	<b>39°F~ 185°F</b>
<b>Ceramic Bore Diameter</b>	<b>1-1/4" MIN</b>

### Operation



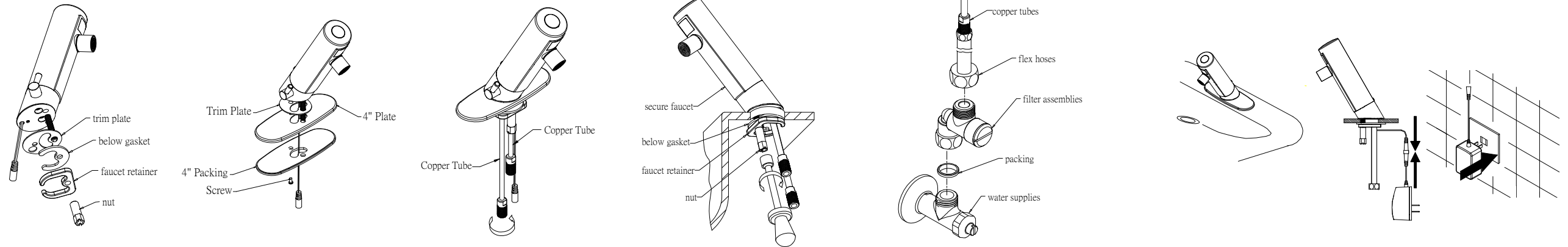
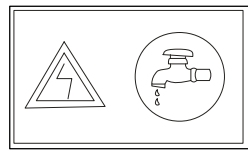
1. Keep hands under faucet for sensor detection.
2. Starts solenoid valve and flows immediately.
3. Stop flowing in 1 second after hands quit.

### Caution



1. In order to avoid sensor failure, keep infrared window always clean to prevent dirt and dust.
2. Do not spray water or wash casing by strong acid, which may cause short-circuit or corrosion on casing. Wipe dirt or stain by wet soft cloth if necessary.
3. Clean filter regularly to avoid flowing volume decline (about 3-6 months depend on water quality condition)

### Installation Steps



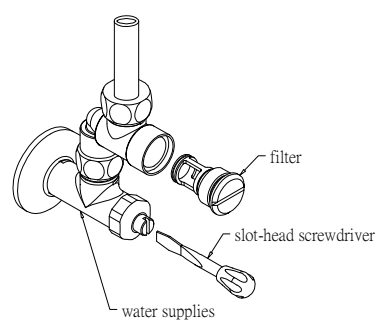
### Check electric power and water supply:

- Clean miscellaneous article inside of water pipe to avoid obstruction and faucet failure.
- Affirm specification of electric power and faucet model to avoid inflammation.

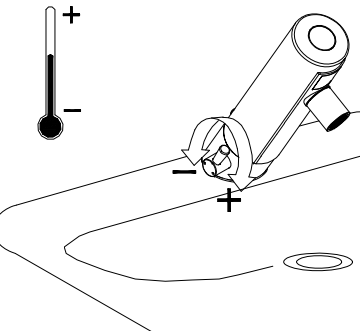
- (1) Remove nut, faucet retainer and below gasket. (keep trim plate)
- (2) Secure the 4" plate & packing with a screw.
- (3) Fasten copper tubes onto faucet main body with wrench.  
(Longer copper tube connected to hot water, Shorter copper tube connected to cold water)
- (4) Firmly secure faucet by tools on the lavatory or deck.
- (5) Turn on water supplies to spout and flush out dirty water with miscellaneous article.
  1. Firmly secure filter assemblies by tools above water supplies.
  2. Fasten flex hoses onto outlet of filter assemblies, and inlet of copper tubes.

※Remind to secure filter assembly to avoid faucet's abnormal activation.
- (6) Electrified and watered in accordance with following steps.
  1. Confirm no obstacle on basin, deck and faucet's infrared window.
  2. Connect adapter to faucet's power connector.
  3. Connect power adapter and electric socket, and do not approach infrared window within 3 seconds after faucet electrified.
  4. Turn on water supplies and adjust to proper flow.

### Clean filter assembly and flow adjustment

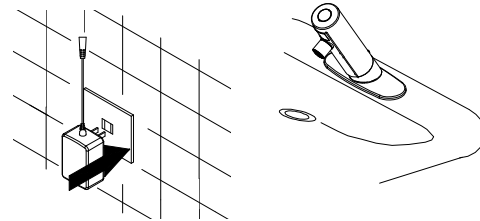


1. Bad water quality resulted filter obstruction and flow decline. Turn off water supplies by a slot-head screwdriver and take filter out for cleaning.
2. Adjust proper flow by a slot-head screwdriver.



Adjust required temperature by adjustable handle as above chart.

### Sensory range adjustment(automatic adjustment)



1. Remove power adapter from socket.
2. Reconnect power adapter to socket after 10 seconds, do not approach basin or infrared window, an automatic adjustment of sensory range is completed
3. Faucets completely works after turning on water supplies.

### Troubleshooting

Situation	Possible Cause	Solution
No function(LED flashes)	1. dirty infrared window	wipe infrared window by tissues
	2. electric power not connected	check power plug or voltage
	3. control circuit failure	replace control circuit
No function (LED keep lighting when using)	1. water supplies not turn on yet	check water supplies
	2. solenoid valve's connector loose	reconnect solenoid valve's connector
	3. solenoid valve failure	replace solenoid valve
	4. control circuit failure	replace control circuit
Continuous flow	1. dirty infrared window	wipe infrared window by tissues
	2. over sensory range	reset sensory range
	3. solenoid valve failure	replace solenoid valve
Low flow volume	1. less water supply	increase water supply
	2. filter obstructed	clean filter
	3. aerator obstructed	clean aerator
Abnormal spout	1. dirty infrared window	wipe infrared window by tissues
	2. over sensory range	reset sensory range

### Spare parts

