



FEATURES:

- 9 in. "S" cast brass arm for downpour showers.

COMPLIANCE:

- Meets existing ASME A112.18.1/CSA B125.1 Standard

FINISHES:

ADD SUFFIX TO MODEL #

- Polished Chrome (standard)
- Oil Rubbed Bronze -ORB
- Polished Brass -PB
- Brushed Nickel -BN

WARRANTY:

- 1 year limited

SEE REVERSE FOR ROUGH-IN DIMENSIONS

THIS SPACE FOR ARCHITECT/ENGINEER APPROVAL.

SPEAKMAN®

400 ANCHOR MILL ROAD | NEW CASTLE, DE 19720
P: 800-537-2107 | F: 800-977-2747
WWW.SPEAKMANCOMPANY.COM

REVISION DATE: JANUARY 2014

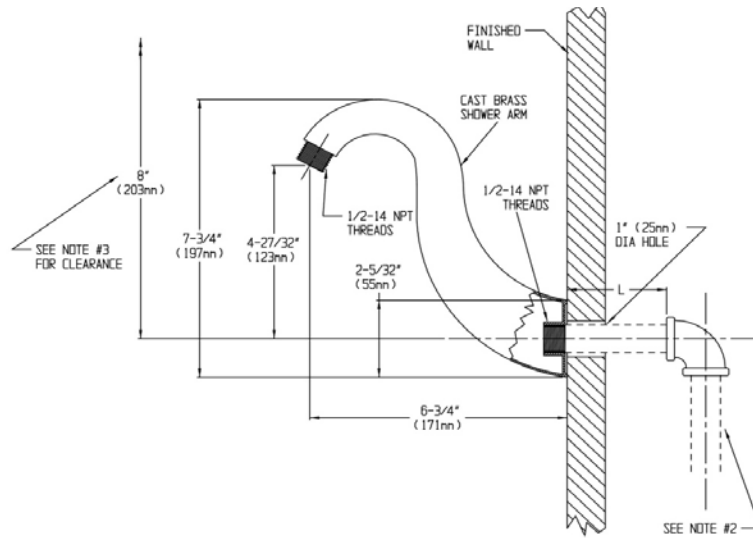


Management Systems
Registered to ISO 9001

SPEAKMAN®

Arm & Flange S-2530

SPECIFICATION



NOTE: 1. Speakman recommends the use of a qualified plumber to properly install the cast brass shower arm and to size the 1/2 - 14 NPT threaded nipple. Make sure the shower arm is tightened completely to prevent leaks. 2. All behind wall piping not supplied. 3. Must have 8" of clearance 360° around centerline of shower arm for proper installation.

NOTE: All dimensions are in inches (in) unless otherwise specified and are subject to change without notice.

THIS SPACE FOR ARCHITECT/ENGINEER APPROVAL.

SPEAKMAN®

400 ANCHOR MILL ROAD | NEW CASTLE, DE 19720
P: 800-537-2107 | F: 800-977-2747
WWW.SPEAKMANCOMPANY.COM



Management Systems
Registered to ISO 9001

REVISION DATE: JANUARY 2014