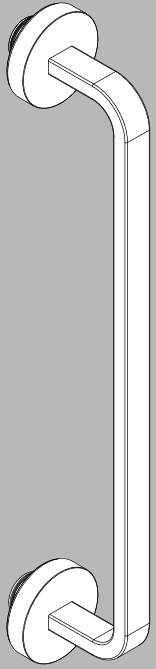


INSTRUCTIONS FOR MODELS

SH-2704



NEED HELP?

For additional assistance or service please contact:

SPEAKMAN®

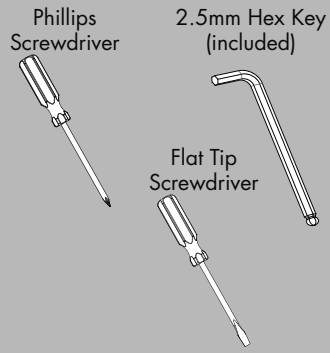
800-537-2107

customerservice@speakman.com

www.speakman.com

92-SH-2704-01

TOOLS AND SUPPLIES



IMPORTANT

- Do not over-tighten any connections or damage may occur.
- Be sure to read instructions thoroughly before beginning installation.
- Glass Shower Door as shown here in the Installation Steps and Rough-In Diagram is for reference only and is not included with the product.

SAFETY TIPS

Cover the drain to prevent any loss of parts.

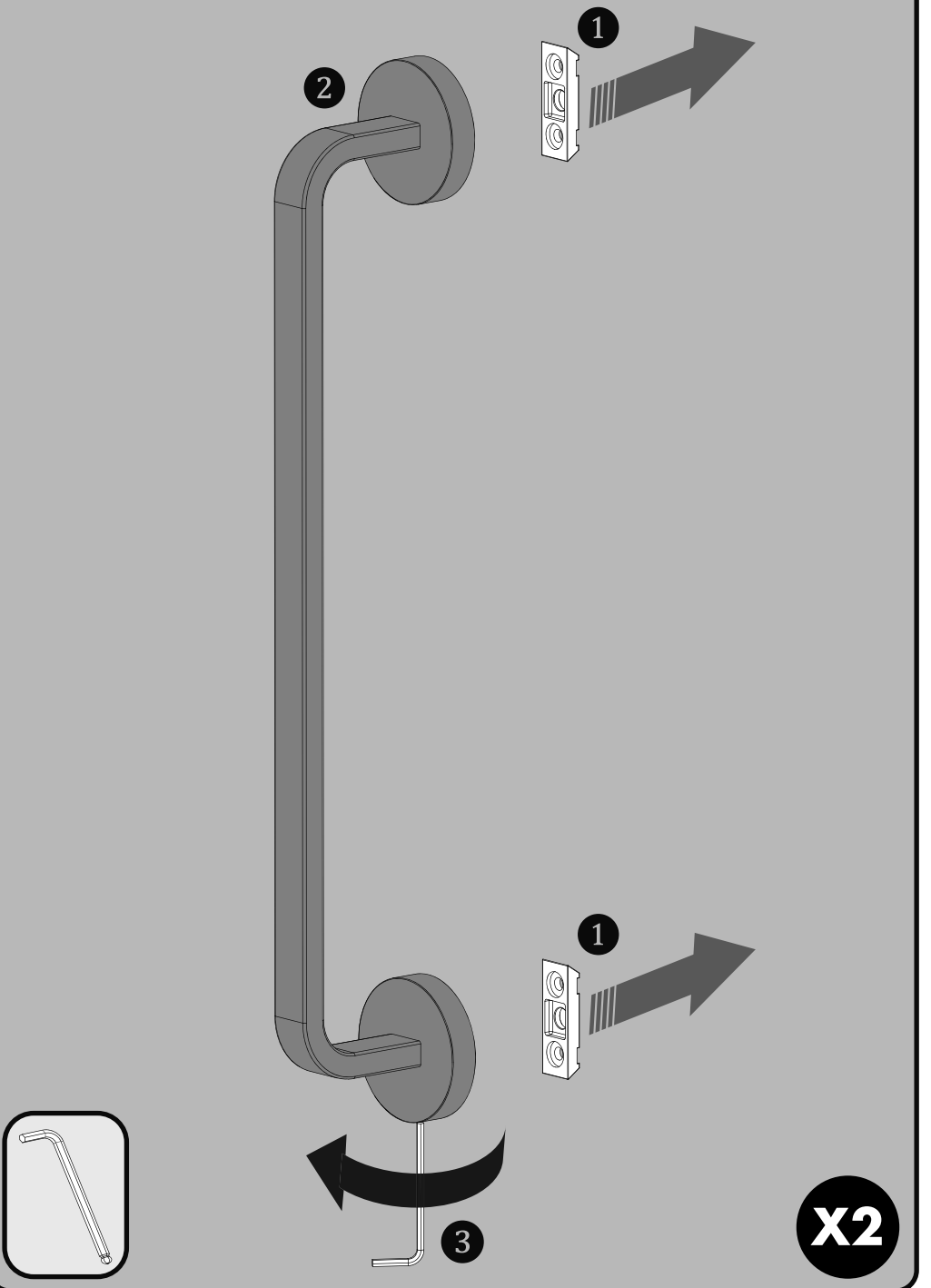
MAINTENANCE

Your new Speakman Product is designed for years of trouble-free performance. Keep it looking new by cleaning it periodically with a soft cloth. The use of harsh chemicals and abrasives on any of the Speakman custom finish products may damage the finish and void the product warranty. Please be sure to only use approved cleaners. Please contact Speakman for any clarification of acceptable cleaners.

WARRANTY

Warranty information can be found at: www.speakman.com

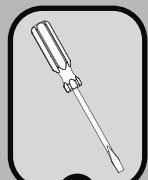
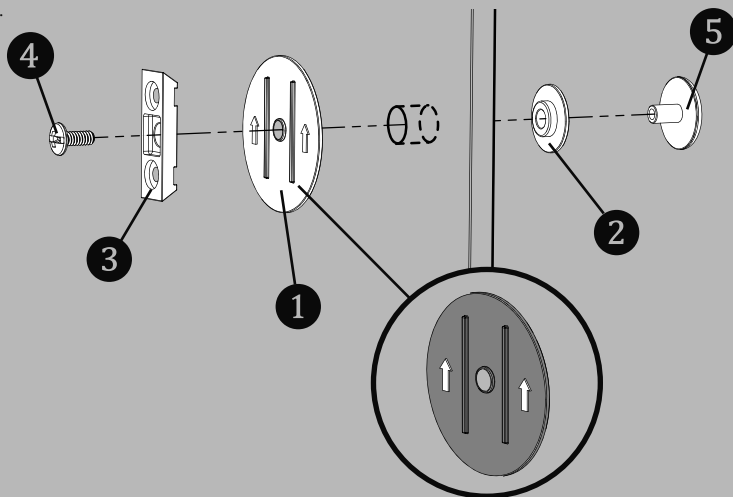
1 If the Mounting Plate (1) comes pre-installed in the Accessory (2), remove the Mounting Plate by loosening, but not removing the pre-installed Set Screw at bottom with the included 2.5mm Hex Key (3).



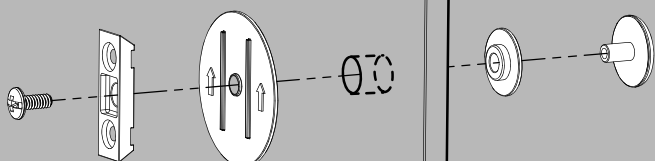
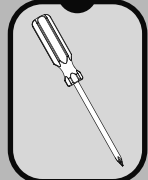
2 Place a Clear Gasket (1) on one side of the glass door. The Gasket should be aligned so the side with markings is facing outward, and the arrows are facing up. Place a backside Gasket (2) on the other side of the glass door. Place a Mounting Bracket (3) onto the Clear Gasket (1) and secure into position with Mounting Screw (4) and Decorative Barrel Nut (5).

Note: There are two different length Decorative Barrel Nuts included. Select the Decorative Barrel Nut that is appropriate for the thickness of your Glass Door.

Verify all arrows on the Clear Gaskets (1) are perfectly vertical and facing upwards. Adjust accordingly and secure into position by tightening the Mounting Screw (4). Take care to not over tighten or damage may occur. Repeat this process for the other end mounting. Verify all Mounting Brackets (3) are perfectly vertical as well once secured.

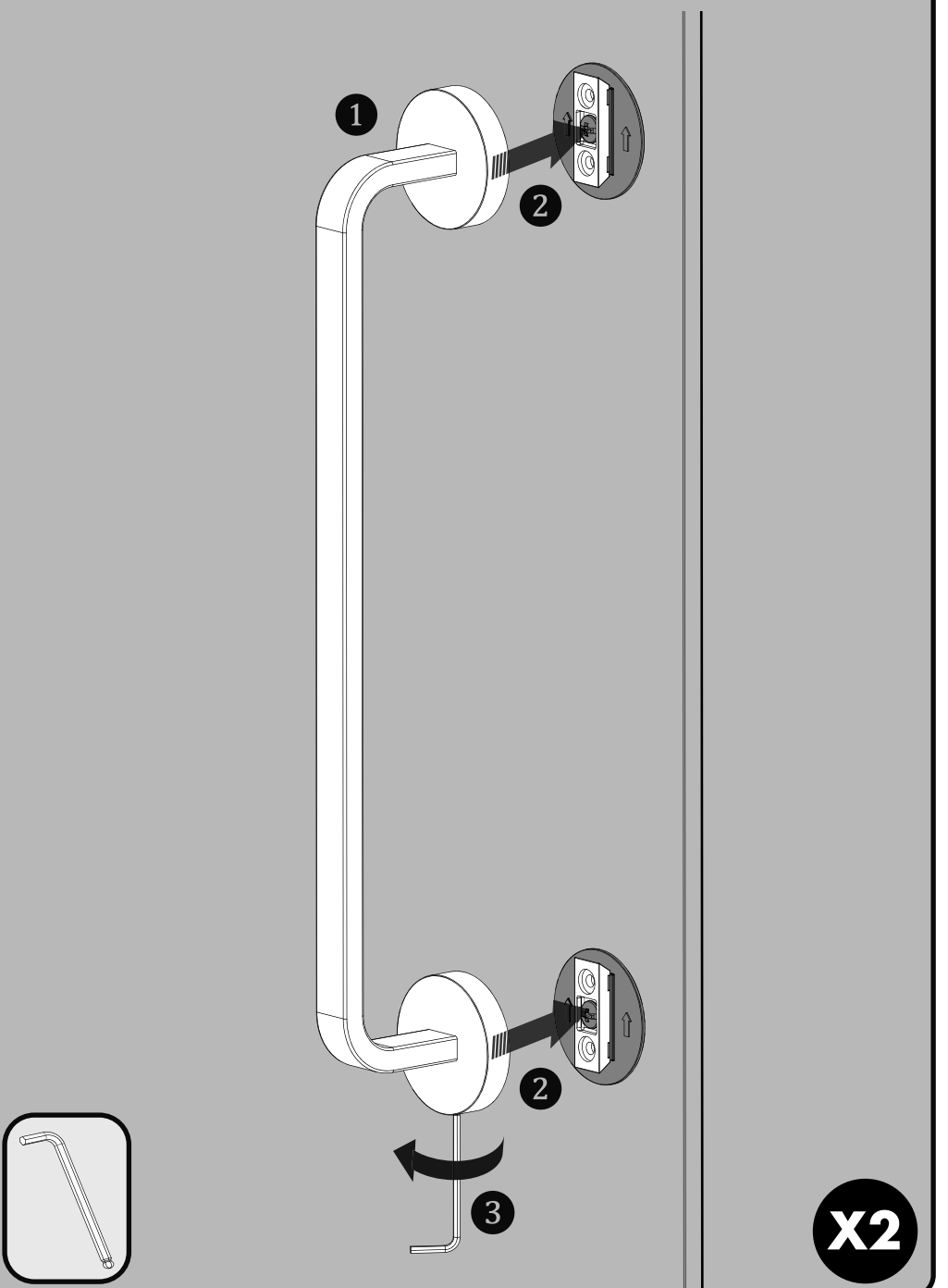


OR

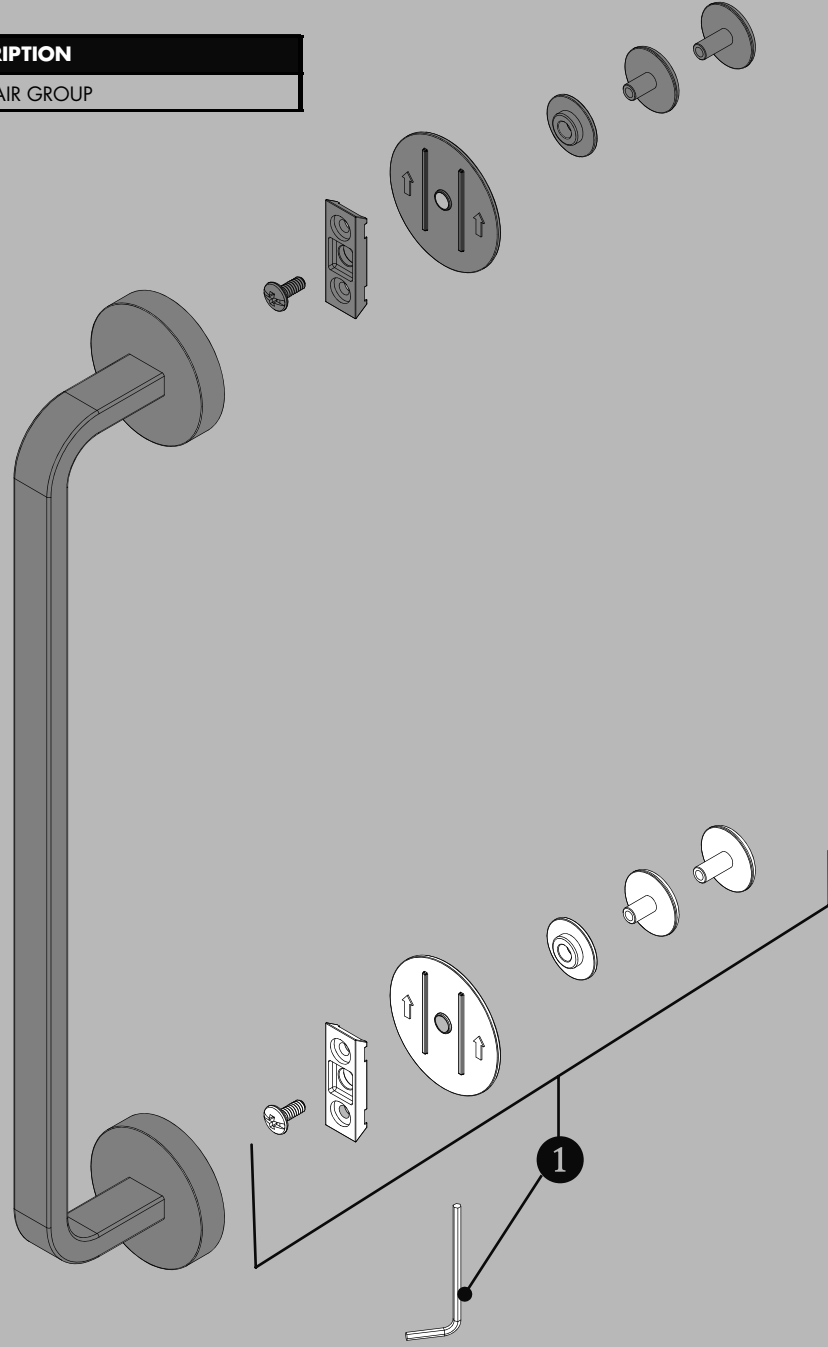


X2

3 Place Handle Assembly (1) over the Mounting Brackets (2) and secure it by tightening the pre-installed Set Screws with the included 2.5mm Hex Key (3). Verify that the Glass Door Handle Assembly is properly secured by pulling/pushing it.



ITEM NO.	PART NO.	DESCRIPTION
1	RPG05-113619	MOUNTING HARDWARE REPAIR GROUP



SH-2704 ROUGH-IN DIAGRAM

NOTES:

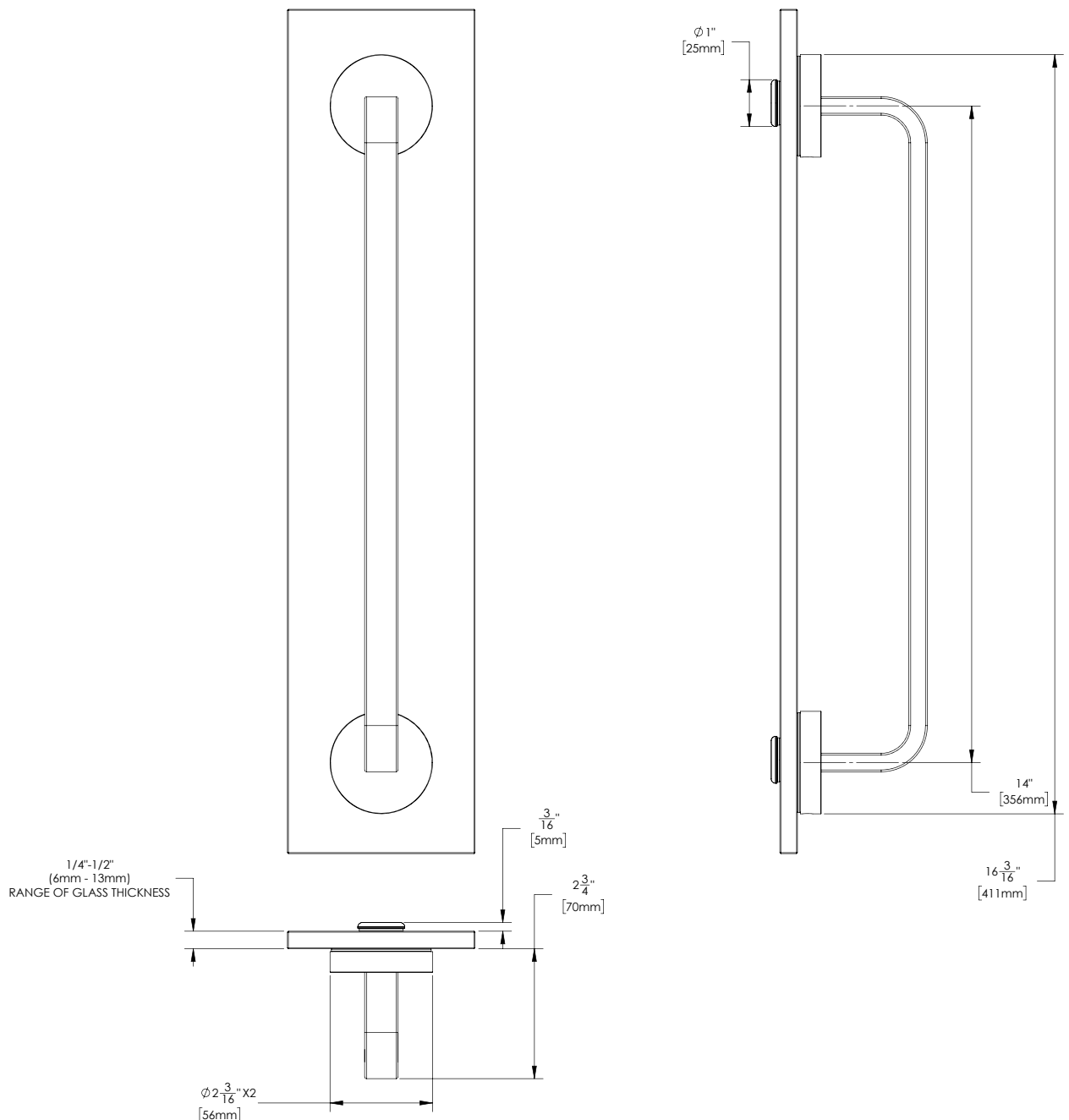
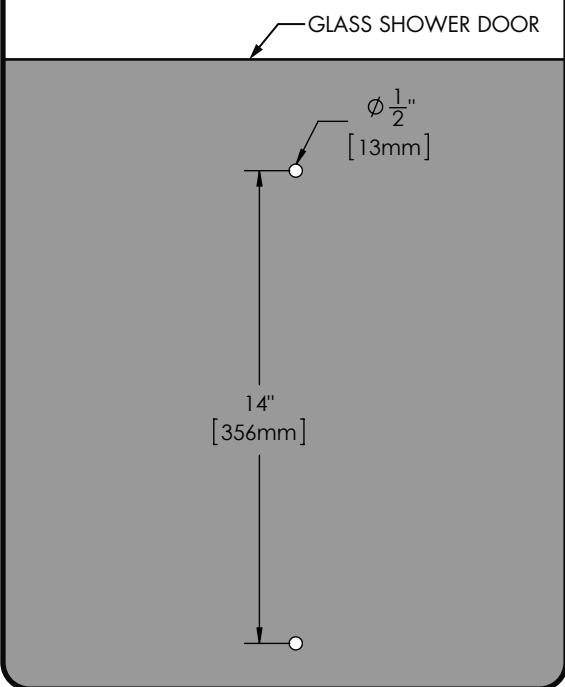
COMPLIANCE:

Finishes Meet: ASME A112.18.1
CSA B125.1

CONNECTIONS:

- Includes All Necessary Mounting Hardware.

SHOWER DOOR ROUGH-IN



DIMENSIONS SUBJECT TO CHANGE WITHOUT NOTICE.
GLASS SHOWER DOOR AS SHOWN HERE IN THE ROUGH-IN DIAGRAM IS FOR REFERENCE ONLY AND IS NOT INCLUDED WITH THE PRODUCT.