

## Sentinel Mark II® Thermostatic Diverter Shower Valve

### MODELS:

- CPV-T-DV: Thermostatic Diverter Shower Valve  
Sweat & Thread Connections
- CPV-T-DV-PXC: Thermostatic Diverter Shower Valve  
PEX F1807 Crimp Inlet Connections
- CPV-T-DV-PXE: Thermostatic Diverter Shower Valve  
PEX F1960 Cold-Expansion Inlet  
Connections

### FEATURES:

- Brass body construction
- Four port valve with sweat & thread, PXC or PXE inlet connections (depending on model), and sweat & thread shower and tub outlets
- Thermostatic element and built-in check stops
- Blends hot and cold water to ensure constant and safe temperature thus preventing Scalding via shuttling Thermostatic Element
- Ceramic diverter cartridge allows for transition between two independent settings
- Adjustable temperature limit stop to control maximum temperature setting
- Integral stops allow water shut off for servicing valve
- Supports back-to-back installation
- Includes rough-in template and 1/2" pipe cap

### TRIM OPTIONS:

- |              |               |
|--------------|---------------|
| • CPT-1400-P | • CPT-10400-P |
| • CPT-1401   | • CPT-24400   |
| • CPT-3401   | • CDCPT25401  |
| • CPT-7400-P | • CDCPT25403  |
| • CPT-8400-P | • CPT-27400   |
| • CPT-8401-P |               |

### STANDARDS:

- ASME A112.18.1/CSA B125.1 certified
- ASSE 1016 certified

### WARRANTY:

Visit [speakman.com](http://speakman.com) for full product warranty information

- 5 Year Limited Warranty (commercial)
- 5 Year Limited Warranty (residential)



CPV-T



CPV-T-PXC



CPV-T-PXE

1. All dimensions are in inches (millimeters) unless otherwise specified and are subject to change without notice. 2. For ADA mounting locations, consult ADAAG, ANSI A117.1, and state regulations.

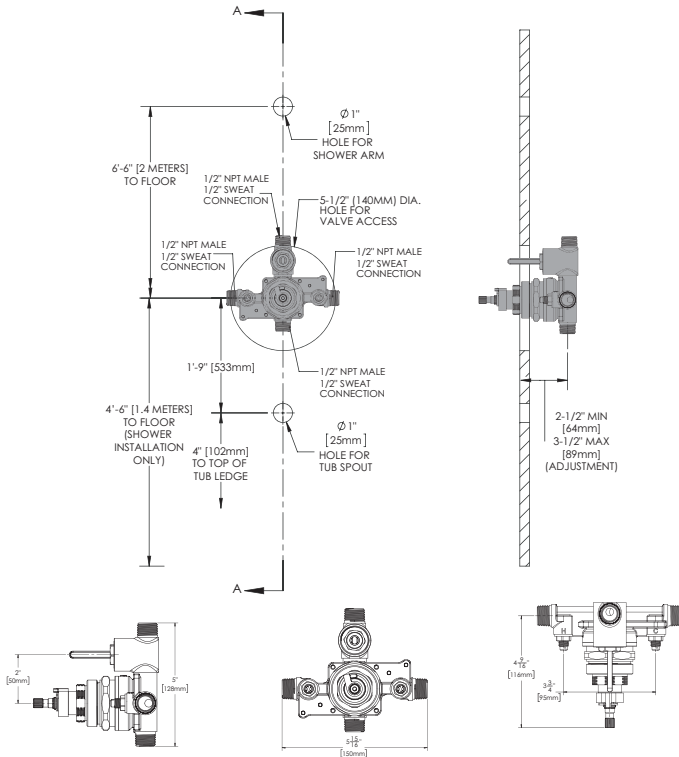
Architect/Engineer Approval Space:

SPEAKMAN  
400 ANCHOR MILL ROAD  
NEW CASTLE, DE 19720

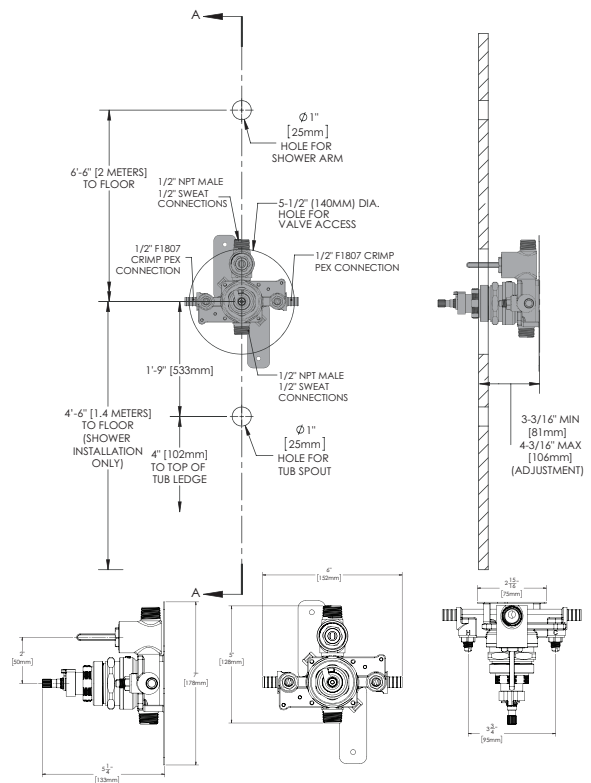
P: 800-537-2107  
F: 800-977-2747  
W: WWW.SPEAKMAN.COM  
R: 02-JULY 2018

## Sentinel Mark II® Thermostatic Diverter Shower Valve

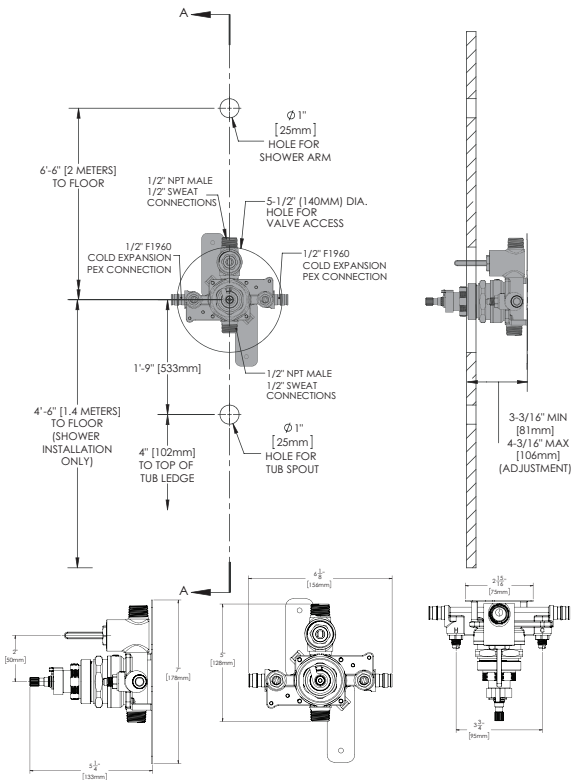
### CPV-T-DV



### CPV-T-DV-PXC



### CPV-T-DV-PXE



1. All dimensions are in inches (millimeters) unless otherwise specified and are subject to change without notice. 2. For ADA mounting locations, consult ADAAG, ANSI A117.1, and state regulations.

Architect/Engineer Approval Space:

SPEAKMAN  
400 ANCHOR MILL ROAD  
NEW CASTLE, DE 19720

P: 800-537-2107  
F: 800-977-2747  
W: WWW.SPEAKMAN.COM  
R: 02-JULY 2018