

Sentinel Mark II® Thermostatic Shower Valve

MODELS:

- CPV-T: Thermostatic Shower Valve
Sweat & Thread Connections
- CPV-T-PXC: Thermostatic Shower Valve
PEX F1807 Crimp Inlet Connections
- CPV-T-PXE: Thermostatic Shower Valve
PEX F1960 Cold-Expansion Inlet Connections

FEATURES:

- Brass body construction
- Four port valve with sweat & thread, PXC or PXE inlet connections (depending on model), and sweat & thread shower and tub outlets
- Thermostatic element and built-in check stops
- Blends hot and cold water to ensure constant and safe temperature thus preventing scalding via shuttling thermostatic element
- Adjustable temperature limit stop to control maximum temperature setting
- Integral stops allow water shut off for servicing valve
- Supports back-to-back installation
- Includes rough-in template and 1/2" pipe cap

TRIM OPTIONS:

- | | |
|--------------|---------------|
| • CPT-1000-P | • CPT-10000-P |
| • CPT-1001 | • CPT-24000 |
| • CPT-3001 | • CDCPT25001 |
| • CPT-7000-P | • CDCPT25003 |
| • CPT-8000-P | • CPT-27000 |
| • CPT-8001-P | |

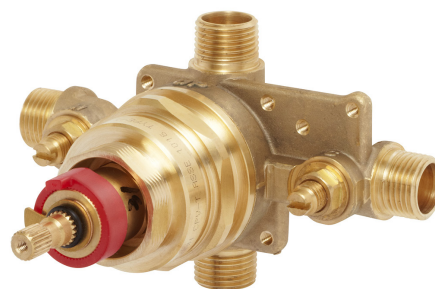
STANDARDS:

- ASME A112.18.1/CSA B125.1 certified
- ASSE 1016 certified

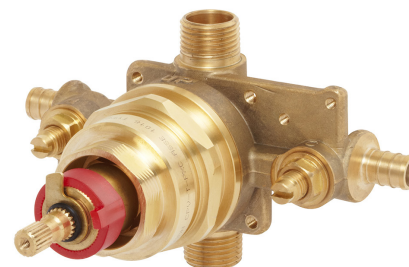
WARRANTY:

Visit speakman.com for full product warranty information

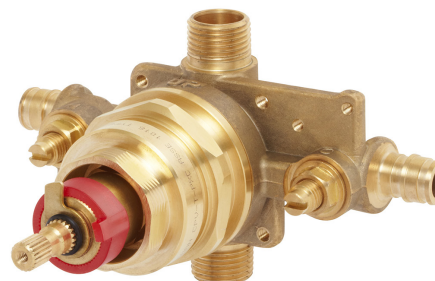
- 5 Year Limited Warranty (commercial)
- 5 Year Limited Warranty (residential)



CPV-T



CPV-T-PXC



CPV-T-PXE

1. All dimensions are in inches (millimeters) unless otherwise specified and are subject to change without notice. 2. For ADA mounting locations, consult ADAAG, ANSI A117.1, and state regulations.

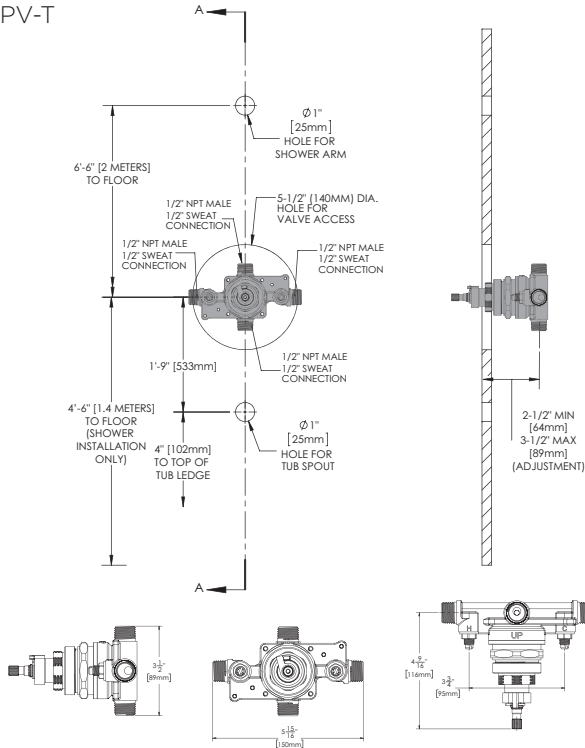
Architect/Engineer Approval Space:

SPEAKMAN
400 ANCHOR MILL ROAD
NEW CASTLE, DE 19720

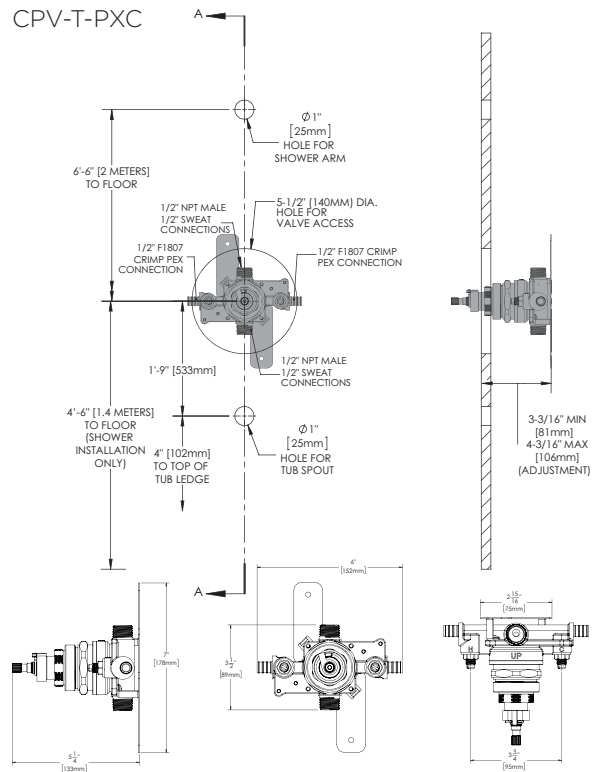
P: 800-537-2107
F: 800-977-2747
W: WWW.SPEAKMAN.COM
R: 02-JULY 2018

Sentinel Mark II® Thermostatic Shower Valve

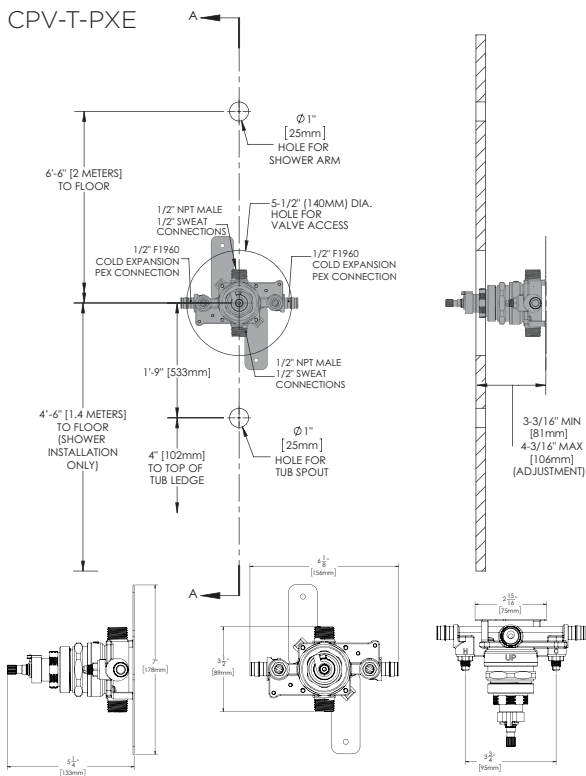
CPV-T



CPV-T-PXC



CPV-T-PXE



1. All dimensions are in inches (millimeters) unless otherwise specified and are subject to change without notice. 2. For ADA mounting locations, consult ADAAG, ANSI A117.1, and state regulations.

Architect/Engineer Approval Space:

SPEAKMAN
400 ANCHOR MILL ROAD
NEW CASTLE, DE 19720

P: 800-537-2107
F: 800-977-2747
W: WWW.SPEAKMAN.COM
R: 02-JULY 2018