



JencoFan

PRICE LIST

Effective January 1, 2018

Expires December 31, 2018

Group A - Residential & Light Commercial

PC - Premium Choice Fans

reFresh for Outside Air Options

Energy Recovery Ventilators (ERV)

Group B - Commercial Product Line (Quickship)

Dampers, Shutters, & Louvers

U.S. Distribution Center

S&P USA

6393 Powers Avenue

Jacksonville, Florida 32217

Phone: 800.961.7370

Fax: 800.961.7379

www.solerpalau-usa.com

www.jencofan.com

custserv.jax@solerpalau.com

This price list supersedes all previous price lists and must be used with a current discount multiplier schedule.

TERMS & CONDITIONS OF SALE

Applies to all products in this Price List: Group A, PC, reFresh, ERV, Group B, and Dampers, Shutters, & Louvers

TERMS AND PRICES

1. Terms and payment on all orders are subject to the approval of S&P's credit department and unless otherwise stated, are 2% 10 NET 30 days from the date of invoice without regard to the date of delivery of the Products. All orders will be COD prior to credit approval. No prox billing. 1 ½% charge on all invoices over 30 days.
2. Prices and deliveries are FOB S&P warehouse, or as otherwise stated, and the risk of loss and damage shall pass to Buyer upon the delivery to the parcel carrier.
3. Buyer shall pay S&P the amount of any sales, use or any other local, provincial/state or federal taxes that arise from the sale or delivery of the Products.
4. All pricing will be according to the current S&P price list. Verbal quotes obtained via telephone are not binding, and subject to correction by the current printed S&P price list. Unless a pricing quote is in writing from S&P, the prices on the current price list supersedes all prior price quotes.
5. The prices of any Product are subject to increase by S&P to reflect increased costs of labor, raw materials, components, parts, overhead and other expenses.
6. S&P reserves the right to change prices and specifications without notice.
7. No order will be shipped if any invoices are past due.
8. Next day or second day air shipments received after 12:00 PM EST are processed the following work day.

SHIPPING AND DELIVERY

1. Buyer's receipt of any products delivered by S&P shall be any unqualified acceptance of, and a waiver by Buyer for any and all claims with respect to, such Products on the earliest to occur of 1) payment for the Products, or 2) failure of S&P to receive notice in writing of shortages in the Products within ten (10) days of their delivery to Buyer.
2. UNDER NO CIRCUMSTANCES WILL S&P BE RESPONSIBLE FOR CONSEQUENTIAL OR INCIDENTAL DAMAGES ARISING OUT OF OR OWING TO ANY DELAYS IN DELIVERY. (See Return Policy).

FREIGHT POLICY

1. S&P will prepay freight on items marked A under the "Prepaid Ship" column: \$1500 or more net order and no TR or HR Series on the order. S&P will prepay freight for orders that include 1 or more TR or HR Series: \$1750 or more net order. Items marked B under the "Prepaid Ship" column and/or Group B - Commercial Products will ship plus freight. For special or non-stock products check with S&P Customer Service. Orders that include special or non-stock Products will be processed as split shipments with stock items shipped at once and special or non-stock Products shipped when available unless a notation to the contrary appears on Buyer's purchase order. If Buyer specifies express or air shipment, Buyer shall pay the express or air and freight rates. (See Shipping Policy for additional information).
2. **Any additional** freight charges for delivery will be billed to customer upon receipt of freight bill to S&P, i.e. residential address delivery fee, lift gate or pallet jack.

DAMAGES & SHORTAGES

1. Claims for damages or shortages must be reported within ten (10) days of receipt of Product.
2. For any Product received damaged by a trucking company, THESE INSTRUCTIONS MUST BE FOLLOWED:
 1. If Product received by parcel carrier:
Concealed damages: Keep all cartons, call for inspection and notify S&P immediately. Visible damages: Damaged goods due to shipping must be filed with parcel carrier.
 2. If Product received by a freight company:
All damages due to handling during shipping must be filed directly with the freight company. Claim must be made by receiver.
3. Shortages: Sign only for the number of pieces received, and call S&P immediately.

S&P RETURN POLICY

1. All returns must be preauthorized and shipped with a Returned Materials Authorization (RMA) number. This can be obtained only by Buyer from S&P.
2. RMA number must be clearly written on the outside of the carton, or the carton will be refused.
3. All Products being returned must be shipped prepaid.
4. Any Product returned to us that is not covered by Warranty will be returned, without action, to Buyer, freight collect; no credit will be issued.
5. Orders placed cannot be cancelled or altered nor can deferred deliveries of Products completed or in process be extended beyond original specified delivery dates, except with S&P's consent and upon terms which will indemnify S&P against loss.
6. Any claim based on the receipt of damaged products must be filed with the carrier which delivered the Products. S&P will not allow credit for the return of damaged Products.
7. Items from the Price List returned within 1 year from date of purchase are subject to a **25% restocking fee** for inspection and repackaging providing all items are in salable condition. No returns will be accepted beyond 12 months from date of sale.
8. No returns will be accepted for products not in the current Price List.
9. **PRODUCTS RETURNED WITHOUT S&P'S RETURN MATERIALS AUTHORIZATION NUMBER WILL NOT BE ACCEPTED. S&P WILL NOT ACCEPT THE RETURN OF ANY SPECIAL, NONSTOCK, OBSOLETE OR UNSALEABLE PRODUCTS.**

TERMS & CONDITIONS OF SALE, cont.

Applies to all products in this Price List: Group A, PC, reFresh, ERV, Group B, and Dampers, Shutters, & Louvers

S&P WARRANTY

THIS WARRANTY SUPERSEDES ALL PRIOR WARRANTIES

EXCEPT AS EXPRESSLY STATED IN THIS AGREEMENT, THERE ARE NO WARRANTIES, EXPRESS OR IMPLIED, BY OPERATION OF LAW OR OTHERWISE. S&P DISCLAIMS THE IMPLIED WARRANTIES OF MERCHANTABILITY AND FITNESS FOR A PARTICULAR PURPOSE AS TO BOTH S&P AND NON S&P PRODUCTS. S&P'S WARRANTIES EXTEND SOLELY TO ITS CUSTOMER. S&P WILL NOT BE LIABLE FOR ANY INCIDENTAL, INDIRECT, SPECIAL OR CONSEQUENTIAL DAMAGES, INCLUDING, BUT NOT LIMITED TO, LOSS OF USE, REVENUES, PROFITS OR SAVINGS, EVEN IF S&P KNEW OR SHOULD HAVE KNOWN OF THE POSSIBILITY OF SUCH DAMAGES.

EQUIPMENT WARRANTY AND DISCLAIMERS

1. Subject to conditions (2) through (7) below, S&P warrants that Equipment of its manufacture will be free from defects in material and workmanship (exclusive of abrasion, corrosion, or erosion) during the Warranty Period. During the Warranty Period, S&P will repair or replace any defective item of Equipment or part or component of Equipment, promptly sent to S&P by Customer, which S&P determines was defective due to faulty material or workmanship. "Warranty Period" means the period stated to be such based on the product type on page 78 of this Price List or as otherwise indicated in this Price List
2. Because Equipment requires ongoing maintenance, the preceding warranty is void if the maintenance specified by S&P as required maintenance has not been performed, as determined by S&P.
3. This Warranty is void if the S&P label control number or date of manufacture, which is affixed to the Equipment, has been removed or altered in any way
4. This Warranty does not apply to damages from shipping, either concealed or visible. Claim must be filed with freight company.
5. This Warranty does not apply to damages resulting from improper wiring or installation
6. The Warranty does not apply to damages or failure caused by acts of God, war, terrorism, riot, insurrection, or resulting from improper consumer procedures, such as:
 - Improper maintenance
 - Misuse, abuse, abnormal use, or accident, and
 - Incorrect electrical voltage or current.
7. This Warranty is in lieu of any other warranty, expressed, implied or written, and to any consequential or incidental damages, loss or property, revenues, or profit, or costs of removal, installation or reinstallation, for any breach of warranty.
8. The entire liability of S&P and Customer's exclusive remedy for any defective, non-S&P products provided under this Agreement is limited to their return to S&P within 90 days after shipment for refund of the amount paid to S&P for such products (not including any amounts paid for related services).

FACTORY RETURN

1. Have a Return Materials Authorization (RMA) number. This may be obtained by calling S&P at 800-961-7370. Please have Bill of Sale available.
2. The RMA number must be clearly written on the outside of the carton, or the carton will be refused.
3. All returned products must be shipped prepaid and be accompanied with a copy of the Bill of Sale.
4. Product will be repaired/replaced and shipped back to Buyer; no credit will be issued.
5. No field repair costs or expenses are covered.

OR

The Distributor may place an order for the warranty part and/or product and is invoiced. The Distributor will receive a credit equal to the invoice only after product is returned prepaid and verified to be defective.

S&P WARRANTY TERMS DO NOT PROVIDE FOR REPLACEMENT WITHOUT CHARGE PRIOR TO INSPECTION FOR A DEFECT. REPLACEMENTS ISSUED IN ADVANCE OF DEFECT INSPECTION ARE INVOICED, AND CREDIT IS PENDING INSPECTION OF RETURNED MATERIALS. DEFECTIVE MATERIAL RETURNED BY END USERS SHOULD NOT BE REPLACED BY THE DISTRIBUTOR WITHOUT CHARGE TO THE END USER, AS CREDIT TO DISTRIBUTOR'S ACCOUNT WILL BE PENDING INSPECTION AND VERIFICATION OF ACTUAL DEFECT BY S&P.

WARRANTY VALIDATION

1. The user must keep a copy of the Bill of Sale to verify purchase date.
2. These warranties give you specific legal rights, and are subject to any applicable consumer protection legislation.
3. You may have additional rights which vary from region to region.

Thank you for your business, we greatly appreciate your continued support. S&P welcomes your comments and suggestions.

Table of Contents

Terms & Conditions of Sale and Warranty.....	2-3
Group A - Residential & Light Commercial Products	6
Shipping Schedules.....	6
PV-POWERVENT Series.....	7
PV Bath Exhaust Kits	7
Dryer Booster Kits	7
Dryer Booster Kit Accessories and Switches.....	8
SWF-SIDEWALL Series	8
PRF-Radon Mitigation Fan Series.....	8
Radon Mitigation Accessories	8
TD-MIXVENT Series.....	9
TD Bath Exhaust Kits	9-10
TD-SILENT Series.....	10
TD Accessories.....	11
WA Model	12
DA Model	12
General Accessories.....	12-16
Electronic Accessories.....	17
PC - Premium CHOICE Bath Fans.....	18
Shipping Schedules.....	18
PC-Premium CHOICE Standard Series	19-21
PCV-Premium CHOICE Value Series.....	22-23
PCD-Premium CHOICE DC Motor Series.....	24-25
PCLP-Premium CHOICE Low Profile Series.....	26
PCRL-Premium CHOICE Recessed Vent Light Series	27
PC Replacement Parts	27
reFresh for Outside Air Options.....	28
Shipping Schedules.....	28
RF-reFresh Fans	29-30
TR Energy Recovery Ventilators	31
Shipping Schedules.....	31
TR Freight Policy	32
TR Series.....	33
TRC, TRCe, TRCV, & TRCVe Commercial Energy Recovery Ventilators.....	34
Shipping Schedules.....	34
TRC, TRCe, TRCV, & TRCVe Series Freight Policy.....	35
TRC & TRCe Series	36-38
Quickship Program Commercial Product Line.....	39
Shipping Schedules.....	39
Freight Chart	40
Cross Reference - Competitors' Models.....	41
LPD..... Low Profile Direct Drive Power Roof/Sidewall Exhauster.....	42
SDBD..... Downblast Direct Drive Power Roof Exhauster	42
SDB..... Downblast Belt Drive Power Roof Exhauster	43-44
STXD..... Upblast Direct Drive Power Roof Exhauster.....	45
STXB..... Upblast Belt Drive Power Roof Exhauster.....	46-47
CWD..... Sidewall Direct Drive Centrifugal Exhauster.....	48
KSFV..... Belt Drive Centrifugal Kitchen Supply Fan	49-50
SQB..... Square Inline Belt Drive Duct Fan	51-53
SQD..... Square Inline Direct Drive Duct Fan	54
ARE/ARS.... Dome Axial Direct Drive Roof Exhaust/Supply	55
GED..... Sidewall Exhaust Propeller Fan – Direct Drive.....	56
LCE..... Sidewall Exhaust Propeller Fan – Belt Drive	57-58
LCS..... Sidewall Supply Propeller Fan – Belt Drive	59-60
CM..... Belt Driven Utility Vent Set.....	61-65
RCXII..... Gravity/Non-Powered Intake or Relief Vent.....	66
AF/FF/FFC.. Bathroom Ceiling & Cabinet Fans	67-69

Table of Contents Cont.

Dampers, Shutters & Louvers	70
Shipping Schedules.....	70
Dampers & Shutters	
Model 411 - Auto Exhaust Damper	71
Model 611 - Auto Exhaust Damper	71
Model 502 - Automatic Wall Shutter.....	71
Model 556 - Automatic Wall Shutter.....	72
Model EAS-RF - Automatic Wall Shutter.....	72
Model EAS-HDGS - Automatic Wall Shutter	72
Model FGS - Automatic Wall Shutter	73
Model 304SS - Automatic Wall Shutter	73
Model EASB & EASW - Automatic Wall Shutter	73
Model AMD - Extruded Aluminum Motorized Damper	74
Model GMD - Galvanized Motorized Damper	74
Model ACD - Aluminum Motorized Hat Channel Damper	74
Louvers	
Model AFL - Aluminum Fixed Louver	75
Model GFL - Galvaneal Steel Fixed Louver	75
Model DFL - Extruded Aluminum Drainable Blade Fixed Louver.....	75
Model DFL-F - Extruded Aluminum Drainable Blade Fixed Louver with Flange.....	75
Model ACL - Extruded Aluminum Combination Louver/Damper	76
Model ACL-F - Extruded Aluminum Combination Louver/Damper with Flange	76
Model ADL - Aluminum Door Louver.....	76
Model SDL - Steel Door Louver	77
S&P Stock Product Freight & Multiplier Discount Schedule Cheat Sheet.....	78

Group A - Residential & Light Commercial Products

LIST PRICE BOOK

For use in conjunction with authorized Discount Multiplier Schedule.

ORDER PROCESSING AND SHIPPING SCHEDULES

The following policy applies to products shown on pages 7 thru 17 of this Price Book.

S&P has instituted the following shipping standards in order to better serve our customers. Using these standards you can estimate when your order will ship, however, the shipping schedules will vary based on the availability of stock. S&P's Customer Service team will notify you in a timely manner if there is a problem with a pending order.

- **Quantities per order are limited** – please check with S&P Customer Service for shipping schedules regarding orders of 20 or more units.
- Orders received on a business day before 12:00 PM Eastern will be processed the same day and will ship the next business day.
- Orders received on a business day after 12:00 PM Eastern will be processed the following business day and will ship the second business day following the day in which the order was placed.
- Lead times are subject to stock on hand as well as the approval of open credit, credit card information, or other method of payment having been established.

SHIPPING POINTS

May vary on occasion, but typically all items ship from Jacksonville, FL USA



Power Vent Series Inline Centrifugal Duct Fan

Part #	Description	List Price	Ship Weight (lbs.)	Pre-paid ship	Meets UPS Shipping	Warranty (yrs.)
PV-100	4" Inline centrifugal duct fan - 108 cfm	\$173.00 ●	10	A	Y	5
PV-100X	4" Inline centrifugal duct fan turbo - 153 cfm	\$190.00 ●	10	A	Y	5
PV-125	5" Inline centrifugal duct fan - 128 cfm	\$181.00 ●	10	A	Y	5
PV-125X	5" Inline centrifugal duct fan turbo - 206 cfm	\$193.00 ●	10	A	Y	5
PV-150	6" Inline centrifugal duct fan - 245 cfm	\$193.00 ●	13	A	Y	5
PV-150X	6" Inline centrifugal duct fan turbo - 438 cfm	\$239.00 ●	14	A	Y	5
PV-200	8" Inline centrifugal duct fan - 402 cfm	\$272.00 ●	16	A	Y	5
PV-200X	8" Inline centrifugal duct fan turbo - 544 cfm	\$333.00 ●	16	A	Y	5
PV-250	10" Inline centrifugal duct fan - 587 cfm	\$344.00 ●	16	A	Y	5
PV-250X	10" Inline centrifugal duct fan turbo - 618 cfm	\$381.00 ●	16	A	Y	5
PV-315	12.4" Inline centrifugal duct fan - 654 cfm	\$461.00 ●	20	A	Y	5
PV-315X	12.4" Inline centrifugal duct fan turbo - 942 cfm	\$519.00 ●	20	A	Y	5

All sizes available w/cord for additional charge.



PV Standard Exhaust Kits (Single Vent)

Kits Include: 1 fan and 1 plastic round intake grille

Part #	Description	List Price	Ship Weight (lbs.)	Pre-paid ship	Meets UPS Shipping	Warranty (yrs.)
KIT-PV100	Kit: PV100, PG-100 -108 cfm	\$189.00 ●	13	A	Y	8
KIT-PV100X	Kit: PV100X, PG-100 - 153 cfm	\$206.00 ●	13	A	Y	8
KIT-PV150	Kit: PV150, PG-150 - 245 cfm	\$213.00 ●	18	A	Y	8



PV Deluxe Exhaust Kits (Dual Vent)

Kits Include: 1 fan, 2 plastic round intake grilles, and 1 Y sheet metal adaper

Part #	Description	List Price	Ship Weight (lbs.)	Pre-paid ship	Meets UPS Shipping	Warranty (yrs.)
KIT-PV100X-DV	Kit: PV100X, 2 PG-100, SY-4, - 153 cfm	\$244.00 ●	14	A	Y	8
KIT-PV150-DV	Kit: PV150, 2 PG-150, SY-6 - 245 cfm	\$244.00 ●	21	A	Y	8
KIT-PV200-DV	Kit: PV200, 2 BOR-200, SY-8 - 402 cfm	\$368.00 ●	30	A	Y	8

Dryer Booster Kits



PV-100XPS



DBF-100xc

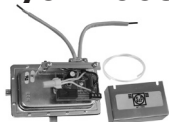


IL Kit

Kits Include: 1 fan with integrated pressure switch or 1 fan and either 1 pressure switch, 1 high current sensor, or 1 interlock

Part #	Description	List Price	Ship Weight (lbs.)	Pre-paid ship	Meets UPS Shipping	Warranty (yrs.)
PV-100XPS	Kit: PV-100X with Integrated Pressure Switch	\$262.00 ●	13	A	Y	5
DBF-100XC	Kit: PV-100X and High Current Sensor	\$268.00 ●	12	A	Y	5
IL-115	Kit: PV-100X and 115v interlock (gas)	\$442.00 ●	17	A	Y	5
IL-230	Kit: PV-100X and 230v interlock (electric)	\$442.00 ●	17	A	Y	5

Dryer Booster Kit Accessories and Switches



SPT-100x



CS-325

Switches

Part #	Description	List Price	Ship Weight (lbs.)	Pre-paid ship	Meets UPS Shipping	Warranty (yrs.)
SPT-100X	Pressure Switch with tubing and probe	\$94.00 ●	2	A	Y	5
CS-325	High Current Sensor	\$68.00 ●	1	A	Y	5



Lint Trap

Part #	Description	List Price	Ship Weight (lbs.)	Pre-paid ship	Meets UPS Shipping	Warranty (yrs.)
LT-100	Lint Trap	\$52.00 ●	1	A	Y	1

SWF-SIDEWALL Fans



SWF Series Centrifugal Sidewall Fans

Part #	Description	List Price	Ship Weight (lbs.)	Pre-paid ship	Meets UPS Shipping	Warranty (yrs.)
SWF-100	4" Sidewall centrifugal fan - 119 cfm	\$240.00 ●	11	A	Y	5
SWF-100X	4" Sidewall centrifugal fan turbo - 171 cfm	\$254.00 ●	11	A	Y	5
SWF-150	6" Sidewall centrifugal fan - 235 cfm	\$264.00 ●	12	A	Y	5
SWF150X	6" Sidewall centrifugal fan turbo - 354 cfm	\$352.00 ●	15	A	Y	5
SWF-200	8" Sidewall centrifugal fan - 416 cfm	\$401.00 ●	15	A	Y	5

PRF-Radon Mitigation Fans



PRF Series Radon Mitigation Fans

Part #	Description	List Price	Ship Weight (lbs.)	Pre-paid ship	Meets UPS Shipping	Warranty (yrs.)
PRF-100	4" Inline radon mitigation fan, fully sealed	\$168.00 ●	7	A	Y	5
PRF-150	6" Inline radon mitigation fan, fully sealed	\$190.00 ●	8	A	Y	5

Radon Mitigation Accessories



PRFIK Kits Include: (In-stock) 2 black flexible couplings with stainless steel hose clamps (4" x 3", 4" x 4", or 6" x 4"), U-tube Manometer, and radon system labels. (white flexible couplings available at an extended leadtime)

Part #	Description	Compat-ible with	List Price	Ship Weight (lbs.)	Pre-paid ship	Meets UPS Shipping	Warranty (yrs.)
PRFIK-43	PRF Installation Kit, 4x3 Couplings & Manometer	PRF-100	\$60.00 ●	3	A	Y	5
PRFIK-44	PRF Installation Kit, 4x4 Couplings & Manometer	PRF-100	\$60.00 ●	3	A	Y	5
PRFIK-64S	PRF Installation Kit, 6x4 (4.45" x 5.75") Couplings & Manometer	PRF-100	\$60.00 ●	3	A	Y	5
PRFIK-64L	PRF Installation Kit, 6x4 (6.45" x 4.45") Coupling & Manometer	PRF-150	\$60.00 ●	3	A	Y	5
PR-M	PRF U-tube Manometer & Label Kit	Both	\$24.00 ●	3	A	Y	5
PF-BRKT	Metal mounting bracket for PRF fan	Both	\$4.00 ●	2	A	Y	5

TD-MIXVENT & SILENT Fans



TD Series Inline Mixed Flow Duct Fan

Part #	Description	List Price	Ship Weight (lbs.)	Pre-paid ship	Meets UPS Shipping	Warranty (yrs.)
TD-100	4" Inline mixed flow duct fan - 101 cfm	\$112.00 ●	3	A	Y	5
TD-100X1	4" Inline mixed flow duct fan turbo - 135 cfm	\$132.00 ●	5	A	Y	5
TD-125	5" Inline mixed flow duct fan - 197 cfm	\$150.00 ●	6	A	Y	5
TD-150	6" Inline mixed flow duct fan - 293 cfm	\$195.00 ●	7	A	Y	5
TD-200	8" Inline mixed flow duct fan - 538 cfm	\$248.00 ●	10	A	Y	5
TD-250	10" Inline mixed flow duct fan - LS: 541 cfm; HS: 754 cfm	\$452.00 ●	21	A	Y	5
TD-315	12.4" Inline mixed flow duct fan - LS: 751 cfm; HS: 1050 cfm	\$536.00 ●	31	A	Y	5
TD-355	14" Inline mixed flow duct fan - 2090 cfm	\$910.00 ●	43	B	N	5
TD-400	16" Inline mixed flow duct fan - 3127 cfm	\$1,482.00 ●	78	B	N	5

TD Series - Bulk Pricing

Fans come on pallets, without packaging or installation instructions. Minimum order quantities apply. \$10/list pallet break fee will be added for quantities that do not equal full pallet quantity. Contact factory for leadtimes, subject to availability.

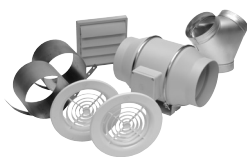
Part #	Description	Min. Order Qty	List Price (per fan)	Pre-paid ship	Meets UPS Shipping	Warranty (yrs.)
5211370900	TD-100 Bulk - 60 fans per pallet	60 fans	\$99.00	A	N	5
5211372100	TD-100X1 Bulk - 40 fans per pallet	40 fans	\$119.00	A	N	5
5211371100	TD-125 Bulk - 40 fans per pallet	40 fans	\$141.00	A	N	5
5211371200	TD-150 Bulk - 32 fans per pallet	32 fans	\$193.00	A	N	5
5211371300	TD-200 Bulk - 24 fans per pallet	24 fans	\$242.00	A	N	5



TD Standard Exhaust Kits (Single Vent)

Kits Include: 1 fan, 1 plastic round intake grille, 1 louvered exterior grille.

Part #	Description	List Price	Ship Weight (lbs.)	Pre-paid ship	Meets UPS Shipping	Warranty (yrs.)
KIT-TD100	Kit: TD100, PG-100, PER-100W	\$141.00 ●	5	A	Y	7
KIT-TD100X1	Kit: TD100X1, PG-100, PER-100W	\$162.00 ●	9	A	Y	7
KIT-TD150	Kit: TD150, PG-150, PER-150W	\$236.00 ●	10	A	Y	7



TD Deluxe Exhaust Kits (Dual Vent)

Kit Includes: 1 fan, 2 plastic round intake grilles, 1 louvered exterior grille, 1 Y sheet metal adapter.

Part #	Description	List Price	Ship Weight (lbs.)	Pre-paid ship	Meets UPS Shipping	Warranty (yrs.)
KIT-TD150-DV	Kit: TD150, 2 PG-150, PER-150W, SY-6	\$279.00 ●	14	A	Y	7



TD Standard Lighted Exhaust Kits (Single Vent)

Kits Include: 1 TD-100X1 fan and 1 Vent Light (3 bulb options)

Part #	Description	List Price	Ship Weight (lbs.)	Pre-paid ship	Meets UPS Shipping	Warranty (yrs.)
KIT-TD100X1L	Kit: TD100X1 and VLED-100 (LED Bulb)	\$267.00 ●	12	A	Y	7
KIT-TD100X1H	Kit: TD100X1 and VLH-100 (Halogen Bulb)	\$237.00 ●	12	A	Y	7
KIT-TD100X1F	Kit: TD100X1 and VLF-100 (Fluorescent Bulb)	\$237.00 ●	12	A	Y	7

Light bulb is not included in 7 year warranty.



TD Deluxe Lighted Exhaust Kits (Dual Vent)

Kit Includes: 1 TD-150 fan, 2 Vent Lights (3 bulb options), Y sheet metal adapter

Part #	Description	List Price	Ship Weight (lbs.)	Pre-paid ship	Meets UPS Shipping	Warranty (yrs.)
KIT-TD150L	Kit: TD150, VLED-100 (LED Bulb), SY44-6	\$491.00 ●	14	A	Y	7
KIT-TD150H	Kit: TD150, VLH-100 (Halogen Bulb), SY44-6	\$428.00 ●	14	A	Y	7
KIT-TD150F	Kit: TD150, VLF-100 (Fluorescent Bulb), SY44-6	\$428.00 ●	14	A	Y	7

Light bulb is not included in 7 year warranty.



Outside Air Kit Featuring TD-125 IECC 2015 Compliant

Kit Includes: 1 TD-125, 1 CAR-125, 1 FT247

Part #	Description	List Price	Ship Weight (lbs.)	Pre-paid ship	Meets UPS Shipping	Warranty (yrs.)
OSAK-125	Outside Air Kit - IECC 2015 Compliant	\$223.00 ●	10	A	Y	5



TD-Silent Series Extremely Quiet Inline Mixed Flow Duct Fan

Part #	Description	List Price	Ship Weight (lbs.)	Pre-paid ship	Meets UPS Shipping	Warranty (yrs.)
TD-125XS	5" Inline mixed flow duct fan - 203 cfm	\$261.00 ●	12	A	Y	5
TD-150S	6" Inline mixed flow duct fan - 333 cfm	\$305.00 ●	13	A	Y	5
TD-200S	8" Inline mixed flow duct fan - 530 cfm	\$381.00 ●	19	A	Y	5



TD-125XS 5 to 4" Duct Reducers (Qty 2)

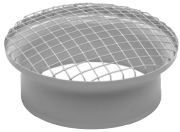
Part #	Description	List Price	Ship Weight (lbs.)	Pre-paid ship	Meets UPS Shipping	Warranty (yrs.)
SR5-4	5 to 4" TD-Silent plastic duct reducers (Qty 2)	\$15.00 ●	2	A	Y	5

TD Accessories



TD Circular Fan/Duct Connectors

Part #	Description	List Price	Ship Weight (lbs.)	Pre-paid ship	Meets UPS Shipping	Warranty (yrs.)
MBR-125	5" TD circular fan duct connector	\$34.00 ●	1	A	Y	1
MBR-150	6" TD circular fan duct connector	\$39.00 ●	1	A	Y	1
MBR-200	8" TD circular fan duct connector	\$48.00 ●	1	A	Y	1
MBR-250	10" TD circular fan duct connector	\$59.00 ●	1	A	Y	1
MBR-315	12.4" TD circular fan duct connector	\$66.00 ●	1	A	Y	1



MRJ Mesh Type Grilles TD

Part #	Description	List Price	Ship Weight (lbs.)	Pre-paid ship	Meets UPS Shipping	Warranty (yrs.)
MRJ100	4" TD plastic mesh grille	\$46.00 ●	1	A	Y	1
MRJ125	5" TD plastic mesh grille	\$48.00 ●	1	A	Y	1
MRJ150	6" TD plastic mesh grille	\$53.00 ●	1	A	Y	1
MRJ200	8" TD plastic mesh grille	\$59.00 ●	1	A	Y	1
MRJ250	10" TD plastic mesh grille	\$61.00 ●	1	A	Y	1



TD Twin Direct Connection Backdraft Shutters

Part #	Description	List Price	Ship Weight (lbs.)	Pre-paid ship	Meets UPS Shipping	Warranty (yrs.)
MCA-100	4" TD direct connection inline backdraft damper	\$50.00 ●	1	A	Y	1
MCA-125	5" TD direct connection inline backdraft damper	\$57.00 ●	1	A	Y	1
MCA-150	6" TD direct connection inline backdraft damper	\$59.00 ●	1	A	Y	1
MCA-200	8" TD direct connection inline backdraft damper	\$92.00 ●	1	A	Y	1
MCA-250	10" TD direct connection inline backdraft damper	\$123.00 ●	1	A	Y	1
MCA-315	12.4" TD direct connection inline backdraft damper	\$144.00 ●	1	A	Y	1

WA & DA Compact Axial Fans



Low Silhouette Wall Axial Fans (Aerofoil Blade)

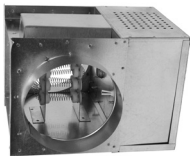
Part #	Description	List Price	Ship Weight (lbs.)	Pre-paid ship	Meets UPS Shipping	Warranty (yrs.)
WA12	12" Wall direct drive axial - 1260 cfm	\$392.00 ●	16	A	Y	5
WA16	16" Wall direct drive axial - 2430 cfm	\$464.00 ●	24	A	Y	5
WA18	18" Wall direct drive axial - 3690 cfm	\$516.00 ●	35	A	Y	5
WA20	20" Wall direct drive axial - 4520 cfm	\$570.00 ●	42	A	Y	5



Low Silhouette Tubular Duct Axial Fans (Aerofoil Blade)

Part #	Description	List Price	Ship Weight (lbs.)	Pre-paid ship	Meets UPS Shipping	Warranty (yrs.)
DA12	12" Tubular duct direct drive axial - 1216 cfm	\$475.00 ●	21	A	Y	5
DA16	16" Tubular duct direct drive axial - 2540 cfm	\$531.00 ●	28	A	Y	5
DA18	18" Tubular duct direct drive axial - 3620 cfm	\$570.00 ●	37	A	Y	5
DA20	20" Tubular duct direct drive axial - 4750 cfm	\$613.00 ●	41	A	Y	5

General Accessories



Inline Duct Heater

Part #	Description	List Price	Ship Weight (lbs.)	Pre-paid ship	Meets UPS Shipping	Warranty (yrs.)
DH6-120V	Inline duct heater for 6" round duct, 120V	\$561.00 ●	9	A	Y	1



VL Vent Light

Part #	Description	List Price	Ship Weight (lbs.)	Pre-paid ship	Meets UPS Shipping	Warranty (yrs.)
VLED-100	Vent Light with PAR30 LED Bulb	\$136.00 ●	5	A	Y	1
VLH-100	Vent Light with PAR30 Halogen Bulb	\$106.00 ●	5	A	Y	1
VLF-100	Vent Light with Energy Star Rated Compact Fluorescent Bulb	\$106.00 ●	5	A	Y	1



PG Intake Grille with steel collar

Part #	Description	List Price	Ship Weight (lbs.)	Pre-paid ship	Meets UPS Shipping	Warranty (yrs.)
PG-100	4" intake grille with steel collar	\$17.00 ●	1	A	Y	1
PG-150	6" intake grille with steel collar	\$21.00 ●	1	A	Y	1



BOC *Metal* Adjustable Round Grilles

Part #	Description	List Price	Ship Weight (lbs.)	Pre-paid ship	Meets UPS Shipping	Warranty (yrs.)
BOC100	4" Metal interior adjustable round grille	\$30.00 ●	1	A	Y	1
BOC125	5" Metal interior adjustable round grille	\$33.00 ●	1	A	Y	1
BOC150	6" Metal interior adjustable round grille	\$43.00 ●	1	A	Y	1
BOC200	8" Metal interior adjustable round grille	\$57.00 ●	1	A	Y	1



BOR *Plastic* Adjustable Round Grilles

Part #	Description	List Price	Ship Weight (lbs.)	Pre-paid ship	Meets UPS Shipping	Warranty (yrs.)
BOR-100	4" Plastic interior adjustable round grille	\$25.00 ●	1	A	Y	1
BOR-125	5" Plastic interior adjustable round grille	\$27.00 ●	1	A	Y	1
BOR-150	6" Plastic interior adjustable round grille	\$30.00 ●	1	A	Y	1
BOR-200	8" Plastic interior adjustable round grille	\$35.00 ●	1	A	Y	1



GRA Aluminum Exterior Fixed Grilles

Part #	Description	List Price	Ship Weight (lbs.)	Pre-paid ship	Meets UPS Shipping	Warranty (yrs.)
GRA-100	4" Aluminum exterior fixed grille	\$14.00 ●	1	A	Y	1
GRA-125	5" Aluminum exterior fixed grille	\$17.00 ●	1	A	Y	1
GRA-150	6" Aluminum exterior fixed grille	\$20.00 ●	1	A	Y	1
GRA-200	8" Aluminum exterior fixed grille	\$25.00 ●	1	A	Y	1



PER-W Plastic Louvered Shutters

Part #	Description	List Price	Ship Weight (lbs.)	Pre-paid ship	Meets UPS Shipping	Warranty (yrs.)
PER-100W	4" Plastic louver shutter	\$14.00 ●	1	A	Y	1
PER-150W	6" Plastic louver shutter	\$22.00 ●	1	A	Y	1
PER-200W	8" Plastic louver shutter	\$62.00 ●	1	A	Y	1
PER-250W	10" Plastic louver shutter	\$66.00 ●	1	A	Y	1
PER-355W	14" Plastic louver shutter	\$83.00 ●	2	A	Y	1
PER-450W	18" Plastic louver shutter	\$104.00 ●	3	A	Y	1
PER-500W	20" Plastic louver shutter	\$128.00 ●	3	A	Y	1



CAR Backdraft Dampers

Part #	Description	List Price	Ship Weight (lbs.)	Pre-paid ship	Meets UPS Shipping	Warranty (yrs.)
CAR100	4" Steel backdraft damper - spring-loaded	\$5.00 ●	1	A	Y	1
CAR125	5" Steel backdraft damper - spring-loaded	\$6.00 ●	1	A	Y	1
CAR150	6" Steel backdraft damper - spring-loaded	\$7.00 ●	1	A	Y	1
CAR200	8" Steel backdraft damper - spring-loaded	\$9.00 ●	1	A	Y	1
CAR250	10" Steel backdraft damper - spring-loaded	\$13.00 ●	1	A	Y	1
CAR315	12.4" Steel backdraft damper - spring-loaded	\$17.00 ●	2	A	Y	1
CAR355	14" Steel backdraft damper - spring-loaded	\$24.00 ●	5	A	Y	1
CAR400	16" Steel backdraft damper - spring-loaded	\$29.00 ●	5	A	Y	1



Motorized Backdraft Damper

Part #	Description	List Price	Ship Weight (lbs.)	Pre-paid ship	Meets UPS Shipping	Warranty (yrs.)
MD6	Motorized backdraft damper for 6" round duct	\$65.00 ●	9	A	Y	1



In-line Duct Silencers

Part #	Description	List Price	Ship Weight (lbs.)	Pre-paid ship	Meets UPS Shipping	Warranty (yrs.)
SIL-200	8" In-line duct silencer	\$223.00 ●	21	A	Y	1
SIL-250	10" In-line duct silencer	\$256.00 ●	32	A	Y	1
SIL-315	12.4" In-line duct silencer	\$362.00 ●	32	A	Y	1



FB Filter Boxes with MERV8 Filters

Part #	Description	List Price	Ship Weight (lbs.)	Pre-paid ship	Meets UPS Shipping	Warranty (yrs.)
FB4	Filter Box for 4" Duct with MERV8 Filter	\$75.00 ●	4	A	Y	1
FB5	Filter Box for 5" Duct with MERV8 Filter	\$76.00 ●	4	A	Y	1
FB6	Filter Box for 6" Duct with MERV8 Filter	\$77.00 ●	4	A	Y	1

Ship Schedules:

- Next Day Shipment From Stock
- ▲ 3 Day Shipment From Stock
- ◆ 10 Day Shipment



MFL Filter Boxes

Part #	Description	List Price	Ship Weight (lbs.)	Pre-paid ship	Meets UPS Shipping	Warranty (yrs.)
MFL-200	8" Filtration box	\$175.00 ●	5	A	Y	1
MFL-250	10" Filtration box	\$245.00 ●	6	A	Y	1
MFL-315	12.4" Filtration box	\$272.00 ●	7	A	Y	1



ACOP Vent Mounting Clamps

Part #	Description	List Price	Ship Weight (lbs.)	Pre-paid ship	Meets UPS Shipping	Warranty (yrs.)
ACOP-V100	4" Connector clamps (2 ea., sold in pairs)	\$37.00 ●	1	A	Y	1
ACOP-V125	5" Connector clamps (2 ea., sold in pairs)	\$46.00 ●	1	A	Y	1
ACOP-V150	6" Connector clamps (2 ea., sold in pairs)	\$51.00 ●	1	A	Y	1
ACOP-V200	8" Connector clamps (2 ea., sold in pairs)	\$57.00 ●	1	A	Y	1
ACOP-V250	10" Connector clamps (2 ea., sold in pairs)	\$59.00 ●	1	A	Y	1
ACOP-V315	12.4" Connector clamps (2 ea., sold in pairs)	\$68.00 ●	1	A	Y	1



Y Sheet Metal Adapter

Part #	Description	List Price	Ship Weight (lbs.)	Pre-paid ship	Meets UPS Shipping	Warranty (yrs.)
SY-4	4" Y sheet metal adapter	\$21.00 ●	1	A	Y	1
SY-6	6" Y sheet metal adapter	\$23.00 ●	1	A	Y	1
SY-8	8" Y sheet metal adapter	\$27.00 ●	2	A	Y	1
SY66-8	6x6x8 Y sheet metal adapter	\$28.00 ●	1	A	Y	1
SY88-10	8x8x10 Y sheet metal adapter	\$32.00 ●	1	A	Y	1



Increaser/Reducer

Part #	Description	List Price	Ship Weight (lbs.)	Pre-paid ship	Meets UPS Shipping	Warranty (yrs.)
SR10-8	10-8 Increaser/Reducer	\$19.00 ●	1	A	Y	1
SR8-6	8-6 Increaser/Reducer	\$16.00 ●	1	A	Y	1
SR6-4	6-4 Increaser/Reducer	\$16.00 ●	2	A	Y	1
SR5-4M	5-4 Increaser/Reducer	\$15.00 ●	2	A	Y	1
SR315-12	315mm to 12" Increaser/Reducer	\$23.00 ●	1	A	Y	1



Roof Cap with Integral Backdraft Damper

Part #	Description	List Price	Ship Weight (lbs.)	Pre-paid ship	Meets UPS Shipping	Warranty (yrs.)
RC-4	4" Roof cap	\$43.00 ●	2	A	Y	1
RC-6	6" Roof cap	\$64.00 ●	3	A	Y	1
RC-8	8" Roof cap	\$66.00 ●	5	A	Y	1
RC-10	10" Roof cap	\$66.00 ●	5	A	Y	1



Duct Connector

Part #	Description	List Price	Ship Weight (lbs.)	Pre-paid ship	Meets UPS Shipping	Warranty (yrs.)
DC-4	4" Duct Connector	\$8.00 ●	1	A	Y	1
DC-6	6" Duct Connector	\$8.00 ●	1	A	Y	1
DC-8	8" Duct Connector	\$10.00 ●	1	A	Y	1



Worm Clamp

Part #	Description	List Price	Ship Weight (lbs.)	Pre-paid ship	Meets UPS Shipping	Warranty (yrs.)
WC-4	4" Worm Clamp	\$5.00 ●	1	A	Y	1
WC-6	6" Worm Clamp	\$6.00 ●	1	A	Y	1
WC-8	8" Worm Clamp	\$7.00 ●	1	A	Y	1

Ship Schedules:

● Next Day Shipment From Stock

▲ 3 Day Shipment From Stock

◆ 10 Day Shipment

Electronic Accessories



SCS



EPBT



SCR



SRT

Part #	Description	List Price	Ship Weight (lbs.)	Pre-paid ship	Meets UPS Shipping	Warranty (yrs.)
SCS5	Speed control slide type (5 Amp)	\$81.00 ●	1	A	Y	1
EPBT-60	Electronic push button timer (10-20-30-60 min)	\$72.00 ●	1	A	Y	1
2525.5UL	Speed control (rotary type) (5 Amp)	\$29.00 ●	1	A	Y	1
SCR-10*	Speed control (rotary type) HD (10 Amp)	\$78.00 ●	1	A	Y	1
SCR-15*	Speed control (rotary type) HD (15 Amp)	\$102.00 ●	1	A	Y	1
SCR-210	Speed control (rotary type) HD (10 Amp/230V)	\$85.00 ●	1	A	Y	1
FLTD-60	Fan/light delay timer switch	\$116.00 ●	1	A	Y	1
SRT-30	Rotary spring wound timer	\$49.00 ●	1	A	Y	1

*Heavy Duty



Wall Mounted Dehumidistat

Part #	Description	List Price	Ship Weight (lbs.)	Pre-paid ship	Meets UPS Shipping	Warranty (yrs.)
SHW-20	Wall mounted dehumidistat	\$41.00 ●	1	A	Y	1



ASHRAE 62.2 Switches

Part #	Description	List Price	Ship Weight (lbs.)	Pre-paid ship	Meets UPS Shipping	Warranty (yrs.)
FT622	ASHRAE 62.2 Bath Fan Ventilation Controller	\$133.00 ●	1	A	Y	1
FT247	Programmable Fan Timer, 24/7 Day	\$68.00 ●	1	A	Y	1



Outside Air Control Options

Part #	Description	List Price	Ship Weight (lbs.)	Pre-paid ship	Meets UPS Shipping	Warranty (yrs.)
ES24V	Envirosense Ventilation Control, 24V	\$79.00 ●	1	A	Y	5

Ship Schedules:

●	Next Day Shipment From Stock
▲	3 Day Shipment From Stock
◆	10 Day Shipment

PC - Premium Choice Fans

LIST PRICE BOOK

For use in conjunction with authorized Discount Multiplier Schedule.

ORDER PROCESSING AND SHIPPING SCHEDULES

The following policy applies to products shown on pages 19 thru 27 of this Price Book.

S&P has instituted the following shipping standards in order to better serve our customers. Using these standards you can estimate when your order will ship, however, the shipping schedules will vary based on the availability of stock. S&P's Customer Service team will notify you in a timely manner if there is a problem with a pending order.

- **Quantities per order are limited** – please check with S&P Customer Service for shipping schedules regarding orders of 20 or more units.
- Orders received on a business day before 12:00 PM Eastern will be processed the same day and will ship the next business day.
- Orders received on a business day after 12:00 PM Eastern will be processed the following business day and will ship the second business day following the day in which the order was placed.
- Lead times are subject to stock on hand as well as the approval of open credit, credit card information, or other method of payment having been established.

SHIPPING POINTS

May vary on occasion, but typically all items ship from Jacksonville, FL USA

PC - Premium CHOICE Fans - Standard AC Models



PC - Premium Choice Fans Ceiling Mounted Bath Fans

Part #	Description	List Price	Ship Weight (lbs.)	Pre-paid ship	Meets UPS Shipping	Warranty (yrs.)
PC50X	4" Premium Choice Ceiling Mounted Fan - 50 cfm	\$97.00 ●	7	A	Y	5
PC80X	4 or 6" Premium Choice Ceiling Mounted Fan - 80 cfm	\$137.00 ●	10	A	Y	5
PC110X	4 or 6" Premium Choice Ceiling Mounted Fan - 110 cfm	\$147.00 ●	11	A	Y	5
PC150	6" Premium Choice Ceiling Mounted Fan - 150 cfm	\$187.00 ●	11	A	Y	5



Control Options

Part #	Description	List Price	Ship Weight (lbs.)	Pre-paid ship	Meets UPS Shipping	Warranty (yrs.)
PCSC	PC Speed Control	\$50.00 ●	1	A	Y	5
PCHS	PC Humidity Sensor	\$50.00 ●	1	A	Y	5
PCIAQS	PC VOC & Humidity Sensor with timer and speed control	\$99.00 ●	1	A	Y	5
PCBTS	PC Bluetooth Speaker	\$50.00 ●	1	A	Y	5
PC3S	3 Switch Control for PC Fan Options	\$23.00 ●	1	A	Y	1



Grille Options

- **PCLK Kit Includes:** 1 light grille, 13 watt GU24 fluorescent bulb and 4 watt night light
- **PCLEDK Kit Includes:** 1 light grille with LED panel
- **PCMK Kit Includes:** 1 grille with built-in motion sensor and a speed control
- **PCLMK Kit Includes:** 1 light grille (13 watt GU24 fluorescent bulb and 4 watt night light) with built-in motion sensor and a speed control
- **PCMHK Kit Includes:** 1 grille with built-in motion sensor, humidity sensor, and a speed control
- **PCLMHK Kit Includes:** 1 light grille (13 watt GU24 fluorescent bulb and 4 watt night light) with built-in motion sensor, humidity sensor, and a speed control

Part #	Description	List Price	Ship Weight (lbs.)	Pre-paid ship	Meets UPS Shipping	Warranty (yrs.)
PCLK	PC Light Kit	\$64.00 ●	3	A	Y	5
PCLEDK	PC Light Kit with LED Light	\$89.00 ●	3	A	Y	5
PCMK	PC Motion Sensor Kit	\$99.00 ●	3	A	Y	5
PCLMK	PC Lighted Motion Sensor Kit	\$137.00 ●	3	A	Y	5
PCMHK	PC Motion & Humidity Sensing Kit	\$100.00 ●	4	A	Y	5
PCLMHK	PC Lighted Motion & Humidity Sensing Kit	\$138.00 ●	3	A	Y	5
PCMG	PC Metal Grille	\$33.00 ●	2	A	Y	5

PC - Premium CHOICE Fans - Standard AC Models cont...



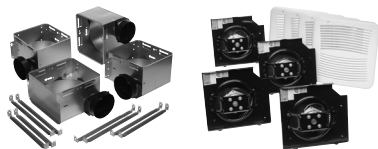
Radiation Dampers & Kits

Part #	Description	List Price	Ship Weight (lbs.)	Pre-paid ship	Meets UPS Shipping	Warranty (yrs.)
PCRD	PC Fan Radiation Damper	\$76.00 ●	6	A	Y	5
PCRD-P2***	Tall PC Fan Radiation Damper for use with Lighted Grille Kits or Motion Sensing Grille Kits	\$76.00 ●	6	A	Y	5
PCMKRD*	PC Radiation Damper Kit with PCMK	\$175.00 ●	6	A	Y	5
PCMHKRD*	PC Radiation Damper Kit with PCMHK	\$176.00 ●	7	A	Y	5
PCLKRD**	PC Radiation Damper Kit with PCLK	\$140.00 ●	6	A	Y	5
PCLEDKRD**	PC Radiation Damper Kit with PCLEDK	\$165.00 ●	6	A	Y	5
PCLMKRD**	PC Radiation Damper Kit with PCLMK	\$213.00 ●	6	A	Y	5
PCLMHKRD**	PC Radiation Damper Kit with PCLMHK	\$214.00 ●	7	A	Y	5
PCMGKRD*	Radiation Damper Kit with PCMG	\$109.00 ●	8	A	Y	5

*Kits Include PCRD Radiation Damper and Grille

**Kits Include PCRD-P2 Radiation Damper, Wiring Extender, and Grille

*** Sold with Lighted or Motion Sensing Radiation Damper Kits. When ordered separately you must order wiring extenders RDEXTLK-\$6/list (for lighted kits) or RDEXTDCMK-\$6/List (for motion sensing kits). Additionally the PCMHK and PCLMHK require both types of wiring extenders.



Contractor Packs

PCH Pack includes: 4 Housings (order first)

"F" Pack includes: 4 Motors & Grilles (order second)

Part #	Description	List Price	Ship Weight (lbs.)	Pre-paid ship	Meets UPS Shipping	Warranty (yrs.)
PCH	PC80X or 110X Contractor 4-pk Housing	\$188.00 ●	22	A	Y	5
PC80F	PC80X Contractor 4-pk - Motor & Grille	\$325.00 ●	19	A	Y	5
PC110F	PC110X Contractor 4-pk - Motor & Grille	\$366.00 ●	19	A	Y	5

PC Standard AC Fan & Accessory Compatibility

The chart below indicate which plug-&-play or other PC accessories are compatible with each PC Standard AC Models.

Option	PC Standard AC Model			
	PC50X	PC80X	PC110X	PC150
PCLK	-	✓	✓	✓
PCLEDK	-	✓	✓	✓
PCLMK	-	✓	✓	✓
PCMK	-	✓	✓	✓
PCMHK	-	✓	✓	✓
PCLMHK	-	✓	✓	✓
PCHS	✓	✓	✓	✓
PCSC	✓	✓	✓	✓
PCIAQS	-	✓	✓	✓
PCBTS	-	✓	✓	✓
PC3S	✓	✓	✓	✓
PCRD	-	✓	✓	✓
PCMKRD	-	✓	✓	✓
PCLMKRD	-	✓	✓	✓
PCMHKRD	-	✓	✓	✓
PCLMHKRD	-	✓	✓	✓
PCLKRD	-	✓	✓	✓
PCLEDKRD	-	✓	✓	✓
PCMG	-	✓	✓	✓
PCMGKRD	-	✓	✓	✓

The chart below indicates which plug-&-play or other PC accessories can be used together.

	Std. Grille	PCLK	PCLEDK	PCMK	PCLMK	PCMHK	PCLMHK	PCHS	PCSC	PCIAQS	PCBTS	PC3S	PCRD	PC-MKRD	PCLM-KRD	PCMH-KRD	PCLMH-KRD	PCLKRD	PCLM-KRD	PCMG	PCMG-KRD
Std. Grille	-	-	-	-	-	-	-	✓	✓	✓		✓	✓	-	-	-	-	-	-	-	-
PCLK	-	-	-	-	-	-	-	✓	✓	✓		✓	-	-	-	-	-	Included	-	-	-
PCLEDK	-	-	-	-	-	-	-	✓	✓	✓		✓	-	-	-	-	-	-	Included	-	-
PCMK	-	-	-	-	-	-	-	-	-	-	-	✓	-	Included	-	-	-	-	-	-	-
PCLMK	-	-	-	-	-	-	-	-	-	-	-	✓	-	-	Included	-	-	-	-	-	-
PCMHK	-	-	-	-	-	-	-	-	-	-	-	✓	-	-	-	Included	-	-	-	-	-
PCLMHK	-	-	-	-	-	-	-	-	-	-	-	✓	-	-	-	-	Included	-	-	-	-
PCHS	✓	✓	✓	-	-	-	-	-	-	-	-	✓	✓	-	-	-	-	✓	✓	✓	✓
PCSC	✓	✓	✓	-	-	-	-	-	-	-	-	✓	✓	-	-	-	-	✓	✓	✓	✓
PCIAQS	✓	✓	✓	-	-	-	-	-	-	-	-	✓	✓	-	-	-	-	✓	✓	✓	✓
PCBTS	✓	✓	✓	-	-	-	-	-	-	-	-	✓	✓	-	-	-	-	✓	✓	✓	✓
PC3S	✓	✓	✓	✓	✓	✓	✓	✓	✓	✓	✓	-	✓	✓	✓			✓	✓	✓	✓
PCRD	✓	-	-	-	-	-	-	✓	✓	✓	✓	✓	-	Included	Included	Included	Included	Included	Included	✓	Included
PCMKRD	-	-	-	Included	-	-	-	-	-	-	-	✓	Included	-	-	-	-	-	-	-	-
PCLMKRD	-	-	-	-	Included	-	-	-	-	-	-	✓	Included	-	-	-	-	-	-	-	-
PCMHKRD	-	-	-	-	-	Included	-	-	-	-	-	✓	Included	-	-	-	-	-	-	-	-
PCLMHKRD	-	-	-	-	-	-	Included	-	-	-	-	✓	Included	-	-	-	-	-	-	-	-
PCLKRD	-	Included	-	-	-	-	-	✓	✓	✓	✓	✓	Included	-	-	-	-	-	-	-	-
PCLEDKRD	-	-	Included	-	-	-	-	✓	✓	✓	✓	✓	Included	-	-	-	-	-	-	-	-
PCMG	-	-	-	-	-	-	-	✓	✓	✓	✓	✓	✓	-	-	-	-	-	-	-	Included
PCMGKRD	-	-	-	-	-	-	-	✓	✓	✓	✓	✓	Included	-	-	-	-	-	-	Included	-

NOTE: All accessories shown are PC exclusive accessories, the PC models are compatible with General RLC Accessories shown in this price book.

PCV - Premium CHOICE Value Fans



PC - Premium Choice Value Fans Ceiling Mounted Bath Fans

Part #	Description	List Price	Ship Weight (lbs.)	Pre-paid ship	Meets UPS Shipping	Warranty (yrs.)
PCV50	4" Premium Choice Value Ceiling Mounted Fan - 50 cfm	\$50.00 ●	7	A	Y	5
PCV80	4" Premium Choice Value Ceiling Mounted Fan - 80 cfm	\$78.00 ●	7	A	Y	5

Contractor Packs

“H” Pack includes: 4 Housings (order first)

“F” Pack includes: 4 Motors & Grilles (order second)

Part #	Description	List Price	Ship Weight (lbs.)	Pre-paid ship	Meets UPS Shipping	Warranty (yrs.)
PCV50H	PCV50 Contractor 4-pk Housing	\$76.00 ●	17	A	Y	5
PCV50F	PCV50 Contractor 4-pk - Motor & Grille	\$92.00 ●	11	A	Y	5
PCV80H	PCV80 Contractor 4-pk Housing	\$96.00 ●	17	A	Y	5
PCV80F	PCV80 Contractor 4-pk - Motor & Grille	\$184.00 ●	11	A	Y	5



Control Options

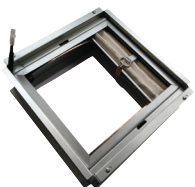
Part #	Description	List Price	Ship Weight (lbs.)	Pre-paid ship	Meets UPS Shipping	Warranty (yrs.)
PCSC	PC Speed Control	\$50.00 ●	1	A	Y	5
PCHS	PC Humidity Sensor	\$50.00 ●	1	A	Y	5
PC3S	3 Switch Control for PC Fan Options	\$23.00 ●	1	A	Y	1

Grille Options



- PCVLEDK Kit Includes: 1 light grille with LED Lights
- PCVLK Kit Includes: 1 light grille with CFL Bulb

Part #	Description	List Price	Ship Weight (lbs.)	Pre-paid ship	Meets UPS Shipping	Warranty (yrs.)
PCVLEDK	PC Value Fan LED Light Kit	\$85.00 ●	3	A	Y	5
PCVLK	PC Value Fan CFL Light Kit	\$40.00 ●	3	A	Y	5



Radiation Damper & Kits

Part #	Description	List Price	Ship Weight (lbs.)	Pre-paid ship	Meets UPS Shipping	Warranty (yrs.)
PCVRD	PC Value Fan Radiation Damper	\$63.00 ●	3	A	Y	5
PCVLEDKRD*	PC Radiation Damper Kit with PCVLEDK	\$152.00 ●	6	A	Y	5

*Kits Include Radiation Damper, Wiring Extender, and Grille

PC Value Fan & Accessory Compatibility

The chart below indicate which plug-&-play or other PC accessories are compatible with each PC Value Models.

Option	PC Standard AC Model	
	PCV50	PCV80
PCVLEDK	✓	✓
PCHS	✓	✓
PCSC	-	✓
PC3S	✓	✓
PCVRD	✓	✓

The chart below indicates which plug-&-play or other PC accessories can be used together.

	Std. Grille	PCVLEDK	PCHS	PCSC	PC3S	PCVRD
Std. Grille	-	-	✓	✓	✓	✓
PCVLEDK	-	-	✓	✓	✓	✓
PCHS	✓	✓	-	-	✓	✓
PCSC	✓	✓	-	-	✓	✓
PC3S	✓	✓	✓	✓	-	✓
PCVRD	✓	✓	✓	✓	✓	-

NOTE: All accessories shown are PC exclusive accessories, the PC models are compatible with General RLC Accessories shown in this price book.

PCD - Premium CHOICE Fans - DC Models



PCD - Premium Choice - with DC Motors

Ceiling Mounted Bath Fans

Part #	Description	List Price	Ship Weight (lbs.)	Pre-paid ship	Meets UPS Shipping	Warranty (yrs.)
PCD110X	6" PC Ceiling Mounted Fan with DC Motor - 80-140 cfm	\$155.00 ●	11	A	Y	6
PCD110XH	6" PC Ceiling Mounted Fan with DC Motor - 80-140 cfm with built-in humidity sensor	\$204.00 ●	11	A	Y	6
PCD110XM	6" PC Ceiling Mounted Fan with DC Motor - 80-140 cfm with built-in motion sensor	\$204.00 ●	11	A	Y	6
PCD110XMH	6" PC Ceiling Mounted Fan with DC Motor - 80-140 cfm with built-in motion sensor and humidity sensor	\$220.00 ●	11	A	Y	6
PCD110XIAQS	6" PC Ceiling Mounted Fan with DC Motor - 80-140 cfm with built-in VOC and humidity sensor	\$230.00 ●	11	A	Y	6
PCD200	6" PC Ceiling Mounted Fan with DC Motor - 200 cfm	\$180.00 ●	11	A	Y	6



Control Options

Part #	Description	List Price	Ship Weight (lbs.)	Pre-paid ship	Meets UPS Shipping	Warranty (yrs.)
PC3S	3 Switch Control for PC Fan Options	\$23.00 ●	1	A	Y	1



Grille Options

- **PCLK Kit Includes:** 1 light grille, 13 watt GU24 fluorescent bulb and 4 watt night light
- **PCLEDK Kit Includes:** 1 light grille with LED Lights
- **PCLMK Kit Includes:** 1 light grille (13 watt GU24 fluorescent bulb and 4 watt night light) with built-in motion sensor and a speed control

Part #	Description	List Price	Ship Weight (lbs.)	Pre-paid ship	Meets UPS Shipping	Warranty (yrs.)
PCLK	PC Light Kit	\$64.00 ●	3	A	Y	5
PCLEDK	PC Light Kit with LED Light	\$89.00 ●	3	A	Y	5
PCDLMG	PC Lighted Motion Sensing Grille for PCD110XM & PCD110XMH	\$72.00 ●	3	A	Y	5
PCMG	PC Metal Grille	\$33.00 ●	2	A	Y	5



Radiation Dampers & Kits

Part #	Description	List Price	Ship Weight (lbs.)	Pre-paid ship	Meets UPS Shipping	Warranty (yrs.)
PCRD	PC Fan Radiation Damper	\$76.00 ●	6	A	Y	5
PCLKRD*	PC Radiation Damper Kit with PCLK	\$140.00 ●	6	A	Y	5
PCLEDKRD*	PC Radiation Damper Kit with PCLEDK	\$165.00 ●	6	A	Y	5
PCDLMGRD*	PC Radiation Damper Kit with PCD110M & PCD110MH	\$148.00 ●	6	A	Y	5
PCD110MRD*	PC Radiation Damper for PCD110M & PCD110MH	\$108.00 ●	6	A	Y	5

*Kits Include Radiation Damper, Wiring Extender, and Grille

PCD - Premium CHOICE Fans - DC Models cont...

PCD Fan & Accessory Compatibility

The chart below indicate which plug-&-play or other PC accessories are compatible with each PCD Models.

Option	PCD Models with DC Motor				
	PCD110X	PCD110XH	PCD110XM	PCD110XMH	PCD110XIAQS
PCLK	✓	✓	-	-	✓
PCLEDK	✓	✓	-	-	✓
PCLMK	-	-	✓	✓	-
PC3S	✓	✓	✓	✓	✓
PCMG	✓	✓	-	-	-
PCRD	✓	✓	-	-	✓
PCLKRD	✓	✓	-	-	✓
PCLMKRD	-	-	✓	✓	-
PCLEDKRD	✓	✓	-	-	✓
PCD110MRD	-	-	✓	✓	-

The chart below indicates which plug-&-play or other PC accessories can be used together.

	Std. Grille	PCLK	PCLEDK	PCLMK	PC3S	PCRD	PCLMKRD	PCLKRD	PCLEDKRD	PCD110MRD	PCMG
Std. Grille	-	-	-	-	✓	✓	-	-	-	-	-
PCLK	-	-	-	-	✓	-	-	Included	-	-	-
PCLEDK	-	-	-	-	✓	-	-	-	Included	-	-
PCLMK	-	-	-	-	✓	-	Included	-	-	-	-
PC3S	✓	✓	✓	✓	-	✓	✓	✓	✓	✓	✓
PCRD	✓	-	-	-	✓	-	Included	Included	Included	Included	✓
PCLMKRD	-	-	-	Included	✓	Included	-	-	-	-	-
PCLKRD	-	Included	-	-	✓	Included	-	-	-	-	-
PCLEDKRD	-	-	Included	-	✓	Included	-	-	-	-	-
PCD110MRD	-	-	-	-	✓	Included	-	-	-	-	-
PCMG	-	-	-	-	✓	✓	-	-	-	-	-

NOTE: All accessories shown are PC exclusive accessories, the PC models are compatible with General RLC Accessories shown in this price book.

PCLP - Premium CHOICE Fans - Low Profile Models



PC - Premium Choice - Low Profile Models

Ceiling or Sidewall Mounted Bath Fans

Part #	Description	List Price	Ship Weight (lbs.)	Pre-paid ship	Meets UPS Shipping	Warranty (yrs.)
PCLP80	4" Premium Choice Low Profile Fan - 80 cfm	\$91.00 ●	7	A	Y	5
PCLP100	4" Premium Choice Low Profile Fan - 100 cfm	\$95.00 ●	7	A	Y	5



Control Options

Part #	Description	List Price	Ship Weight (lbs.)	Pre-paid ship	Meets UPS Shipping	Warranty (yrs.)
PCLPHS	PC Low Profile Humidity Sensor	\$42.00 ●	1	A	Y	5
PCLPSC	PC Low Profile Speed Control	\$42.00 ●	1	A	Y	5
PC3S	3 Switch Control for PC Fan Options	\$23.00 ●	1	A	Y	1



Grille Options

PCLPLEDK Kits Include: 1 light grille with LED Lights

Part #	Description	List Price	Ship Weight (lbs.)	Pre-paid ship	Meets UPS Shipping	Warranty (yrs.)
PCLPLEDK	PC Low Profile Light Kit with LED Light	\$89.00 ●	3	A	Y	5

Contractor Packs

PCLPH Pack includes: 4 Housings (order first)

"F" Pack includes: 4 Motors & Grilles (order second)

Part #	Description	List Price	Ship Weight (lbs.)	Pre-paid ship	Meets UPS Shipping	Warranty (yrs.)
PCLPH	PCLP80 Contractor 4-pk - Housing	\$112.00 ●	22	A	Y	5
PCLP80F	PCLP80 Contractor 4-pk - Motor & Grille	\$220.00 ●	19	A	Y	5
PCLP100F	PCLP100 Contractor 4-pk - Motor & Grille	\$236.00 ●	19	A	Y	5

PC Low Profile Fan & Accessory Compatibility

The chart below indicate which plug-&-play or other PC accessories are compatible with each PC Low Profile Models.

Option	PC Low Profile Models	
	PCLP80	PCLP100
PCLPLEDK	✓	✓
PCLPHS	✓	✓
PCLPSC	✓	✓

The chart below indicates which plug-&-play or other PC accessories can be used together.

	Std. Grille	PCLPLEDK	PCLPHS	PCLPSC	PC3S
Std. Grille	-	-	✓	✓	✓
PCLPLEDK	-	-	✓	✓	✓
PCLPHS	✓	✓	-	-	✓
PCLPSC	✓	✓	-	-	✓
PC3S	✓	✓	✓	✓	-

NOTE: All accessories shown are PC exclusive accessories, the PC models are compatible with General RLC Accessories shown in this price book.

PCRL - Premium CHOICE Recessed Vent Light Fans



PCRL - Premium Choice - Recessed Fan Models

Ceiling Mounted Recessed Vent Light Fan

Part #	Description	List Price	Ship Weight (lbs.)	Pre-paid ship	Meets UPS Shipping	Warranty (yrs.)
PCRL80	Recessed Vent Light Fan, E26 Bulb Base, Bulb Sold Separately - 80 cfm	\$133.00 ●	10	A	Y	5
PCRL80F	Recessed Vent Light Fan, GU24 Bulb Base, CFL Spiral Type Bulb and PCRL80LC Included - 80 cfm	\$164.00 ●	10	A	Y	5



PCRL Light Cover

Light Cover Option for PCRL80

Part #	Description	List Price	Ship Weight (lbs.)	Pre-paid ship	Meets UPS Shipping	Warranty (yrs.)
PCRL80LC	Light Cover for use with PCRL80 when not using PAR30 Style bulb	\$20.00 ●	1	A	Y	5



PCSC



PCHS



PC3S

Control Options

Part #	Description	List Price	Ship Weight (lbs.)	Pre-paid ship	Meets UPS Shipping	Warranty (yrs.)
PCSC	PC Speed Control	\$50.00 ●	1	A	Y	5
PCHS	PC Humidity Sensor	\$50.00 ●	1	A	Y	5
PC3S	3 Switch Control for PC Fan Options	\$23.00 ●	1	A	Y	1

PC Recessed Vent Light Fan & Accessory Compatibility

The chart below indicate which plug-&-play or other PC accessories are compatible with each PCRL Models.

Option	PC Low Profile Models	
	PCRL80	PCRL80F
PCRL80LC	✓	Included
PCHS	✓	✓
PCSC	✓	✓

PC - Premium CHOICE Fans - Replacement Parts

Part #	Description	List Price	Ship Weight (lbs.)	Pre-paid ship	Meets UPS Shipping	Warranty (yrs.)
PCDC4	4" Duct Connector	\$4.00 ●	1	A	Y	5
PCDC6	6" Duct Connector	\$4.00 ●	1	A	Y	5
PC50G-1	Replacement Grille for PC50, PC50X, PCV50 & PCV80	\$18.00 ●	1	A	Y	5
PCG-1	Replacement Grille standard size PC & PCD fans	\$20.00 ●	1	A	Y	5
PCLPG	Replacement Grille for PC Low Profile Models	\$20.00 ●	1	A	Y	5

RF - reFresh Outside Air Fans

RF - reFresh fans are build-to-order products.

Most orders will ship with a 3-week leadtime, but leadtimes will vary based on plant capacity and size of order.

LIST PRICE BOOK

For use in conjunction with authorized Discount Multiplier Schedule.

ORDER PROCESSING AND SHIPPING SCHEDULES

The following policy applies to products shown on pages 29 thru 30 of this Price Book.

S&P has instituted the following shipping standards in order to better serve our customers. Using these standards you can estimate when your order will ship, however, the shipping schedules will vary based on the availability of stock. S&P's Customer Service team will notify you in a timely manner if there is a problem with a pending order.

- **Quantities per order are limited** – please check with S&P Customer Service for shipping schedules regarding orders of 20 or more units.
- Orders for RF units received on a business day before 12:00 PM Eastern will be processed the same day and will ship on the 15th business day.
- Orders received on a business day after 12:00 PM Eastern will be processed the following business day and will ship on the 16th business day.
- Lead times are subject to component stock hand as well as the approval of open credit, credit card information, or other method of payment having been established.

SHIPPING POINTS

May vary on occasion, but typically all items ship from Jacksonville, FL USA

RF - reFresh Outside Air Fans



RF8 - reFresh Low Profile Models Outside Air Fans

Part #	Description	List Price	Ship Weight (lbs.)	Pre-paid ship	Meets UPS Shipping	Warranty (yrs.)
RF8-120AC	Low profile outside air fan for 6" round duct, AC Motor	\$298.00	17	A	Y	5
RF8-120AC-ES24V	Low profile outside air fan for 6" round duct, AC Motor, ES24V control mounted	\$380.00	18	A	Y	5
RF8-120EC	Low profile outside air fan for 6" round duct, AC Motor	\$554.00	15	A	Y	5
RF8-120EC-ES24V	Low profile outside air fan for 6" round duct, EC Motor, ES24V control mounted	\$636.00	16	A	Y	5

Filters for RF8 - reFresh Low Profile Models

8x8x2 filters

Part #	Description	List Price	Ship Weight (lbs.)	Pre-paid ship	Meets UPS Shipping	Warranty (yrs.)
M8F8X8X2	MERV 8 filter, 7.75" x 7.75" x 1.75"	\$12.00 ●	3	A	Y	1
M13F8X8X2	MER 13 filter, 7.75" x 7.75" x 1.75"	\$14.00 ●	3	A	Y	1



RF10 - reFresh Standard Size Models Outside Air Fans

Part #	Description	List Price	Ship Weight (lbs.)	Pre-paid ship	Meets UPS Shipping	Warranty (yrs.)
RF10-160AC	Outside air fan for 6" round duct, AC Motor	\$340.00	23	A	Y	5
RF10-160AC-ES24V	Outside air fan for 6" round duct, AC Motor, ES24V control mounted	\$398.00	24	A	Y	5
RF10-160AC-P	Outside air fan for 6" round duct, AC Motor, excludes power cord	\$336.00	23	A	Y	5
RF10-160AC-P-ES24V	Outside air fan for 6" round duct, AC Motor, ES24V control mounted, excludes power cord	\$394.00	24	A	Y	5
RF10-160EC	Outside air fan for 6" round duct, EC Motor	\$580.00	20	A	Y	5
RF10-160EC-ES24V	Outside air fan for 6" round duct, EC Motor, ES24V control mounted	\$676.00	22	A	Y	5
RF10-160EC-P	Outside air fan for 6" round duct, EC Motor, excludes power cord	\$576.00	20	A	Y	5
RF10-160EC-P-ES24V	Outside air fan for 6" round duct, EC Motor, ES24V control mounted, excludes power cord	\$672.00	22	A	Y	5

Filters for RF10 - reFresh Standard Size Models

10x10x2 filters

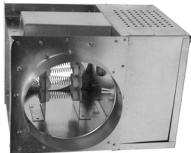
Part #	Description	List Price	Ship Weight (lbs.)	Pre-paid ship	Meets UPS Shipping	Warranty (yrs.)
M8F10X10X2	MERV 8 filter, 9.75" x 9.75" x 1.75"	\$12.00 ●	3	A	Y	1
M13F10X10X2	MER 13 filter, 9.75" x 9.75" x 1.75"	\$14.00 ●	3	A	Y	1

Outside Air Specific Accessories



Motorized Backdraft Damper

Part #	Description	List Price	Ship Weight (lbs.)	Pre-paid ship	Meets UPS Shipping	Warranty (yrs.)
MD6	Motorized backdraft damper for 6" round duct	\$65.00 ●	9	A	Y	1



Inline Duct Heater

Part #	Description	List Price	Ship Weight (lbs.)	Pre-paid ship	Meets UPS Shipping	Warranty (yrs.)
DH6-120V	Inline duct heater for 6" round duct, 120V	\$561.00 ●	9	A	Y	1



CAR Backdraft Dampers

Part #	Description	List Price	Ship Weight (lbs.)	Pre-paid ship	Meets UPS Shipping	Warranty (yrs.)
CAR150	6" Steel backdraft damper - spring-loaded	\$7.00 ●	1	A	Y	1



Outside Air Control Options

Part #	Description	List Price	Ship Weight (lbs.)	Pre-paid ship	Meets UPS Shipping	Warranty (yrs.)
ES24V	Envirosense Ventilation Control, 24V	\$79.00 ●	1	A	Y	5

NOTE: All accessories shown are outside air application recommended accessories, the RF models are compatible with General RLC Accessories shown in this price book.

TR Energy Recovery Ventilators

LIST PRICE BOOK

For use in conjunction with authorized Discount Multiplier Schedule.

ORDER PROCESSING AND SHIPPING SCHEDULES

The following policy applies to products shown on page 33 of this Price Book.

S&P has instituted the following shipping standards in order to better serve our customers. Using these standards you can estimate when your order will ship, however, the shipping schedules will vary based on the availability of stock. S&P's Customer Service team will notify you in a timely manner if there is a problem with a pending order.

- **Quantities per order are limited** – please check with S&P Customer Service for shipping schedules regarding orders of 5 or more units including pallet quantities of TR models.
- Orders received on a business day before 12:00 PM Eastern will be processed the same day and will ship the next business day.
- Orders received on a business day after 12:00 PM Eastern will be processed the following business day and will ship the second business day following the day in which the order was placed.
- Lead times are subject to stock on hand as well as the approval of open credit, credit card information, or other method of payment having been established.

SHIPPING POINTS

May vary on occasion, but typically all items ship from Jacksonville, FL USA

TR Freight Policy

This freight policy cannot be used for projects created in the Optimizer2 Fan Selection program or on any product not in this catalog.



MODEL TR – RESIDENTIAL ERV FREIGHT

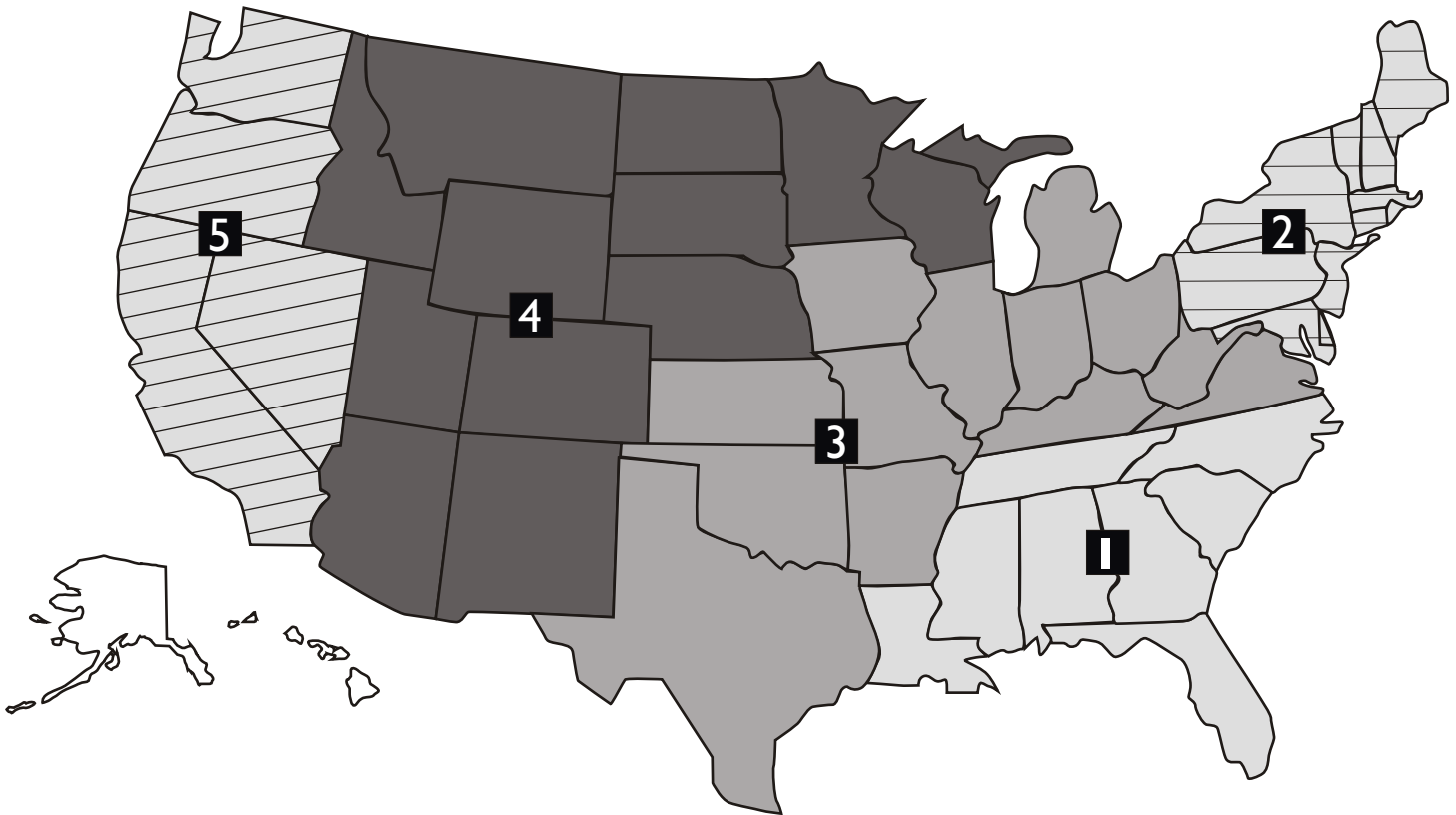
This freight policy applies **ONLY** to Models TR. Freight for all other S&P Products (Commercial or Residential) must be factored separately.

- Zone 1: add 1% of **list price**
- Zone 2: add 2% of **list price**
- Zone 3: add 2% of **list price**
- Zone 4: add 3% of **list price**
- Zone 5: add 3% of **list price**

How do I calculate Freight?	
Order Example:(Texas zone 3)	
TR90	- List \$ = \$ 970
SPTL	- List \$ = \$ 82
Total List \$ = \$ 1052	
Freight % = x .02	
Freight Amount = \$ 21.04	

For any areas outside of the zones, such as Hawaii, Alaska and Puerto Rico, please contact our customer service department for a freight quote.

Models TR will have freight added based on destination zone up to 5 units, for orders and/or quotes over 5 units that are less than \$1750/net S&P will provide a Freight Quote. Please refer to the map below to determine zone. Each zone has an additional percentage of list order price to add on for freight costs. The breakdown of zones is as follows:





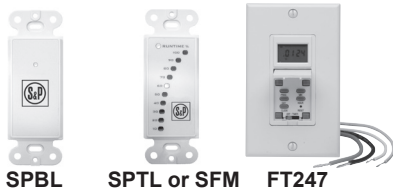
TR Series

Total Recovery for All Climates

Part #	Description	List Price	Ship Weight (lbs.)	Meets UPS Shipping	Warranty (yrs.)
TR90	ERV, painted cabinet, line cord, with low voltage circuit- 40-110 cfm	\$970.00 ●	41	Y	10-core/ 5-unit
	Pallet quantity of 10 units* (Part #: PAL-TR90)	\$8670.00 ●	560	N	
TR90G	ERV, galvanized cabinet, no line cord, no low voltage circuit - 40-110 cfm	\$918.00 ●	41	Y	10-core/ 5-unit
	Pallet quantity of 10 units* (Part #: PAL-TR90G)	\$8160.00 ●	560	N	
TR130	ERV, painted cabinet, line cord, with low voltage circuit - 50-140 cfm	\$1142.00 ●	65	Y	10-core/ 5-unit
	Pallet quantity of 8 units* (Part #: PAL-TR130)	\$8320.00 ●	560	N	
TR200	ERV, painted cabinet, line cord, with low voltage circuit - 100-200 cfm	\$1479.00 ●	88	N	10-core/ 5-unit
	Pallet quantity of 4 units* (Part #: PAL-TR200)	\$5304.00 ●	392	N	
TR300	ERV, painted cabinet, line cord, with low voltage circuit - 150-300 cfm	\$1683.00 ●	95	N	10-core/ 5-unit
	Pallet quantity of 4 units* (Part #: PAL-TR300)	\$6324.00 ●	420	N	

NOTES

* Full pallet quantity must be ordered to qualify for pallet pricing. Pricing shown is for full pallet. Please use full pallet Part # shown in **bold** when ordering.



TR Electronic Controls

For Models TR90, T90G, TR130, TR200 and TR300 Only

Part #	Description	List Price	Ship Weight (lbs.)	Meets UPS Shipping	Warranty (yrs.)
SPTL	Percentage Timer Control	\$82.00 ●	1	Y	5
SPBL	Push Button Point-of-Use Control	\$41.00 ●	1	Y	5
SFM	Percentage Timer Control with Furnace Interlock	\$102.00 ●	1	Y	5
FT247	Programmable Fan Timer, 24/7 Day	\$68.00 ●	1	Y	1

TR Accessories & Parts

For Models TR90, T90G, TR130, TR200 and TR300 Only

Part #	Description	List Price	Ship Weight (lbs.)	Meets UPS Shipping	Warranty (yrs.)
CAR150	6" Steel Backdraft Damper for TR90(G) thru TR200	\$7.00 ●	1	Y	1
CAR200	8" Steel Backdraft Damper for TR90(G) thru TR300	\$9.00 ●	1	Y	1
BD6	6" Gravity Backdraft Damper for TR90(G) thru TR200	\$29.00 ●	2	Y	1
BD8	8" Gravity Backdraft Damper for TR90(G) thru TR300	\$37.00 ●	3	Y	1
VW106	6" White vinyl wall cap for TR90(G) thru TR200	\$82.00 ●	2	Y	1
VB-106	6" Brown vinyl wall cap for TR90(G) thru TR200	\$16.00 ●	2	Y	1
VT8	8" Taupe vinyl wall cap for TR90(G) thru TR300	\$67.00 ●	2	Y	1
FA8-G	8" Galvanized metal wall cap for TR90(G) thru TR300	\$61.00 ●	3	Y	1
FA8-P	8" Paintable metal wall cap for TR90(G) thru TR300	\$61.00 ●	3	Y	1
VW12x8	12x8" Louver to 8" round galvanized metal wall cap for TR90(G) thru TR300	\$61.00 ●	4	Y	1
990076	Universal filters (10 packs of filter media) for TR90(G) thru TR300	\$134.00 ▲	20	Y	1
990447	Universal filters (3 pack) for TR90(G) thru TR300	\$59.00 ▲	7	Y	1

TRC, TRCe, TRCV, & TRCVe

Commercial Energy Recovery Ventilators

LIST PRICE BOOK

For use in conjunction with authorized Discount Multiplier Schedule.

ORDER PROCESSING AND SHIPPING SCHEDULES

The following policy applies to products shown on pages 36 thru 38 of this Price Book.

S&P has instituted the following shipping standards in order to better serve our customers. Using these standards you can estimate when your order will ship, however, the shipping schedules will vary based on the availability of stock. S&P's Customer Service team will notify you in a timely manner if there is a problem with a pending order.

- **Quantities per order are limited** – please check with S&P Customer Service for shipping schedules regarding orders of 2 or more units.
- Orders received on a business day before 12:00 PM Eastern will be processed the same day and will ship the next business day.
- Orders received on a business day after 12:00 PM Eastern will be processed the following business day and will ship the second business day following the day in which the order was placed.
- **EXCEPTION:** Orders with Replacement Filters will typically dropship from Madison, WI, and will ship the 3rd business day following the day in which the order was placed.
- Lead times are subject to stock on hand as well as the approval of open credit, credit card information, or other method of payment having been established.

SHIPPING POINTS

May vary on occasion, but typically all items ship from Jacksonville, FL USA

TRC, TRCe, TRCV, TRCVe Freight Policy



This freight policy cannot be used for projects created in the Optimizer2 Fan Selection program or on any product not in this catalog.

MODEL TRC, TRCe, TRCV, & TRCVe – LIGHT COMMERCIAL ERV FREIGHT

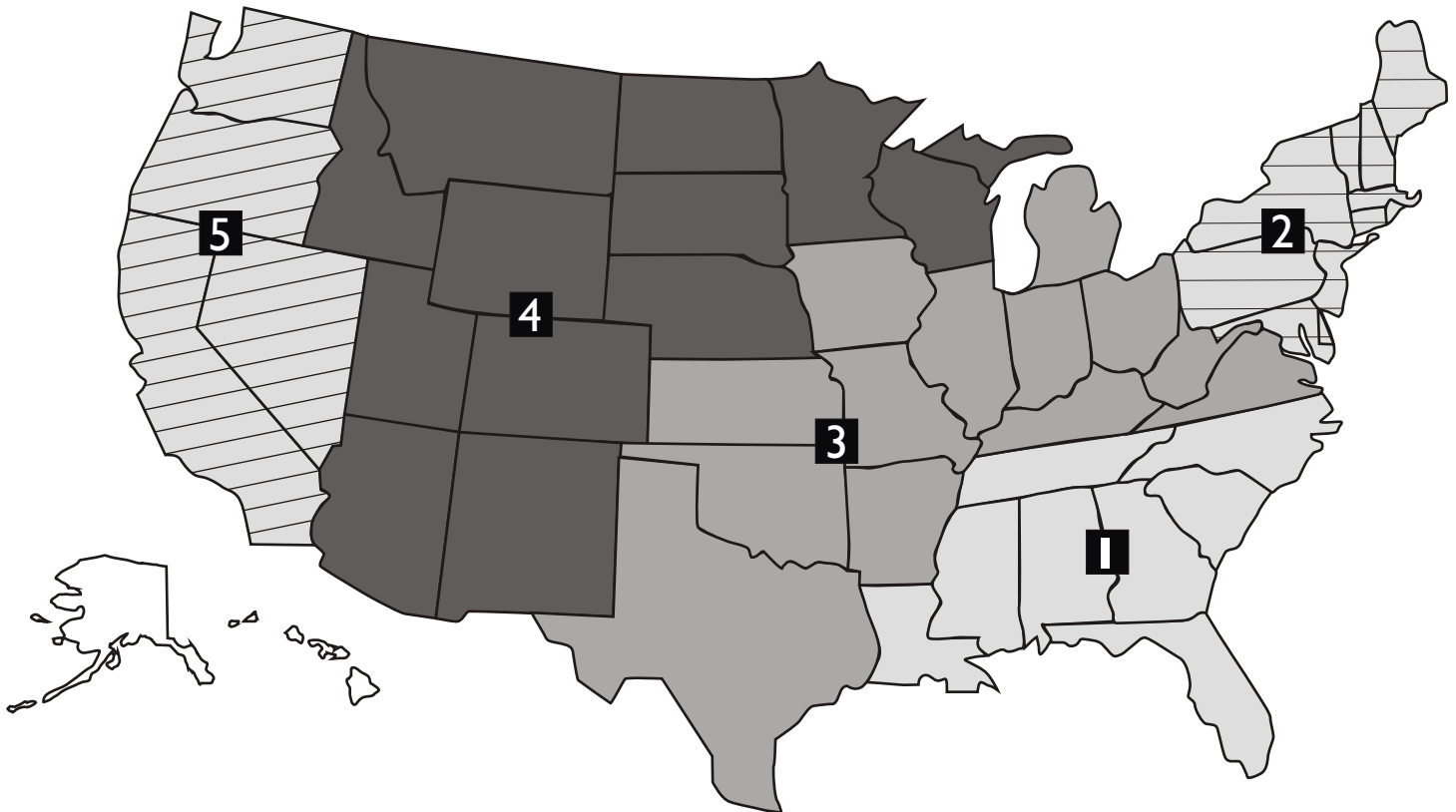
This freight policy applies **ONLY** to Models TRC, TRCe, TRCV, & TRCVe Freight for all other S&P Products (Commercial or Residential) must be factored separately.

- Zone 1: add 1% of **list price**
- Zone 2: add 2% of **list price**
- Zone 3: add 2% of **list price**
- Zone 4: add 3% of **list price**
- Zone 5: add 3% of **list price**

How do I calculate Freight?
Order Example:(Texas zone 3)
TRC500-115 - List \$ = \$ 3363
SCO2-W - List \$ = \$ 670
Total List \$ = \$ 4033
Freight % = x .02
Freight Amount = \$ 80.66

For any areas outside of the zones, such as Hawaii, Alaska and Puerto Rico, please contact our customer service department for a freight quote.

Models TRC TRCe, TRCV, & TRCVe will have freight added based on destination zone up to 5 units, for orders and/or quotes over 5 units S&P will provide a Freight Quote. Please refer to the map below to determine zone. Each zone has an additional percentage of list order price to add on for freight costs. The breakdown of zones is as follows:





TRC Series - Horizontal Configuration

Total Recovery for All Climates

Part #	Description	List Price	Ship Weight (lbs.)	Meets UPS Shipping	Warranty (yrs.)
TRC500-115	Energy Recovery Ventilator - 115V - 600 cfm	\$3,363.00 ●	160	N	10-core/2-unit
TRC500-230	Energy Recovery Ventilator - 230V - 600 cfm	\$3,363.00 ●	160	N	10-core/2-unit
TRC800-115	Energy Recovery Ventilator - 115V - 970 cfm	\$5,150.00 ●	211	N	10-core/2-unit
TRC800-230	Energy Recovery Ventilator - 230V - 970 cfm	\$5,150.00 ●	211	N	10-core/2-unit
TRC1200-115	Energy Recovery Ventilator - 115V - 1 Phase - 1575 cfm	\$7,777.00 ●	530	N	10-core/2-unit
TRC1200-230	Energy Recovery Ventilator - 230V - 1 Phase - 1575 cfm	\$7,777.00 ●	530	N	10-core/2-unit
TRC1200-230-3P	Energy Recovery Ventilator - 230V - 3 Phase - 1575 cfm	\$7,777.00 ●	530	N	10-core/2-unit
TRC1200-460-3P	Energy Recovery Ventilator - 460V - 3 Phase - 1575 cfm	\$7,777.00 ●	530	N	10-core/2-unit
TRC1600-115	Energy Recovery Ventilator - 115V - 1 Phase - 2025 cfm	\$10,455.00 ●	505	N	10-core/2-unit
TRC1600-230	Energy Recovery Ventilator - 230V - 1 Phase - 2025 cfm	\$10,455.00 ●	505	N	10-core/2-unit
TRC1600-230-3P	Energy Recovery Ventilator - 230V - 3 Phase - 2025 cfm	\$10,455.00 ●	505	N	10-core/2-unit
TRC1600-460-3P	Energy Recovery Ventilator - 460V - 3 Phase - 2025 cfm	\$10,455.00 ●	505	N	10-core/2-unit

TRCV Series - Vertical Configuration

Total Recovery for All Climates

Part #	Description	List Price	Ship Weight (lbs.)	Meets UPS Shipping	Warranty (yrs.)
TRC800V-115	Energy Recovery Ventilator - 115V - 970 cfm	\$5,150.00 ●	211	N	10-core/2-unit
TRC800V-230	Energy Recovery Ventilator - 230V - 970 cfm	\$5,150.00 ●	211	N	10-core/2-unit



TRC & TRCV Electronic Controls

For TRC & TRCV Models Only

Part #	Description	List Price	Ship Weight (lbs.)	Meets UPS Shipping	Warranty (yrs.)
STC7D-W	Digital Time Clock - Wall Mount	\$206.00 ●	1	Y	5
SMC-C	Motion (Occupancy) Control - Ceiling Mount	\$237.00 ●	1	Y	5
SCO2-W	Carbon Dioxide Control - Wall Mount	\$670.00 ●	1	Y	5



TRCe Series - Horizontal Configuration with EC Motor - Total Recovery for All Climates

Part #	Description	List Price	Ship Weight (lbs.)	Meets UPS Shipping	Warranty (yrs.)
TRCe500-115	Energy Recovery Ventilator with EC Motor - 115V - 1 PH	\$3,981.00 ●	160	N	10-core/2-unit
TRCe500-230	Energy Recovery Ventilator with EC Motor - 230V - 1 PH	\$3,981.00 ●	160	N	10-core/2-unit
TRCe800-115	Energy Recovery Ventilator with EC Motor - 115V - 1 PH	\$6,180.00 ●	211	N	10-core/2-unit
TRCe800-230	Energy Recovery Ventilator with EC Motor - 230V - 1PH	\$6,180.00 ●	211	N	10-core/2-unit
TRCe1200-115	Energy Recovery Ventilator with EC Motor - 115V - 1 PH	\$9,425.00 ●	530	N	10-core/2-unit
TRCe1200-230	Energy Recovery Ventilator with EC Motor - 230V - 1 PH	\$9,425.00 ●	530	N	10-core/2-unit

TRCe Series - Vertical Configuration with EC Motor - Total Recovery for All Climates

Part #	Description	List Price	Ship Weight (lbs.)	Meets UPS Shipping	Warranty (yrs.)
TRCe800V-115	Energy Recovery Ventilator with EC Motor - 115V - 1 PH	\$6,180.00 ●	211	N	10-core/2-unit
TRCe800V-230	Energy Recovery Ventilator with EC Motor - 230V - 1PH	\$6,180.00 ●	211	N	10-core/2-unit

TRCe Electronic Controls

For TRCe Models Only

Part #	Description	List Price	Ship Weight (lbs.)	Meets UPS Shipping	Warranty (yrs.)
SC-TRCe	Remote potentiometer speed control for TRCe	\$83.00 ●	1	Y	5

Ship Schedules:
● Next Day Shipment From Stock
▲ 3 Day Shipment From Stock
◆ 10 Day Shipment

Accessories & Parts

For TRC, TRCV, TRCe, & TRCVe Models Only

Part #	Description	List Price	Ship Weight (lbs.)	Meets UPS Shipping	Warranty (yrs.)
45EVT10	10" Round Flange Kit (2 in Kit) for TRC500*	\$93.00 ●	5	Y	1
BD10	Indoor 10" Round Backdraft Damper for TRC500	\$50.00 ●	5	Y	1
BD12	Indoor 12" Round Backdraft Damper for TRC800	\$52.00 ●	6	Y	1
FA10-G	10" round galvanized metal wall cap for TRC500**	\$67.00 ●	5	Y	1
FA12-G	12" round galvanized metal wall cap for TRC800	\$72.00 ●	6	Y	1
FA10-P	10" round paintable metal wall cap for TRC500**	\$67.00 ●	5	Y	1
FA12-P	12" paintable metal wall cap for TRC800	\$72.00 ●	6	Y	1
VW12X12-G	12x12" louver to 10" round galvanized metal wall cap for TRC500**	\$67.00 ●	6	Y	1
990080	MERV8 14x20x2" filter (Single) for TRC(e)500 & 1200	\$8.00 ▲	3	Y	1
990091	MERV8 14x20x2" filter (Case of 12) for TRC(e)500 & 1200	\$93.00 ▲	15	Y	1
990083	MERV8 20x20x2" filter (Single) for TRC(e)800 & 1600	\$9.00 ▲	3	Y	1
990084	MERV8 20x20x2" filter (Case of 12) for TRC(e)800 & 1600	\$103.00 ▲	15	Y	1

*The TRC500 comes standard with rectangular flanges. To use the 45EVT10 you must remove and discard the standard flanges. The TRC500 requires 4 flanges total, 2 kits must be ordered to change the TRC500 from rectangular to round duct connection.

**Parts BD10, FA10-G, FA10-P and VW12X12-G require round duct, to use with the TRC500 you must use part 45EVT10 for round duct connections.

Ship Schedules:
● Next Day Shipment From Stock
▲ 3 Day Shipment From Stock
◆ 10 Day Shipment

Group B - Commercial Product Line (Quickship)

LIST PRICE BOOK

For use in conjunction with authorized Discount Multiplier Schedule.

ORDER PROCESSING AND SHIPPING SCHEDULES

The following policy applies to products shown on pages 42 thru 69 of this Price Book.

S&P has instituted the following shipping standards in order to better serve our customers. Using these standards you can estimate when your order will ship, however, the shipping schedules will vary based on the availability of inventory. S&P's Customer Service team will notify you in a timely manner if there is a problem with a pending order.

- **Quantities per order are limited** – please check with S&P Customer Service for shipping schedules regarding orders of 5 or more units
- Shipping schedules for Group B – Commercial Products are shown as symbols next to the list price for each item. An order's shipping schedule will be based on the longest shipping schedule product on the order. The symbols are:

Ship Schedules:
● Next Day Shipment From Stock
▲ 3 Day Shipment From Stock
◆ 10 Day Shipment

- For Next Day Shipments from Stock the order will ship the next business day after the order is processed and acknowledged by S&P Customer Service. For 3 Day Shipments from Stock the order will ship the 3rd business day after the order is processed and acknowledged by S&P Customer Service. For 10 day Shipments the order will ship the 10th day after the order is processed and acknowledged by S&P Customer Service.
- Orders received on a business day before 12:00 PM Eastern will be processed the same day and will ship based on the criteria outlined in the 3rd bullet point above.
- Orders received on a business day after 12:00 PM Eastern will be processed the following business day and will ship based on the criteria outlined in the 3rd bullet point above.
- Lead times are subject to inventory on hand as well as the approval of open credit, credit card information, or other method of payment having been established.

SHIPPING POINTS

May vary on occasion, but typically all items ship from Jacksonville, FL USA

Freight Policy

This freight policy cannot be used for projects created in the Optimizer2 Fan Selection program or on any product not in this catalog.

QUICKSHIP COMMERCIAL PRODUCTS FREIGHT

The Quickship Commercial Product Line is categorized into two sub-groups: B and C.

B GROUP includes the majority of the Quickship Commercial Products and will have freight added based on destination zone up to 5 units, for orders and/or quotes over 5 units S&P will provide a Freight Quote. Please refer to the attached map to determine zone. Each zone has an additional percentage of list order price to add on for freight costs. The breakdown of zones is as follows:

- Zone 1: add 7.5% of **list price**
- Zone 2: add 9.0% of **list price**
- Zone 3: add 8.0% of **list price**
- Zone 4: add 9.5% of **list price**
- Zone 5: add 10.0% of **list price**

For any areas outside of the zones, such as Hawaii, Alaska and Puerto Rico, please contact our customer service department for a freight quote.

How do I calculate Freight?

Order Example:

SDB06MH1S - List \$ = \$614

411012 - List \$ = \$ 33

711216 - List \$ = \$152

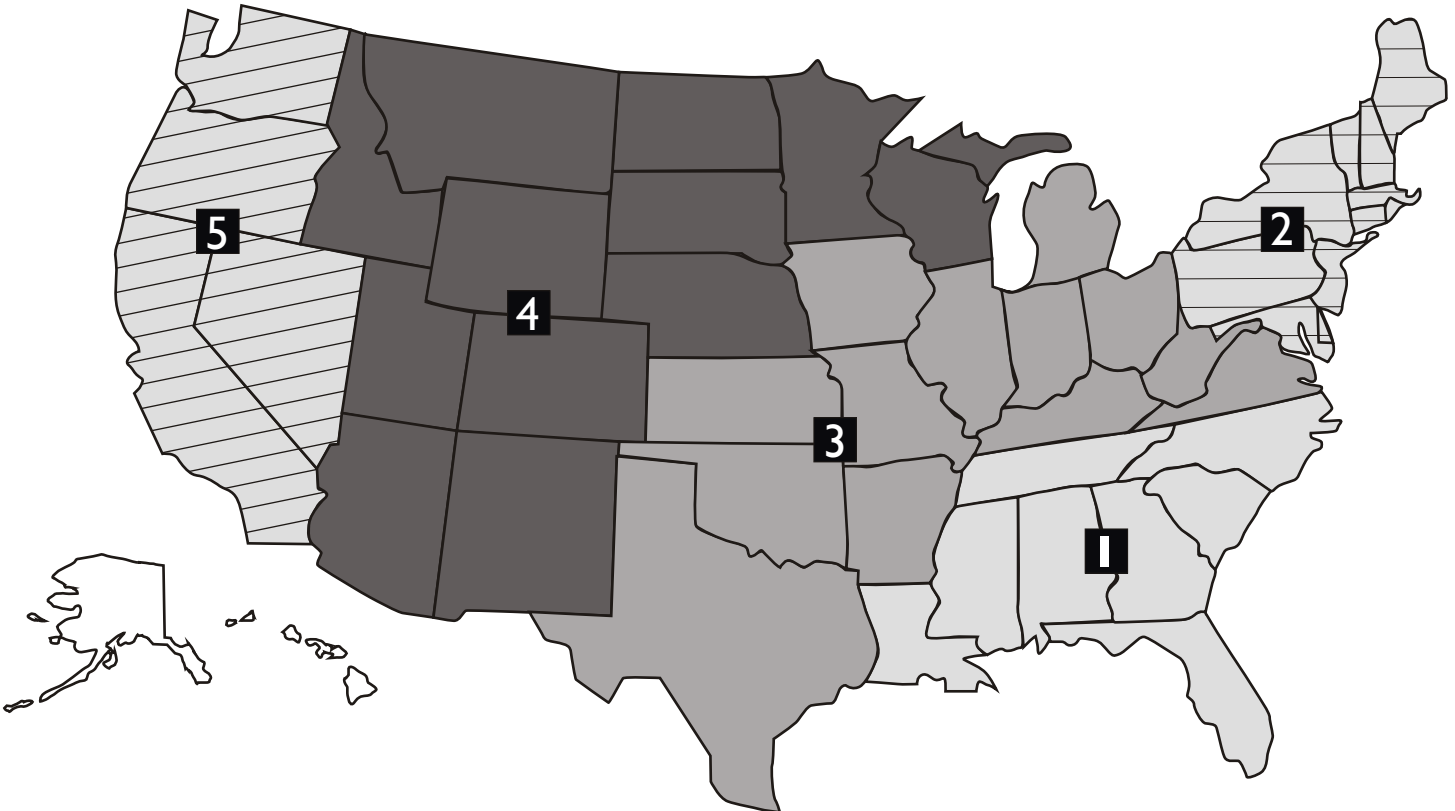
Total List \$ = \$799

Freight % = x .08

Freight Amount = \$63.92

C GROUP some of the Quickship Commercial Products are oversized and are not included in the general freight policy. Freight charges for any of these products must be quoted per order, through the customer service department.

*These products are shaded in grey boxes.



Any special order curbs (pitched, coating, ect.) will be drop shipped with true freight costs billed. Quickship Commercial Products freight policy is not applicable for accessory only orders. These orders will be processed with the standard pre-pay and add.

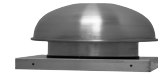
COMPETITORS CROSS REFERENCE MODELS

January 2018

Models are for general similarity only. Refer to specifications and construction data for details.

S&P	DESCRIPTION	ACME	CARNES	COOK	GREENHECK	PENN	TWIN CITY	COOLAIR	FANTECH	CAPTIVE AIRE
SDB	Power Roof Exhauster - Centrifugal -Belt Drive	PV/PNN	VEBK	ACEB	GB	DXB/KB/JB/MB	BCRD	CRBCA	5BDD	DD-FA
LPD	Power Roof Exhauster - Centrifugal -Direct Drive	PRN	VEDK	ACED	G	DX	CRDD	CRDA	5DDD	DR-HFA
SDBD	Power Roof Exhauster - Centrifugal -Direct Drive	PRN	VEDK	ACED	G	DX	CRDD	CRDA	5DDD	DR-HFA
STXB	Upblast Roof Exhauster - Centrif. - Belt Drive	PNU/PU/PUH	VUBK	ACRUB	CUBE	FXB/FMX	BCRU	UBCA	5BDU	NCA-FA
STXBRHUL	Upblast Restaurant Hood Exhauster - Belt Drive	PNU-RG	VRBK	VCR	CUBE	FXBFT/FMBFT	BCRUR	CUBA	5BDU-762	NCA-HPFA
STXD/STXD-RHUL	Upblast Roof Exhauster - Centrif. -Direct Drive	PDU	VUDK	ACRUD	CUE	FX/FMX	DCRU	UDCA	5DDU	DU-HFA
CWD	Sidewall Centrifugal Exhaust-Direct Drive	PW	VWVK	ACWD	GW	WX/WA/WB	TCWX	CWDA	5DDW	-
AF/FF/FFC	Bathroom Fans & Cabinet Fans	V/VQ	VCDD	GEMINI-GC/GN	SP/CSP	ZEPHYR-Z	T/TL	CF/CFL	-	CFA-CA
KSFV	Kitchen Supply Fan	AFSI	VSBB	KSPB	KSU/RSF	MU	BCFS	CSF/ISIS	5FSU	A-SERIES
ARE/ARS	Dome Axial Power Roof Exhaust/Supply	LQ	LEDA	AQD	AIS	DAE	-	SASD/SAED	5ADE/5ADS	DDAR-FA
GED	Sidewall Propeller Fan - Direct Drive	FQ/FN	LTDK/LZDK	APD/SWD	SEI/SSI	P	TCPE	CDC	-	CEPRSM
LCE/LCS	Sidewall Propeller Fan - Belt Drive	DC/DCK	LWBA/LWBK	XLN/SWB	SBE/S 1&2	BLL/BFM/BBK	WPMB	C-SERIES	1RHR/1RHS	-
SQB	Inline Duct Fan - Centrifugal - Belt Drive	XB	VIBK	SQN-B/SQI-B	BSQ	SXB	BST	SQBA	-	ISQB
SQD	Inline Duct Fan - Centrifugal - Direct Drive	XD	VIDK	SQN-D/SQI-D	SQ	SX	DSI	SQDA	-	-
RXCII	Non-powered Roof Vent - Round Dome	LQV	GSA	PR	GRS	DR	GRV	ARVE	-	-
CM	Belt Driven Utility Vent Set	QBR	VBR/VFBA	CPRD/CPFB	SFD/SFB/SWD	D	BCV	-	-	-

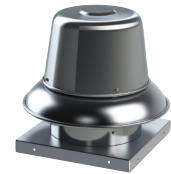
MODEL LPD *Low Profile Direct Drive Centrifugal Roof/Sidewall Exhauster*



Model LPD	115/1/60		Roof Mounting Curb 12" High (4)		Gravity Damper		Damper Motor (Loose)		Speed Control (Loose)†	
	Stock No.	List \$	Stock No.	List \$	Stock No.	List \$	Stock No.	List \$	Stock No.	List \$
06	LPD061AS †	331 ●	611214 †	166 ●	411011 †	33 ●	411611	182 ●	2727.1	52 ●
08	LPD081AS †	376 ●	611214 †	166 ●	411011 †	33 ●	411611	182 ●	2727.1	52 ●

- Notes:**
- List price includes assembled fan, motor prewired, UL-705 listing label, disconnect switch (not mounted or wired), birdscreen.
 - Standard motors are 115/1/60 totally enclosed and are compatible with the optional electronic speed control switch.
 - Refer to submittals and catalog for construction specifications and dimensional details.
 - Galvanized Curb with wood nailer, insulation, damper shelf, and mitered 3" cant.
 - For options & accessories not shown, contact your sales representative for availability and pricing.

MODEL SDBD *Downblast Direct Drive Centrifugal Roof Exhauster*



Model SDBD	Motor Hp	Motor RPM (Nom.)	115/1/60		230/1/60		Roof Mounting Curb 12" High		Gravity Damper †		Damper Motor (Loose) †		Speed Control Switch (Loose) †					
			Stock No.	List \$	Stock No.	List \$	Stock No.	List \$	Stock No.	List \$	Stock No.	List \$	Stock No.	List \$	115/1/60		230/1/60	
															Stock No.	List \$	Stock No.	List \$
6C	1/10	1650	SDBD06CJH1AS	327 ●	SDBD06CJH1CS	327 ◆	711216	152 ●	411012	33 ●	411611	182 ●	2727.1	52 ●	3232.1	106 ◆		
6	1/10	1650	SDBD06JH1AS	344 ●	SDBD06JH1CS	344 ◆	711216	152 ●	411012	33 ●	411611	182 ●	2727.1	52 ●	3232.1	106 ◆		
7	1/10	1650	SDBD07JH1AS	335 ●	SDBD07JH1CS	335 ◆	711216	152 ●	411012	33 ●	411611	182 ●	2727.1	52 ●	3232.1	106 ◆		
8	1/25	1150	SDBD08HM1AS	374 ●	N/A	N/A	711216	152 ●	411012	33 ●	411611	182 ●	2727.1	52 ●	N/A	N/A		
	1/10	1650	SDBD08JH1AS	390 ●	SDBD08JH1CS	390 ◆	711216	152 ●	411012	33 ●	411611	182 ●	2727.1	52 ●	3232.1	106 ◆		
	1/4	1750	SDBD08MH1AS	440 ●	SDBD08MH1CS	440 ◆	711216	152 ●	411012	33 ●	411611	182 ●	2727.1	52 ●	3232.1	106 ◆		
10	1/4	1150	SDBD10MM1AS	476 ●	SDBD10MM1CS	476 ◆	711216	152 ●	411012	33 ●	411611	182 ●	2727.1	52 ●	3232.1	106 ◆		
	1/3	1700	SDBD10PH1AS	509 ●	SDBD10PH1CS	509 ◆	711216	152 ●	411012	33 ●	411611	182 ●	2828.1	116 ●	3232.1	106 ◆		
12	1/4	1150	SDBD12MM1AS	596 ●	SDBD12MM1CS	596 ◆	711218	184 ●	411014	44 ●	411611	182 ●	2727.1	52 ●	3232.1	106 ◆		
	1/2	1700	SDBD12QH1AS	628 ●	SDBD12QH1CS	628 ◆	711218	184 ●	411014	44 ●	411611	182 ●	2828.1	116 ●	3232.1	106 ◆		
14	1/4	1100	SDBD14MM1AS	599 ●	SDBD14MM1CS	599 ◆	711218	184 ●	411014	44 ●	411611	182 ●	2727.1	52 ●	3232.1	106 ◆		
15	1/2	1150	SDBD15QM1AS	751 ●	SDBD15QM1CS	751 ◆	711222	248 ●	411018	49 ●	411611	182 ●	2828.1	116 ●	3232.1	106 ◆		
16	1/2	1150	SDBD16QM1AS	784 ●	SDBD16QM1CS	784 ◆	711222	248 ●	411018	49 ●	411611	182 ●	2828.1	116 ●	3232.1	106 ◆		

- Notes:**
- List price includes assembled fan, motor prewired, UL-705 listing label, disconnect switch (not mounted or wired), birdscreen.
 - Standard motors are open drip-proof either 115/1/60 or 230/1/60.
 - Refer to submittals and catalog for construction specifications and dimensional details.
 - Galvanized Curb with wood nailer, insulation, damper shelf, and mitered 3" cant.
 - For options & accessories not shown, contact your sales representative for availability and pricing.

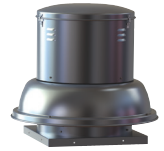
IMPORTANT
Motor Voltage and Phase Must Be Specified on Your Order!

† Ships via parcel carrier (UPS, FedEx, DHL...etc.)

Ship Schedules:
● Next Day Shipment From Stock
▲ 3 Day Shipment From Stock
◆ 10 Day Shipment

MODEL SDB

Downblast Belt Drive Centrifugal Roof Exhauster



Model SDB	Motor Hp	RPM	Single Phase ODP		Three Phase ODP	
			Stock No.	List \$	Stock No.	List \$
						208-230-460 V
6	1/4	1600	SDB06ML1S	614 ●	SDB06ML3S	715 ▲
	1/4	1800	SDB06MM1S	614 ●	SDB06MM3S	715 ▲
	1/4	2000	SDB06MH1S	614 ●	SDB06MH3S	715 ▲
7	1/4	1600	SDB07ML1S	614 ●	SDB07ML3S	715 ▲
	1/4	1800	SDB07MM1S	614 ●	SDB07MM3S	715 ▲
	1/4	2000	SDB07MH1S	614 ●	SDB07MH3S	715 ▲
8	1/4	1550	SDB08ML1S	615 ●	SDB08ML3S	716 ▲
	1/4	1750	SDB08MM1S	615 ●	SDB08MM3S	716 ▲
	1/4	1950	SDB08MH1S	615 ●	SDB08MH3S	716 ▲
	1/3	2100	SDB08PH1S	616 ●	SDB08PH3S	717 ▲
10	1/4	1450	SDB10ML1S	742 ●	SDB10ML3S	785 ▲
	1/4	1600	SDB10MH1S	742 ●	SDB10MH3S	785 ▲
	1/3	1750	SDB10PH1S	758 ●	SDB10PH3S	791 ▲
12	1/4	1700	SDB12MH1S	795 ●	SDB12MH3S	842 ▲
	1/3	1550	SDB12PH1S	806 ●	SDB12PH3S	844 ▲
	1/2	1750	SDB12QH1S	824 ●	SDB12QH3S	866 ●
14	1/4	1100	SDB14MH1S	778 ●	SDB14MH3S	859 ▲
	1/3	1200	SDB14PH1S	795 ●	SDB14PH3S	864 ▲
	1/2	1400	SDB14QH1S	818 ●	SDB14QH3S	862 ●
	3/4	1550	SDB14RH1S	903 ●	SDB14RH3S	866 ●
	1	1750	SDB14SH1S	929 ●	SDB14SH3S	900 ●
15	1/4	1000	SDB15MH1S	805 ●	SDB15MH3S	887 ▲
	1/3	1100	SDB15PH1S	824 ●	SDB15PH3S	892 ▲
	1/2	1250	SDB15QH1S	845 ●	SDB15QH3S	891 ●
	3/4	1450	SDB15RH1S	932 ●	SDB15RH3S	894 ●
	1	1600	SDB15SH1S	957 ●	SDB15SH3S	928 ●
16	1/4	900	SDB16MH1S	870 ●	SDB16MH3S	951 ▲
	1/3	1000	SDB16PH1S	890 ●	SDB16PH3S	955 ●
	1/2	1150	SDB16QH1S	909 ●	SDB16QH3S	954 ●
	3/4	1300	SDB16RH1S	1024 ●	SDB16RH3S	955 ●
	1	1450	SDB16SH1S	1059 ●	SDB16SH3S	990 ●
18	1/3	750	SDB18PH1S	962 ●	SDB18PH3S	1028 ◆
	1/2	900	SDB18QH1S	985 ●	SDB18QH3S	1028 ●
	3/4	1,000	SDB18RH1S	980 ●	SDB18RH3S	1035 ●
	1	1,150	SDB18SH1S	1135 ●	SDB18SH3S	1041 ●
	1-1/2	1,300	SDB18TH1S	1225 ●	SDB18TH3S	1066 ●
	2	1,450	SDB18VH1S	1273 ▲	SDB18VH3S	1084 ●
20	1/3	650	SDB20PH1S	1021 ●	SDB20PH3S	1066 ◆
	1/2	800	SDB20QH1S	1072 ●	SDB20QH3S	1066 ●
	3/4	900	SDB20RH1S	1136 ●	SDB20RH3S	1072 ●
	1	1,000	SDB20SH1S	1192 ●	SDB20SH3S	1080 ●
	1-1/2	1,150	SDB20TH1S	1283 ●	SDB20TH3S	1105 ●
	2	1,250	SDB20VH1S	1331 ◆	SDB20VH3S	1122 ●
22	1/3	550	SDB22PH1S	1046 ●	SDB22PH3S	1093 ●
	1/2	650	SDB22QH1S	1099 ●	SDB22QH3S	1093 ●
	3/4	700	SDB22RH1S	1165 ●	SDB22RH3S	1099 ●
	1	800	SDB22SH1S	1222 ●	SDB22SH3S	1107 ●
	1-1/2	900	SDB22TH1S	1315 ●	SDB22TH3S	1133 ●
	2	1,000	SDB22VH1S	1364 ◆	SDB22VH3S	1149 ●
24	1/3	490	SDB24PH1S	1264 ◆	SDB24PH3S	1266 ◆
	1/2	560	SDB24QH1S	1299 ◆	SDB24QH3S	1246 ◆
	3/4	645	SDB24RH1S	1274 ◆	SDB24RH3S	1274 ◆
	1	710	N/A	N/A	SDB24SH3S	1262 ◆
	1-1/2	820	N/A	N/A	SDB24TH3S	1283 ◆
	2	900	N/A	N/A	SDB24VH3S	1303 ◆

Notes:

- List price includes assembled fan, motor & drives mounted, motor prewired (when voltage is specified), UL-705 listing label, disconnect switch, birdscreen.
- Standard single phase motors 1/2 HP & smaller are 115V ONLY 3/4 HP & larger are 115/208-230V Tri Voltage. 1HP, 1-1/2 HP, 2 HP motors come standard with Thermal overload protection.
- Standard three phase motors are 208-230/460 Tri Voltage.
- Standard motor efficiencies meet or exceed US energy efficiency requirements.
- Motors 3HP and larger may ship separate to avoid shipping damage.
- For options and accessories not shown, contact your sales representative for availability and pricing.
- Refer to submittals and catalog for construction specifications and dimensional details.

MODEL SDB *Downblast Belt Drive Centrifugal Roof Exhauster*

Model SDB	Roof Mounting Curb 12" High (2)		Gravity Damper		Damper Motor (Loose)		Automatic Belt Tensioner (Installed)		Curb Cap Adaptor (replace DB with SDB using existing curb)	
	Stock No.	List \$	Stock No.	List \$	Stock No.	List \$	Stock No.	List \$	Stock No.	List \$
6	711216	152 ●	411012 †	33 ●	411611 †	182 ●	100069	135 ●	CCA1816	104 ●
7	711216	152 ●	411012 †	33 ●	411611 †	182 ●	100069	135 ●	CCA1816	104 ●
8	711216	152 ●	411012 †	33 ●	411611 †	182 ●	100069	135 ●	CCA1816	104 ●
10	711216	152 ●	411012 †	33 ●	411611 †	182 ●	100069	135 ●	CCA1816	104 ●
12	711218	184 ●	411014 †	44 ●	411611 †	182 ●	100070	138 ●	CCA2024	106 ●
14	711218	184 ●	411014 †	44 ●	411611 †	182 ●	100070	138 ●	CCA2024	106 ●
15	711222	248 ●	411018 †	49 ●	411611 †	182 ●	100070	138 ●	N/A	N/A
16	711222	248 ●	411018 †	49 ●	411611 †	182 ●	100070	138 ●	N/A	N/A
18	711228	256 ●	411024 †	79 ●	411611 †	182 ●	100072	184 ●	N/A	N/A
20	711228	256 ●	411024 †	79 ●	411611 †	182 ●	100072	184 ●	N/A	N/A
22	711228	256 ●	411024 †	79 ●	411611 †	182 ●	100072	184 ●	N/A	N/A
24	711234	270 ●	411030 †	96 ●	411611 †	182 ●	100072	184 ●	N/A	N/A

Notes:

- Galvanized Curb with wood nailer, insulation, damper shelf, and mitered 3" cant.
- For options & accessories not shown, contact your sales representative for availability and pricing.
- Refer to submittals and catalog for construction specifications and dimensional details.

Ship Schedules:
● Next Day Shipment From Stock
▲ 3 Day Shipment From Stock
◆ 10 Day Shipment

IMPORTANT
Motor Voltage and Phase Must Be Specified on Your Order!

† Ships via parcel carrier (UPS, FedEX, DHL...etc.)

MODEL STXD

**Upblast Direct Drive
Centrifugal Roof & Sidewall Exhauster for
Restaurant and General Applications**



UL 705 Listed (NOT Suitable for Restaurant Applications)

Model STXD	Motor Hp	Fan RPM (Nom.)	115/1/60 (1)		230/1/60 (1)		Roof Mounting Curb 12" High (4)		Gravity Damper (5) ⬆		Damper Motor (Loose) ⬆		Speed Control Switch (Loose) ⬆			
													115/1/60		230/1/60	
			Stock No.	List \$	Stock No.	List \$	Stock No.	List \$	Stock No.	List \$	Stock No.	List \$	Stock No.	List \$	Stock No.	List \$
6	1/10	1650	STXD06CJH1AS	619 ●	STXD06CJH1CS	638 ◆	711216	152 ●	411012	33 ●	411611	182 ●	2727.1	52 ●	3232.1	106 ◆
	1/10	1650	STXD06JH1AS	619 ●	STXD06JH1CS	638 ◆	711216	152 ●	411012	33 ●	411611	182 ●	2727.1	52 ●	3232.1	106 ◆
7	1/10	1650	STXD07JH1AS	631 ●	STXD07JH1CS	651 ◆	711216	152 ●	411012	33 ●	411611	182 ●	2727.1	52 ●	3232.1	106 ◆
8	1/25	1150	STXD08HM1AS	676 ●	N/A	N/A	711216	152 ●	411012	33 ●	411611	182 ●	2727.1	52 ●	N/A	N/A
	1/4	1750	STXD08MH1AS	736 ●	STXD08MH1CS	752 ◆	711216	152 ●	411012	33 ●	411611	182 ●	2727.1	52 ●	3232.1	106 ◆

UL 762 Listed (Suitable for Restaurant Applications)

Model STXD	Motor Hp	Fan RPM (Nom.)	115/1/60 (1a)		230/1/60 (1a)		Roof Mounting Curb				Gravity Damper (5) ⬆		Damper Motor (Loose) ⬆		Speed Control Switch (Loose) ⬆			
							12" High Std. (Non-Restaurant) (4)		18" & 24" High Vented Restaurant Style (4a)						115/1/60		230/1/60	
			Stock No.	List \$	Stock No.	List \$	Stock No.	List \$	Stock No.	List \$	Stock No.	List \$	Stock No.	List \$	Stock No.	List \$	Stock No.	List \$
10	1/4	1150	STXD10RHULMM1AS	985 ●	STXD10RHULMM1CS	997 ◆	711216	152 ●	722416V (24")	240 ●	411012	33 ●	411611	182 ●	2727.1	52 ●	3232.1	106 ◆
	1/3	1700	STXD10RHULPH1AS	1019 ●	STXD10RHULPH1CS	1032 ◆	711216	152 ●	722416V (24")	240 ●	411012	33 ●	411611	182 ●	2727.1	52 ●	3232.1	106 ◆
12	1/4	1150	STXD12RHULMM1AS	1032 ●	STXD12RHULMM1CS	1051 ◆	711218	184 ●	722418V (24")	242 ●	411014	44 ●	411611	182 ●	2727.1	52 ●	3232.1	106 ◆
	1/2	1700	STXD12RHULQH1AS	1070 ●	STXD12RHULQH1CS	1089 ◆	711218	184 ●	722418V (24")	242 ●	411014	44 ●	411611	182 ●	2828.1	116 ●	3232.1	106 ◆
14	1/4	1000	STXD14RHULMM1AS	1075 ◆	STXD14RHULMM1CS	1068 ◆	711218	184 ●	722418V (24")	242 ●	411014	44 ●	411611	182 ●	2727.1	52 ●	3232.1	106 ◆
15	1/2	1150	STXD15RHULQM1AS	1107 ◆	STXD15RHULQM1CS	1127 ◆	711222	248 ●	721822V (18")	248 ●	411018	49 ●	411611	182 ●	2828.1	116 ●	3232.1	106 ◆
16	1/2	1150	STXD16RHULQM1AS	1182 ◆	STXD16RHULQM1CS	1204 ◆	711222	248 ●	721822V (18")	248 ●	411018	49 ●	411611	182 ●	2828.1	116 ●	3232.1	106 ◆

Model STXD	Curb Cap Adaptor (replace TXD with STXD using existing curb)		Wall Mount Adaptor (11)		Birdscreen (12)	
	Stock No.	List \$	Stock No.	List \$	Stock No.	List \$
6	CCA1816	104 ●	400555	55 ●	400248	37 ●
7	CCA1816	104 ●	400555	55 ●	400248	37 ●
8	CCA1816	104 ●	400555	55 ●	400248	37 ●
10	CCA1816	104 ●	400555	55 ●	400248	37 ●
12	CCA2024	106 ●	400557	57 ●	400249	39 ●
14	N/A	N/A -	400557	57 ●	400249	39 ●
15	N/A	N/A -	400559	68 ●	400250	45 ●
16	N/A	N/A -	400559	68 ●	400250	45 ●

For STXD10-16 Only

Model STXD	Hinged Base Kit ⬆ (6)		Metal Grease Box ⬆ (7)		Grease Grabber (Roof Mounting Only) (10)		Grease Grabber (Sidewall Mounting Only) (10)	
	Stock No.	List \$	Stock No.	List \$	Stock No.	List \$	Stock No.	List \$
10	400252	66 ●	90005891-A	90 ●	708971	87 ●	708971W	87 ●
12	400252	66 ●	90005891-A	90 ●	708971	87 ●	708971W	87 ●
14	400252	66 ●	90005891-A	90 ●	708971	87 ●	708971W	87 ●
15	400252	66 ●	90005891-A	90 ●	708971	87 ●	708971W	87 ●
16	400252	66 ●	90005891-A	90 ●	708971	87 ●	708971W	87 ●

Notes:

- List price includes assembled fan, motor prewired, UL-705 listing label, disconnect switch (not mounted or wired).
- 1a. List price includes assembled fan, motor prewired, UL-762 listing, label, disconnect switch (mounted and wired).
- Standard motors are open drip-proof either 115/1/60 or 230/1/60.
- Refer to submittals and catalog for construction specifications and dimensional details.
- Galvanized Curb with wood nailer, insulation, damper shelf, and mitered 3" cant.
- 18" high minimum curb is required for kitchen/grease removal applications - per NFPA 96 code. Self-flashing (non-canted) curb.
- Caution: NFPA 96 code prohibits use of backdraft damper for grease removal applications.
- Hinge kit is loose for field attachment to the fan base and roof curb. NFPA 96 code requires that the fan is hinged for access to regularly clean the fan and duct work for all grease removal applications. Ships loose.
- Grease trough attaches to roof curb below the fan drain fitting. NFPA 96 code requires that some method of grease collection is provided for grease removal applications. Ships loose.
- For options & accessories not shown, contact your sales representative for availability and pricing.
- For roof curb mount only - not for sidewall mount.
- Grease Grabber - trap designed for fast and inexpensive replacement. Grease collects in a container for safe sanitary disposal. Ships loose.
- Wall mount adaptor allows for easy attachment to a wood nailer or angle frame supplied by others. See current submittal for details.
- Ships loose. Do not use for UL762 applications.

MODEL STXB-UL762 *Upblast Belt Drive Centrifugal Roof & Sidewall Exhauster for Restaurant and General Applications*



Model STXB	Motor Hp	RPM	Single Phase ODP		Three Phase ODP	
			Stock No.	List \$	Stock No.	List \$ 208-230-460 V
8	1/4	1550	STXB08RHULML1S	856 ●	STXB08RHULML3S	957 ▲
	1/4	1750	STXB08RHULMM1S	856 ●	STXB08RHULMM3S	957 ▲
	1/4	1950	STXB08RHULMH1S	856 ●	STXB08RHULMH3S	957 ▲
	1/3	2100	STXB08RHULPH1S	873 ●	STXB08RHULPH3S	975 ▲
10	1/4	1600	STXB10RHULMH1S	940 ●	STXB10RHULMH3S	948 ▲
	1/3	1800	STXB10RHULPH1S	957 ●	STXB10RHULPH3S	994 ●
12	1/4	1450	STXB12RHULMH1S	961 ●	STXB12RHULMH3S	1016 ▲
	1/3	1600	STXB12RHULPH1S	981 ●	STXB12RHULPH3S	1016 ▲
	1/2	1800	STXB12RHULQH1S	1024 ●	STXB12RHULQH3S	1086 ●
14	1/4	1050	STXB14RHULMH1S	980 ●	STXB14RHULMH3S	1033 ▲
	1/3	1200	STXB14RHULPH1S	997 ●	STXB14RHULPH3S	1033 ▲
	1/2	1350	STXB14RHULQH1S	1041 ●	STXB14RHULQH3S	1103 ●
	3/4	1550	STXB14RHULRH1S	996 ●	STXB14RHULRH3S	1050 ●
15	1	1700	STXB14RHULSH1S	1014 ●	STXB14RHULSH3S	1050 ●
	1/4	1000	STXB15RHULMH1S	1023 ●	STXB15RHULMH3S	1073 ▲
	1/3	1100	STXB15RHULPH1S	1019 ●	STXB15RHULPH3S	1051 ▲
	1/2	1250	STXB15RHULQH1S	1061 ●	STXB15RHULQH3S	1082 ●
	3/4	1450	STXB15RHULRH1S	1194 ●	STXB15RHULRH3S	1119 ●
16	1	1600	STXB15RHULSH1S	1194 ●	STXB15RHULSH3S	1126 ●
	1/4	900	STXB16RHULMH1S	1082 ●	STXB16RHULMH3S	1136 ●
	1/3	1000	STXB16RHULPH1S	1178 ●	STXB16RHULPH3S	1224 ●
	1/2	1150	STXB16RHULQH1S	1189 ●	STXB16RHULQH3S	1238 ●
	3/4	1300	STXB16RHULRH1S	1285 ●	STXB16RHULRH3S	1270 ●
18	1	1400	STXB16RHULSH1S	1325 ●	STXB16RHULSH3S	1331 ●
	1/3	800	STXB18RHULPH1S	1293 ●	STXB18RHULPH3S	1315 ●
	1/2	900	STXB18RHULQH1S	1319 ●	STXB18RHULQH3S	1342 ●
	3/4	1,050	STXB18RHULRH1S	1423 ●	STXB18RHULRH3S	1380 ●
	1	1,150	STXB18RHULSH1S	1458 ●	STXB18RHULSH3S	1389 ●
	1-1/2	1,300	STXB18RHULTH1S	1532 ●	STXB18RHULTH3S	1412 ●
20	2	1,450	STXB18RHULVH1S	1563 ●	STXB18RHULVH3S	1440 ●
	1/3	650	STXB20RHULPH1S	1483 ▲	STXB20RHULPH3S	1464 ▲
	1/2	800	STXB20RHULQH1S	1513 ▲	STXB20RHULQH3S	1494 ▲
	3/4	900	STXB20RHULRH1S	1621 ▲	STXB20RHULRH3S	1499 ▲
	1	1,000	STXB20RHULSH1S	1682 ▲	STXB20RHULSH3S	1576 ▲
	1-1/2	1,150	STXB20RHULTH1S	1742 ▲	STXB20RHULTH3S	1608 ▲
22	2	1,300	STXB20RHULVH1S	1777 ▲	STXB20RHULVH3S	1640 ▲
	1/3	550	STXB22RHULPH1S	1529 ▲	STXB22RHULPH3S	1508 ▲
	1/2	650	STXB22RHULQH1S	1559 ▲	STXB22RHULQH3S	1539 ▲
	3/4	750	STXB22RHULRH1S	1671 ▲	STXB22RHULRH3S	1544 ▲
	1	800	STXB22RHULSH1S	1732 ▲	STXB22RHULSH3S	1623 ▲
	1-1/2	950	STXB22RHULTH1S	1794 ▲	STXB22RHULTH3S	1656 ▲
24	2	1,050	STXB22RHULVH1S	1830 ▲	STXB22RHULVH3S	1689 ▲
	1/3	495	STXB24RHULPH1S	1779 ◆	STXB24RHULPH3S	1814 ◆
	1/2	565	STXB24RHULQH1S	1820 ◆	STXB24RHULQH3S	1843 ◆
	3/4	650	STXB24RHULRH1S	1923 ◆	STXB24RHULRH3S	1881 ◆
	1	720	STXB24RHULSH1S	1956 ◆	STXB24RHULSH3S	1875 ◆
	1-1/2	820	N/A	N/A	STXB24RHULTH3S	1910 ◆
	2	900	N/A	N/A	STXB24RHULVH3S	1919 ◆

Notes:

- List price includes assembled fan, motor & drives mounted, motor prewired (when voltage is specified), UL-762 listing label and mounted and wired disconnect switch.
- Standard single phase motors 1/2 HP & smaller are 115V ONLY 3/4 HP & larger are 115/208-230V Tri Voltage. 1HP, 1-1/2 HP, 2 HP motors come standard with Thermal overload protection.
- Standard three phase motors are 208-230/460 Tri Voltage.
- Standard motor efficiencies meet or exceed US energy efficiency requirements.
- Motors 3HP and larger may ship separate to avoid shipping damage.
- For options and accessories not shown, contact your sales representative for availability and pricing.
- Refer to submittals and catalog for construction specifications and dimensional details.

IMPORTANT
Motor Voltage and Phase Must Be Specified on Your Order!

Ship Schedules:
● Next Day Shipment From Stock
▲ 3 Day Shipment From Stock
◆ 10 Day Shipment

✦ Ships via parcel carrier (UPS, FedEX, DHL...etc.)

MODEL STXB-UL762

Upblast Belt Drive Centrifugal Roof & Sidewall Exhauster for Restaurant and General Applications

Model STXB	Roof Mounting Curb (2) (4)				Gravity Damper (5) +		Damper Motor (Loose) +		Hinged Base Kit + (6)		Automatic Belt Tensioner (Installed)	
	18" High Vented Restaurant Style (4)		12" High Std (Non-Restaurant) (2)									
	Stock No.	List \$	Stock No.	List \$	Stock No.	List \$	Stock No.	List \$	Stock No.	List \$	Stock No.	List \$
8	721816V	240 ●	711216	152 ●	411012	33 ●	411611	182 ●	400252	66 ●	100069	135 ●
10	721816V	240 ●	711216	152 ●	411012	33 ●	411611	182 ●	400252	66 ●	100069	135 ●
12	721818V	242 ●	711218	184 ●	411014	44 ●	411611	182 ●	400252	66 ●	100070	138 ●
14	721818V	242 ●	711218	184 ●	411014	44 ●	411611	182 ●	400252	66 ●	100070	138 ●
15	721822V	248 ●	711222	248 ●	411018	49 ●	411611	182 ●	400252	66 ●	100070	138 ●
16	721822V	248 ●	711222	248 ●	411018	49 ●	411611	182 ●	400252	66 ●	100070	138 ●
18	721828V	316 ●	711228	256 ●	411024	79 ●	411611	182 ●	400252	66 ●	100072	157 ●
20	721828V	316 ●	711228	256 ●	411024	79 ●	411611	182 ●	400252	66 ●	100072	157 ●
22	721828V	316 ●	711228	256 ●	411024	79 ●	411611	182 ●	400252	66 ●	100072	157 ●
24	721834V	351 ◆	711234	270 ◆	411030	96 ●	411611	182 ●	400252	66 ●	100072	157 ●

Model STXB	Metal Grease Box (7)		Grease Grabber (Roof Mounting Only)		Grease Grabber (Sidewall Mounting Only)		Birdscreen + (10)		Curb Cap Adaptor (replace TXB with STXB using existing curb)		Wall Mount Adaptor (11)	
	Stock No.	List \$	Stock No.	List \$	Stock No.	List \$	Stock No.	List \$	Stock No.	List \$	Stock No.	List \$
8	90005891-A	90 ●	708971	87 ●	708971W	87 ●	400248	37 ●	CCA1816	104 ●	400555	55 ●
10	90005891-A	90 ●	708971	87 ●	708971W	87 ●	400248	37 ●	CCA1816	104 ●	400555	55 ●
12	90005891-A	90 ●	708971	87 ●	708971W	87 ●	400249	39 ●	CCA2024	106 ●	400557	57 ●
14	90005891-A	90 ●	708971	87 ●	708971W	87 ●	400249	39 ●	N/A	N/A ●	400557	57 ●
15	90005891-A	90 ●	708971	87 ●	708971W	87 ●	400250	45 ●	N/A	N/A ●	400559	68 ●
16	90005891-A	90 ●	708971	87 ●	708971W	87 ●	400250	45 ●	N/A	N/A ●	400559	68 ●
18	90005891-B	90 ●	708971	87 ●	708971W	87 ●	400276	46 ●	N/A	N/A	N/A	N/A
20	90005891-B	90 ●	708971	87 ●	708971W	87 ●	400277	64 ●	N/A	N/A	N/A	N/A
22	90005891-B	90 ●	708971	87 ●	708971W	87 ●	400277	64 ●	N/A	N/A	N/A	N/A
24	90005891-A	90 ●	708971	87 ●	708971W	87 ●	400278	65 ◆	N/A	N/A	N/A	N/A

Notes:

- Galvanized Curb with wood nailer, insulation, damper shelf, and mitered 3" cant.
- For options & accessories not shown, contact your sales representative for availability and pricing.
- 18" high minimum curb is required for kitchen/grease removal applications - per NFPA 96 code. Self-flashing (non-canted) curb.
- Caution:** NFPA 96 code prohibits use of backdraft damper for grease removal applications.
- Hinge kit is loose for field attachment to the fan base and roof curb NFPA 96 code requires that the fan is hinged for access to regularly clean the fan and duct work for all grease removal applications.
- Grease trough attaches to roof curb below the fan drain fitting. NFPA 96 code requires that some method of grease collection is provided for grease removal applications.
- Refer to submittals and catalog for construction specifications and dimensional details.
- For roof curb mount only-Not for sidewall mount.
- Ships loose. Do not use for UL762 Applications.
- Wall mount adaptor allows for easy attachment to a wood nailer or angle frame supplied by others. See current submittal for details.

MODEL CWD *Direct Drive Centrifugal Sidewall Exhauster*



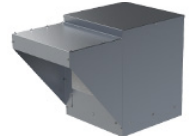
Model CWD	Motor Hp	Motor RPM (Nom.)	115/1/60		230/1/60		Gravity Damper ✦		Damper Motor (Loose) ✦		Speed Control Switch (Not Mounted) ✦			
			Stock No.	List \$	Stock No.	List \$	Stock No.	List \$	Stock No.	List \$	115/1/60		230/1/60	
											Stock No.	List \$	Stock No.	List \$
7	1/25	1550	CWD07HH1AS✦	596 ●	N/A	N/A	411008	31 ●	411611	182 ●	2727.1	52 ●	N/A	N/A
8	1/15	1550	CWD08IH1AS✦	624 ●	N/A	N/A	411011	33 ●	411611	182 ●	2727.1	52 ●	N/A	N/A
9	1/4	1075	CWD09MM1AS	887 ●	CWD09MM1CS	914 ◆	411014	44 ●	411611	182 ●	2727.1	52 ●	3232.1	106 ◆
	1/4	1625	CWD09MH1AS	838 ●	CWD09MH1CS	860 ◆	411014	44 ●	411611	182 ●	2727.1	52 ●	3232.1	106 ◆
10	1/3	1625	CWD10PH1AS	901 ●	CWD10PH1CS	925 ◆	411014	44 ●	411611	182 ●	2727.1	52 ●	3232.1	106 ◆
12	1/4	1075	CWD12MM1AS	1016 ●	CWD12MM1CS	1113 ◆	411014	44 ●	411611	182 ●	2727.1	52 ●	3232.1	106 ◆
14	1/2	1140	CWD14QM1AS	1351 ●	CWD14QM1CS	1386 ◆	411018	49 ●	411611	182 ●	2828.1	116 ●	3232.1	106 ◆

- Notes:
1. List price includes assembled fan, motor prewired, UL-705 listing label, disconnect switch (not mounted or wired), birdscreen.
 2. Standard motors are open drip-proof either 115/1/60 or 230/1/60.
 3. Refer to submittals and catalog for construction specifications and dimensional details.
 4. For options & accessories not shown, contact your sales representative for availability and pricing.

Ship Schedules:
● Next Day Shipment From Stock
▲ 3 Day Shipment From Stock
◆ 10 Day Shipment

✦ Ships via parcel carrier
(UPS, FedEX, DHL...etc.)

MODEL KSFV *Belt Drive Centrifugal Kitchen Supply Fan*



Model KSFV	Motor Hp	RPM Range	Single Phase ODP		Three Phase ODP	
			Stock No.	List \$	Stock No.	List \$
						208-230-460 V
9	1/4	450-600	KSFV09ML1S	986 ●	KSFV09ML3S	1005 ●
		601-850	KSFV09MM1S	968 ●	KSFV09MM3S	988 ●
		851-1025	KSFV09MH1S	970 ●	KSFV09MH3S	989 ●
	1/3	850-1025	KSFV09PH1S	988 ●	KSFV09PH3S	1010 ●
	1/2	920-1275	KSFV09QH1S	1039 ●	KSFV09QH3S	1012 ●
	3/4	1081-1450	KSFV09RH1S	1065 ●	KSFV09RH3S	1016 ●
10	1/4	1254-1600	KSFV09SH1S	1088 ●	KSFV09SH3S	1020 ●
		400-500	KSFV10ML1S	1091 ●	KSFV10ML3S	1126 ●
	1/3	501-675	KSFV10MH1S	1083 ●	KSFV10MH3S	1118 ●
		526-775	KSFV10PH1S	1093 ●	KSFV10PH3S	1131 ●
	1/2	575-750	KSFV10QL1S	1149 ●	KSFV10QL3S	1139 ●
		751-875	KSFV10QH1S	1143 ●	KSFV10QH3S	1133 ●
	3/4	625-850	KSFV10RL1S	1175 ●	KSFV10RL3S	1146 ●
		851-1000	KSFV10RH1S	1170 ●	KSFV10RH3S	1141 ●
	1	725-950	KSFV10SL1S	1198 ●	KSFV10SL3S	1153 ●
		951-1100	KSFV10SH1S	1198 ●	KSFV10SH3S	1153 ●
	1-1/2	800-970	KSFV10TL1S	1284 ●	KSFV10TL3S	1173 ●
		971-1175	KSFV10TM1S	1282 ●	KSFV10TM3S	1170 ●
	2	1176-1225	KSFV10TH1S	1277 ●	KSFV10TH3S	1166 ●
		932-1125	KSFV10VH1S	1337 ●	KSFV10VH3S	1195 ●
12	1/4	350-450	KSFV12ML1S	1159 ●	KSFV12ML3S	1178 ●
		451-600	KSFV12MH1S	1154 ●	KSFV12MH3S	1173 ●
	1/3	451-625	KSFV12PH1S	1172 ●	KSFV12PH3S	1194 ●
		475-600	KSFV12QL1S	1228 ●	KSFV12QL3S	1201 ●
	1/2	601-725	KSFV12QH1S	1215 ●	KSFV12QH3S	1189 ●
		500-650	KSFV12RL1S	1251 ●	KSFV12RL3S	1203 ●
	3/4	651-800	KSFV12RH1S	1243 ●	KSFV12RH3S	1195 ●
		575-750	KSFV12SL1S	1275 ●	KSFV12SL3S	1209 ●
	1	751-875	KSFV12SH1S	1267 ●	KSFV12SH3S	1201 ●
		650-775	KSFV12TL1S	1369 ●	KSFV12TL3S	1234 ●
	1-1/2	776-950	KSFV12TM1S	1364 ●	KSFV12TM3S	1229 ●
		951-1000	KSFV12TH1S	1352 ●	KSFV12TH3S	1217 ●
	2	807-1025	KSFV12VL1S	1414 ●	KSFV12VL3S	1247 ●
		1026-1125	KSFV12VH1S	1409 ●	KSFV12VH3S	1242 ●
15	3/4	375-500	KSFV15RL1S	1295 ●	KSFV15RL3S	1274 ●
		501-625	KSFV15RH1S	1295 ●	KSFV15RH3S	1262 ●
	1	425-550	KSFV15SL1S	1344 ●	KSFV15SL3S	1280 ●
		551-650	KSFV15SM1S	1340 ●	KSFV15SM3S	1276 ●
		651-700	KSFV15SH1S	1335 ●	KSFV15SH3S	1271 ●
	1-1/2	561-700	KSFV15TL1S	1417 ●	KSFV15TL3S	1306 ●
		701-800	KSFV15TH1S	1417 ●	KSFV15TH3S	1305 ●
	2	561-700	KSFV15VL1S	1474 ●	KSFV15VL3S	1330 ●
701-825		KSFV15VH1S	1474 ●	KSFV15VH3S	1329 ●	
18	3/4	360-500	KSFV18RH1S	1589 ●	KSFV18RH3S	1542 ●
	1	401-500	KSFV18SL1S	1612 ●	KSFV18SL3S	1546 ●
		501-550	KSFV18SH1S	1608 ●	KSFV18SH3S	1542 ●
	1-1/2	476-550	KSFV18TL1S	1693 ●	KSFV18TL3S	1558 ●
		551-625	KSFV18TH1S	1690 ●	KSFV18TH3S	1556 ●
	2	450-550	KSFV18VL1S	1760 ●	KSFV18VL3S	1593 ●
		626-725	KSFV18VH1S	1753 ●	KSFV18VH3S	1586 ●

Notes:

- List price includes assembled fan, motor & drives mounted, motor prewired (when voltage is specified), UL-705 listing label, Nema 1 disconnect switch, 1" aluminum filters.
- Standard single phase motors 1/2 HP & smaller are 115V ONLY 3/4 HP & larger are 115/208-230V Tri Voltage. 1HP, 1-1/2 HP, 2 HP motors come standard with Thermal overload protection.
- Standard three phase motors are 208-230/460 Tri Voltage.
- Standard motor efficiencies meet or exceed US energy efficiency requirements.
- Motors 3HP and larger may ship separate to avoid shipping damage.
- For options and accessories not shown, contact your sales representative for availability and pricing.
- Refer to submittals and catalog for construction specifications and dimensional details.
- Intake filter hood ships separate and attaches to fan housing (with fasteners provided) in the field.
- "Stock RPM" is the RPM the unit is set at, at the factory.
- "RPM Range" is the range of RPM available by adjusting the motor pulley in the field.

Ship Schedules:	
●	Next Day Shipment From Stock
▲	3 Day Shipment From Stock
◆	10 Day Shipment

IMPORTANT
Motor Voltage and Phase Must Be Specified on Your Order!

MODEL KSFV *Belt Drive Centrifugal Kitchen Supply Fan*

Model KSFV	Roof Mounting Curb 12" High (1)		Gravity Supply Damper (4) †		Damper Motor (Loose) †	
	Stock No.	List \$	Stock No.	List \$	Stock No.	List \$
9	711222	248 ●	S3GA16CB	95 ●	MP2781	182 ●
10	711232	268 ●	S3GA26CB	233 ●	MP2781	182 ●
12	711232	268 ●	S3GA26CB	233 ●	MP2781	182 ●
15	711232	268 ●	S3GA26CB	233 ●	MP2781	182 ●
18	711240	307 ●	S3GA34CB	205 ●	MP2781	182 ●

Notes:

1. Galvanized Curb with wood nailer, insulation, damper shelf, and mitered 3" cant.
2. For options & accessories not shown, contact your sales representative for availability and pricing.
3. Refer to the catalog and submittal pages for additional mounting details, specifications and dimensions.
4. Damper with counter balance kit included.

MODEL SQB Square Inline Belt Drive Centrifugal Duct Fan



Model SQB	Motor Hp	RPM Range	Single Phase ODP		Three Phase ODP	
			Stock No.	List \$	Stock No.	List \$ 208-230-460 V
7	1/4	1210	SQB07ML1S	1080 ●	SQB07ML3S	1121 ▲
		1530				
	1/4	1450	SQB07MH1S	1080 ●	SQB07MH3S	1121 ▲
1930						
1/3	1690	SQB07PH1S	1097 ●	SQB07PH3S	1121 ▲	
	2110					
8	1/4	1050	SQB08ML1S	1065 ●	SQB08ML3S	1108 ▲
		1575				
	1/4	1425	SQB08MH1S	1065 ●	SQB08MH3S	1108 ▲
		1800				
	1/3	1500	SQB08PH1S	1086 ●	SQB08PH3S	1193 ▲
		2025				
1/2	1850	SQB08QH1S	1144 ●	SQB08QH3S	1195 ●	
	2325					
10	1/4	1050	SQB10MH1S	1061 ●	SQB10MH3S	1158 ▲
		1500				
	1/3	1175	SQB10PH1S	1077 ●	SQB10PH3S	1174 ▲
		1650				
	1/2	1450	SQB10QH1S	1135 ●	SQB10QH3S	1180 ●
		1900				
3/4	1700	SQB10RH1S	1191 ●	SQB10RH3S	1195 ●	
	2175					
12	1/4	900	SQB12MH1S	1190 ●	SQB12MH3S	1302 ▲
		1170				
	1/3	1025	SQB12PH1S	1216 ●	SQB12PH3S	1321 ▲
		1275				
	1/2	1120	SQB12QH1S	1264 ●	SQB12QH3S	1327 ●
		1475				
	3/4	1325	SQB12RH1S	1321 ●	SQB12RH3S	1337 ●
		1675				
1	1525	SQB12SH1S	1344 ●	SQB12SH3S	1345 ●	
	1850					

Notes:

- List price includes assembled fan, motor & drives mounted motor prewired (when voltage is specified), UL-705 listing label, disconnect switch, integral duct connector flanges, access doors.
- Standard single phase motors 1/2 HP & smaller are 115V ONLY 3/4 HP & larger are 115/208-230V Tri Voltage. 1HP, 1-1/2 HP, 2 HP motors come standard with Thermal overload protection.
- Standard three phase motors are 208-230/460 Tri Voltage.
- Standard motor efficiencies meet or exceed US energy efficiency requirements.
- Motors 3HP and larger may ship separate to avoid shipping damage.
- For options and accessories not shown, contact your sales representative for availability and pricing.
- Refer to submittals and catalog for construction specifications and dimensional details.

Ship Schedules:
● Next Day Shipment From Stock
▲ 3 Day Shipment From Stock
◆ 10 Day Shipment

IMPORTANT
Motor Voltage and Phase Must Be Specified on Your Order!

✦ Ships via parcel carrier (UPS, FedEX, DHL...etc.)

MODEL SQB Square Inline Belt Drive Centrifugal Duct Fan



Model SQB	Motor Hp	RPM Range	Single Phase ODP		Three Phase ODP	
			Stock No.	List \$	Stock No.	List \$
						208-230-460 V
15	1/4	770	SQB15MH1S	1313 ●	SQB15MH3S	1417 ▲
		950				1417 ▲
	1/3	825	SQB15PH1S	1334 ●	SQB15PH3S	1440 ▲
		1060				1440 ▲
	1/2	990	SQB15QH1S	1379 ●	SQB15QH3S	1344 ●
		1205				1344 ●
	3/4	1105	SQB15RH1S	1430 ●	SQB15RH3S	1358 ●
		1375				1358 ●
	1	1160	SQB15SH1S	1544 ●	SQB15SH3S	1362 ●
		1530				1362 ●
	1 1/2	1445	SQB15TH1S	1547 ●	SQB15TH3S	1484 ●
		1735				1484 ●
18	1/3	700	SQB18PH1S	1524 ●	SQB18PH3S	1620 ▲
		800				1620 ▲
	1/2	700	SQB18QH1S	1537 ●	SQB18QH3S	1518 ●
		925				1518 ●
	3/4	750	SQB18RH1S	1598 ●	SQB18RH3S	1529 ●
		1025				1529 ●
	1	850	SQB18SH1S	1619 ●	SQB18SH3S	1645 ●
		1150				1645 ●
	1 1/2	975	SQB18TH1S	1625 ●	SQB18TH3S	1652 ●
		1300				1652 ●
	2	1100	SQB18VH1S	1929 ▲	SQB18VH3S	1684 ●
		1425				1684 ●
20	1/3	575	SQB20PH1S	1704 ●	SQB20PH3S	1745 ▲
		610				1745 ▲
	1/2	575	SQB20QH1S	1741 ●	SQB20QH3S	1744 ●
		700				1744 ●
	3/4	600	SQB20RH1S	1799 ●	SQB20RH3S	1753 ●
		800				1753 ●
	1	650	SQB20SH1S	1833 ●	SQB20SH3S	1856 ●
		885				1856 ●
	1 1/2	835	SQB20TH1S	2056 ●	SQB20TH3S	1880 ●
		1010				1880 ●
	2	860	SQB20VH1S	2161 ▲	SQB20VH3S	1919 ●
		1110				1919 ●
24	1/2	530	SQB24QH1S	2226 ●	SQB24QH3S	2187 ●
		580				2187 ●
	3/4	530	SQB24RH1S	2272 ●	SQB24RH3S	2196 ●
		660				2196 ●
	1	570	SQB24SH1S	2272 ●	SQB24SH3S	2200 ●
		725				2200 ●
	1 1/2	660	SQB24TH1S	2509 ●	SQB24TH3S	2355 ●
		830				2355 ●
	2	675	SQB24VH1S	2617 ▲	SQB24VH3S	2384 ●
		910				2384 ●
	3	900	N/A	N/A	SQB24WH3S	2760 ●
		1035				2760 ●

Notes:

1. List price includes assembled fan, motor & drives mounted motor prewired (when voltage is specified), UL-705 listing label, disconnect switch, integral duct connector flanges, access doors.
2. Standard single phase motors 1/2 HP & smaller are 115V ONLY 3/4 HP & larger are 115/208-230V Tri Voltage. 1HP, 1-1/2 HP, 2 HP motors come standard with Thermal overload protection.
3. Standard three phase motors are 208-230/460 Tri Voltage.
4. Standard motor efficiencies meet or exceed US energy efficiency requirements.
5. Motors 3HP and larger may ship separate to avoid shipping damage.
6. For options and accessories not shown, contact your sales representative for availability and pricing.
7. Refer to submittals and catalog for construction specifications and dimensional details.

MODEL SQB *Square Inline Belt Drive Centrifugal Duct Fan*

Model SQB	Motor Safety Guard (Not Mounted) (1)		Gravity Damper		Damper Motor (Loose) †	
	Stock No.	List \$	Stock No.	List \$	Stock No.	List \$
7	MGSQB78	121 ●	411012 †	33 ●	411611	182 ●
8	MGSQB78	121 ●	411012 †	33 ●	411611	182 ●
10	MGSQB1012	121 ●	411014 †	44 ●	411611	182 ●
12	MGSQB1012	121 ●	411018 †	49 ●	411611	182 ●
15	MGSQB15	121 ●	411022 †	61 ●	411611	182 ●
18	MGSQB18	121 ●	411024 †	79 ●	411611	182 ●
20	MGSQB2024	176 ●	411028 †	91 ●	411611	182 ●
24	MGSQB2024	176 ●	611035	112 ●	411611	182 ●

Model SQB	Vibration Isolators † (2)							
	Hanging Style				Floor Mount			
	Rubber † (3)		Spring † (4)		Rubber † (3)		Spring † (4)	
	Stock No.	List \$	Stock No.	List \$	Stock No.	List \$	Stock No.	List \$
7	VHRSQ06-15	241 ●	VHSSQ06-20	285 ●	VFRSQ06-15	167 ●	VFSSQ06-20	502 ●
8	VHRSQ06-15	241 ●	VHSSQ06-20	285 ●	VFRSQ06-15	167 ●	VFSSQ06-20	502 ●
10	VHRSQ06-15	241 ●	VHSSQ06-20	285 ●	VFRSQ06-15	167 ●	VFSSQ06-20	502 ●
12	VHRSQ06-15	241 ●	VHSSQ06-20	285 ●	VFRSQ06-15	167 ●	VFSSQ06-20	502 ●
15	VHRSQ06-15	241 ●	VHSSQ06-20	285 ●	VFRSQ06-15	167 ●	VFSSQ06-20	502 ●
18	VHRSQ18-20	270 ●	VHSSQ06-20	285 ●	VFRSQ18-20	211 ●	VFSSQ06-20	502 ●
20	VHRSQ18-20	270 ●	VHSSQ06-20	285 ●	VFRSQ18-20	211 ●	VFSSQ06-20	502 ●
24	VHRSQ24-30	270 ◆	VHSSQ24	285 ●	VFRSQ24-30	211 ◆	VFSSQ24-30	502 ●

Notes:

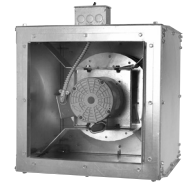
- Guard encloses the sheave, belt and motor - open on one end.
- Vibration isolator kits include set of (4) mounting brackets, isolators and hardware - threaded rod provided by others.
- Rubber/Neoprene isolators are normally preferred for fan sizes through 15 or 18, but may be used for all sizes.
- Spring isolators are normally preferred for fan sizes above 18 or 20, but may be used for all sizes.
- For options & accessories not shown, contact your sales representative for availability and pricing.
- Maximum 3 HP motor - Contact factory for 5 HP construction.

Ship Schedules:
● Next Day Shipment From Stock
▲ 3 Day Shipment From Stock
◆ 10 Day Shipment

IMPORTANT
Motor Voltage and Phase Must Be Specified on Your Order!

† Ships via parcel carrier (UPS, FedEX, DHL...etc.)

MODEL SQD *Square Inline Direct Drive Centrifugal Duct Fan*



Model SQD	Motor Hp	Motor RPM (Nom)	115/1/60		230/1/60		Gravity Damper+		Damper motor (Loose) +		Speed Control Switch (Not Mounted)+			
			Stock No.	List \$	Stock No.	List \$	Stock No.	List \$	Stock No.	List \$	115/1/60		230/1/60	
											Stock No.	List \$	Stock No.	List \$
6	100 Watts	2700	SQD601AS +	450 ●	N/A	N/A	411009	32 ●	411611	182 ●	2727.1	52 ●	N/A	N/A
8	1/4	1740	SQD8251AS +	733 ●	SQD8251CS +	721 ◆	411012	33 ●	411611	182 ●	2727.1	52 ●	3232.1	106 ◆
10	1/4	1150	SQD10251AS	787 ▲	SQD10251CS	774 ◆	411014	44 ●	411611	182 ●	2727.1	52 ●	3232.1	106 ◆
	1/2	1710	SQD10501AS	786 ●	SQD10501CS	773 ◆	411014	44 ●	411611	182 ●	2828.1	116 ●	3232.1	106 ◆
12	1/4	1120	SQD12251AS	939 ▲	SQD12251CS	922 ◆	411016	45 ●	411611	182 ●	2727.1	52 ●	3232.1	106 ◆
	1/2	1620	SQD12501AS	957 ●	SQD12501CS	940 ◆	411016	45 ●	411611	182 ●	2828.1	116 ●	3232.1	106 ◆
15	1/2	1060	SQD15501AS	1086 ▲	SQD15501CS	1066 ◆	411020	54 ▲	411611	182 ▲	2828.1	116 ●	3232.1	106 ◆

Model SQD	Vibration Isolators + (5)							
	Hanging Style				Floor Mount			
	Rubber + (6)		Spring + (7)		Rubber + (6)		Spring + (7)	
	Stock No.	List \$	Stock No.	List \$	Stock No.	List \$	Stock No.	List \$
6	VHRSQ06-15	241 ●	VHSSQ06-20	285 ●	VFRSQ06-15	167 ●	VFSSQ06-20	502 ●
8	VHRSQ06-15	241 ●	VHSSQ06-20	285 ●	VFRSQ06-15	167 ●	VFSSQ06-20	502 ●
10	VHRSQ06-15	241 ●	VHSSQ06-20	285 ●	VFRSQ06-15	167 ●	VFSSQ06-20	502 ●
12	VHRSQ06-15	241 ●	VHSSQ06-20	285 ●	VFRSQ06-15	167 ●	VFSSQ06-20	502 ●
15	VHRSQ06-15	241 ▲	VHSSQ06-20	285 ▲	VFRSQ06-15	167 ▲	VFSSQ06-20	502 ▲

Notes:

- List price includes assembled fan, motor prewired, UL-705 listing label, disconnect switch (not mounted or wired), integral duct connectors, access doors.
- Standard motors are totally enclosed either 115/1/60 or 230/1/60 (SQD601AS and SQD81251AS are 115/1/60 only).
- Refer to submittals and catalog for construction specifications and dimensional details.
- For options & accessories not shown, contact your sales representative for availability and pricing.
- Vibration isolator kits include set of (4) mounting brackets, isolators and hardware - threaded rod provided by others.
- Rubber/Neoprene isolators are normally preferred for fan sizes through 15 or 18, but may be used for all sizes.
- Spring isolators are normally preferred for fan sizes above 18 or 20, but may be used for all sizes.

Ship Schedules:
● Next Day Shipment From Stock
▲ 3 Day Shipment From Stock
◆ 10 Day Shipment

IMPORTANT
Motor Voltage and Phase Must Be Specified on Your Order!

+ Ships via parcel carrier (UPS, FedEX, DHL...etc.)

MODEL ARE/ARS

Dome Direct Drive Propeller Exhaust/Supply Roof Fan



Model ARE exhaust	Motor Hp	Motor RPM (Nom.)	115/1/60		230/1/60		Roof Mounting Curb 12" High		Gravity Damper (Exhaust) ↕		Damper Motor (Loose) ↕		Speed Control Switch (Not Mounted) ↕			
			115/1/60		230/1/60								115/1/60		230/1/60	
			Stock No.	List \$	Stock No.	List \$	Stock No.	List \$	Stock No.	List \$	Stock No.	List \$	Stock No.	List \$	Stock No.	List \$
10	1/15	1550	ARE10IH1AS ↕	680 ●	N/A	N/A	711218	184 ●	411014	44 ●	411611	182 ●	2727.1	52 ●	N/A	N/A
12	1/4	1075	ARE12MM1AS	818 ◆	ARE12MM1CS	818 ◆	611222	199 ◆	411018	49 ◆	411611	182 ◆	2727.1	52 ◆	3232.1	106 ◆
	1/4	1625	ARE12MH1AS	834 ●	ARE12MH1CS	834 ◆	611222	199 ●	411018	49 ●	411611	182 ●	2727.1	52 ●	3232.1	106 ◆
16	1/4	1075	ARE16MM1AS	952 ◆	ARE16MM1CS	952 ◆	92612221	259 ◆	411022	61 ◆	411611	182 ◆	2727.1	52 ●	3232.1	106 ◆
	1/3	1625	ARE16PH1AS	986 ●	ARE16PH1CS	986 ◆	92612221	259 ●	411022	61 ●	411611	182 ●	2727.1	52 ●	3232.1	106 ◆
20	1/4	1075	ARE20MM1AS	1247 ◆	ARE20MM1CS	1247 ◆	93012221	273 ◆	411026	79 ◆	411611	182 ◆	2727.1	52 ◆	3232.1	106 ◆

Model ARS supply	Motor Hp	Motor RPM (Nom.)	115/1/60		230/1/60		Roof Mounting Curb 12" High		Gravity Damper (Supply) ↕		Damper Motor (Loose) ↕		Speed Control Switch (Not Mounted) ↕			
			115/1/60		230/1/60								115/1/60		230/1/60	
			Stock No.	List \$	Stock No.	List \$	Stock No.	List \$	Stock No.	List \$	Stock No.	List \$	Stock No.	List \$	Stock No.	List \$
10	1/15	1550	ARS10IH1AS ↕	680 ◆	N/A	N/A	711218	184 ◆	S3GA12CB	81 ◆	MP2781	182 ◆	2727.1	52 ◆	N/A	N/A
12	1/4	1075	ARS12MM1AS	818 ◆	ARS12MM1CS	818 ◆	611222	199 ◆	S3GA16CB	95 ◆	MP2781	182 ◆	2727.1	52 ◆	3232.1	106 ◆
	1/4	1625	ARS12MH1AS	834 ◆	ARS12MH1CS	834 ◆	611222	199 ◆	S3GA16CB	95 ◆	MP2781	182 ◆	2727.1	52 ◆	3232.1	106 ◆
16	1/4	1075	ARS16MM1AS	952 ◆	ARS16MM1CS	952 ◆	92612221	259 ◆	S3GA20CB	144 ◆	MP2781	182 ◆	2727.1	52 ◆	3232.1	106 ◆
	1/3	1625	ARS16PH1AS	986 ◆	ARS16PH1CS	986 ◆	92612221	259 ◆	S3GA20CB	144 ◆	MP2781	182 ◆	2727.1	52 ◆	3232.1	106 ◆
20	1/4	1075	ARS20MM1AS	1247 ◆	ARS20MM1CS	1247 ◆	93012221	273 ◆	S3GA24CB	210 ◆	MP2781	182 ◆	2727.1	52 ◆	3232.1	106 ◆

- Notes:
1. List price includes assembled fan, motor prewired, UL-705 listing label, disconnect switch (not mounted or wired).
 2. Standard motors are open drip-proof either 115/1/60 or 230/1/60.
 3. Refer to submittals and catalog for construction specifications and dimensional details.
 4. Galvanized Curb with wood nailer, insulation, damper shelf, and mitered 3" cant.
 5. For options & accessories not shown, contact your sales representative for availability and pricing.
 6. Fans are not reversible.

MODEL GED Sidewall Direct Drive Propeller Fan



Model GED	Motor Hp	Motor RPM (Nom.)	115/1/60 (1)		Wall Housing Pack Assembled Fan/Wall Housing/Gravity Damper/Guard (Add to fan price) (2)		Wall Housing Pack Assembled Fan/Wall Housing/Motorized Damper/Guard (Add to fan price) (3)		Gravity Damper (Not Mounted) †		Damper Motor (Loose) †		Speed Control Switch (Not Mounted) †	
			Stock No.	List \$	Stock No.	List \$	Stock No.	List \$	Stock No.	List \$	Stock No.	List \$	Stock No.	List \$
10	1/10	1550	GED10JH1AS †	376 ●	WHPGED1012	313 ●	WHPGED1012M	563 ●	EAS12	68 ●	EAS1232MTR	184 ●	2727.1	52 ●
12	1/10	1550	GED12JH1AS †	377 ●	WHPGED1012	313 ●	WHPGED1012M	563 ●	EAS12	68 ●	EAS1232MTR	184 ●	2727.1	52 ●
	1/4	1625	GED12MH1AS †	415 ●	WHPGED1012	313 ●	WHPGED1012M	563 ●	EAS12	68 ●	EAS1232MTR	184 ●	2727.1	52 ●
14	1/4	1625	GED14MH1AS †	436 ●	WHPGED1416	347 ●	WHPGED1416M	597 ●	EAS16	82 ●	EAS1232MTR	184 ●	2727.1	52 ●
	1/2	1625	GED14QH1AS †	501 ●	WHPGED1416	347 ●	WHPGED1416M	597 ●	EAS16	82 ●	EAS1232MTR	184 ●	2828.1	116 ●
16	1/4	1075	GED16MM1AS †	474 ●	WHPGED1416	347 ●	WHPGED1416M	597 ●	EAS16	82 ●	EAS1232MTR	184 ●	2727.1	52 ●
	1/3	1625	GED16PH1AS †	560 ●	WHPGED1416	347 ●	WHPGED1416M	597 ●	EAS16	82 ●	EAS1232MTR	184 ●	2727.1	52 ●
18	1/4	1075	GED18MM1AS	522 ●	WHPGED1820	390 ●	WHPGED1820M	640 ●	EAS20	124 ●	EAS1232MTR	184 ●	2727.1	52 ●
	1/4	1625	GED18MH1AS	502 ●	WHPGED1820	390 ●	WHPGED1820M	640 ●	EAS20	124 ●	EAS1232MTR	184 ●	2727.1	52 ●
	1/2	1625	GED18QH1AS	588 ●	WHPGED1820	390 ●	WHPGED1820M	640 ●	EAS20	124 ●	EAS1232MTR	184 ●	2828.1	116 ●
20	1/4	1075	GED20MM1AS	565 ●	WHPGED1820	390 ●	WHPGED1820M	640 ●	EAS20	124 ●	EAS1232MTR	184 ●	2727.1	52 ●
	1/2	1625	GED20QH1AS	596 ●	WHPGED1820	390 ●	WHPGED1820M	640 ●	EAS20	124 ●	EAS1232MTR	184 ●	2828.1	116 ●

Electrical Disconnect Switches † (6)(7) Nonfusible Type (Ship loose for field installation)				
ENCLOSURE	MAXIMUM MOTOR HP			
	SINGLE PHASE	STOCK #	MAX. HP	LIST \$
OPEN NEMA 1	115/208-230	2502.10	2	49 ●
RAINTIGHT NEMA 3	115/208-230	90012002R1	2	112 ●

Notes:

- List price includes assembled fan, motor, panel with guard only, UL listing label.
- List price includes assembled wall housing, gravity damper and fan/motor/panel with guard. Add this to the list price of the fan from column (1) above.
- List price includes assembled wall sleeve, motorized damper and fan/motor panel with guard. Add this to the list price of the fan from column (1) above.
- Standard motors are open drip-proof 115/1/60.
- Refer to submittals and catalog for construction specifications and dimensional details.
- For options & accessories not shown, contact your sales representative for availability and pricing.
- Use the raintight switches whenever the switch is located out doors or in a potentially wet location.
- Open style enclosures are suitable only for indoor locations and where the switch is protected from water and dirt.
- For supply fan Model GSD availability and pricing, contact your sales representative.

Ship Schedules:
● Next Day Shipment From Stock
▲ 3 Day Shipment From Stock
◆ 10 Day Shipment

IMPORTANT
Motor Voltage and Phase Must Be Specified on Your Order!

† Ships via parcel carrier (UPS, FedEX, DHL...etc.)

MODEL LCE Sidewall Belt Drive Exhaust Propeller Fan



Model LCE	Motor Hp	RPM	Single Phase ODP		Three Phase ODP	
			Stock No.	List \$	Stock No.	List \$
						208-230-460 V
20	1/4	955	LCE20MH1S	587 ●	LCE20MH3S	631 ●
	1/3	1050	LCE20PH1S	604 ●	LCE20PH3S	627 ●
	1/2	1180	LCE20QH1S	654 ●	LCE20QH3S	627 ●
	3/4	1350	LCE20RH1S	720 ●	LCE20RH3S	645 ●
24	1/4	600	LCE24MH1S	808 ●	LCE24MH3S	842 ●
	1/3	660	LCE24PH1S	820 ●	LCE24PH3S	866 ●
	1/2	760	LCE24QH1S	871 ●	LCE24QH3S	867 ●
	3/4	875	LCE24RH1S	895 ●	LCE24RH3S	872 ●
	1	950	LCE24SH1S	964 ●	LCE24SH3S	874 ●
	1 1/2	1100	LCE24TH1S	1044 ●	LCE24TH3S	891 ●
30	1/4	450	LCE30MH1S	847 ●	LCE30MH3S	877 ●
	1/3	495	LCE30PH1S	866 ●	LCE30PH3S	901 ●
	1/2	565	LCE30QH1S	901 ●	LCE30QH3S	842 ●
	3/4	650	LCE30RH1S	925 ●	LCE30RH3S	854 ●
	1	715	LCE30SH1S	1008 ●	LCE30SH3S	856 ●
	1 1/2	815	LCE30TH1S	1080 ●	LCE30TH3S	923 ●
36	1/3	390	LCE36PH1S	932 ●	LCE36PH3S	918 ●
	1/2	440	LCE36QH1S	960 ●	LCE36QH3S	892 ●
	3/4	505	LCE36RH1S	973 ●	LCE36RH3S	907 ●
	1	555	LCE36SH1S	985 ●	LCE36SH3S	909 ●
	1 1/2	635	LCE36TH1S	1067 ●	LCE36TH3S	920 ●
	2	695	LCE36VH1S	1209 ●	LCE36VH3S	945 ●
42	1/3	305	LCE42PH1S	980 ●	LCE42PH3S	1091 ●
	1/2	345	LCE42QH1S	996 ●	LCE42QH3S	1080 ●
	3/4	395	LCE42RH1S	1103 ●	LCE42RH3S	1090 ●
	1	435	LCE42SH1S	1152 ●	LCE42SH3S	1069 ●
	1 1/2	500	LCE42TH1S	1227 ●	LCE42TH3S	1065 ●
	2	550	LCE42VH1S	1326 ●	LCE42VH3S	1103 ●
48	1/2	290	LCE48QH1S	1009 ●	LCE48QH3S	1115 ●
	3/4	330	LCE48RH1S	1086 ●	LCE48RH3S	1120 ●
	1	365	LCE48SH1S	1173 ●	LCE48SH3S	1118 ●
	1 1/2	415	LCE48TH1S	1251 ●	LCE48TH3S	1114 ●
	2	455	LCE48VH1S	1326 ●	LCE48VH3S	1152 ●
54	3/4	270	LCE54RH1S	1547 ◆	LCE54RH3S	1389 ◆
	1	295	LCE54SH1S	1568 ◆	LCE54SH3S	1380 ◆
	1 1/2	340	LCE54TH1S	1614 ◆	LCE54TH3S	1382 ◆
	2	370	LCE54VH1S	1685 ◆	LCE54VH3S	1413 ◆
	3	425	N/A	N/A	LCE54WH3S	1895 ◆
60	1	265	LCE60SH1S	1548 ◆	LCE60SH3S	1518 ◆
	1 1/2	300	LCE60TH1S	1706 ◆	LCE60TH3S	1461 ◆
	2	335	LCE60VH1S	1785 ◆	LCE60VH3S	1483 ◆
	3	380	N/A	N/A	LCE60WH3S	1860 ◆

Notes:

- List price includes assembled fan, motor & drives mounted motor prewired (when voltage is specified), UL-705 listing label.
- Standard single phase motors 1/2 HP & smaller are 115V ONLY 3/4 HP & larger are 115/208-230V Tri Voltage. 1HP, 1-1/2 HP, 2 HP motors come standard with Thermal overload protection.
- Standard three phase motors are 208-230/460.
- Standard motor efficiencies meet or exceed US energy efficiency requirements.
- For options and accessories not shown, contact your sales representative for availability and pricing.
- Refer to submittals and catalog for construction specifications and dimensional details.

Group C Freight Policy:
 = non-freight policy

Ship Schedules:	
●	Next Day Shipment From Stock
▲	3 Day Shipment From Stock
◆	10 Day Shipment

MODEL LCE *Sidewall Belt Drive Propeller Fan*

Model LCE	Wall Housing Pack - Exhaust Assembled Fan/Sleeve/Gravity Damper/Guard (Add to fan price) (1)		Wall Housing Pack - Exhaust Assembled Fan/Wall Housing/Motorized Damper/Guard (Add to fan price) (2)		Gravity Damper (Not Mounted) Exhaust Only		Damper Motor (Loose) ⬆	
	Stock No.	List \$	Stock No.	List \$	Stock No.	List \$	Stock No.	List \$
20	WHPLCE20	456 ●	WHPLCE20M	708 ▲	EAS20 ⬆	124 ●	EAS1232MTR	184 ●
24	WHPLCE24	545 ●	WHPLCE24M	794 ▲	EAS26 ⬆	139 ●	EAS1232MTR	184 ●
30	WHPLCE30	595 ●	WHPLCE30M	844 ▲	EAS32 ⬆	167 ●	EAS1232MTR	184 ●
36	WHPLCE36	783 ●	WHPLCE36M	1093 ▲	EAS38	229 ●	EAS3850MTR	243 ●
42	WHPLCE42	986 ●	WHPLCE42M	1297 ▲	EAS44	317 ●	EAS3850MTR	243 ●
48	WHPLCE48	1079 ●	WHPLCE48M	1387 ▲	EAS50	365 ●	EAS3850MTR	243 ●
54	WHPLCE54	1557 ◆	WHPLCE54M	1805 ◆	S3GA56	469 ◆	MA220	243 ◆
60	WHPLCE60	1744 ◆	WHPLCE60M	1989 ◆	S3GA62	560 ◆	MA220	243 ◆

Model LCE	Rainhood (Exhaust) (7)		Rainhood Birdscreen (Exhaust)	
	Stock No.	List \$	Stock No.	List \$
20	5520.8.20KDS	176 ●	5521.5.20RHS	143 ●
24	5520.8.24KDS	224 ●	5521.5.24RHS	153 ●
30	5520.8.30KDS	252 ●	5521.5.30RHS	162 ●
36	5520.8.36KDS	293 ●	5521.5.36RHS	165 ●
42	5520.8.42KDS	336 ●	5521.5.42RHS	178 ●
48	5520.8.48KDS	409 ●	5521.5.48RHS	250 ●
54	5520.8.54KDS	591 ◆	5521.5.54RHS	289 ◆
60	5520.8.60KDS	811 ◆	5521.5.60RHS	315 ◆

Electrical Disconnect Switches ⬆ (5)(6) Nonfusible Type (Ship loose for field installation)								
ENCLOSURE	MAXIMUM MOTOR HP							
	SINGLE PHASE	STOCK #	MAX. HP	LIST \$	THREE PHASE	STOCK #	MAX. HP	LIST \$
OPEN NEMA 1	115/208-230	2502.10	2	48 ●	208-230/460	2503.20	7-1/2 & 10	80 ●
RAINTIGHT NEMA 3	115/208-230	90012002R1	2	112 ●	208-230/460	90012002R	7-1/2 & 10	112 ●

Notes:

- List price includes assembled wall sleeve, gravity damper and fan/motor panel with guard. Add this to the list price of the fan with motor from previous page.
- List price includes assembled wall sleeve, motorized damper and fan/motor panel with guard. Add this to the list price of the fan with motor from previous page.
- For options & accessories not shown, contact your sales representative for availability and pricing.
- Refer to submittals and catalog for construction specifications and dimensional details.
- Use only the raintight switches whenever the switch is located outdoors or in a potentially wet location.
- Open style enclosures are suitable only for indoor locations and where the switch is protected from water and dirt.
- Ship knocked down.

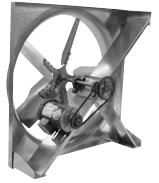
Ship Schedules:
● Next Day Shipment From Stock
▲ 3 Day Shipment From Stock
◆ 10 Day Shipment

IMPORTANT
Motor Voltage and Phase Must Be Specified on Your Order!

⬆ Ships via parcel carrier (UPS, FedEX, DHL...etc.)

MODEL LCS

Sidewall Belt Drive Supply Propeller Fan



Model LCS	Motor Hp	RPM	Single Phase ODP		Three Phase ODP	
			Stock No.	List \$	Stock No.	List \$
						208-230-460 V
20	1/4	955	LCS20MH1S	630 ●	LCS20MH3S	674 ●
	1/3	1050	LCS20PH1S	645 ●	LCS20PH3S	671 ●
	1/2	1180	LCS20QH1S	654 ●	LCS20QH3S	671 ●
	3/4	1350	LCS20RH1S	762 ●	LCS20RH3S	687 ●
24	1/4	600	LCS24MH1S	850 ●	LCS24MH3S	884 ●
	1/3	660	LCS24PH1S	861 ●	LCS24PH3S	907 ●
	1/2	760	LCS24QH1S	913 ●	LCS24QH3S	908 ●
	3/4	875	LCS24RH1S	937 ●	LCS24RH3S	914 ●
	1	950	LCS24SH1S	1006 ●	LCS24SH3S	918 ●
	1 1/2	1100	LCS24TH1S	1087 ●	LCS24TH3S	933 ●
30	1/4	450	LCS30MH1S	889 ●	LCS30MH3S	920 ●
	1/3	495	LCS30PH1S	907 ●	LCS30PH3S	943 ●
	1/2	565	LCS30QH1S	943 ●	LCS30QH3S	884 ●
	3/4	650	LCS30RH1S	967 ●	LCS30RH3S	896 ●
	1	715	LCS30SH1S	1051 ●	LCS30SH3S	898 ●
	1 1/2	815	LCS30TH1S	1122 ●	LCS30TH3S	965 ●
36	1/3	390	LCS36PH1S	974 ●	LCS36PH3S	959 ●
	1/2	440	LCS36QH1S	1003 ●	LCS36QH3S	934 ●
	3/4	505	LCS36RH1S	1014 ●	LCS36RH3S	950 ●
	1	555	LCS36SH1S	1027 ●	LCS36SH3S	952 ●
	1 1/2	635	LCS36TH1S	1110 ●	LCS36TH3S	961 ●
	2	695	LCS36VH1S	1251 ●	LCS36VH3S	987 ●
42	1/3	305	LCS42PH1S	1021 ●	LCS42PH3S	1133 ●
	1/2	345	LCS42QH1S	1039 ●	LCS42QH3S	1122 ●
	3/4	395	LCS42RH1S	1146 ●	LCS42RH3S	1131 ●
	1	435	LCS42SH1S	1194 ●	LCS42SH3S	1112 ●
	1 1/2	500	LCS42TH1S	1269 ●	LCS42TH3S	1108 ●
	2	550	LCS42VH1S	1368 ●	LCS42VH3S	1146 ●
48	1/2	290	LCS48QH1S	1052 ●	LCS48QH3S	1158 ●
	3/4	330	LCS48RH1S	1127 ●	LCS48RH3S	1162 ●
	1	365	LCS48SH1S	1215 ●	LCS48SH3S	1160 ●
	1 1/2	415	LCS48TH1S	1293 ●	LCS48TH3S	1157 ●
	2	455	LCS48VH1S	1368 ●	LCS48VH3S	1194 ●
54	3/4	270	LCS54RH1S	1618 ◆	LCS54RH3S	1461 ◆
	1	295	LCS54SH1S	1636 ◆	LCS54SH3S	1450 ◆
	1 1/2	340	LCS54TH1S	1684 ◆	LCS54TH3S	1452 ◆
	2	370	LCS54VH1S	1755 ◆	LCS54VH3S	1482 ◆
	3	425	N/A	N/A	LCS54WH3S	1965 ◆
60	1	265	LCS60SH1S	1681 ◆	LCS60SH3S	1587 ◆
	1 1/2	300	LCS60TH1S	1843 ◆	LCS60TH3S	1587 ◆
	2	335	LCS60VH1S	1925 ◆	LCS60VH3S	1612 ◆
	3	380	N/A	N/A	LCS60WH3S	2004 ◆

Notes:

- List price includes assembled fan, motor & drives mounted motor prewired (when voltage is specified), UL-705 listing label.
- Standard single phase motors 1/2 HP & smaller are 115V ONLY 3/4 HP & larger are 115/208-230V Tri Voltage. 1HP, 1-1/2 HP, 2 HP motors come standard with Thermal overload protection.
- Standard three phase motors are 208-230/460.
- Standard motor efficiencies meet or exceed US energy efficiency requirements.
- For options and accessories not shown, contact your sales representative for availability and pricing.
- Refer to submittals and catalog for construction specifications and dimensional details.

Group C Freight Policy:
 = non-freight policy

Ship Schedules:

- Next Day Shipment From Stock
- ▲ 3 Day Shipment From Stock
- ◆ 10 Day Shipment

MODEL LCS Sidewall Belt Drive Propeller Fan

Model LCS	Wall Housing Pack - Supply Assembled Fan/Sleeve/Gravity Damper/Guard (Add to fan price) (3)		Wall Housing Pack - Supply Assembled Fan/Wall Housing/Motorized Damper/Guard (Add to fan price) (2)		Gravity Damper (Not Mounted) Supply Only		Damper Motor (Loose) ✦	
	Stock No.	List \$	Stock No.	List \$	Stock No.	List \$	Stock No.	List \$
20	WHPLCS20	456 ●	WHPLCS20M	708 ▲	S3GA20RF ✦	124 ●	MP2781	182 ●
24	WHPLCS24	545 ●	WHPLCS24M	794 ▲	S3GA26RF ✦	139 ●	MP2781	182 ●
30	WHPLCS30	595 ●	WHPLCS30M	844 ▲	S3GA32RF ✦	167 ●	MP2781	182 ●
36	WHPLCS36	783 ●	WHPLCS36M	1093 ▲	S3GA38RF	229 ●	MA220	243 ●
42	WHPLCS42	986 ●	WHPLCS42M	1297 ▲	S3GA44RF	317 ●	MA220	243 ●
48	WHPLCS48	1079 ●	WHPLCS48M	1387 ▲	S3GA50RF	365 ●	MA220	243 ●
54	WHPLCS54	1557 ◆	WHPLCS54M	1805 ◆	S3GA56RF	469 ◆	MA220	243 ◆
60	WHPLCS60	1744 ◆	WHPLCS60M	1989 ◆	S3GA62RF	560 ◆	MA220	243 ◆

Model LCS	Rainhood (Supply) (7)		Rainhood Birdscreen (Supply)	
	Stock No.	List \$	Stock No.	List \$
20	7520.8.20KDS	255 ●	7521.5.20RHS	143 ●
24	7520.8.24KDS	333 ●	7521.5.24RHS	153 ●
30	7520.8.30KDS	379 ●	7521.5.30RHS	162 ●
36	7520.8.36KDS	435 ●	7521.5.36RHS	165 ●
42	7520.8.42KDS	504 ●	7521.5.42RHS	178 ●
48	7520.8.48KDS	613 ●	7521.5.48RHS	250 ●
54	7520.8.54KDS	889 ◆	7521.5.54RHS	289 ◆
60	7520.8.60KDS	1,213 ◆	7521.5.60RHS	315 ◆

Electrical Disconnect Switches ✦ (5)(6) Nonfusible Type (Ship loose for field installation)								
ENCLOSURE	MAXIMUM MOTOR HP							
	SINGLE PHASE	STOCK #	MAX. HP	LIST \$	THREE PHASE	STOCK #	MAX. HP	LIST \$
OPEN NEMA 1	115/208-230	2502.10	2	48 ●	208-230/460	2503.20	7-1/2 & 10	80 ●
RAINTIGHT NEMA 3	115/208-230	90012002R1	2	112 ●	208-230/460	90012002R	7-1/2 & 10	112 ●

Notes:

- List price includes assembled wall sleeve, gravity damper and fan/motor panel with guard. Add this to the list price of the fan with motor from previous page.
- List price includes assembled wall sleeve, motorized damper and fan/motor panel with guard. Add this to the list price of the fan with motor from previous page.
- For options & accessories not shown, contact your sales representative for availability and pricing.
- Refer to submittals and catalog for construction specifications and dimensional details.
- Use only the raintight switches whenever the switch is located outdoors or in a potentially wet location.
- Open style enclosures are suitable only for indoor locations and where the switch is protected from water and dirt.
- Ship knocked down.

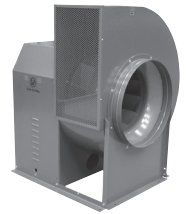
Ship Schedules:
● Next Day Shipment From Stock
▲ 3 Day Shipment From Stock
◆ 10 Day Shipment

IMPORTANT
Motor Voltage and Phase Must Be Specified on Your Order!

✦ Ships via parcel carrier (UPS, FedEX, DHL...etc.)

MODEL CM Belt Driven Utility Vent Set

SWSI Arrangement #10 - Class 1 Construction - Nonoverloading B.I. Wheel



Model CM	Stock Number	HP	ODP-cULus705 (1)		ODP-cULus762 (2)	
			1 PH	3 PH	1 PH	3 PH
			List \$	List \$	List \$	List \$
10	CM10ML___S	1/4	1383 ▲	1327 ▲	1427 ▲	1373 ▲
	CM10MH___S	1/4	1383 ▲	1327 ▲	1427 ▲	1373 ▲
	CM10PH___S	1/3	1397 ▲	1381 ▲	1441 ▲	1425 ▲
	CM10QH___S	1/2	1432 ▲	1481 ▲	1478 ▲	1525 ▲
	CM10RH___S	3/4	1548 ▲	1515 ▲	1593 ▲	1560 ▲
12	CM12MH___S	1/4	1404 ▲	1712 ▲	1449 ▲	1755 ▲
	CM12PH___S	1/3	1394 ▲	1394 ▲	1461 ▲	1439 ▲
	CM12QH___S	1/2	1454 ▲	1500 ▲	1497 ▲	1544 ▲
	CM12RH___S	3/4	1569 ▲	1537 ▲	1612 ▲	1580 ▲
	CM12SH___S	1	1743 ▲	1668 ▲	1786 ▲	1712 ▲
	CM12TH___S	1 1/2	1813 ▲	1680 ▲	1858 ▲	1722 ▲
	CM12VH___S	2	1850 ▲	1729 ▲	1894 ▲	1772 ▲
14	CM14MH___S	1/4	1506 ▲	1499 ▲	1550 ▲	1543 ▲
	CM14PH___S	1/3	1566 ▲	1510 ▲	1609 ▲	1553 ▲
	CM14QH___S	1/2	1579 ▲	1542 ▲	1624 ▲	1586 ▲
	CM14RH___S	3/4	1610 ▲	1578 ▲	1655 ▲	1623 ▲
	CM14SH___S	1	1784 ▲	1710 ▲	1827 ▲	1753 ▲
	CM14TH___S	1 1/2	1856 ▲	1719 ▲	1899 ▲	1765 ▲
	CM14VH___S	2	1957 ▲	1717 ▲	2002 ▲	1761 ▲
	CM14WH___S	3	N/A	1864 ▲	N/A	1909 ▲
16	CM16MH___S	1/4	1652 ◆	1648 ◆	1696 ◆	1692 ◆
	CM16PH___S	1/3	1665 ◆	1722 ◆	1710 ◆	1768 ◆
	CM16QH___S	1/2	1701 ◆	1749 ◆	1746 ◆	1793 ◆
	CM16RH___S	3/4	1817 ◆	1785 ◆	1861 ◆	1828 ◆
	CM16SH___S	1	1990 ◆	1916 ◆	2033 ◆	1959 ◆
	CM16TH___S	1 1/2	2062 ◆	1927 ◆	2105 ◆	1972 ◆
	CM16VH___S	2	2109 ◆	1923 ◆	2153 ◆	1968 ◆
	CM16WH___S	3	N/A	2029 ◆	N/A	2073 ◆
18	CM18MH___S	1/4	1992 ◆	1970 ◆	2034 ◆	2014 ◆
	CM18PH___S	1/3	2112 ◆	1987 ◆	2155 ◆	2031 ◆
	CM18QH___S	1/2	2153 ◆	2005 ◆	2198 ◆	2049 ◆
	CM18RH___S	3/4	2290 ◆	2013 ◆	2335 ◆	2057 ◆
	CM18SH___S	1	2495 ◆	2028 ◆	2538 ◆	2071 ◆
	CM18TH___S	1 1/2	2580 ◆	2039 ◆	2624 ◆	2084 ◆
	CM18VH___S	2	2799 ◆	2063 ◆	2844 ◆	2106 ◆
	CM18WH___S	3	N/A	2413 ◆	N/A	2456 ◆
	CM18XH___S	5	N/A	2642 ◆	N/A	2686 ◆

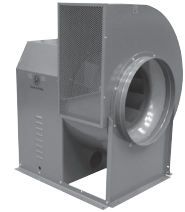
Ship Schedules:
● Next Day Shipment From Stock
▲ 3 Day Shipment From Stock
◆ 10 Day Shipment

1. cULus-705 units: include inlet/L-Flange, weather cover, access door, threaded drain fitting, integral mounting flanges and cULus 705 label. Clockwise rotation, Top Horizontal configuration.

2. cULus-762 units: include inlet/L-Flange, weather cover, access door, threaded drain fitting, integral mounting flanges and cULus 762 label. Clockwise rotation, Upblast configuration.

MODEL CM Belt Driven Utility Vent Set

SWSI Arrangement #10 - Class 1 Construction - Nonoverloading B.I. Wheel



Model CM	Stock Number	HP	ODP-cULus705 (1)		ODP-cULus762 (2)	
			1 PH	3 PH	1 PH	3 PH
			List \$	List \$	List \$	List \$
20	CM20PH___S	1/3	2238 ♦	2349 ♦	2282 ♦	2392 ♦
	CM20QH___S	1/2	2280 ♦	2362 ♦	2324 ♦	2408 ♦
	CM20RH___S	3/4	2418 ♦	2432 ♦	2463 ♦	2475 ♦
	CM20SH___S	1	2623 ♦	2450 ♦	2669 ♦	2494 ♦
	CM20TH___S	1 1/2	2708 ♦	2467 ♦	2752 ♦	2509 ♦
	CM20VH___S	2	2884 ♦	2475 ♦	2928 ♦	2521 ♦
	CM20WH___S	3	N/A	2686 ♦	N/A	2729 ♦
	CM20XH___S	5	N/A	2913 ♦	N/A	2957 ♦
22	CM22PH___S	1/3	2560 ♦	2713 ♦	2604 ♦	2757 ♦
	CM22QH___S	1/2	2602 ♦	2724 ♦	2645 ♦	2767 ♦
	CM22RH___S	3/4	2740 ♦	2742 ♦	2784 ♦	2786 ♦
	CM22SH___S	1	2946 ♦	2749 ♦	2989 ♦	2792 ♦
	CM22TH___S	1 1/2	3028 ♦	2773 ♦	3073 ♦	2816 ♦
	CM22VH___S	2	3296 ♦	2794 ♦	3338 ♦	2839 ♦
	CM22WH___S	3	N/A	3063 ♦	N/A	3106 ♦
	CM22XH___S	5	N/A	3215 ♦	N/A	3259 ♦
	CM22YH___S	7 1/2	N/A	3577 ♦	N/A	3621 ♦
24	CM24QH___S	1/2	2797 ♦	2996 ♦	2839 ♦	3041 ♦
	CM24RH___S	3/4	2928 ♦	3040 ♦	2970 ♦	3082 ♦
	CM24SH___S	1	3282 ♦	3194 ♦	3326 ♦	3238 ♦
	CM24TH___S	1 1/2	3368 ♦	3209 ♦	3413 ♦	3252 ♦
	CM24VH___S	2	3374 ♦	3206 ♦	3419 ♦	3249 ♦
	CM24WH___S	3	N/A	3328 ♦	N/A	3372 ♦
	CM24XH___S	5	N/A	3475 ♦	N/A	3520 ♦
	CM24YH___S	7 1/2	N/A	3690 ♦	N/A	3736 ♦
	CM24ZH___S	10	N/A	3825 ♦	N/A	3868 ♦

1. cULus-705 units: include inlet/L-Flange, weather cover, access door, threaded drain fitting, integral mounting flanges and cULus 705 label. Clockwise rotation, Top Horizontal configuration.
 2. cULus-762 units: include inlet/L-Flange, weather cover, access door, threaded drain fitting, integral mounting flanges and cULus 762 label. Clockwise rotation, Upblast configuration.

How to order:

	Model Number	Motor HP	RPM	Phase	UL	Stock
Example:	CM20	P	H	1	U	S
	CM#	M=1/4 P=1/3 Q=1/2 R=3/4 S=1 T=1 1/2 V=2 W=3 X=5 Y=7 1/2 Z=10	L=Low M=Medium H=High	1 or 3	U=cULus705 R=cULus762	S=Stock

Customer Provided Information

Ship Schedules:
● Next Day Shipment From Stock
▲ 3 Day Shipment From Stock
♦ 10 Day Shipment

IMPORTANT
Motor Voltage and Phase Must Be Specified on Your Order!

✦ Ships via parcel carrier (UPS, FedEX, DHL...etc.)

MODEL CM Belt Driven Utility Vent Set

SWSI Arrangement #10 - Class 1 Construction - Nonoverloading B.I. Wheel



Model CM	Stock Number	HP	ODP-cULus705 (1)		ODP-cULus762 (2)	
			1 PH	3 PH	1 PH	3 PH
			List \$	List \$	List \$	List \$
27	CM27QH___S	1/2	3870 ♦	4028 ♦	3913 ♦	4072 ♦
	CM27RH___S	3/4	3930 ♦	4045 ♦	3971 ♦	4088 ♦
	CM27SH___S	1	4369 ♦	4152 ♦	4412 ♦	4196 ♦
	CM27TH___S	1 1/2	4392 ♦	4161 ♦	4435 ♦	4205 ♦
	CM27VH___S	2	4518 ♦	4172 ♦	4563 ♦	4216 ♦
	CM27WH___S	3	N/A	4437 ♦	N/A	4482 ♦
	CM27XH___S	5	N/A	4742 ♦	N/A	4785 ♦
	CM27YH___S	7 1/2	N/A	5073 ♦	N/A	5116 ♦
	CM27ZH___S	10	N/A	5243 ♦	N/A	5287 ♦
30	CM30RH___S	3/4	4676 ♦	4844 ♦	4718 ♦	4890 ♦
	CM30SH___S	1	4934 ♦	4959 ♦	4976 ♦	5004 ♦
	CM30TH___S	1 1/2	5288 ♦	5011 ♦	5332 ♦	5055 ♦
	CM30VH___S	2	5420 ♦	5149 ♦	5465 ♦	5192 ♦
	CM30WH___S	3	N/A	5271 ♦	N/A	5316 ♦
	CM30XH___S	5	N/A	5612 ♦	N/A	5656 ♦
	CM30YH___S	7 1/2	N/A	5912 ♦	N/A	5956 ♦
	CM30ZH___S	10	N/A	6169 ♦	N/A	6215 ♦
36	CM36SH___S	1	6572 ♦	6740 ♦	6613 ♦	6784 ♦
	CM36TH___S	1 1/2	6609 ♦	6761 ♦	6651 ♦	6804 ♦
	CM36VH___S	2	7102 ♦	6815 ♦	7146 ♦	6859 ♦
	CM36WH___S	3	N/A	6984 ♦	N/A	7028 ♦
	CM36XH___S	5	N/A	7047 ♦	N/A	7090 ♦
	CM36YH___S	7 1/2	N/A	7403 ♦	N/A	7447 ♦
	CM36ZH___S	10	N/A	7555 ♦	N/A	7599 ♦

- cULus-705 units: include inlet/L-Flange, weather cover, access door, threaded drain fitting, integral mounting flanges and cULus 705 label. Clockwise rotation, Top Horizontal configuration.
- cULus-762 units: include inlet/L-Flange, weather cover, access door, threaded drain fitting, integral mounting flanges and cULus 762 label. Clockwise rotation, Upblast configuration.

How to order:

	Model Number	Motor HP	RPM	Phase	UL	Stock
Example:	CM27	Q	H	1	U	S
	CM#	M=1/4 P=1/3 Q=1/2 R=3/4 S=1 T=1 1/2 V=2 W=3 X=5 Y=7 1/2 Z=10	L=Low M=Medium H=High	1 or 3	U=cULus705 R=cULus762	S=Stock

Customer Provided Information

IMPORTANT
Motor Voltage and Phase Must Be Specified on Your Order!

Ship Schedules:
● Next Day Shipment From Stock
▲ 3 Day Shipment From Stock
♦ 10 Day Shipment

✦ Ships via parcel carrier (UPS, FedEX, DHL...etc.)

MODEL CM Belt Driven Utility Vent Set

SWSI Arrangement #10 - Class 1 Construction - Nonoverloading B.I. Wheel

Notes	1		2		3		4		5	
Model CM	U-Flange Inlet		Outlet Flange		Inlet Guard		Outlet Guard (requires Outlet Flange)		Shaft Seal	
	Stock #	List \$	Stock #	List \$	Stock #	List \$	Stock #	List \$	Stock #	List \$
10	101882	139 ▲	104550	118 ▲	104656	136 ▲	104630	\$167 ▲	104120	158 ▲
12	101872	157 ▲	104551	132 ▲	104657	139 ▲	104631	\$167 ▲	104150	158 ▲
14	101873	169 ▲	104552	142 ▲	104658	142 ▲	104632	\$174 ▲	104150	158 ▲
16	101874	179 ◆	104553	151 ◆	104659	157 ◆	104633	\$179 ◆	104150	158 ◆
18	101875	188 ◆	104554	165 ◆	104660	157 ◆	104634	\$182 ◆	104304	192 ◆
20	101876	198 ◆	104555	181 ◆	104661	176 ◆	104635	\$192 ◆	104304	192 ◆
22	101877	203 ◆	104556	195 ◆	104662	181 ◆	104636	\$216 ◆	104304	192 ◆
24	101878	207 ◆	104557	200 ◆	104663	182 ◆	104637	\$220 ◆	104304	192 ◆
27	101879	270 ◆	104558	258 ◆	104664	192 ◆	104638	\$174 ◆	104421	192 ◆
30	101880	279 ◆	104559	267 ◆	104665	198 ◆	104639	\$195 ◆	104421	192 ◆
36	101881	313 ◆	104571	301 ◆	104666	207 ◆	104640	\$221 ◆	104501	206 ◆

Notes	6		7		8		9	
Model CM	Heavy-Duty Gravity Discharge Shutter (requires Outlet Flange)		Grease Trough		Vibration Pads			
	Stock #	List \$	Stock #	List \$	RIS		SPRING	
					Stock #	List \$	Stock #	List \$
10	104643	227 ▲	90005891BVS	127 ▲	104669	144 ▲	104682	462 ▲
12	104644	245 ▲	90005891BVS	127 ▲	104670	148 ▲	104683	467 ▲
14	104645	245 ▲	90005891BVS	127 ▲	104671	150 ▲	104684	468 ▲
16	104646	256 ◆	90005891BVS	127 ◆	104672	164 ◆	104685	478 ◆
18	104647	281 ◆	90005891BVS	127 ◆	104673	165 ◆	104686	479 ◆
20	104648	301 ◆	90005891BVS	127 ◆	104674	166 ◆	104687	480 ◆
22	104649	320 ◆	90005891BVS	127 ◆	104675	242 ◆	104688	481 ◆
24	104650	366 ◆	90005891BVS	127 ◆	104676	244 ◆	104689	492 ◆
27	104651	361 ◆	90005891BVS	127 ◆	104677	247 ◆	104690	496 ◆
30	104652	392 ◆	90005891BVS	127 ◆	104678	249 ◆	104691	500 ◆
36	104653	462 ◆	90005891BVS	127 ◆	104679	251 ◆	104692	501 ◆

Electrical Disconnect Switches ⚡ (10) Nonfusible Type (Ship loose for field installation)									
ENCLOSURE	MAXIMUM MOTOR HP								
	SINGLE PHASE	STOCK #	MAX. HP	LIST \$	THREE PHASE		STOCK #	MAX. HP	LIST \$
OPEN NEMA 1	115/208-230	2502.10	2	48 ●	STD Duty	208-230/460	2503.20	7-1/2 & 10	80 ●
					Heavy-Duty	208-230/460	2503.30	7-1/2 & 15	196 ●
RAINTIGHT NEMA 3	115/208-230	90012002R1	2	112 ●	STD Duty	208-230/460	90012002R	7-1/2 & 10	112 ●
					Heavy-Duty	208-230/460	2503.3R	7-1/2 & 15	402 ●

Ship Schedules:
● Next Day Shipment From Stock
▲ 3 Day Shipment From Stock
◆ 10 Day Shipment

MODEL CM

Notes:

1. U-FLANGE INLET - Fastened to inlet collar. L-flange/slip connector is standard.
2. OUTLET FLANGE - Fastened to the outlet. L-Flange Outlet is required for use of optional discharge shutter or optional outlet screen. The standard unit is stocked without a flange.
3. INLET GUARD - Made out of heavy steel wire rings for lower pressure drop.
4. OUTLET GUARD - Galvanized expanded metal. Not available with discharge shutter. Outlet flange outlet required.
5. SHAFT SEAL - Non-asbestos woven fibrous materials sandwiched between the fan housing and aluminum cover plate. The shaft seal does not make the fan gas tight.
6. DISCHARGE SHUTTERS – Heavy-duty interconnecting blade design opening by air velocity and closed by gravity. Cannot be used for volume control. Cannot be motorized. Discharge shutter requires use of Outlet Flange. Compatible with standard factory positions only.
7. GREASE TROUGH - Metal grease container designed to collect grease residue and avoid drainage onto roof surface.
8. VIBRATION RAILS-RIS - A set of rubber in shear pads that ship loose for field mounting.
9. VIBRATION RAILS-SPRING - A set of spring pads that ship loose for field mounting.
10. DISCONNECT SWITCH - Allows for fan electrical cut off for servicing or inspecting. Use only the raintight switches when the switch is located outdoors or in a potentially wet location.

MODEL RCXII Gravity Relief/Intake Ventilator



Model	Stock No. RCXII	List \$ (1)	Stock No. RCXII-SF	List \$ (1)
6	RCXII06S	114	RCXII06SFS	112
8	RCXII08S	121	RCXII08SFS	119
10	RCXII10S	152	RCXII10SFS	150
12	RCXII12S	164	RCXII12SFS	162
14	RCXII14S	220	RCXII14SFS	219
16	RCXII16S	221	RCXII16SFS	220
18	RCXII18S	277	RCXII18SFS	276
20	RCXII20S	312	RCXII20SFS	311
24	RCXII24S	637		
26	RCXII26S	696		
30	RCXII30S	745		
33	RCXII33S	1053		
36	RCXII36S	1112		

Model RCXII	Roof Mounting Curb 12" High (5)		Backdraft Dampers & Actuator Kits (4)							
			Exhaust/Relief Airflow				Supply/Intake Airflow			
			Gravity (3)		Motorized (2)		Gravity (3)		Motorized (2)	
	Stock No.	List \$	Stock No.	List \$	Stock No.	List \$	Stock No.	List \$	Stock No.	List \$
6	611214	166	2401.0808U	115	2401.M0808U	260	2401.0808D	115	2401.M0808D	275
8	611214	166	2401.0808U	115	2401.M0808U	260	2401.0808D	115	2401.M0808D	275
10	611222	199	2401.1515U	152	2401.M1515U	316	2401.1515D	152	2401.M1515D	313
12	611222	199	2401.1515U	152	2401.M1515U	316	2401.1515D	152	2401.M1515D	313
14	611222	199	2401.1515U	152	2401.M1515U	316	2401.1515D	152	2401.M1515D	313
16	611222	199	2401.1515U	152	2401.M1515U	316	2401.1515D	152	2401.M1515D	313
18	611227	270	2401.2121U	191	2401.M2121U	342	2401.2121D	191	2401.M2121D	365
20	611227	270	2401.2121U	191	2401.M2121U	342	2401.2121D	191	2401.M2121D	365
24	611233	293	2401.2727U	220	2401.M2727U	366	2401.2727D	220	2401.M2727D	387
26	611233	293	2401.2727U	220	2401.M2727U	366	2401.2727D	220	2401.M2727D	387
30	611240	322	2401.3434U	260	2401.M3434U	424	2401.3434D	260	2401.M3434D	451
33	611240	322	2401.3434U	260	2401.M3434U	424	2401.3434D	260	2401.M3434D	451
36	611240	322	2401.3434U	260	2401.M3434U	424	2401.3434D	260	2401.M3434D	451

- Notes:
- List price includes gravity vent suitable for either exhaust/relief or supply/intake airflow and birdscreen.
 - Damper motor/actuator kits are 115/1/60 and ship separate for field assembly.
 - Gravity dampers include a counterbalance kit for field assembly.
 - Damper blades always open in the direction of the airflow-up for relief/exhaust, down for intake/supply
 - Galvanized Curb with wood nailer, insulation, damper shelf, and mitered 3" cant.
 - For options & accessories not shown, contact your sales representative for availability and pricing.
 - Refer to submittals and catalog for construction specifications and dimensional details.
 - RCXII-SF is self flashing, curbs and dampers are not applicable.

Ship Schedules:
● Next Day Shipment From Stock
▲ 3 Day Shipment From Stock
◆ 10 Day Shipment

IMPORTANT
Motor Voltage and Phase Must Be Specified on Your Order!

✦ Ships via parcel carrier (UPS, FedEX, DHL...etc.)

MODEL AF/FF

Ceiling/Bathroom Fans

MODEL FFC

Inline Cabinet Fans



Model AF/FF & Stock No.	List \$	Prepaid Ship
FF50 + ●	\$69.00 ●	A
AF80 + ●	\$151.00 ●	A
FF100 + ●	\$218.00 ●	A
FF150 + ●	\$234.00 ●	A
FF200 + ●	\$280.00 ●	A
FF250 + ●	\$294.00 ●	B
FF300 + ●	\$304.00 ●	B
FF400 + ●	\$470.00 ●	B
FF500 + ●	\$519.00 ●	B
FF700 + ●	\$570.00 ●	B
FF900 + ●	\$670.00 ●	B
FF1500 + ●	\$819.00 ●	B

Model FFC & Stock No.	List \$	Pre-paid Ship
FFC100 + ●	\$219.00 ●	A
FFC150 + ●	\$237.00 ●	A
FFC200 + ●	\$301.00 ●	A
FFC250 + ●	\$305.00 ●	B
FFC300 + ●	\$309.00 ●	B
FFC400 + ●	\$526.00 ●	B
FFC500 + ●	\$571.00 ●	B
FFC700 + ●	\$605.00 ●	B
FFC900 + ●	\$706.00 ●	B
FFC1500 + ●	\$856.00 ●	B
FFC2000	\$1,096.00 ●	B
FFC3500	\$1,745.00 ●	B

- Notes:
1. Refer to submittals and catalog for construction specifications and dimensional details.
 2. For options & accessories not shown, contact your sales representative for availability and pricing.
 3. Model FF: (A) List price includes 120/1/60 motor prewired to J-box, insulated cabinet, integral duct connector with backdraft damper, white inlet grill, UL/CUL listing label, UPS packaging.
(B) Unit is for ceiling mount - right angle discharge and may be converted to inline discharge using inline adaptor accessory.
 4. Models FFC100 thru FFC2000: List price includes 120/1/60 motor prewired to J-box non-insulated cabinet, integral duct connectors with backdraft damper, UL/CUL listing label, UPS packaging (excludes FFC2000).
 5. Model FFC3500: List price includes 240/1/60 motor prewired to J-box non-insulated cabinet, integral duct connectors with backdraft damper, cULus listing label

IMPORTANT
Motor Voltage and Phase Must
Be Specified on Your Order!

Ship Schedules:
● Next Day Shipment From Stock
▲ 3 Day Shipment From Stock
◆ 10 Day Shipment

MODEL FF & FFC ACCESSORY PRICE LIST

See accessory note page for full description of accessories

FF CEILING MOUNT							FFC IN-LINE/CABINET							
Accessories	FF50 AF80	FF100 FF150	FF200 FF250 FF300	FF400 FF500 FF700	FF900	FF1500	FFC100 FFC150	FFC200 FFC250 FFC300	FFC400 FFC500 FFC700	FFC900	FFC1500	FFC2000	FFC3500	
Speed Control														
2727.1 5 Amp (120V) ●	52	52	52	52	52	52	52	52	52	52	52			
2828.1 10 Amp (120V) ●												116		
3232.1 6 Amp (240V) ◆													106	
Roof Caps														
437 ◆				202					202					
634 ●		55	55				55	55						
636 ●	30													
Wall Caps														
441 ◆				127					127					
613 ◆				122	122	122				122	122			
641 ●		118					118							
642 ◆	32													
643 ●			111					111						
In-Line Adaptors														
961L ◆		33												
981L ◆			39											
982L ◆				46										
983L ◆					57	57								
UL Radiation Dampers														
RD80AF ◆	145*													
RD1 ◆		153	153											
RD2 ◆				201										
RD3 ◆					260	260								
Metal Grill Kit														
G102 ◆												105		
G103 ◆													107	
MG1 ●		46	46											
Duct Transitions														
423 ●				87					87					
T81212 ●					88	88				88	88			
Damper Kits														
D100 ●												32		
D101 ●													36	
Vibration Dampening Hangers (4)														
V102 (4) ●	Not Typically Used For Ceiling Mount						37	37	37	37				
V104 (4) ●	Not Typically Used For Ceiling Mount						122	122	122	122	122	122		

*For AF80 Only

FF & FFC ACCESSORY NOTES

ROOF CAPS

- MODEL 437** High capacity design up to 1200 CFM, Birdscreen, steel housing, black epoxy finish.
- MODEL 634** For 3 1/4 X 10" or up to 8" round duct, built in backdraft damper and birdscreen, baked enamel.
- MODEL 636** Sloped roof cap. For 3" or 4" round duct, backdraft damper and birdscreen. Steel, black epoxy.

WALL CAPS

- MODEL 441** Steel with aluminum louvers. For 10" round duct.
- MODEL 613** Aluminum natural finish. Built in backdraft damper and birdscreen. For 12" round duct.
- MODEL 641** Same as 613, except for 6" round duct.
- MODEL 642** Aluminum natural finish, built in backdraft damper. For 3" or 4" round duct. 4" to 3" transition included.
- MODEL 643** Same as 613, except for 8" round duct.

IN-LINE ADAPTORS

- MODEL 961L** Galvanized steel, 6" round duct intake.
- MODEL 981L** Galvanized steel, 8" round duct intake.
- MODEL 982L** Galvanized steel, 4 1/2 X 12" duct intake.
- MODEL 983L** Galvanized steel, 8 X 12" duct intake.

RADIATION DAMPERS

- MODEL RD80AF** UL rated, 1,2, and 3 hour rated. Floor-ceiling and roof-ceiling constructions, galvanized steel. High temperature, non-asbestos, reinforced fiber thermal fabric. 165° fusible link. Stainless steel closure springs 10-1/8" x 9-3/8".
- MODEL RD1** UL rated, 4 hour ceiling radiation dampers, Galvanized steel. High temperature, non-asbestos, reinforced fiber thermal fabric. 165° fusible link. Stainless steel negator-type closure spring 12 1/4 X 12 1/4".
- MODEL RD2** Same as RD 1, except 21-1/2 X 21-1/4".
- MODEL RD3** Same as RD 1, except 22 X 18".

METAL GRILL KIT

- MODEL MG1, G102 & G103** White enamel painted steel. Mounting screws included.

DUCT TRANSITION

- MODEL 423** Galvanized steel. Allows for easy transition to round ducting. 4-1/2 X 18-1/2" to 10" round.
- MODEL T81212** Same as Model 423, except 8 x 12" to 12" round.

DAMPER KITS

- MODEL D100 & D101** Twin damper flaps and mounting hardware. Foam cushion and magnetic catch assures quiet backdraft prevention.

VIBRATION DAMPENING HANGERS (For Model FFC)

- MODEL V102** Set of four - includes washers and neoprene grommets. For 3/16"-32 threaded rod (by others).
- MODEL V104** Set of four for each ventilator. Heavy-gauge steel construction with neoprene vibration dampening cushion. Maximum load 75 pounds each. For 3/8" diameter threaded rod (by others).

Damper, Shutters, & Louvers

LIST PRICE BOOK

For use in conjunction with authorized Discount Multiplier Schedule.

ORDER PROCESSING AND SHIPPING SCHEDULES

The following policy applies to products shown on pages 71 thru 77 of this Price Book.

S&P has instituted the following shipping standards in order to better serve our customers. Using these standards you can estimate when your order will ship, however, the shipping schedules will vary based on the availability of inventory. S&P's Customer Service team will notify you in a timely manner if there is a problem with a pending order.

- **Quantities per order are limited** – please check with S&P Customer Service for shipping schedules regarding orders of 5 or more units
- Shipping schedules for Dampers, Shutters, & Louvers are shown as symbols next to the list price for each item. An order's shipping schedule will be based on the longest shipping schedule product on the order. The symbols are:

Ship Schedules:
● Next Day Shipment From Stock
▲ 3 Day Shipment From Stock
◆ 10 Day Shipment

- For Next Day Shipments from Stock the order will ship the next business day after the order is processed and acknowledged by S&P Customer Service. For 3 Day Shipments from Stock the order will ship the 3rd business day after the order is processed and acknowledged by S&P Customer Service. For 10 day Shipments the order will ship the 10th day after the order is processed and acknowledged by S&P Customer Service.
- Orders received on a business day before 12:00 PM Eastern will be processed the same day and will ship based on the criteria outlined in the 3rd bullet point above.
- Orders received on a business day after 12:00 PM Eastern will be processed the following business day and will ship based on the criteria outlined in the 3rd bullet point above.
- Lead times are subject to inventory on hand as well as the approval of open credit, credit card information, or other method of payment having been established.

SHIPPING POINTS

May vary on occasion, but next day stock typically all items ship from Jacksonville, FL USA. Items marked 10 Day shipping time will drop ship from Romulus, MI.

Dampers & Shutters

Ship Schedules:
● Next Day Shipment From Stock
▲ 3 Day Shipment From Stock
◆ 10 Day Shipment



Model 411
Automatic Exhaust Damper
Galvanized Steel Frame & Aluminum Blade

Part ID	Description	Max Velocity (FPM)	Unit Price	Est. Shipping Weight (lbs.)	Motor Option (Ships loose)	Motor Price
411008	8" X 8" AUTO EXHAUST DAMPER	2000	\$31 ●	2	411611	\$182 ●
411009	9" X 9" AUTO EXHAUST DAMPER	2000	\$32 ●	2.5	411611	\$182 ●
411010	10" X 10" AUTO EXHAUST DAMPER	2000	\$32 ●	2.5	411611	\$182 ●
411011	11" X 11" AUTO EXHAUST DAMPER	2000	\$33 ●	3	411611	\$182 ●
411012	12" X 12" AUTO EXHAUST DAMPER	2000	\$33 ●	3.5	411611	\$182 ●
411014	14" X 14" AUTO EXHAUST DAMPER	2000	\$44 ●	4	411611	\$182 ●
411016	16" X 16" AUTO EXHAUST DAMPER	2000	\$45 ●	4	411611	\$182 ●
411018	18" X 18" AUTO EXHAUST DAMPER	2000	\$49 ●	4.5	411611	\$182 ●
411019	19" X 19" AUTO EXHAUST DAMPER	2000	\$53 ●	4.5	411611	\$182 ●
411020	20" X 20" AUTO EXHAUST DAMPER	2000	\$54 ●	5	411611	\$182 ●
411022	22" X 22" AUTO EXHAUST DAMPER	2000	\$70 ●	5	411611	\$182 ●
411024	24" X 24" AUTO EXHAUST DAMPER	2000	\$79 ●	6	411611	\$182 ●
411026	26" X 26" AUTO EXHAUST DAMPER	2000	\$79 ●	7	411611	\$182 ●
411028	28" X 28" AUTO EXHAUST DAMPER	2000	\$91 ●	7.5	411611	\$182 ●
411030	30" X 30" AUTO EXHAUST DAMPER	2000	\$96 ●	8	411611	\$182 ●



Model 611
Automatic Exhaust Damper
Galvanized Steel Frame & Aluminum Blade
Single Panel

Part ID	Description	Max Velocity (FPM)	Unit Price	No. of Panels	Est. Shipping Weight (lbs.)	Motor Option (Ships loose)	Motor Price
611034	34" X 34" AUTO EXHAUST DAMPER	2250	\$112 ●	1	15	411611	\$182 ●
611035	35" X 35" AUTO EXHAUST DAMPER	2250	\$112 ●	1	16	411611	\$182 ●
611036	36" X 36" AUTO EXHAUST DAMPER	2250	\$112 ●	1	17	411611	\$182 ●
611040	40" X 40" AUTO EXHAUST DAMPER	2250	\$146 ●	1	19.5	411611	\$182 ●
611048	48" X 48" AUTO EXHAUST DAMPER	2250	\$185 ●	1	26	411611	\$182 ●



Model 502
Automatic Wall Shutter
Galvanized Steel Frame & Aluminum Blade
Single Panel

Part ID	Description	Max Velocity (FPM)	Unit Price	Est. Shipping Weight (lbs.)
502010	10" X 10" AUTO WALL SHUTTER	2000	\$41 ●	3.5
502012	12" X 12" AUTO WALL SHUTTER	2000	\$46 ●	4
502016	16" X 16" AUTO WALL SHUTTER	2000	\$59 ●	5.5
502020	20" X 20" AUTO WALL SHUTTER	2000	\$69 ●	7
502024	24" X 24" AUTO WALL SHUTTER	2000	\$83 ●	9.5



Model 556
Automatic Wall Shutter
Galvanized Steel Frame & Aluminum Blade
Single or Double Panel

Ship Schedules:
● Next Day Shipment From Stock
▲ 3 Day Shipment From Stock
◆ 10 Day Shipment

Part ID	Description	Max Velocity (FPM)	Unit Price	No. of Panels	Est. Shipping Weight (lbs.)	Motor Option (Ships loose)	Motor Price
556012	12" X 12" AUTO WALL SHUTTER	2500	\$58 ◆	1	4.5	EAS1232MTR	\$184 ●
556016	16" X 16" AUTO WALL SHUTTER	2500	\$71 ◆	1	6.5	EAS1232MTR	\$184 ●
556020	20" X 20" AUTO WALL SHUTTER	2500	\$88 ◆	1	8.5	EAS1232MTR	\$184 ●
556024	24" X 24" AUTO WALL SHUTTER	2500	\$103 ◆	1	11	EAS1232MTR	\$184 ●
556030	30" X 30" AUTO WALL SHUTTER	2500	\$124 ◆	1	15	EAS1232MTR	\$184 ●
556036	36" X 36" AUTO WALL SHUTTER	2500	\$164 ◆	1	19	EAS1232MTR	\$184 ●
556042	42" X 42" AUTO WALL SHUTTER	2500	\$242 ◆	2	29	EAS3850MTR	\$243 ●
556048	48" X 48" AUTO WALL SHUTTER	2500	\$283 ◆	2	35.5	EAS3850MTR	\$243 ●



Model EAS-RF
Automatic Wall Shutter
Aluminum Frame & Blade
Single or Double Panel

Part ID	Description	Max Velocity (FPM)	Unit Price	No. of Panels	Est. Shipping Weight (lbs.)	Motor Option (Ships loose)	Motor Price
EAS12-RF	12" X 12" ALUM WALL SHUTTER REAR FLANGE	2500	\$68 ●	1	4.5	EAS1232MTR	\$184 ●
EAS16-RF	16" X 16" ALUM WALL SHUTTER REAR FLANGE	2500	\$89 ●	1	6.5	EAS1232MTR	\$184 ●
EAS20-RF	20" X 20" ALUM WALL SHUTTER REAR FLANGE	2500	\$104 ●	1	8.5	EAS1232MTR	\$184 ●
EAS24-RF	24" X 24" ALUM WALL SHUTTER REAR FLANGE	2500	\$126 ●	1	11	EAS1232MTR	\$184 ●
EAS30-RF	30" X 30" ALUM WALL SHUTTER REAR FLANGE	2500	\$148 ●	1	15	EAS1232MTR	\$184 ●
EAS36-RF	36" X 36" ALUM WALL SHUTTER REAR FLANGE	2500	\$199 ●	1	19	EAS1232MTR	\$184 ●
EAS42-RF	42" X 42" ALUM WALL SHUTTER REAR FLANGE	2500	\$293 ●	2	23	EAS3850MTR	\$243 ●
EAS48-RF	48" X 48" ALUM WALL SHUTTER REAR FLANGE	2500	\$343 ●	2	27.5	EAS3850MTR	\$243 ●



Model EAS-HDGS
Automatic Wall Shutter
Aluminum Frame & Blade
Single or Double Panel

Part ID	Description	Max Velocity (FPM)	Unit Price	No. of Panels	Est. Shipping Weight (lbs.)
EAS-HDGS12	12" x 12" ALUM WALL SHUTTER (HIGH VELOCITY)	3250	\$101 ◆	1	6
EAS-HDGS16	16" x 16" ALUM WALL SHUTTER (HIGH VELOCITY)	3250	\$134 ◆	1	8
EAS-HDGS20	20" x 20" ALUM WALL SHUTTER (HIGH VELOCITY)	3250	\$164 ◆	1	12
EAS-HDGS24	24" x 24" ALUM WALL SHUTTER (HIGH VELOCITY)	3250	\$201 ◆	1	15
EAS-HDGS30	30" x 30" ALUM WALL SHUTTER (HIGH VELOCITY)	3250	\$246 ◆	1	20
EAS-HDGS36	36" x 36" ALUM WALL SHUTTER (HIGH VELOCITY)	3250	\$322 ◆	1	26
EAS-HDGS42	42" x 42" ALUM WALL SHUTTER (HIGH VELOCITY)	3250	\$494 ◆	2	31
EAS-HDGS48	48" x 48" ALUM WALL SHUTTER (HIGH VELOCITY)	3250	\$584 ◆	2	40



Model FGS
Automatic Wall Shutter
Fiberglass Frame & Blade
Single of Double Panel

Ship Schedules:
● Next Day Shipment From Stock
▲ 3 Day Shipment From Stock
◆ 10 Day Shipment

Part ID	Description	Max Velocity (FPM)	Unit Price	No. of Panels	Est. Shipping Weight (lbs.)
FGS12	12" X 12" FIBERGLASS WALL SHUTTER	2500	\$130 ◆	1	5.5
FGS16	16" X 16" FIBERGLASS WALL SHUTTER	2500	\$167 ◆	1	6
FGS20	20" X 20" FIBERGLASS WALL SHUTTER	2500	\$198 ◆	1	8.5
FGS24	24" X 24" FIBERGLASS WALL SHUTTER	2500	\$237 ◆	1	11
FGS30	30" X 30" FIBERGLASS WALL SHUTTER	2500	\$280 ◆	1	15
FGS36	36" X 36" FIBERGLASS WALL SHUTTER	2500	\$369 ◆	1	20
FGS42	42" X 42" FIBERGLASS WALL SHUTTER	2500	\$552 ◆	2	28
FGS48	48" X 48" FIBERGLASS WALL SHUTTER	2500	\$639 ◆	2	35



Model 304SS
Automatic Wall Shutter
Stainless Steel Frame & Blade

Part ID	Description	Max Velocity (FPM)	Unit Price	No. of Panels	Est. Shipping Weight (lbs.)
304SS12	12" X 12" STAINLESS STEEL WALL SHUTTER	2500	\$227 ◆	1	4.5
304SS16	16" X 16" STAINLESS STEEL WALL SHUTTER	2500	\$266 ◆	1	6
304SS20	20" X 20" STAINLESS STEEL WALL SHUTTER	2500	\$319 ◆	1	8.5
304SS24	24" X 24" STAINLESS STEEL WALL SHUTTER	2500	\$382 ◆	2	11.5
304SS30	30" X 30" STAINLESS STEEL WALL SHUTTER	2500	\$456 ◆	2	16
304SS36	36" X 36" STAINLESS STEEL WALL SHUTTER	2500	\$553 ◆	2	21



Model EASB & EASW
Automatic Wall Shutter
Aluminum Frame & PVC Blade

Part ID	Description	Max Velocity (FPM)	Unit Price	No. of Panels	Est. Shipping Weight (lbs.)
EASB36	36" X 36" BLACK PVC WALL SHUTTER	1500	\$187 ◆	2	12
EASB39	39" X 39" BLACK PVC WALL SHUTTER	1500	\$216 ◆	2	13.5
EASB51	51" X 51" BLACK PVC WALL SHUTTER	1500	\$333 ◆	3	19.5
EASB54	54" X 54" BLACK PVC WALL SHUTTER	1500	\$351 ◆	3	28
EASW36	36" X 36" WHITE PVC WALL SHUTTER	1500	\$187 ◆	2	12
EASW39	39" X 39" WHITE PVC WALL SHUTTER	1500	\$216 ◆	2	13.5
EASW51	51" X 51" WHITE PVC WALL SHUTTER	1500	\$333 ◆	3	19.5
EASW54	54" X 54" WHITE PVC WALL SHUTTER	1500	\$351 ◆	3	28



Model AMD
Motorized Damper
Extruded Aluminum Frame & Blade

Ship Schedules:
● Next Day Shipment From Stock
▲ 3 Day Shipment From Stock
◆ 10 Day Shipment

Part ID	Description	Max Velocity (FPM)	Unit Price	Est. Shipping Weight (lbs.)
AMD12	12" X 12" HD EXTRUDED ALUM DAMPER WITH MOTOR	3500	\$462 ◆	10
AMD16	16" X 16" HD EXTRUDED ALUM DAMPER WITH MOTOR	3500	\$520 ◆	12
AMD20	20" X 20" HD EXTRUDED ALUM DAMPER WITH MOTOR	3500	\$551 ◆	15
AMD24	24" X 24" HD EXTRUDED ALUM DAMPER WITH MOTOR	3500	\$611 ◆	17
AMD30	30" X 30" HD EXTRUDED ALUM DAMPER WITH MOTOR	3500	\$938 ◆	36
AMD36	36" X 36" HD EXTRUDED ALUM DAMPER WITH MOTOR	3500	\$1,071 ◆	47
AMD42	42" X 42" HD EXTRUDED ALUM DAMPER WITH MOTOR	3500	\$1,254 ◆	55
AMD48	48" X 48" HD EXTRUDED ALUM DAMPER WITH MOTOR	3500	\$1,357 ◆	67



Model GMD
Motorized Damper
Galvanized Steel Frame & Blade

Part ID	Description	Max Velocity (FPM)	Unit Price	Est. Shipping Weight (lbs.)
GMD12	12" X 12" HD GALV DAMPER WITH MOTOR	3500	\$403 ●	14
GMD16	16" X 16" HD GALV DAMPER WITH MOTOR	3500	\$409 ●	21
GMD20	20" X 20" HD GALV DAMPER WITH MOTOR	3500	\$421 ●	25
GMD24	24" X 24" HD GALV DAMPER WITH MOTOR	3500	\$436 ●	32
GMD30	30" X 30" HD GALV DAMPER WITH MOTOR	3500	\$683 ●	53
GMD36	36" X 36" HD GALV DAMPER WITH MOTOR	3500	\$781 ●	67
GMD42	42" X 42" HD GALV DAMPER WITH MOTOR	3500	\$913 ●	83
GMD48	48" X 48" HD GALV DAMPER WITH MOTOR	3500	\$965 ●	98



Model ACD
Motorized Hat Channel Damper
Aluminum Frame & Blade

Part ID	Description	Max Velocity (FPM)	Unit Price	Est. Shipping Weight (lbs.)
ACD12	12" X 12" HD ALUM HAT CHANNEL DAMPER WITH MOTOR	3500	\$597 ◆	5
ACD16	16" X 16" HD ALUM HAT CHANNEL DAMPER WITH MOTOR	3500	\$729 ◆	7
ACD20	20" X 20" HD ALUM HAT CHANNEL DAMPER WITH MOTOR	3500	\$777 ◆	10.5
ACD24	24" X 24" HD ALUM HAT CHANNEL DAMPER WITH MOTOR	3500	\$837 ◆	13
ACD30	30" X 30" HD ALUM HAT CHANNEL DAMPER WITH MOTOR	3500	\$1,144 ◆	18.5
ACD36	36" X 36" HD ALUM HAT CHANNEL DAMPER WITH MOTOR	3500	\$1,300 ◆	25
ACD42	42" X 42" HD ALUM HAT CHANNEL DAMPER WITH MOTOR	3500	\$1,323 ◆	34
ACD48	48" X 48" HD ALUM HAT CHANNEL DAMPER WITH MOTOR	3500	\$1,659 ◆	42

Louvers



Model AFL
Fixed Louver
Aluminum Frame & Blade

Ship Schedules:
● Next Day Shipment From Stock
▲ 3 Day Shipment From Stock
◆ 10 Day Shipment

Part ID	Description	Unit Price	Est. Shipping Weight (lbs.)
AFL18	18" X 18" ALUM FIXED BLADE LOUVER	\$183 ●	8
AFL24	24" X 24" ALUM FIXED BLADE LOUVER	\$267 ●	14
AFL30	30" X 30" ALUM FIXED BLADE LOUVER	\$355 ●	20
AFL36	36" X 36" ALUM FIXED BLADE LOUVER	\$445 ●	26
AFL48	48" X 48" ALUM FIXED BLADE LOUVER	\$694 ●	40



Model GFL
Steel Fixed Louver
Galvaneal Steel Frame & Blade

Part ID	Description	Unit Price	Est. Shipping Weight (lbs.)
GFL18	18" X 18" GALV FIXED BLADE LOUVER	\$172 ●	18
GFL24	24" X 24" GALV FIXED BLADE LOUVER	\$244 ●	30
GFL30	30" X 30" GALV FIXED BLADE LOUVER	\$323 ●	45
GFL36	36" X 36" GALV FIXED BLADE LOUVER	\$404 ●	60
GFL48	48" X 48" GALV FIXED BLADE LOUVER	\$622 ●	100



Model DFL
Drainable Blade Fixed Louver
Extruded Aluminum Frame & Blade

Part ID	Description	Unit Price	Est. Shipping Weight (lbs.)
DFL18	18" X 18" HD ALUM DRAINABLE FIXED BLADE LOUVER	\$255 ●	10
DFL24	24" X 24" HD ALUM DRAINABLE FIXED BLADE LOUVER	\$322 ●	14
DFL30	30" X 30" HD ALUM DRAINABLE FIXED BLADE LOUVER	\$431 ●	22
DFL36	36" X 36" HD ALUM DRAINABLE FIXED BLADE LOUVER	\$538 ●	28
DFL48	48" X 48" HD ALUM DRAINABLE FIXED BLADE LOUVER	\$825 ●	47



Model DFL-F
Drainable Blade Fixed Louver with Flange
Extruded Aluminum Frame & Blade

Part ID	Description	Unit Price	Est. Shipping Weight (lbs.)
DFL18-F	18" X 18" HD ALUM DRAINABLE FIXED BLADE LOUVER WITH FLANGE	\$299 ◆	10
DFL24-F	24" X 24" HD ALUM DRAINABLE FIXED BLADE LOUVER WITH FLANGE	\$370 ◆	14
DFL30-F	30" X 30" HD ALUM DRAINABLE FIXED BLADE LOUVER WITH FLANGE	\$483 ◆	22
DFL36-F	36" X 36" HD ALUM DRAINABLE FIXED BLADE LOUVER WITH FLANGE	\$603 ◆	28
DFL48-F	48" X 48" HD ALUM DRAINABLE FIXED BLADE LOUVER WITH FLANGE	\$901 ◆	47



Model ACL
Combination Louver/Damper
Extruded Aluminum Frame & Blade

Part ID	Description	Unit Price	Motor Option (Ships loose)	Motor Price	Est. Shipping Weight (lbs.)
ACL18	18" X 18" ALUM COMBO LOUVER/DAMPER	\$515 ◆	MTR-ACL	\$467 ◆	12
ACL24	24" X 24" ALUM COMBO LOUVER/DAMPER	\$661 ◆	MTR-ACL	\$467 ◆	21
ACL30	30" X 30" ALUM COMBO LOUVER/DAMPER	\$864 ◆	MTR-ACL	\$467 ◆	29
ACL36	36" X 36" ALUM COMBO LOUVER/DAMPER	\$990 ◆	MTR-ACL	\$467 ◆	38
ACL48	48" X 48" ALUM COMBO LOUVER/DAMPER	\$1,560 ◆	MTR-ACL	\$467 ◆	64



Model ACL-F
Combination Louver/Damper with Flange
Extruded Aluminum Frame & Blade

Part ID	Description	Unit Price	Motor Option (Ships loose)	Motor Price	Est. Shipping Weight (lbs.)
ACL18-F	18" X 18" ALUM COMBO LOUVER/DAMPER WITH FLANGE	\$519 ◆	MTR-ACL	\$467 ◆	12
ACL24-F	24" X 24" ALUM COMBO LOUVER/DAMPER WITH FLANGE	\$670 ◆	MTR-ACL	\$467 ◆	21
ACL30-F	30" X 30" ALUM COMBO LOUVER/DAMPER WITH FLANGE	\$876 ◆	MTR-ACL	\$467 ◆	29
ACL36-F	36" X 36" ALUM COMBO LOUVER/DAMPER WITH FLANGE	\$1004 ◆	MTR-ACL	\$467 ◆	38
ACL48-F	48" X 48" ALUM COMBO LOUVER/DAMPER WITH FLANGE	\$1,588 ◆	MTR-ACL	\$467 ◆	64



Model ADL
Door Louver
Extruded Aluminum Frame & Blade

Part ID	Description	Unit Price	Est. Shipping Weight (lbs.)
ADL10X4	10" X 4" ALUM DOOR LOUVER	\$74 ◆	2
ADL12X12	12" X 12" ALUM DOOR LOUVER	\$112 ◆	4
ADL16X8	16" X 8" ALUM DOOR LOUVER	\$94 ◆	3.5
ADL16X16	16" X 16" ALUM DOOR LOUVER	\$144 ◆	5
ADL20X10	20" X 10" ALUM DOOR LOUVER	\$125 ◆	4.5
ADL20X20	20" X 20" ALUM DOOR LOUVER	\$201 ◆	7
ADL24X12	24" X 12" ALUM DOOR LOUVER	\$152 ◆	5.5
ADL24X24	24" X 24" ALUM DOOR LOUVER	\$263 ◆	9

Ship Schedules:
● Next Day Shipment From Stock
▲ 3 Day Shipment From Stock
◆ 10 Day Shipment



Model SDL
Door Louver
Steel Frame & Blade

Part ID	Description	Unit Price	Est. Shipping Weight (lbs.)
SDL10X4	10" X 4" STEEL DOOR LOUVER	\$63 ◆	3
SDL12X12	12" X 12" STEEL DOOR LOUVER	\$108 ◆	6
SDL16X8	16" X 8" STEEL DOOR LOUVER	\$101 ◆	5
SDL16X16	16" X 16" STEEL DOOR LOUVER	\$122 ◆	7.5
SDL20X10	20" X 10" STEEL DOOR LOUVER	\$112 ◆	6.5
SDL20X20	20" X 20" STEEL DOOR LOUVER	\$160 ◆	10.5
SDL24X12	24" X 12" STEEL DOOR LOUVER	\$131 ◆	8
SDL24X24	24" X 24" STEEL DOOR LOUVER	\$204 ◆	13.5

Ship Schedules:
● Next Day Shipment From Stock
▲ 3 Day Shipment From Stock
◆ 10 Day Shipment

Freight Policy, Discount Multiplier, & Warranty Cheat Sheet

This chart is for quick reference for full information on pricing, freight policies and warranty please refer to individual product pages in the price book or in our full catalog.

Contact your local S&P Representative or Regional Manager to obtain you discount multipliers.

Series	Discount Multiplier Category	Freight Policy	Min. Net \$ Total for Prepaid Freight	Warranty (in years)
PV	Residential	A	\$1500/net	5
Dryer Booster Kits	Residential	A	\$1500/net	5
SWF	Residential	A	\$1500/net	5
PRF	Residential	A	\$1500/net	5
TD-MIXVENT	Residential	A/B*	\$1500/net	5
TD-SILENT	Residential	A	\$1500/net	5
WA	Residential	A	\$1500/net	5
DA	Residential	A	\$1500/net	5
PC	Residential	A	\$1500/net	5
PCV	Residential	A	\$1500/net	5
PCD	Residential	A	\$1500/net	6
PCLP	Residential	A	\$1500/net	5
PCRL	Residential	A	\$1500/net	5
reFresh	Residential	A	\$1500/net	5
TR	Residential	TR	\$1750/net	10-year core warranty, 5-year warranty on balance of unit
TRC, TRCV, TRCe, & TRCVe	Residential	TRC/TRCV/ TRCe/TRCVe	N/A	10-year core warranty, 2-year warranty on balance of unit
LPD	Quickship	B	N/A	5
SDBD	Quickship	B	N/A	5
SDB	Quickship	B	N/A	5
STXD/STXDRHUL	Quickship	B	N/A	5/2
STXBRHUL	Quickship	B	N/A	2
CWD	Quickship	B	N/A	5
KSFV	Quickship	B	N/A	5
SQB	Quickship	B	N/A	2
SQD	Quickship	B	N/A	2
ARE/ARS	Quickship	B	N/A	5
GED	Quickship	B	N/A	5
LCE/LCS	Quickship	B	N/A	2
CM/CMRHUL	Quickship	B	N/A	5/2
RCXII	Quickship	B	N/A	5
IF & HP	Quickship	B	N/A	1
AF/FF/FFC	Quickship	A/B*	\$1500/net on applicable models	1
Dampers, Shutters & Louvers	Quickship	B	N/A	1

*Only specific sizes qualify for freight policy type A, please see product info for size limitations.



S&P USA Ventilation Systems, LLC

6393 Powers Avenue
Jacksonville, FL 32217
T. 904-731-4711 • F. 904-737-8322
www.solerpalau-usa.com

S&P Canada Ventilation Products, Inc.

6710 Maritz Drive Unit #7
Mississauga, ON L5W 0A1 - Canada
T. 416-744-1217 • F. 416-744-0887
www.solerpalaucanada.com

