

FLTD-60 Fan/Light Delay Timer Switch



The World's Leading Producer of
Air Movement Products
6393 Powers Avenue
Jacksonville, Florida 32217-2298
P: 800.961.7370 F: 800.961.7379
www.solerpalau-usa.com

Specifications:

TIME DELAY
Adjustment: On-board Trimpot
Range: 1 to 60 minutes
Repeatability: $\pm 0.5\%$ +8ms max.
Accuracy:
Maximum time -0%, +10%
Minimum time -30%, +0%

Features:

- One switch controls fan and light
- Digital timing circuit
- Saves energy by automatically turning exhaust fan off
- Adjustable fan turn off time
- Fits single switch outlet box
- Simple wire nut hook-up
- Cover plate and hardware provided

INPUT

Operating Voltage: 120 VAC $\pm 10\%$
Power Consumption: 3.5 VA max. at 120 VAC
(exclusive of loads)
Frequency: 50/60 Hz

OUTPUT

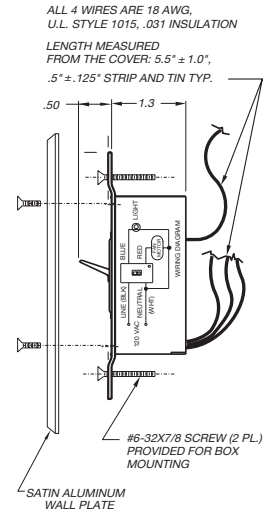
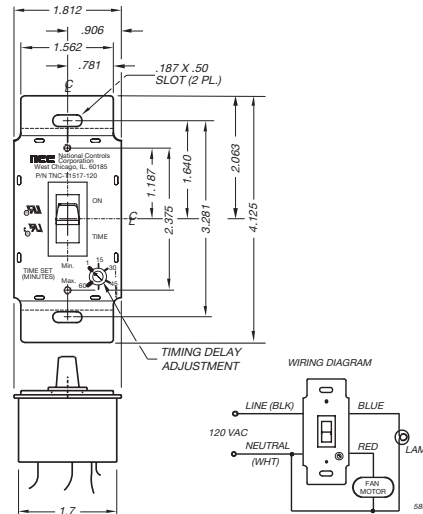
A-Lamp Load (Switch): 500 W at 120 VAC max.
(blue wire)
B-Fan Load (Switch and Relay Contact):
1/3 hp, 10 A (resistive) at 120 VAC max. (red wire)
Life: 100,000 cycles at full load

MECHANICAL

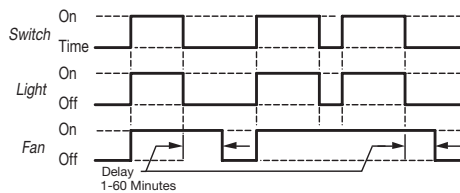
Mounting: Fits single switch outlet box
Electrical: Simple wire nut hook-up
Switch color: Black

ENVIRONMENTAL

Storage Temperature: -40°C to 70°C
Operating Temperature: -40°C to 55°C
Humidity: 95% relative



Logic Function Diagram



Operating Logic: Voltage is applied to the unit at all times via the black and white wires. When the switch is placed in the ON position, power is applied to the lamp and fan output. When the switch is placed in the TIMED position, the power is removed from the lamp output and the fan output stays on for the preset delay time. After the delay time the power is removed from the fan output. Should the switch be placed in the ON position during the delay time, the timer will be reset and both outputs will be ON as defined above. Should power be interrupted, when in the TIMED position, the timer will be reset and when power is re-applied the fan output will be ON for the preset delay time after the power is re-applied.

ACCESSORY MODEL	1	2	3	4	5	REMARKS

PROJECT: _____ CONTRACTOR: _____
 LOCATION: _____ REVISION DATE: _____
 FORM NO.: _____ SUBMITTED BY: _____ DATE: _____
 ENGINEER: _____ APPROVED BY: _____ DATE: _____

For more information contact us at www.solerpalau-usa.com or 1.800.961.7370 for additional submittal drawings.

Soler & Palau will not be responsible for fabrication changes or errors resulting from customer use of a non-current submittal drawing.