



## DESCRIPTION

Complete vitreous china lavatory with backsplash

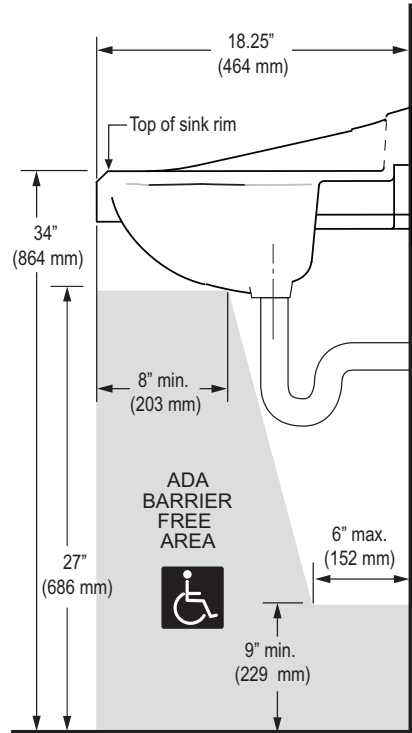
Model SS-3003



## SPECIFICATIONS

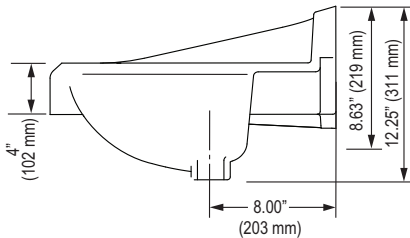
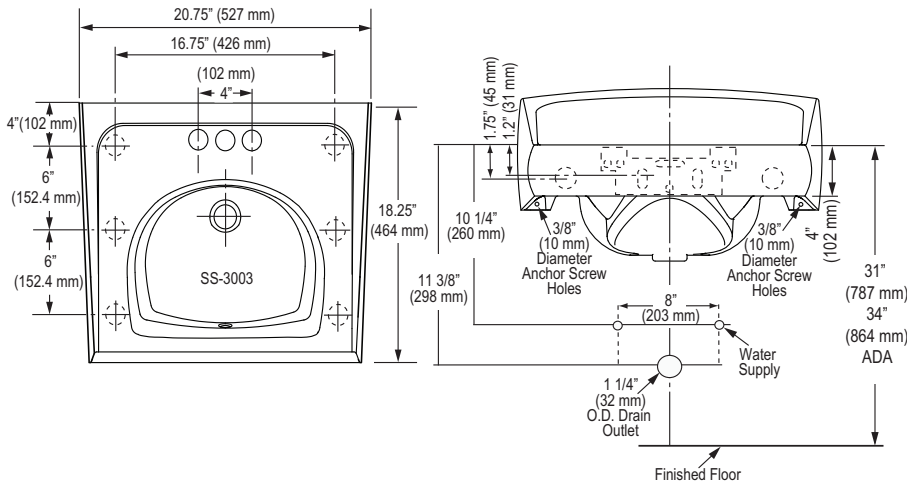
### Lavatory

- White vitreous china
- Wall mount
- Hanging hardware
- Backsplash
- 4" (102 mm) centers
- Overflow
- ADA compliant when mounted with deck at 34" from finished floor. See illustration for recommended ADA installation
- 20.75" (527 mm) x 18.25" (464 mm)
- Compliant to the applicable sections of ASME A112.19.2/CSA B45.1
- Carrier not included
- Compatible with:  
Jay R. Smith- 0700 series lavatory carrier or equal  
Josam- 17100-202 series lavatory carrier or equal  
Watts TCA-411 concealed arm "track" carrier or equal  
Watts-WCA-411 carrier with concealed arms or equal



### Product Specification

Sink shall be made of vitreous china. Sink shall be wall mounted. Sink shall have an overflow. Sink shall be a 4" centerset. Sink shall be Sloan Model SS-3003.



Important: Fixture dimensions are nominal and may vary slightly from drawings.

### This space for Architect/Engineer approval

Job Name	Date
Model Specified	Quantity
Variations Specified	
Customer/Wholesaler	
Contractor	
Architect	

The information contained in this document is subject to change without notice.



Sloan Valve Company is buying renewable energy certificates to meet 100% of the company's purchased electricity use at its Franklin Park, Illinois facility.

# SLOAN®

Sloan Valve Company  
10500 Seymour Avenue  
Franklin Park, IL 60131  
Phone: 1-800-9-VALVE-9 (982-5839)  
or 1-847-671-4300  
Fax: 1-800-447-8329 or 1-847-671-4380  
www.sloanvalve.com

Copyright © 2010 Sloan Valve Company  
07/10 Rev. 1a