

# Royal® Model Flushometer

# 320 320-1.0



## ► Description

Exposed Urinal Foot Pedal Flushometer, for 3/4" top spud urinals.

## ► Flush Cycle

- Model 320 Water Saver (1.5 gpf/5.7 Lpf)
- Model 320-1.0 Low Consumption (1.0 gpf/3.8 Lpf)

## ► Specifications

Quiet, Exposed, Diaphragm Type, Chrome Plated Urinal Flushometer with the following features:

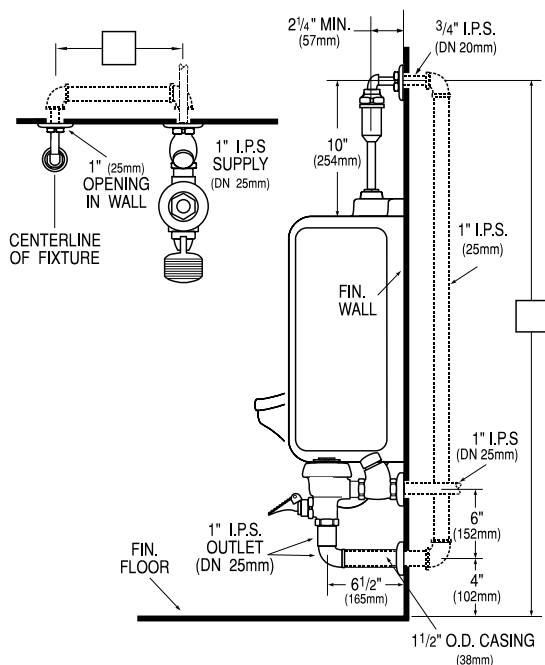
- PERMEX™ Synthetic Rubber Diaphragm with Dual Filtered Fixed Bypass
- Metal Non-Hold-Open Foot Pedal with Triple Seal Handle Packing
- 1" I.P.S. Screwdriver Bak-Chek™ Straight Stop
- Free Spinning Vandal Resistant Stop Cap
- Ground Joint Tailpiece
- 1" Female I.P.S. Union Outlet
- 1" I.P.S. Street Elbow, Casing and Wall Flange to cover 1" pipe
- 3/4" Elbow Flush Connection, Spud Coupling, and Flanges from finished wall to 3/4" Exposed Top Spud
- High Back Pressure Vacuum Breaker with One-piece Bottom Hex Coupling Nut
- Sweat Solder Adapter and Cast Set Screw Wall Flange
- High Copper, Low Zinc Brass Castings for Dezincification Resistance
- Non-Hold-Open Foot Pedal, Fixed Metering Bypass and No External Volume Adjustment to Ensure Water Conservation
- Flush Accuracy Controlled by CID™ Technology
- Diaphragm, Handle Packing, Stop Seat and Vacuum Breaker to be molded from PERMEX™ Rubber Compound for Chloramine Resistance

Valve Body, Cover, Tailpiece and Control Stop shall be in conformance with ASTM Alloy Classification for Semi-Red Brass. Valve shall be in compliance to the applicable sections of ASSE 1037, ANSI/ASME 112.19.6, and Military Specification V-29193.

## ► Variations

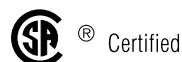
- U 1 1/4" Flush connection and Spud Coupling

See Accessories Section of the Sloan catalog for details on these and other Flushometer variations.



**NOTE:** Flush Connections shown in dotted lines not included.

Royal 320 S.S. — Rev. 1 (12/01)  
Copyright © 2001 SLOAN VALVE COMPANY Printed in the U.S.A.



This space for Architect/Engineer approval

The information contained in this document is subject to change without notice.

# SLOAN®

Made in the U.S.A.  
SLOAN VALVE COMPANY • 10500 SEYMOUR AVE. • FRANKLIN PARK, IL. 60131  
Ph: 1-800-9-VALVE-9 or 1-847-671-4300 • Fax: 1-800-447-8329 or 1-847-671-4380  
<http://www.sloanvalve.com>