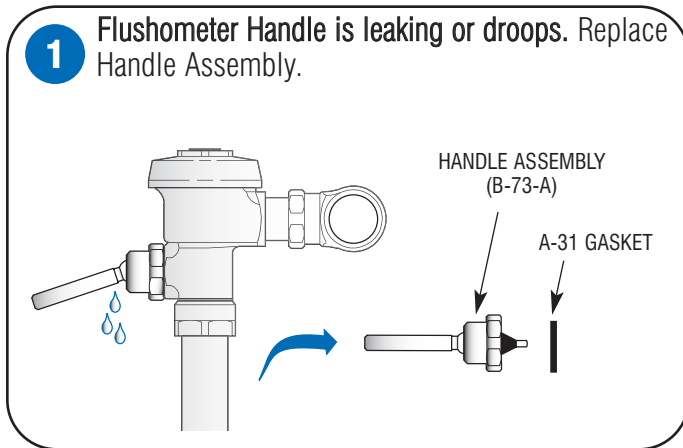


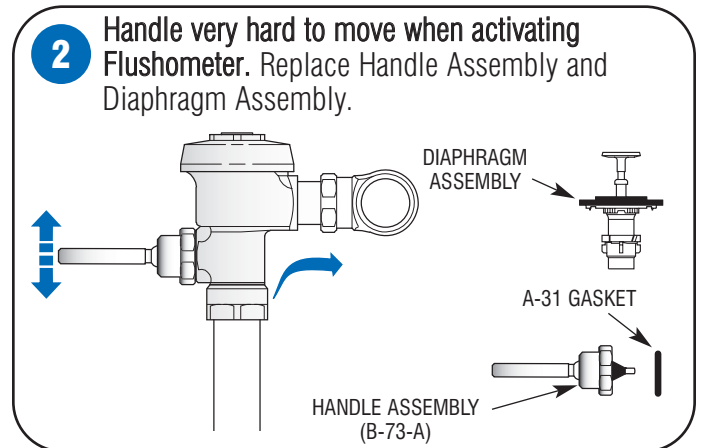


Confirm Manual Flushometer Operation

- 1** Flushometer Handle is leaking or droops. Replace Handle Assembly.

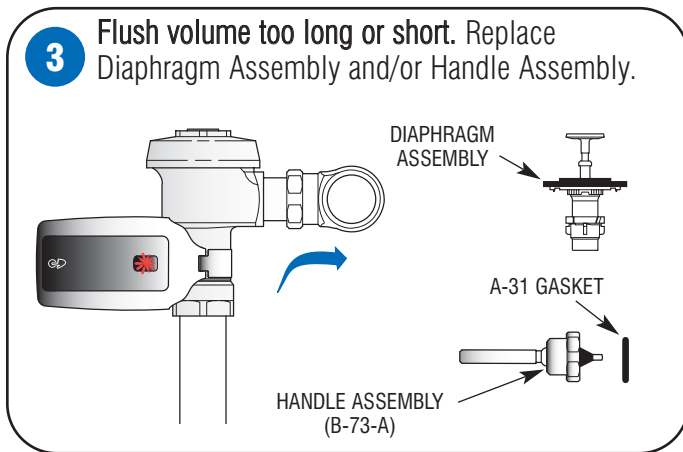


- 2** Handle very hard to move when activating Flushometer. Replace Handle Assembly and Diaphragm Assembly.



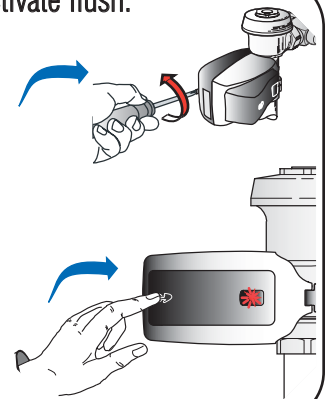
Post Installation

- 3** Flush volume too long or short. Replace Diaphragm Assembly and/or Handle Assembly.



- 4** Auto Cycle does not Activate flush.

- A.** Make sure strap is tightened securely.
- B. Reset Unit:**
- Push and hold SMOOTH Override Handle in until red light is on (20-40 seconds).
 - Release Handle.
 - Flushometer cycles automatically when complete.

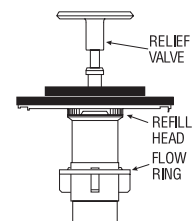


Diaphragm Assembly Chart

Diaphragm Only KIT						
Code No.	Kit No.	Flush Volume	Use With	Relief Valve †	Refill Head ‡	Flow Ring
3301502	A-1041-A	1.6 gpf (6.0 Lpf)	Low Consumption Water Closets	Green	Gray	Smooth
3301501	A-1038-A	3.5 gpf (13.2 Lpf)	Water Saver Water Closets	White	Gray	Smooth
3301505	A-1044-A	2.4 gpf (9.0 Lpf)	9 Liter European Water Closets	Blue	Gray	Smooth
3301504	A-1043-A	0.5 gpf (1.9 Lpf)	Wash Down Urinals	Green	Black	Smooth & Slotted
3301503	A-1042-A	1.0 gpf (3.8 Lpf)	Low Consumption Urinals	Green	Black	Slotted
3301500	A-1037-A	1.5 gpf (5.7 Lpf)	Water Saver Urinals	Black	Black	Smooth

† Consult Sloan Valve Company for availability of replacement plastic Relief Valves (Green, Black, Blue, and White) and brass Relief Valves.

NOTE: For older water closets that require 4.5 gpf (17.0 Lpf), choose kit No. A-1038-A, but remove the Flow Ring before use. For blowout-style urinals that require 3.5 gpf (13.2 Lpf), choose kit No. A-1038-A. For service sinks that require 6.5 gpf (24.6 Lpf), order A-36-A diaphragm repair kit (3301036; not shown above) and remove the Flow Ring before use. Regulations for Low Consumption fixtures prohibit the use of higher flush volumes.



The colors of the Relief Valve and the Refill Head plus the shape of the Flow Ring identify the Flush Volume of a DUAL FILTERED DIAPHRAGM ASSEMBLY.

‡ Closet Refill Heads (Gray) have larger slots than Urinal Refill Heads (Black).

The information contained in this document is subject to change without notice.