



DESCRIPTION

Complete system with exposed, sensor-activated, Royal® Optima® True Mechanical Override HEU flushometer and vitreous china HEU urinal.

Flush Cycle

Model WEUS-1000.1304-0.125-ES-S TMO

(0.125 gpf/0.5 Lpf)

Code: 10001304



SPECIFICATIONS

Quiet, exposed, sensor-activated, diaphragm-type, chrome plated HEU flushometer for either left or right hand supply and vitreous china HEU urinal with the following features:

Flushometer and Optima® ES-S TMO Unit

- PERMEX® Synthetic Rubber Diaphragm with Dual-Filtered Fixed Bypass
- Optima® EL-1500 Self-Adaptive Infrared Sensor with Indicator Light
- "Walk By" Delay of Eight (8) Seconds Prevents Unintentional Flushes
- User-Friendly Three (3) Second Flush Delay
- Courtesy Flush® Non-Hold-Open True Mechanical Override Button
- Non-Hold-Open Integral Solenoid Operator
- Chrome Plated Wall Cover Plate and Die Cast Wall Flange (for 2-gang Electrical Box) with Vandal Resistant Screws
- 3/4" I.P.S. Screwdriver Bak-Chek® Angle Stop with free Spinning Vandal Resistant Stop Cap
- Adjustable Tailpiece
- High Back Pressure Vacuum Breaker Flush Connection with One-Piece Bottom Hex Coupling Nut, Spud Coupling and Flange for 3/4" Top Spud
- Sweat Solder Adapter with Cover Tube and Cast Wall Flange with Set Screw
- High copper, low zinc brass castings for dezincification resistance
- Fixed Metering Bypass and no external volume adjustment to ensure water conservation
- Flush accuracy controlled by CID technology
- Diaphragm, Stop Seat and Vacuum Breaker to be molded from PERMEX rubber compound for chloramine resistance
- Valve Body, Tailpiece and Control Stop shall be in conformance with ASTM Alloy Classification for Semi-Red Brass. Valve shall be in compliance with the applicable sections of ASSE 1037.

Urinal

- Wall hung vitreous china
- Washdown flushing action
- 3/4" I.P.S. top spud inlet
- 2" NPT outlet flange
- All mounting hardware included
- Integral flushing rim
- 100% factory flush tested
- Vandal resistant strainer assembly included
- Compliant to the applicable sections of ASME A112.19.2/CSA B45.1
- Carrier not included
- Compliant with the Buy American Act when purchased as a combination

FEATURES

Automatic

Sloan's Optima® equipped flushometers provide the ultimate in sanitary protection and automatic operation. There are no handles to trip or buttons to push. The flushometer operates by means of an infrared sensor that adapts to its surroundings. Once the user enters the sensor's effective range and then steps away, the flushometer solenoid initiates the flushing cycle to flush the fixture.

Hygienic

User makes no physical contact with the flushometer surface. Helps control the spread of infectious diseases. The 24-hour Sentinel Flush keeps fixture fresh during periods of non-use.

Economical

Automatic operation and a low flush volume provide water savings over other flushing devices. Reduces maintenance and operation costs.

Practical

Solid state electronic circuitry assures years of dependable, trouble-free operation. The operational components of the flushometer are identical to a handle operated Royal® flushometer, proven by more than 100 years of experience.

Warranty

3 year (limited)



Meets the American Disabilities Guidelines and ANSI A117.1 requirements when installed according to these requirements.

NOTE: Plumbing System Requirements

√ Minimum **Flowing** Pressure: 25 PSI

√ Maximum Fixture Static Pressure: 80 PSI

| | |
|--|----------|
| This space for Architect/Engineer approval | |
| Job Name | Date |
| Model Specified | Quantity |
| Variations Specified | |
| Customer/Wholesaler | |
| Contractor | |
| Architect | |

The information contained in this document is subject to change without notice.



Headquarters

10500 Seymour Avenue
Franklin Park, IL 60131
P: 847-671-4300 / 800-9-VALVE-9
F: 800-447-8329 / 847-671-4380
www.sloanvalve.com



DESCRIPTION

Complete system with exposed, sensor-activated, Royal® Optima® True Mechanical Override HEU Flushometer and vitreous china HEU urinal.

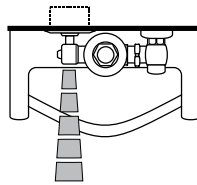
Flush Cycle

Model WEUS-1000.1304-0.125-ES-S TMO
(0.125 gpf/0.5 Lpf)
Code: 10001304

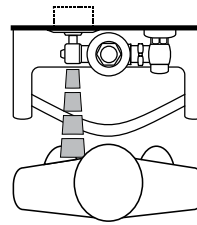
ELECTRICAL SPECIFICATIONS

- **Control Circuit**
Solid State
24 VAC Input/Output
8 Second Arming Delay
24 Hour Sentinel Flush
- **OPTIMA® Sensor Range**
Nominal 15" – 30" (381 mm – 762 mm)
Self-adaptive Window ± 8"(203 mm)
- **Solenoid Operator**
24 VAC, 50/60 Hz
- **Transformer Accessories**
EL-154 Transformer (120 VAC/24 VAC 50 VA)
EL-342 Transformer (240 VAC/24 VAC 50 VA)

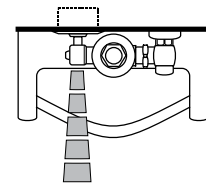
OPERATION



1. A continuous, invisible light beam is emitted from the Optima® Sensor.

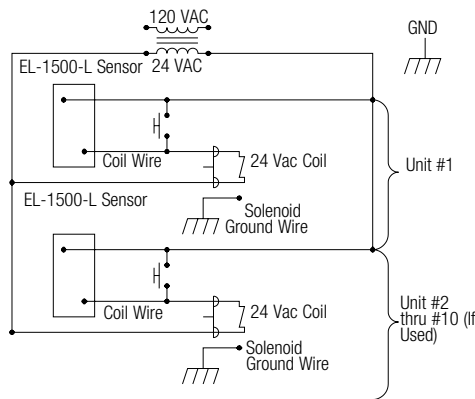


2. As the user enters the beam's effective range (15" to 30") the beam is reflected into the Optima® Scanner Window and transformed into a low voltage electrical circuit. Once activated, the Output Circuit continues in a "hold" mode for as long as the user remains within the effective range of the sensor.



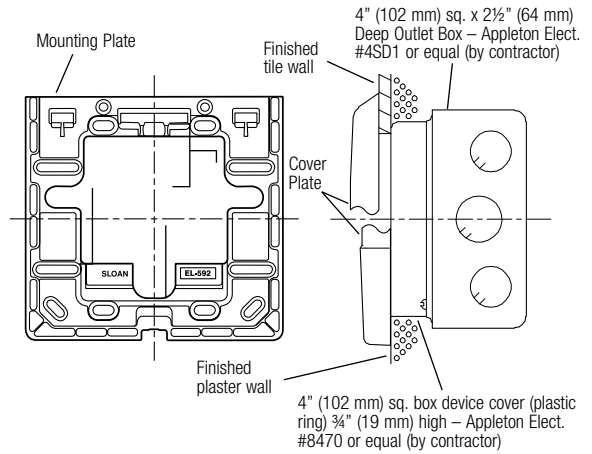
3. When the user steps away from the OPTIMA® Sensor, the circuit immediately initiates an electrical "one-time" signal that operates the Solenoid. This initiates the flushing cycle to flush the fixture. The Circuit then automatically resets and is ready for the next user.

WIRING DIAGRAM

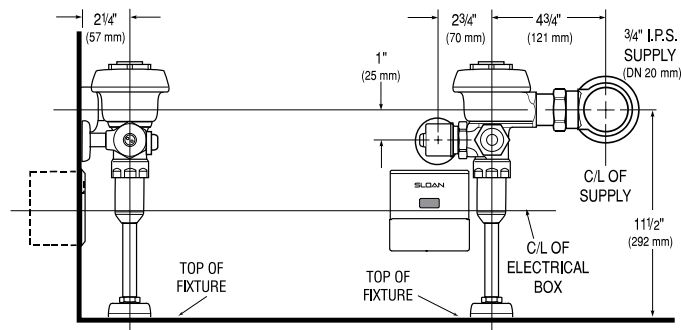


ELECTRICAL BOX INSTALLATION

Sensor location and positioning is critical.
Failure to properly position the electrical boxes to the plumbing rough-in will result in improper installation and impair product performance. All tradesmen (plumbers, electricians, tile setters, etc.) involved with the installation of this product must coordinate their work to assure proper product installation. Installation template furnished with flushometer.

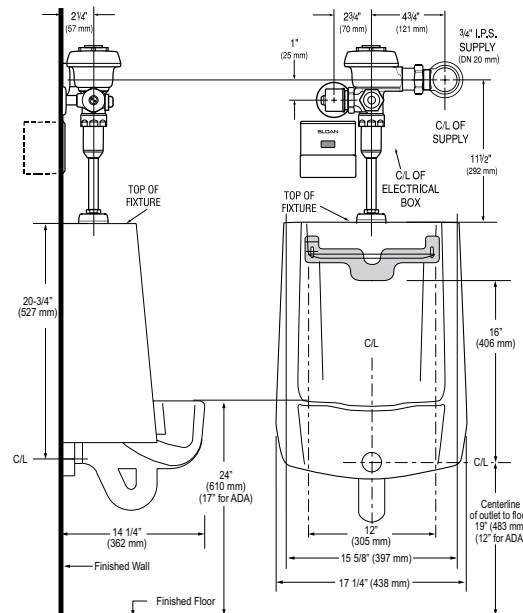


DIMENSIONS/ROUGH-IN



To ensure a perfect rough-in, Sloan recommends the use of the EL-518-A flushometer electrical box positioning and support kit. Specify and order the EL-518-A kit separately. Consult factory for installation details.

NOTE: All vitreous china dimensions shown in these drawings are nominal. Dimensions can vary within the tolerances established in the governing ASME A112.19.2/ CSA B45.1 standard. Please take this into consideration when planning rough-in and plumbing layouts.



HEADQUARTERS • 10500 SEYMOUR AVENUE • FRANKLIN PARK, IL 60131

Phone: 1-800-9-VALVE-9 (982-5839) or 1-847-671-4300 • Fax: 1-800-447-8329 or 1-847-671-4380 • www.sloanvalve.com