

Model
WEUS-1000.1411-0.125 ECOS® Hardwire
OPTIMA® Systems Hardwire HEU Flushometer and HEU Urinal

DESCRIPTION

Complete HEU system with Exposed, Hardwired, Dual Flush, Sensor Activated Sloan ECOS® urinal Flushometer with Smart Sense Technology™ and vitreous china urinal.

Flush Cycle

Model WEUS 1000.1411-0.125 ECOS® (0.125 gpf/0.5 Lpf)
Code: 10001411



SPECIFICATIONS

Quiet, exposed, chrome plated urinal Flushometer for either left or right hand supply with the following features:

Flushometer

- ADA Compliant Sloan ECOS® Hardwired Infrared Sensor for automatic "No Hands" operation
- Reduces water usage up to 80% over standard sensor urinal
- Engineered Metal Cover with replaceable Lens Window
- Courtesy Flush® Override Button
- Line Powered with 6 VAC Step Down Transformer
- Infrared Sensor Range Adjustment Screw
- Initial Set-up Range Indicator Light (first 10 minutes)
- 3/4" I.P.S. Screwdriver Bak-Chek® Angle Stop
- Free spinning, Vandal Resistant Stop Cap
- High Efficiency cartridge assembly
- Flush Accuracy Controlled by CID Technology
- Latching Solenoid Operator
- User friendly three (3) second Flush Delay
- Synthetic rubber seals for chloramine resistance
- High Back Pressure Vacuum Breaker Flush Connection with One-piece Bottom Hex Coupling Nut
- Spud Coupling and Flange for 3/4" Top Spud
- Sweat Solder Adapter w/Cover Tube and Cast Wall Flange w/Set Screw
- Infrared Sensor with Multiple-focused, Lobular Sensing Fields for high and low target detection
- High copper, low zinc brass castings for dezincification resistance
- Patented D598,974
- Fixed Metering Bypass and no external volume adjustment to ensure water conservation
- Stop Seat and Vacuum Breaker to be molded from PERMEX® rubber compound for chloramine resistance
- Valve Body, Cover, Tailpiece and Control Stop shall be in conformance with ASTM Alloy Classification for Semi-Red Brass. Valve shall be in compliance to the applicable sections of ASSE 1037/ ASME A112.19.2/CSA B45.1

SPECIFICATIONS (CONTINUED)

Urinal

- Wall hung vitreous china
- Washdown flushing action
- Vandal resistant strainer assembly included
- 3/4" I.P.S. top spud inlet
- 2" NPT outlet flange
- All mounting hardware included
- Integral flushing rim
- 100 % factory flush tested
- Compliant to the applicable sections of ASME A112.19.2/CSA B45.1
- Carrier not included
- Compliant with Buy American Act when purchased as a combination

FEATURES

ADA Compliant

Automatic

Sloan ECOS® Hardwire Electronic Flushometers are activated via multi-lobular infrared sensor. Sloan ECOS® Electronic Urinal Flushometers are available without an override button to eliminate unnecessary casual activation. By detecting user presence and duration, the Sloan ECOS® Hardwire Smart Sense Technology™ will determine the proper flush volume for unequalled water efficiency.

Functional & Hygienic

Touchless, sensor operation eliminates the need for user contact to help control the spread of infectious diseases. The Sloan ECOS® Hardwire Flushometer is also provided with an Override Button to allow a "courtesy flush" for individual user comfort.

Smart Sense Technology

The Sloan ECOS® Hardwire Flushometer is equipped with Smart Sense Technology™ which applies extended range and logic techniques to significantly reduce water usage in high use urinal applications; such as when a continuous line of people, also known as a queue, forms. In fact during continuous queue, regardless the number of users, the maximum amount of water used is only 2.0 gallons. Please contact Sloan for specific Details.

Warranty

3 year (limited)



Meets the American Disabilities Guidelines and ANSI A117.1 requirements when installed according to these requirements.

NOTE: Plumbing System Requirements

✓ Minimum **Flowing** Pressure: 25 PSI

✓ Minimum Fixture Static Pressure: 80 PSI



This space for Architect/Engineer approval

Job Name	Date
Model Specified	Quantity
Variations Specified	
Customer/Wholesaler	
Contractor	
Architect	

The information contained in this document is subject to change without notice.

SLOAN

Sloan Valve Company
10500 Seymour Avenue
Franklin Park, IL 60131
Phone: 1-800-9-VALVE-9 (982-5839)
or 1-847-671-4300
Fax: 1-800-447-8329 or 1-847-671-4380
www.sloanvalve.com

copyright © 2014 Sloan Valve company
WEUS-1000.1411 03-14

Model
WEUS-1000.1411-0.125 ECOS® Hardwire
OPTIMA® Systems Hardwire HEU Flushometer and HEU Urinal

DESCRIPTION

Complete HEU system with Exposed, Hardwired, Dual Flush, Sensor Activated Sloan ECOS® urinal Flushometer with Smart Sense Technology™ and vitreous china urinal.

Flush Cycle

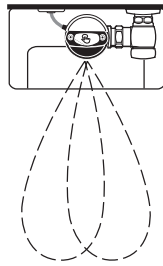
Model WEUS 1000.1411-0.125 ECOS® (0.125 gpf/0.5 Lpf)

Code: 10001411

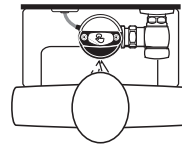
ELECTRICAL SPECIFICATIONS

- **Control Circuit**
Solid State
120 VAC Input
4.5 VAC Output
8 Second Arming Delay
3 Second Flush Delay
- **Sloan ECOS® Sensor Type**
Active infrared
- **Sloan ECOS® Sensor Range**
Nominal 15" – 30" (381 mm – 762 mm),
Adjustable ± 8" (203 mm)
- **Transformers**
Sloan Part No. EL-386
120 VAC, 60 Hz Primary
6 VAC, 60 Hz Secondary
Class II, 1/2 Amp - Plug-in Style
Sloan Part No. EL-451
120 VAC, 60 Hz Primary
6 VAC, 60 Hz Secondary
Class II, 25 VA - Box Style
- **Indicator Lights**
Range adjustment/low battery
- **Operating Pressure**
15 – 100 psi (104 – 689 kPa)
- **Sentinel Flush**
Once every 72 hours after the last flush

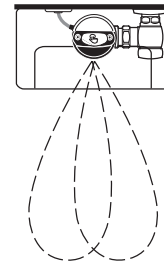
OPERATION



1. A continuous, invisible light beam is emitted from the Sloan ECOS® Dual Flush Sensor.

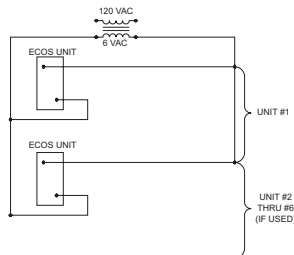


2. As the user enters the beam's effective range (15" to 30") the beam is reflected into the Sloan ECOS® Scanner Window and transformed into a low voltage electrical circuit. Once activated, the Output Circuit continues in a "hold" mode for as long as the user remains within the effective range of the Sensor.



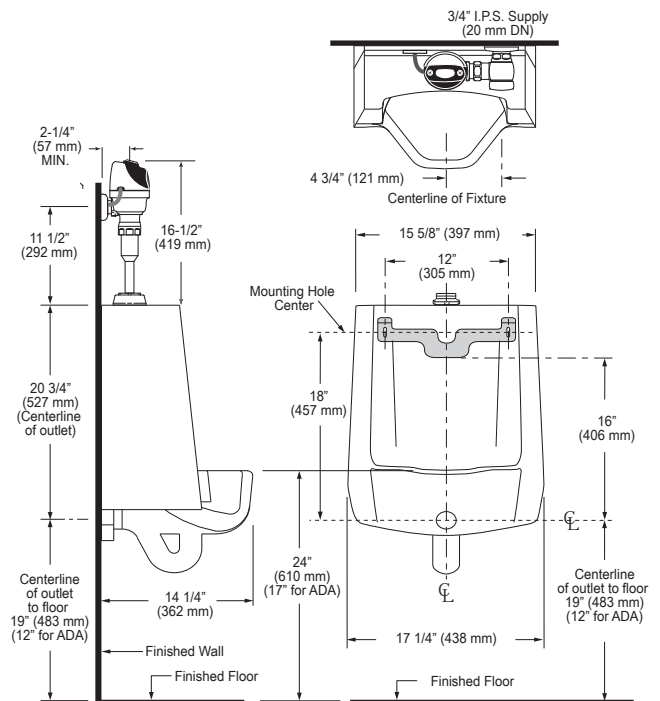
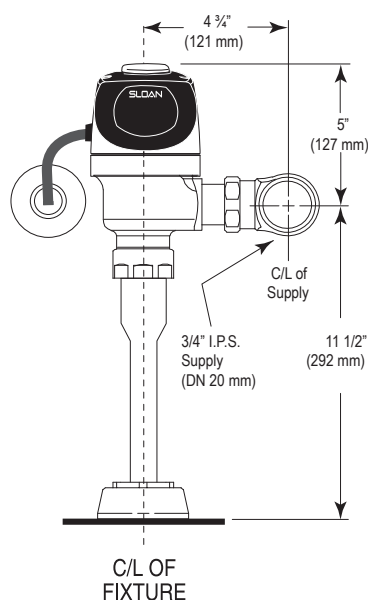
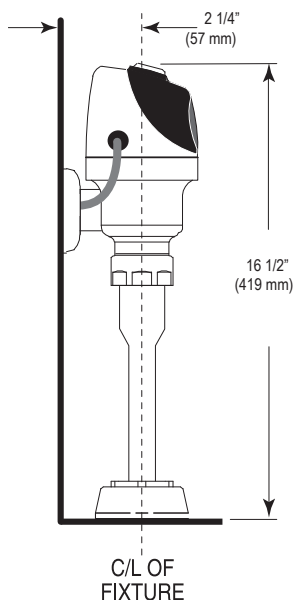
3. When the user steps away from the Sloan ECOS® Sensor, the Sensor initiates an electrical signal that operates the Solenoid. This initiates the flushing cycle to flush the fixture. The Circuit then automatically resets and is ready for the next user.

WIRING DIAGRAM



One 25 VA Transformer serves up to six ECOS units.

DIMENSIONS/ROUGH-IN



SLOAN VALVE COMPANY • 10500 SEYMOUR AVENUE • FRANKLIN PARK, IL 60131

Phone: 1-800-9-VALVE-9 or 1-847-671-4300 • Fax: 1-800-447-8329 or 1-847-671-4380 • www.sloanvalve.com