

PINECREST

SIMPLE SELECT DUAL SHOWER HEAD SHOWER SYSTEM - CROSS HANDLE

SKU: 949738



CONTENTS

VALVE TRIM	PAGE 2
ROUGH-IN VALVE	PAGE 3
SHOWER HEAD	PAGE 4
SHOWER ARM	PAGE 5

FEATURES

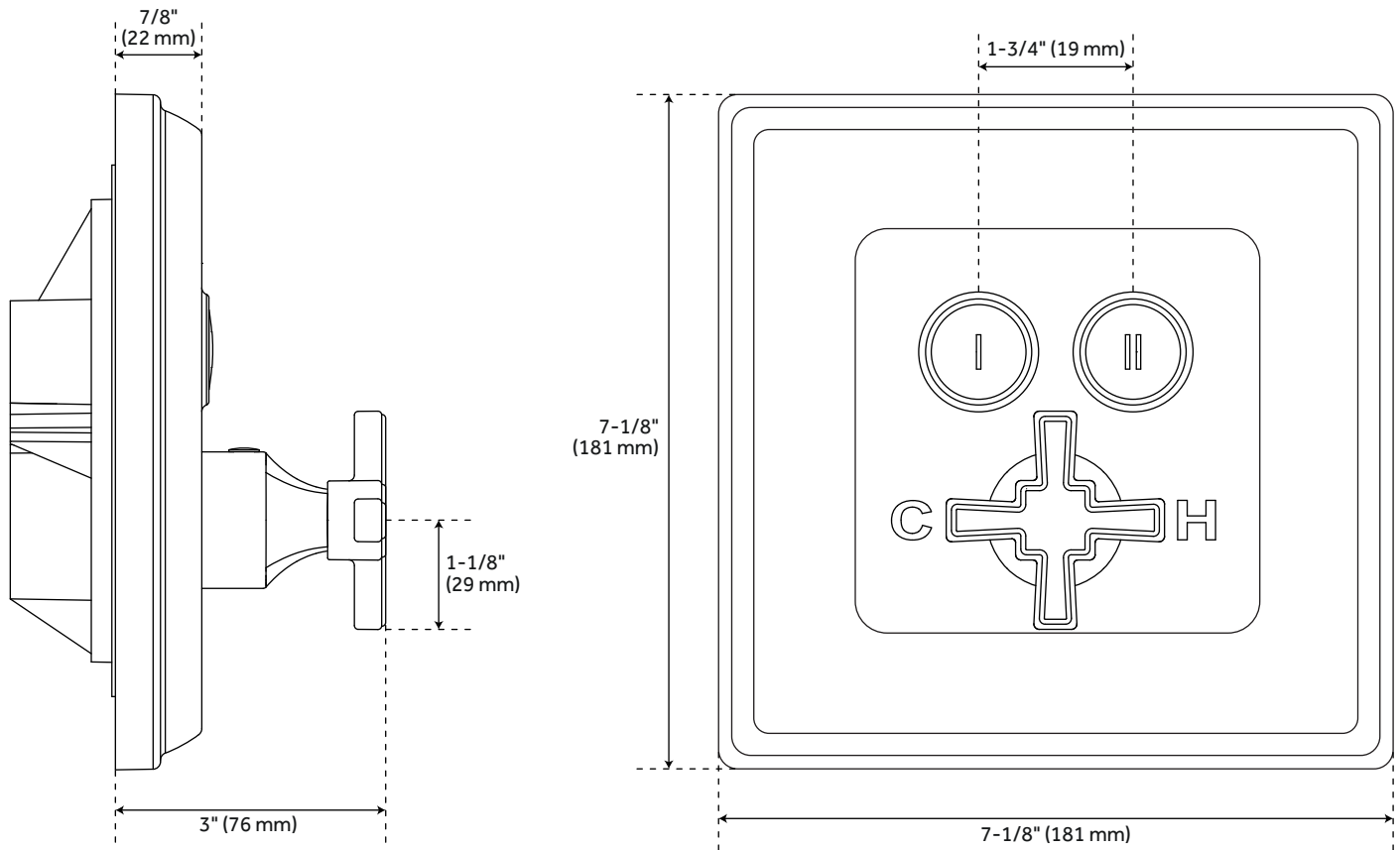
- Shape: Square
- Handle Type: Cross
- Features: Pressure-balanced
- Assembly Required: Yes
- Design: Modern
- Mounting Hardware Included: Yes
- Shower Head Installation Type: Wall
- Number Of Shower Heads: 2
- Shower Head Spray: Rainfall
- Shower Arm Included: Yes
- Shower Head Swivel: Yes
- Diverter Included: Yes
- Diverter Outlets: 2
- Dual Functionality Allows for One or Both Shower Features to Run at a Time
- Single Function Shower Heads (Full Spray)
- Easy-Clean Silicone Nozzles
- Optional Rough-In Valve:
 - Pressure Balanced with Integral Stops
 - One-Piece Cartridge Design for Ease of Maintenance
 - Back-to-Back Capability
 - Adjustable Temperature Limit Stop
 - Quick Remove Plaster Guard
 - Easy Mounting Brackets

REVISED 10/27/2020

PINECREST

SIMPLE SELECT VALVE TRIM

SKU: 949738



FEATURES

Material: Brass
Width: 7-1/8"
Height: 7-1/8"
Depth: 3"
NPT Connection: 1/2"

CODES/STANDARDS

cUPC
ASME A112.18.1/CSA B125.1
Massachusetts Accepted

PRODUCT IMAGE



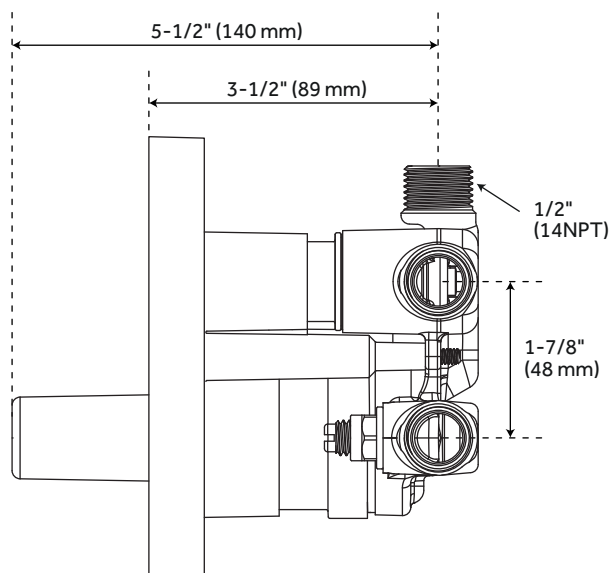
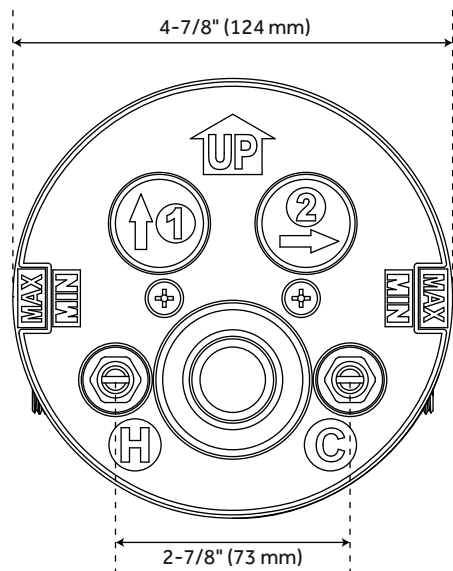
All dimensions and specifications are nominal and may vary. Use actual products for accuracy in critical situations.

PAGE 2
Code: SHPC8040LH

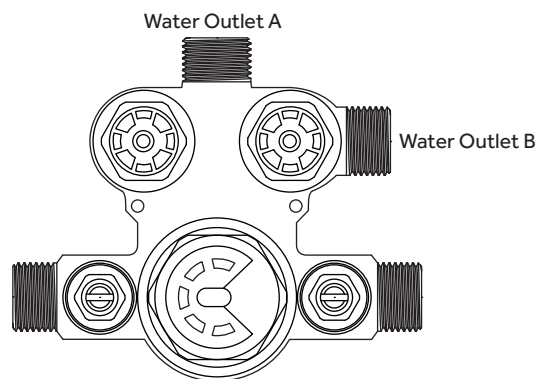
PINECREST

OPTIONAL PRESSURE BALANCE ROUGH-IN VALVE FOR SIMPLE SELECT TRIMS

SKU: 949738



Pressure (PSI)		20	40	60	80
Simultaneous (Both Valves Open)	Total (GPM)	3.4	5	6.3	7.4
	Outlet A (GPM)	1.2	2.2	2.9	3.5
	Outlet B (GPM)	2.2	2.8	3.4	3.9
Separate (A or B Closed)	Outlet A (GPM)	2.5	3.9	4.8	5.5
	Outlet B (GPM)	2.5	3.9	4.8	5.5



FEATURES

Material: Bronze
Length: 4-7/8"
Width: 4-3/8"
Depth: 5-1/2"
NPT Connection: 1/2"

CODES/STANDARDS

cUPC
ASME A112.18.1/CSA B125.1
ASSE 1016 Type P
Massachusetts Accepted

PRODUCT IMAGE



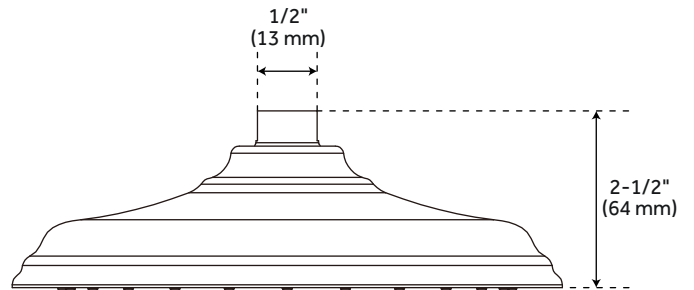
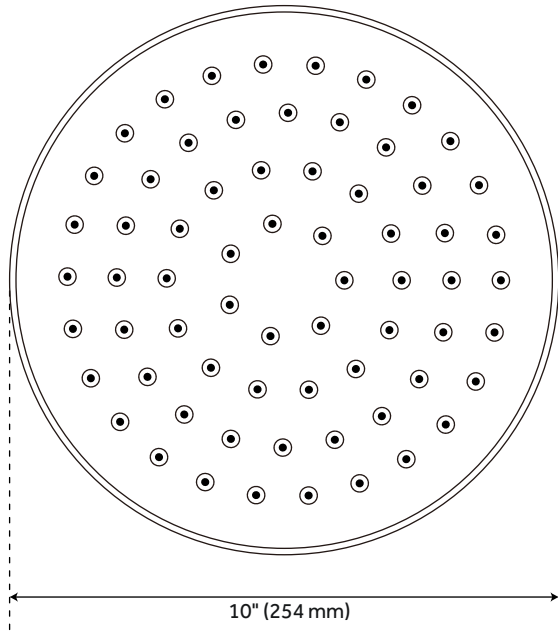
All dimensions and specifications are nominal and may vary. Use actual products for accuracy in critical situations.

PAGE 3
Code: SH5001SS

PINECREST

TRADITIONAL ROUND RAINFALL SHOWER HEAD

SKU: 949738



FEATURES

Material: Stainless Steel
Diameter: 10"
Height: 2-1/2"
1/2" NPT
Shower Head Flow Rate: 1.8 gpm
(6.8 l/min) @ 80 psi

CODES/STANDARDS

cUPC
ASME A112.18.1/CSA B125.1
CEC Listed
Massachusetts Accepted

PRODUCT IMAGE



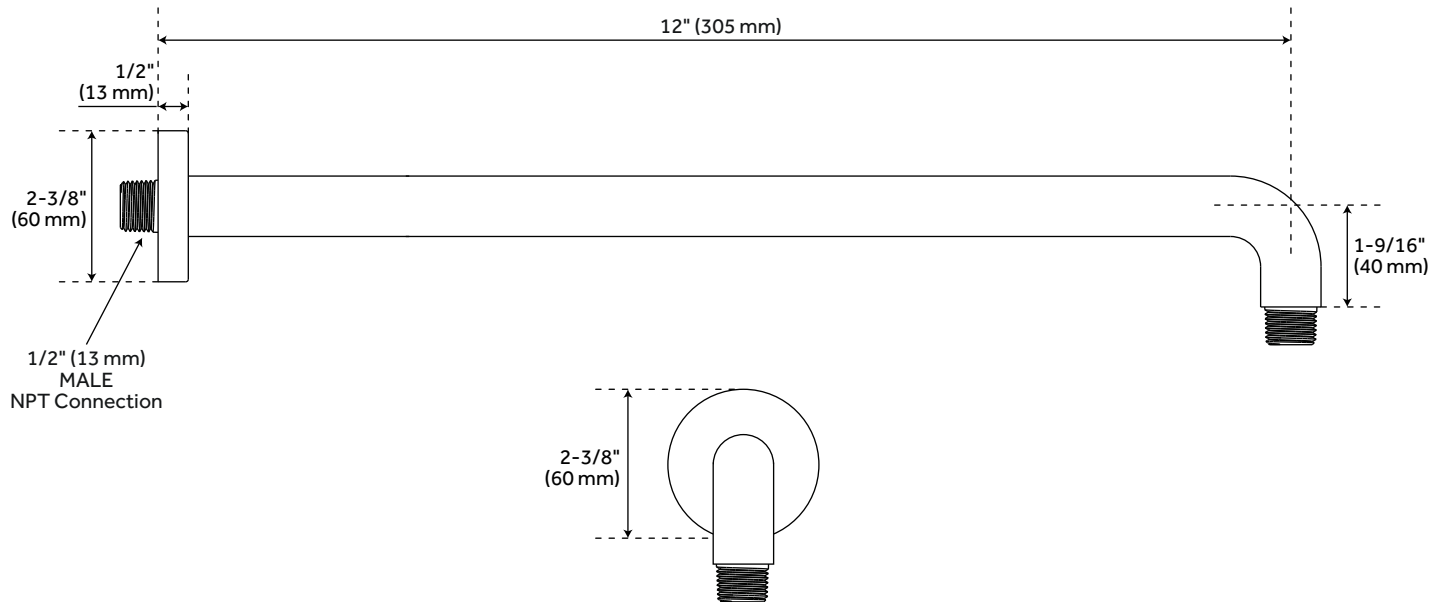
All dimensions and specifications are nominal and may vary. Use actual products for accuracy in critical situations.

PAGE 4
Code: SHRS1020TG

PINECREST

WALL-MOUNT RAINFALL SHOWER ARM

SKU: 949738



FEATURES

Material: Brass
Shower Arm Extension: 12"
Height: 1-9/16"
Base Plate Diameter: 2-3/8"
Escutcheon Included
1/2" NPT

CODES/STANDARDS

cCSAus
ASME A112.18.1/CSA B125.1
Massachusetts Accepted

PRODUCT IMAGE



All dimensions and specifications are nominal and may vary. Use actual products for accuracy in critical situations.

PAGE 5
Code: SHRSA120