



RESIN TUB INSTALL

BEFORE YOU BEGIN

We recommend consulting a professional if you are unfamiliar with installing bathroom fixtures and plumbing. Signature Hardware accepts no liability for any damage to the floor, walls, plumbing, or personal injury during installation.

Observe all local plumbing and building codes.

Unpack and inspect the tub for damage. If any damage is found, contact our Customer Relations team at 1-866-855-2284.

GETTING STARTED

- Ensure that you have gathered all of the required materials that are needed for the installation.
- Ensure that your bathroom floor is adequately supported, and the finished floor is level.
- Keep the plumbing connections around the tub easily accessible for any future maintenance that may be necessary.

PLANNING

Use the tub's PDF specification sheet as a reference when planning your layout. The specification sheet can be found and downloaded from the product page on our website.

Because the tub specification measurements are approximate and slight variations may occur, we highly recommend performing any rough-in procedures with the faucet on site. For rough-in information, go to the appropriate drain installation section.

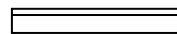
TOOLS AND MATERIALS:



Marker



Tape Measure



Straight Edge



Metal Blade
Hacksaw



Thread Sealant



Plumber's Tape



Adjustable
Wrench



Neutral Cure
Silicone Sealant



PVC Primer
and Cement



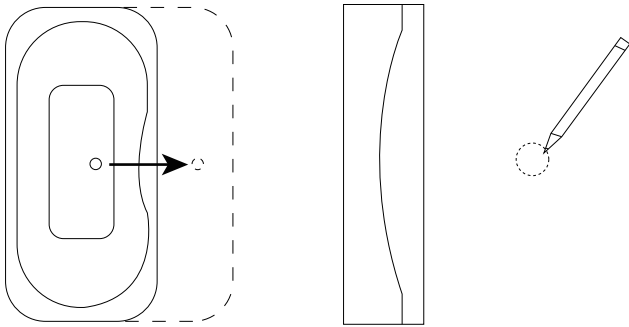
Damp Cloth



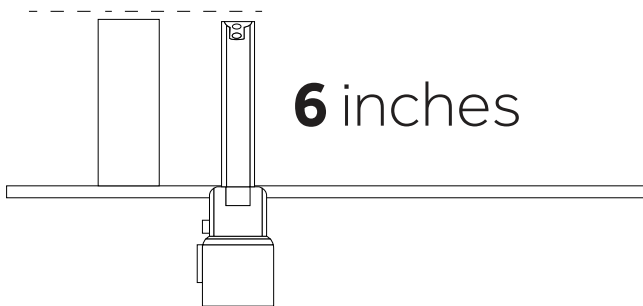
RESIN TUB INSTALL

INSTALLATION

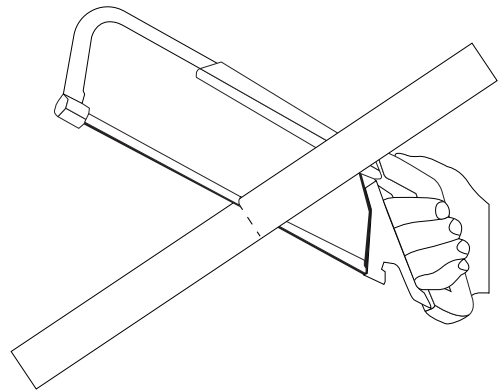
1. Set the tub in the desired installation location and mark the drain hole location on the floor.



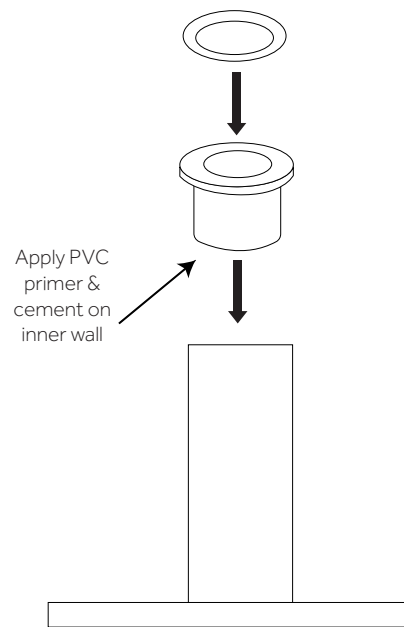
2. Move the tub away from the installation location so that the plumbing can be installed. The drain pipe should extend approximately 6" above the finished floor.



3. Trim the 1-½" PVC drain pipe extending from the floor to the appropriate length. This can be determined by attaching the drain to the tub and measuring the distance from the finished floor to the center of the fitting socket.



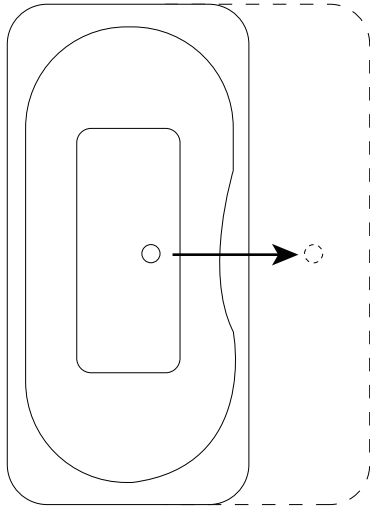
4. Attach the drain's hub adapter to the PVC pipe with PVC primer and cement. Place the rubber washer on the rim of the adapter.



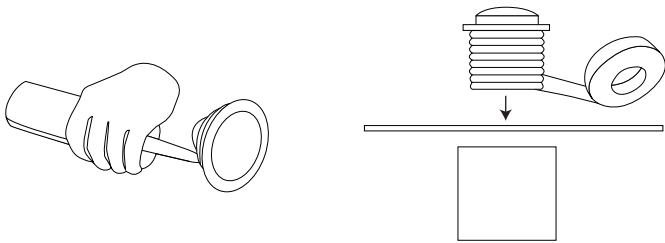


RESIN TUB INSTALL

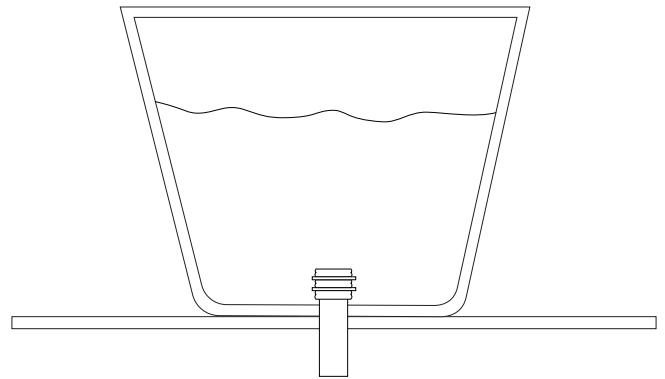
5. Carefully set the tub into position over the drain.



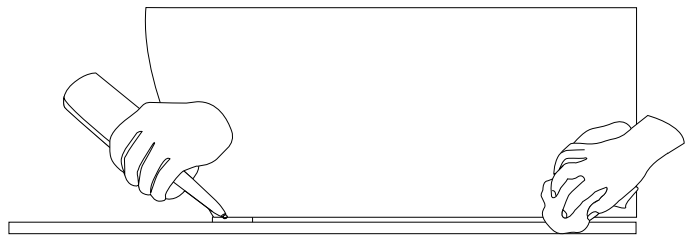
6. Apply 100% neutral cure silicone sealant to the underside of the drain flange and thread it through the tub and into the drain pipe. Apply thread sealant or plumber's tape to the threaded connection to ensure a water-tight seal. Tighten by hand. Wipe away any excess sealant using a damp cloth.



7. Fill the tub with water to check for any leaks from the connections. Verify that the drain is working properly.



8. Finish your installation by running a bead of neutral cure silicone sealant around the base of the tub where it meets the floor. Wipe away any excess sealant with a damp cloth.





RESIN TUB INSTALL

CLEANING AND MAINTENANCE

Resin has a nonporous surface that makes it resistant to stains, scratches and discoloration. To maintain the condition of your new resin tub, simply wipe the surface with a dry, soft cloth after each use. Most dirt and dust will wash off with clean, warm water. For a more thorough cleaning, be sure to use a mild cleaner such as a gentle dish soap. Avoid any products that contain abrasives, acids, or ammonia.

SCRATCH REMOVAL

1. Use warm water to remove dirt and dust from the surface.
2. Use #800 sandpaper (coarse-grit) and rub in small, circular motions until the scratch is gone.
3. Follow with #1200 sandpaper (fine-grit) and rub over the surface of the scratch to smooth and blend.
4. Dry with a towel.
5. Polish the surface with a cloth and a polishing compound. Any automobile polishing compound will suffice.