



## INSTALLATION INSTRUCTIONS

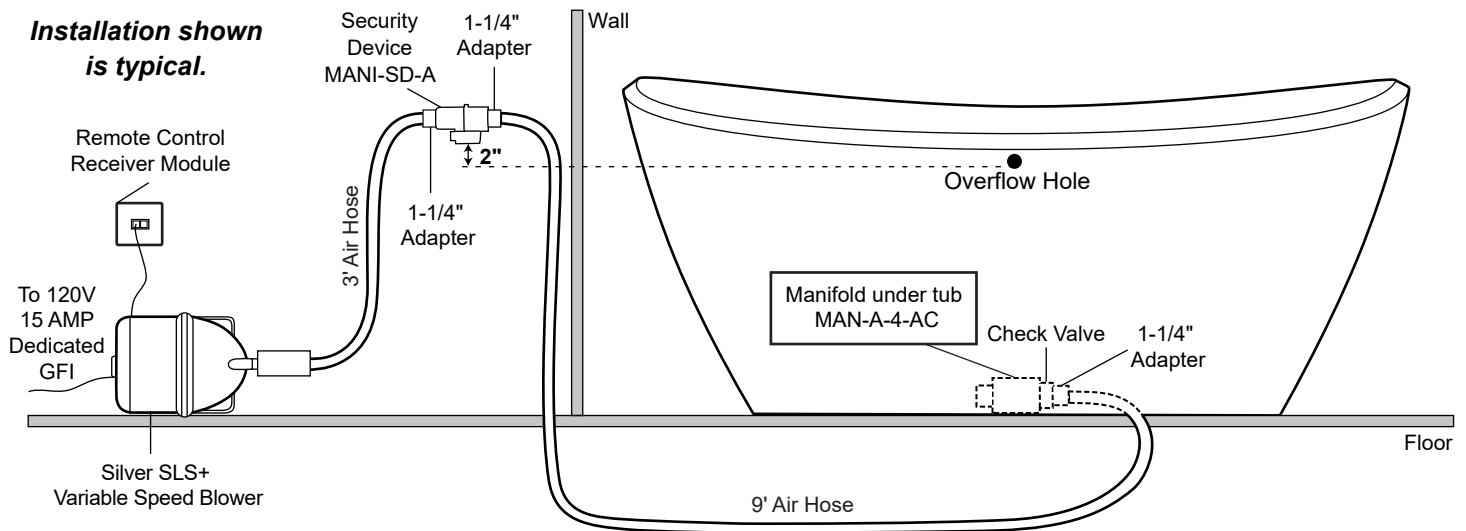
### Components List:

- BM-TWP Ball Check Valve Jets
- MANI-SD-A Security Device
- MAN-A-4-AC Manifold
- Silver SLS+ Variable Speed Blower

Install blower behind a wall (with an access panel) or in a closet. Blower can also be installed under floor. Ensure the Security device, MANI-SD-A, is at least 2" above the bottom of overflow hole. Security device and hose can be mounted in wall.

## Winifred Resin Air Tub - With Overflow

### Installation shown is typical.



### INSIDE OF BATH TUB

### Features:

- (12) Maxi Air Jets with 24 openings



Elbows for air jets

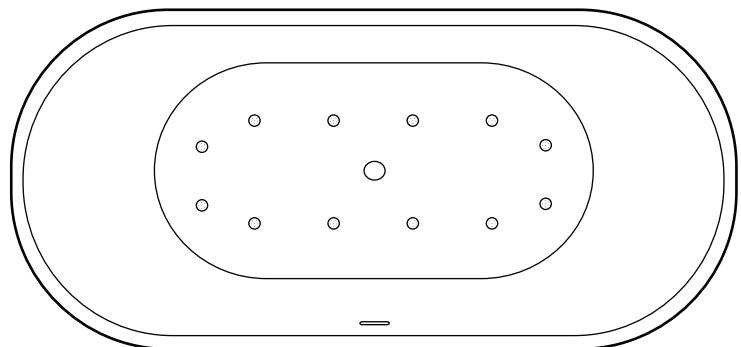


Tees for air jets

- Remote Control CG+/RTC-SENSOR-WP



12-15 year battery life





## INSTALLATION INSTRUCTIONS

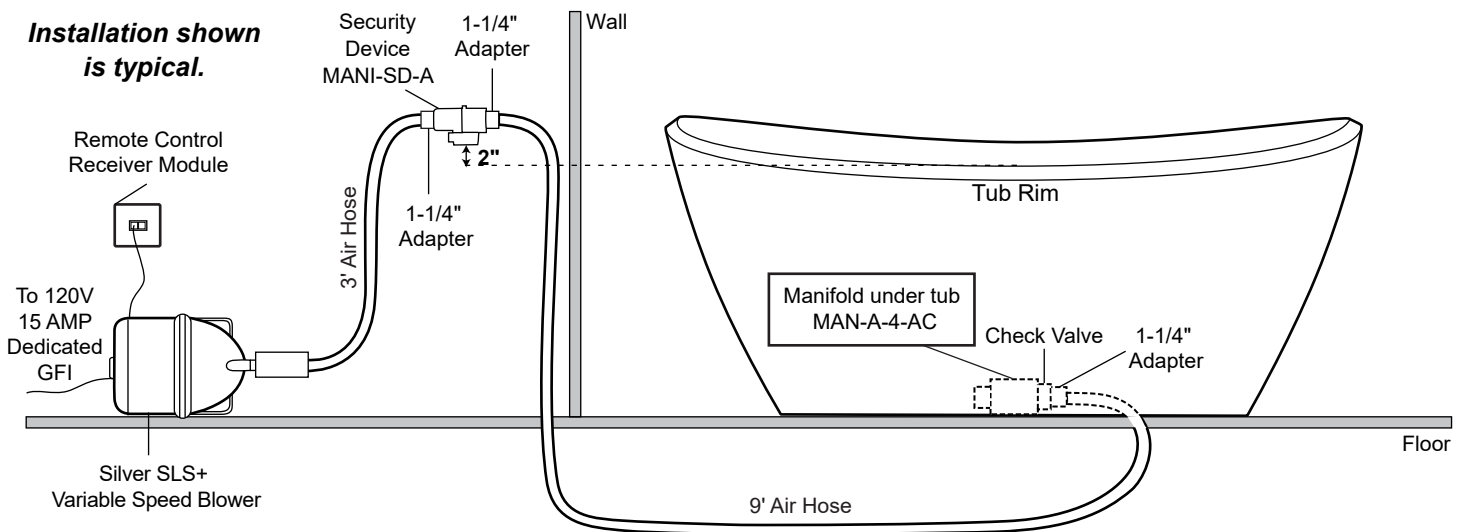
### Components List:

- BM-TWP Ball Check Valve Jets
- MANI-SD-A Security Device
- MAN-A-4-AC Manifold
- Silver SLS+ Variable Speed Blower

Install blower behind a wall (with an access panel) or in a closet. Blower can also be installed under floor. Ensure the Security device, MANI-SD-A, is at least 2" above the tub rim. Security device and hose can be mounted in wall.

## Winifred Resin Air Tub - Without Overflow

### Installation shown is typical.



### INSIDE OF BATH TUB

### Features:

- (12) Maxi Air Jets with 24 openings



Elbows for air jets

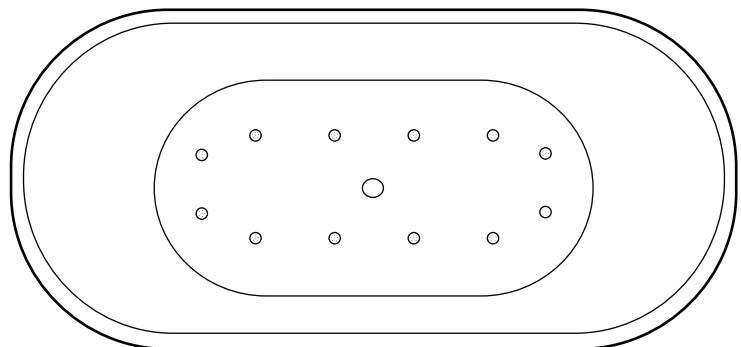


Tees for air jets

- Remote Control CG+/RTC-SENSOR-WP



12-15 year battery life



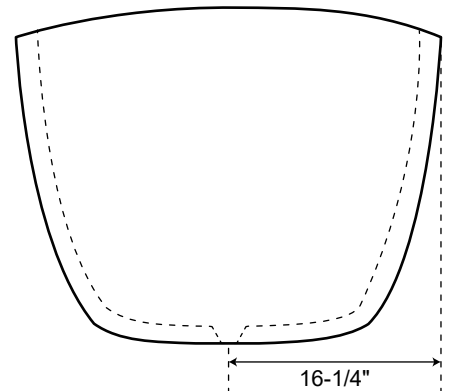
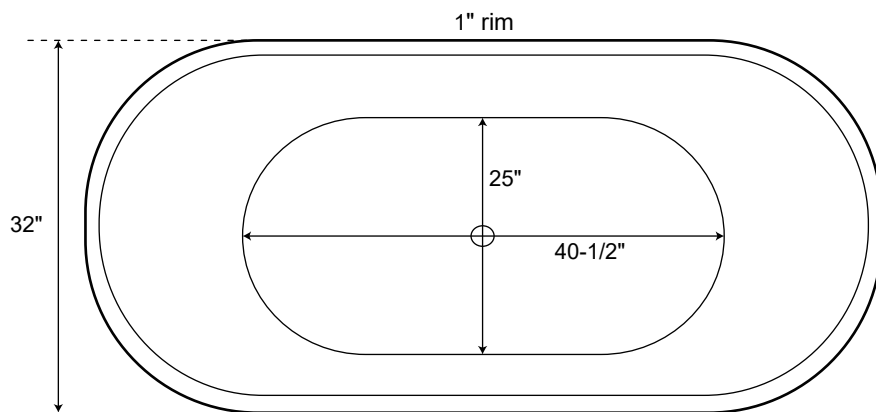
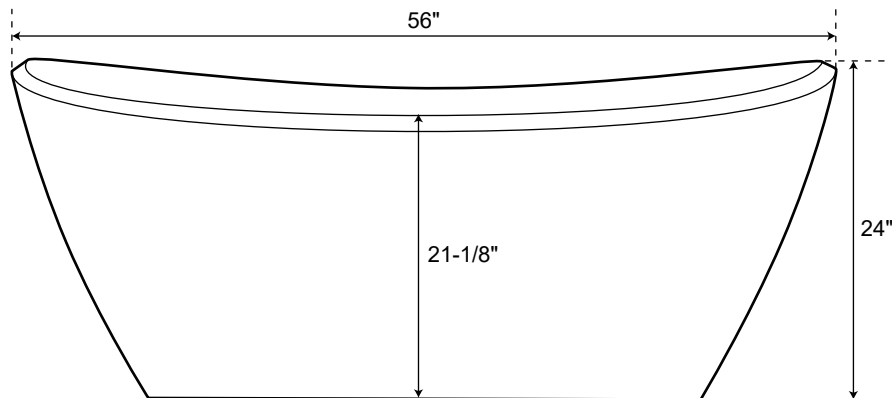


## SPECIFICATIONS

Overall Dimensions	56" L x 32" W (front to back) x 24" H
Water Capacity	
without overflow	N/A
with overflow	59 gallons
Water Depth	
to top of tub	N/A
to overflow	14" H
Tub Weight Uncrated	305 lbs.
Tub Rim	1" wide
Faucet Configurations	No Drillings

## 56" Winifred Resin Air Tub

***All measurements are approximate. Measurements may vary +/- 1".***



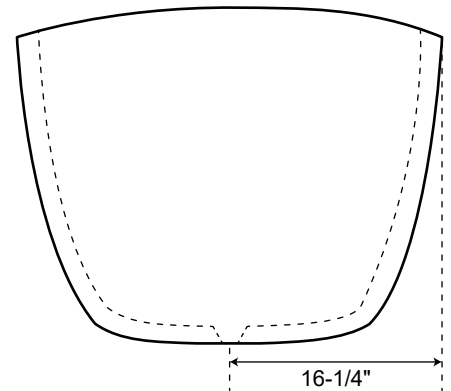
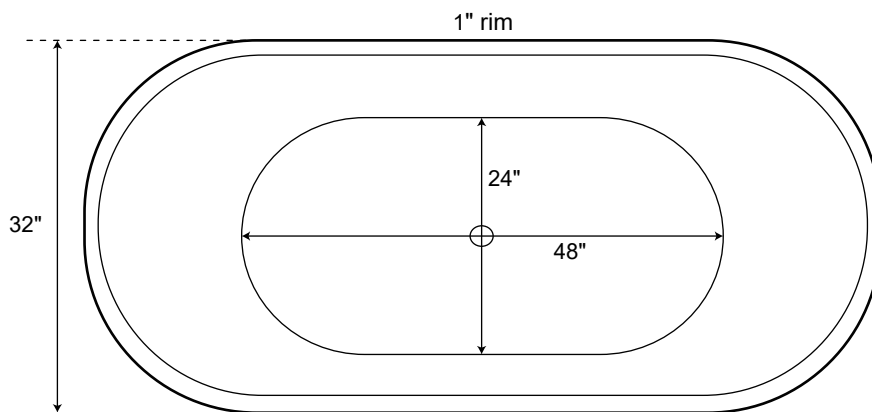
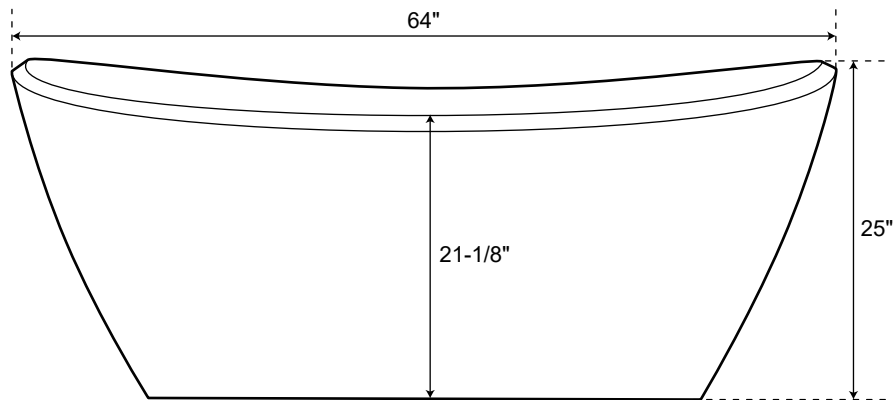


## SPECIFICATIONS

Overall Dimensions	64" L x 32" W (front to back) x 25" H
Water Capacity	
without overflow	N/A
with overflow	72 gallons
Water Depth	
to top of tub	N/A
to overflow	14-1/2" H
Tub Weight Uncrated	309 lbs.
Tub Rim	1" wide
Faucet Configurations	No Drillings

## 64" Winifred Resin Air Tub

***All measurements are approximate. Measurements may vary +/- 1".***





## SPECIFICATIONS

Overall Dimensions	71" L x 33" W (front to back) x 24" H
Water Capacity	
without overflow	N/A
with overflow	82 gallons
Water Depth	
to top of tub	N/A
to overflow	14-1/2" H
Tub Weight Uncrated	407 lbs.
Tub Rim	1" wide
Faucet Configurations	No Drillings

## 71" Winifred Resin Air Tub

***All measurements are approximate. Measurements may vary +/- 1".***

