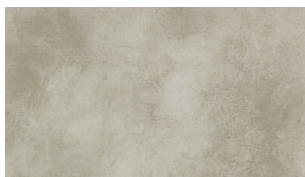


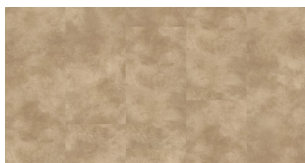
BURNISHED



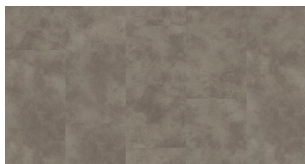
100 Ecrú



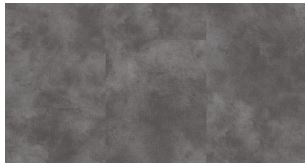
200 Drift



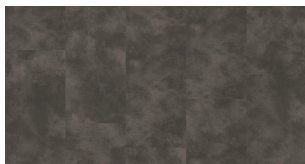
205 Chambray



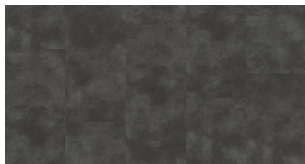
500 Raindrop



510 Titanium



515 Ash



520 Granite



700 Mushroom



200 Drift

BURNISHED

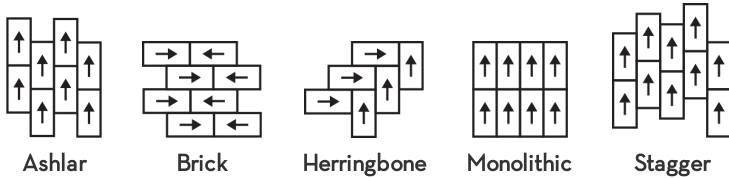
Style Name	BURNISHED	
Style Number	5441V	
Construction	High Performance Luxury Vinyl Tile	
Class / ASTM F1700	Class III Printed Film Vinyl Tile, Type B (embossed)	
Finish	ExoGuard®	
	U.S.	Metric
Nominal Dimensions	12 in w, 24 in l	30.5 cm w, 61 cm l
Actual Dimensions	11.81 in w, 23.62 in l	30 cm w, 59.99 cm l
Wear Layer Thickness	20 mil (0.02 in)	0.51 mm
Overall Thickness	0.098 in	2.5 mm
Installation	Direct Glue	
Recommended / Required Adhesive	Shaw 4100 or S150	



Packaging

Pieces per box	22 pcs	
Area per box	42.63 sq ft	3.96 sq m
Weight per box	37.4 lbs	16.96 kg

Recommended Installation Method



Performance Testing

Resistance to Chemicals (ASTM F925)

Passes

Test Reports may be included or listed by the manufacturing/inventory style number as opposed to the noted selling style number.

Warranties

Commercial Limited Underbed Bond Warranty S150/4151/LokWorx+ Resilient
Resilient 15 Year Commercial Limited

Environmental

Indoor Air Quality
Recycled Content

FloorScore® Certified

Pre-consumer - 0%, Post-consumer - 0%

Specifications are subject to nominal manufacturing variance.
Material supply and/or manufacturing processes may necessitate changes without notice.

