



100 Gulf



500 Pier



200 Tabby

Style Number	CS97W	CS86L	CS85L	CS87L	CS89L	CS91L
<b>Construction</b>	ceramic	ceramic	ceramic	ceramic	ceramic	ceramic
<b>Tile Type</b>	floor	floor tile	floor tile	floor tile	surface bullnose	mosaic
<b>Tile Size</b>	12" x 24"	17" x 17"	13" x 13"	6" x 6"	2.75" x 13"	13" x 13" x 2"

## Technical

<b>Wear Rating Group</b>	4	4	4	4	4	4
<b>Break Strength</b>	> 250	412 lbs	304 lbs	412 lbs	304 lbs	304 lbs
<b>Water Absorption</b>	< 0.60	6%	6%	6%	6%	6%
<b>DCOF</b>	> 0.42	> 0.42	> 0.42	> 0.42	> 0.42	> 0.42
<b>Shade Variation</b>	V3	V3	V3	V3	V3	V3

A DCOF value of > 0.42 is the new standard for tiles specified for commercial application in standard A137.1-2012, Section 9.6. It replaces the SCOF value of > 0.60 referenced in ASTM C1028. For more information on the correlation between the two values and about the DCOF AcuTest visit the Tile Council of North America's website: [www.tcnatile.com](http://www.tcnatile.com)

### MANUFACTURER'S WARNING:

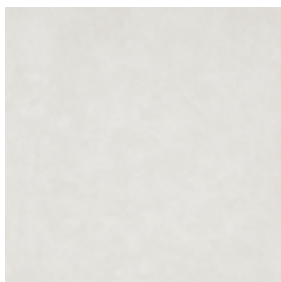
- Tiles with DCOF Acutest values less than .42 are not recommended for use in areas with wet or slippery conditions. If such tiles are used as a walking surface where water, ice, oil, great and/or other substances are present, such a condition could cause a reduction in foot traction and become unexpectedly slippery resulting in a fall and personal injury. See ANSI standard A137.1 section 6.2.2.1.10, available at [www.tcnatile.com/sections6.2.2.1.10.html](http://www.tcnatile.com/sections6.2.2.1.10.html).

- Water, oil, grease, etc. create slippery conditions. Floor applications with exposure to these conditions require extra caution in product selection. Not for use on ramps.

- For additional information, refer to [Factors to Consider](#).

- Since there is a shade variation on all natural products, the tile and trim supplied for your particular installation may not match these samples. Final selection should be made from actual tiles and trim and not from tile and trim samples or color reproductions. Manufactured in accordance with ANSI A137.1 standards.

## Colors



100 Gulf



200 Tabby



500 Pier

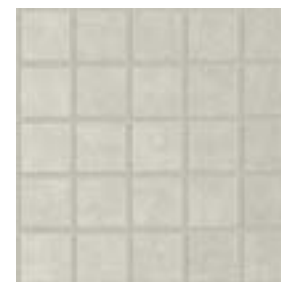
CS91L 13" x 13" x 2" Mosaic



100 Gulf



200 Tabby



500 Pier

## Benefits

