

TILE & STONE

SAN FRANCISCO

color body porcelain

CS64M | 4" x 8" Brick



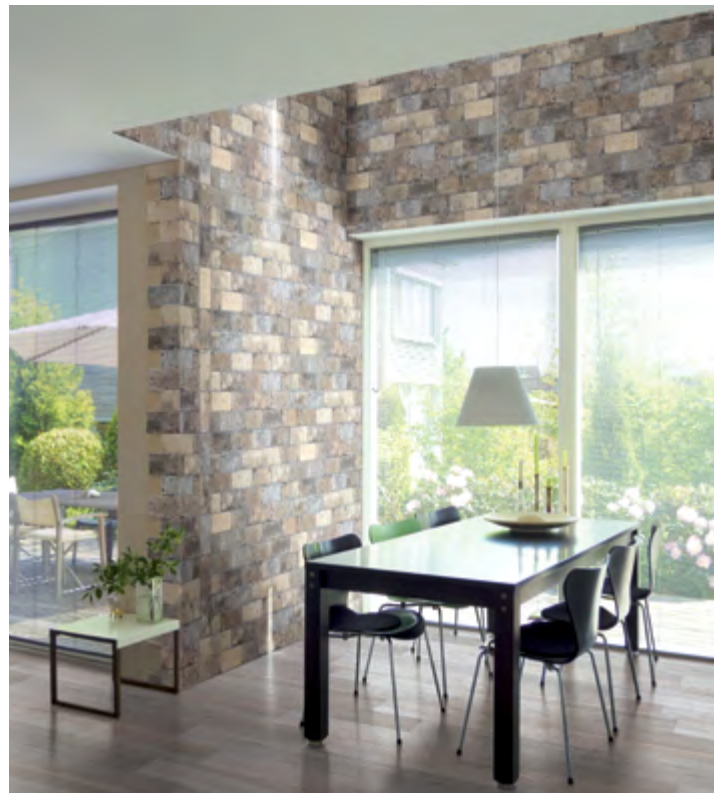
100 Presidio (wall)



500 Lombard (wall)



620 Pacific Heights



720 Nob Hill (wall)

CS65M | 10" x 11" Hexagon



100 Presidio



500 Lombard



620 Pacific Heights



720 Nob Hill

CS76M | Deco Mix



100 Presidio



500 Lombard



620 Pacific Heights



720 Nob Hill

Style Number	CS65M	CS64M	CS76M	CS33H	CS66M	CS67M
Construction	color body porcelain	color body porcelain	color body porcelain	color body porcelain	color body porcelain	color body porcelain
Tile Type	floor	floor	deco mix	bullnose	corner tile	stair tread
Tile Size	9.6" x 11" hexagon	4" x 8" brick	4" x 8"	4" x 8"	4" x 2.6" x 5.4"	4" x 16"

Technical

Wear Rating Group	4	4	4	4	4	4
Break Strength	> 500	> 500	> 500	> 500	> 500	> 500
Water Absorption	< 0.5	< 0.5	< 0.5	< 0.5	< 0.5	< 0.5
DCOF	> 0.42	> 0.42	> 0.42	> 0.42	> 0.42	> 0.42
Shade Variation	V3	V3	V3	V3	V3	V3

A DCOF value of > 0.42 is the new standard for tiles specified for commercial application in standard A1371-2012, Section 9.6. It replaces the SCOF value of > 0.60 referenced in ASTM C1028. For more information on the correlation between the two values and about the DCOF AcuTest visit the Tile Council of North America's website: www.tcnatile.com

MANUFACTURER'S WARNING:

- Tiles with DCOF AcuTest values less than .42 are not recommended for use in areas with wet or slippery conditions. If such tiles are used as a walking surface where water, ice, oil, grease and/or other substances are present, such a condition could cause a reduction in foot traction and become unexpectedly slippery resulting in a fall and personal injury. See ANSI standard A137.1 section 6.2.2.1.10, available at www.tcnatile.com/sections6.2.2.1.10.html.

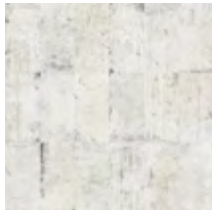
- Water, oil, grease, etc. create slippery conditions. Floor applications with exposure to these conditions require extra caution in product selection. Not for use on ramps.

- For additional information, refer to [Factors to Consider](#).

- Since there is a shade variation on all natural products, the tile and trim supplied for your particular installation may not match these samples. Final selection should be made from actual tiles and trim and not from tile and trim samples or color reproductions. Manufactured in accordance with ANSI A137.1 standards.

Colors

CS64M 4" x 8" brick

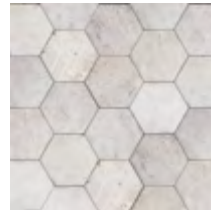


100 Presidio

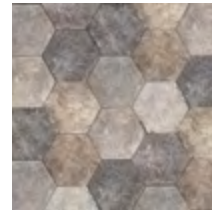


500 Lombard

CS65M hexagon



100 Presidio



500 Lombard

CS76M deco mix



100 Presidio



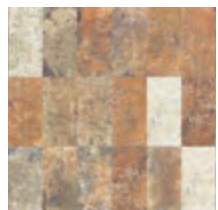
500 Lombard



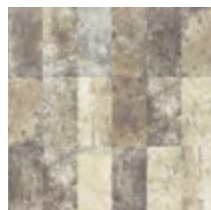
620 Pacific Heights



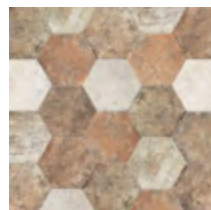
720 Nob Hill



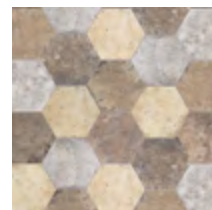
620 Pacific Heights



720 Nob Hill



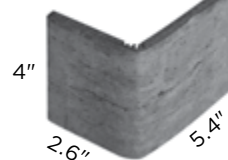
620 Pacific Heights



720 Nob Hill

Trims available in all colors

CS66M corner



CS67M

Stair tread



Benefits

