

# TILE & STONE

**CROWN**  
porcelain



100 White



200 Beige



550 Smoke



500 Grey

Style Number	224TS	225TS	226TS	242TS	227TS	228TS
<b>Construction</b>	porcelain	porcelain	porcelain	porcelain	porcelain	porcelain
<b>Tile Type</b>	floor tile	floor tile	floor tile	hexagon mosaic	bullnose	mosaic
<b>Tile Size</b>	13" x 13"	18" x 18"	12" x 24"	13" x 13"	2.75" x 13"	13" x 13"

## Technical

<b>Wear Rating Group</b>	Multiple*	Multiple*	Multiple*	Multiple*	Multiple*	Multiple*
<b>Break Strength</b>	> 292	> 337	> 405	N/A	> 292	> 292
<b>Water Absorption %</b>	≤ 0.3	≤ 0.3	≤ 0.3	≤ 0.3	≤ 0.3	≤ 0.3
<b>DCOF</b>	≥ 0.42	≥ 0.42	≥ 0.42	≥ 0.42	≥ 0.42	≥ 0.42
<b>Shade Variation</b>	V2	V2	V2	V2	V2	V2
<b>Installation Area</b>	Floors, Walls, Exteriors	Floors, Walls, Exteriors	Floors, Walls, Exteriors	Floors, Walls, Exteriors	Floors, Walls, Exteriors	Floors, Walls, Exteriors

\* color 100 - 4; other colors - 3

A DCOF value of >0.42 is the new standard for tiles specified for commercial application in standard A1371-2012, Section 9.6. It replaces the SCOF value of >0.60 referenced in ASTM C1028. For more information on the correlation between the two values and about the DCOF AcuTest visit the Tile Council of North America's website: [www.tcnatile.com](http://www.tcnatile.com)

### MANUFACTURER'S WARNING:

- Tiles with DCOF AcuTest values less than 0.42 are not recommended for use in areas with wet or slippery conditions. If such tiles are used as a walking surface where water, ice, oil, grease and/or other substances are present, such a condition could cause a reduction in foot traction and become unexpectedly slippery resulting in a fall and personal injury. See ANSI standard A137.1 section 6.2.2.1.10, available at [www.tcnatile.com/sections6.2.2.1.10.html](http://www.tcnatile.com/sections6.2.2.1.10.html).
- Water, oil, grease, etc. create slippery conditions. Floor applications with exposure to these conditions require extra caution in product selection. Not for use on ramps.
- Since there is a shade variation on all natural products, the tile and trim supplied for your particular installation may not match these samples. Final selection should be made from actual tiles and trim and not from tile and trim samples or color reproductions. Manufactured in accordance with ANSI A137.1 standards.

## Colors



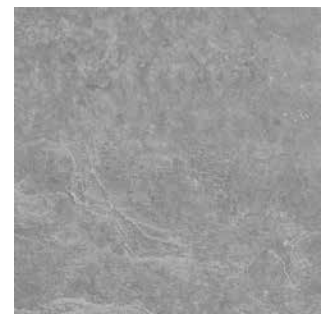
100 White



200 Beige



500 Grey



550 Smoke

