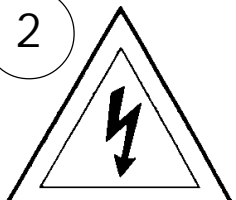


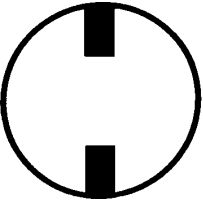
Instructions for electrician
STEPS 2 - 9

WARNING:

2

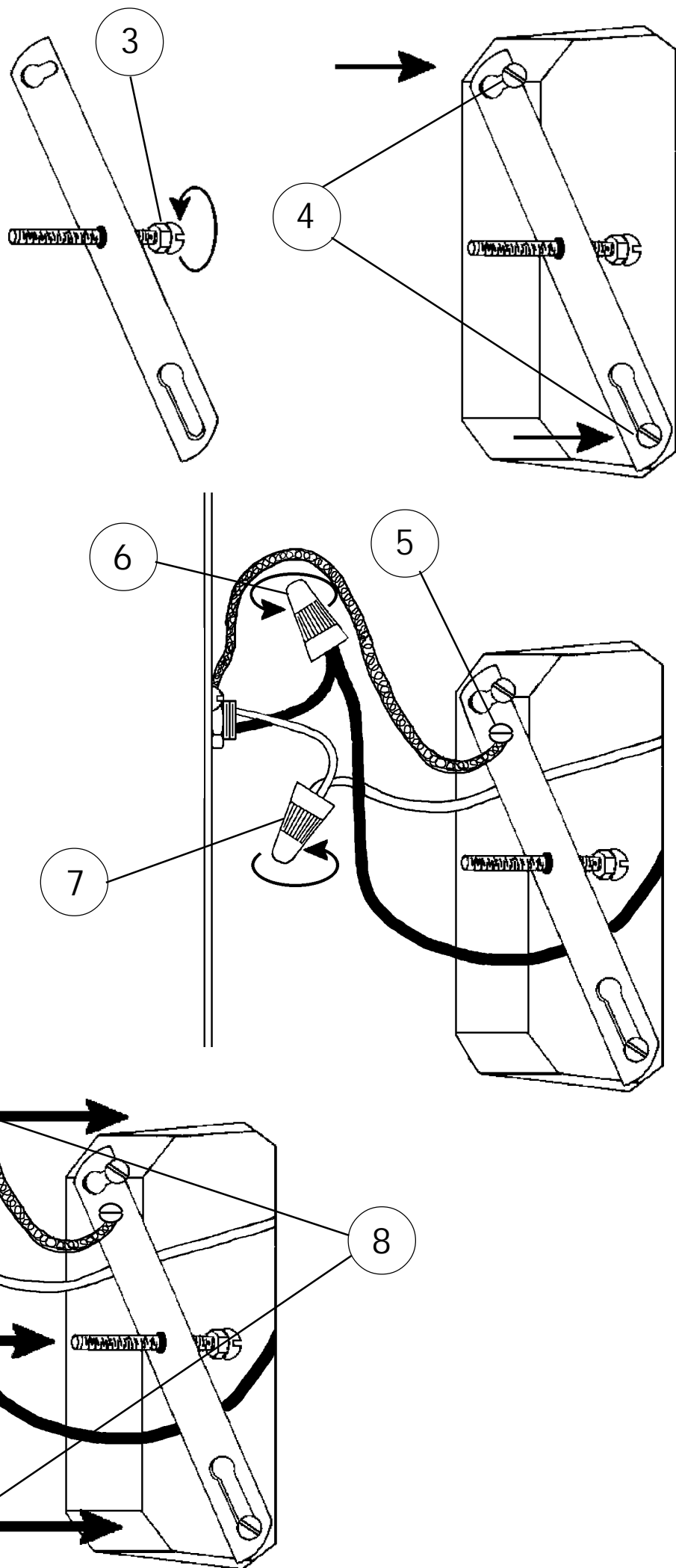


Electrical Danger

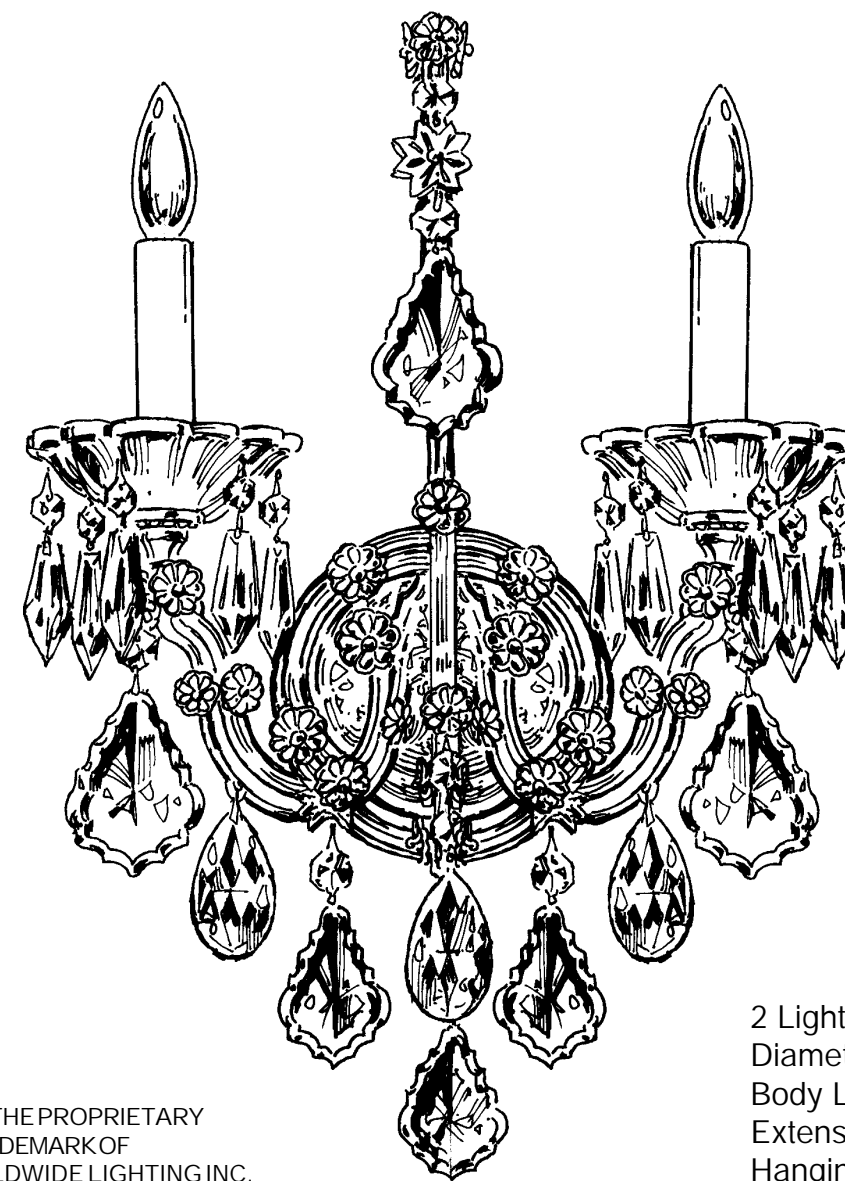


Turn Power Off

All electrical components must be installed by a licensed electrician in accordance with the National Electric Code and the appropriate local electrical codes.



CHANDELIER 5601- ____ TRIM DIAGRAM
(Finish Option)



2 Lights
Diameter: 13-1/2"
Body Length: 18"
Extension: 7-1/2"
Hanging Weight: 6 lbs.

THIS DESIGN IS THE PROPRIETARY TRADE DRESS/TRADE MARK OF SCHONBEK WORLDWIDE LIGHTING INC.

SCHONBEK®

See diagram on back page
Follow steps in exact order
Save this trim diagram for future reference

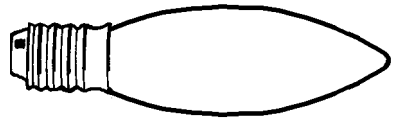
IMPORTANT

1 Person who opens carton should record the following information for future service.

CODE # _____ Four-digit number on outside of carton.
PACKER # _____ See crystal package label.
ORDER # _____ See crystal package label.

Instructions for crystal trimming

STEPS 10 - 18



You will need 2 - C10
25 Watts Recommended
60 Watts Max

10

Install bulbs and be
sure to test fixture
BEFORE trimming.

FIXTURE INCLUDES:
Hanger Hardware
Trim - Frame

DOES NOT INCLUDE:
C10 - Light Bulbs

