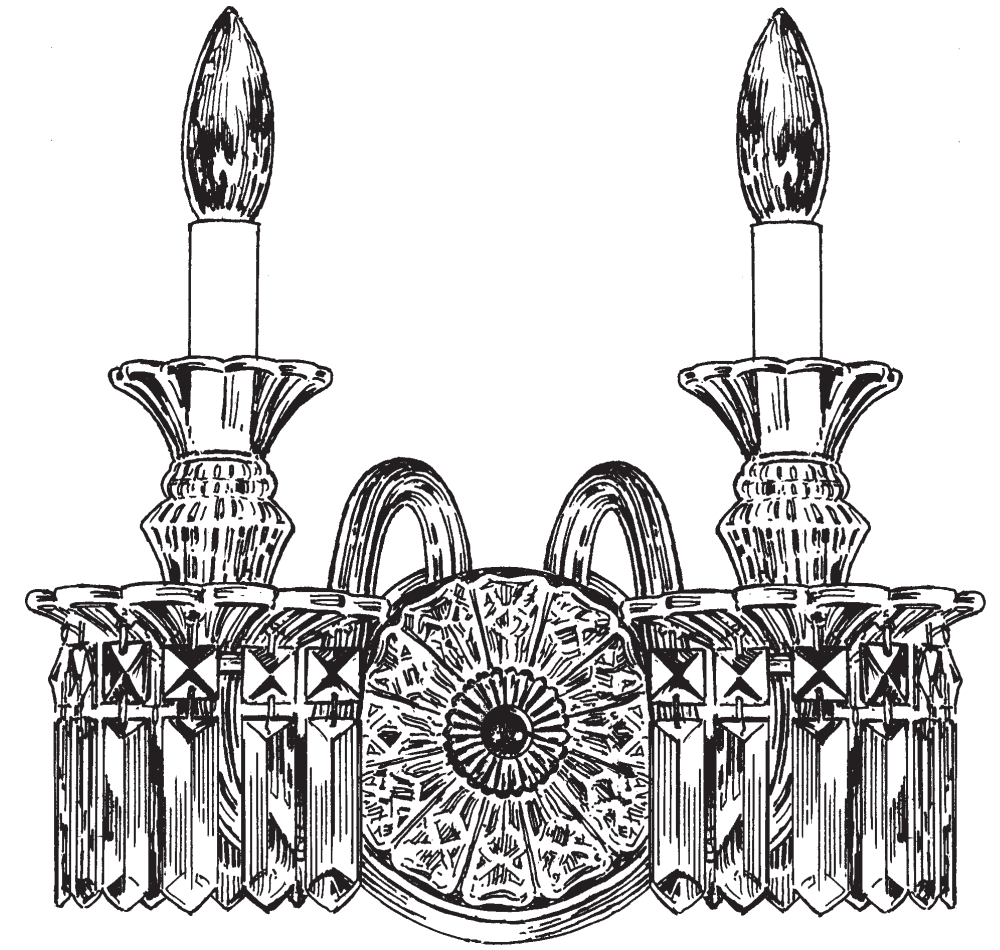




SCHONBEK®

FAIRFAX 5036



2 Lights
Diameter: 13"
Body Length: 12"
Extension: 8"
Hanging Weight: 5 lbs.

THIS DESIGN IS THE PROPRIETARY TRADE DRESS/TRADemark OF SWAROVSKI LIGHTING, LTD.

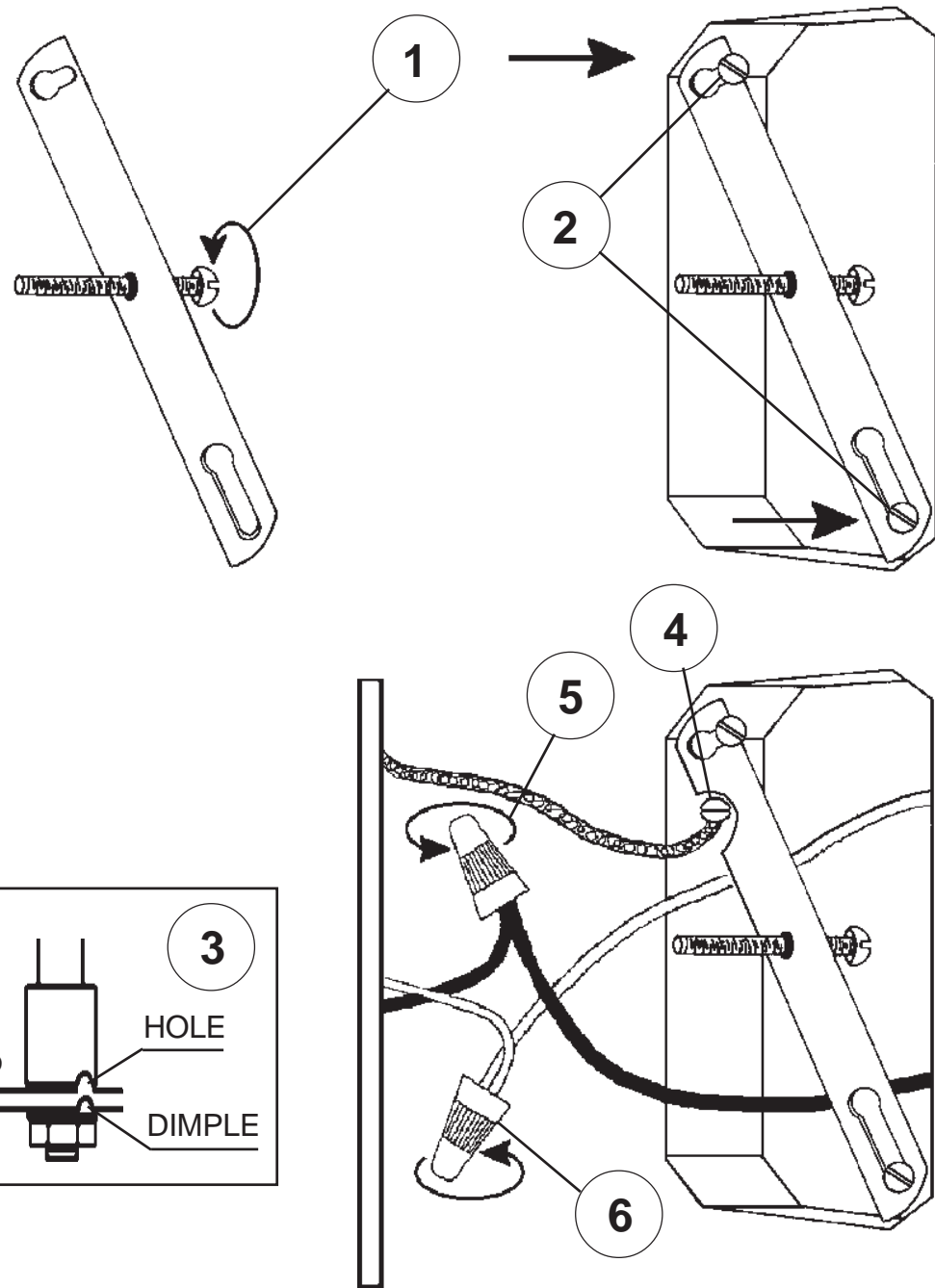


SCHONBEK®

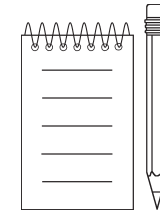
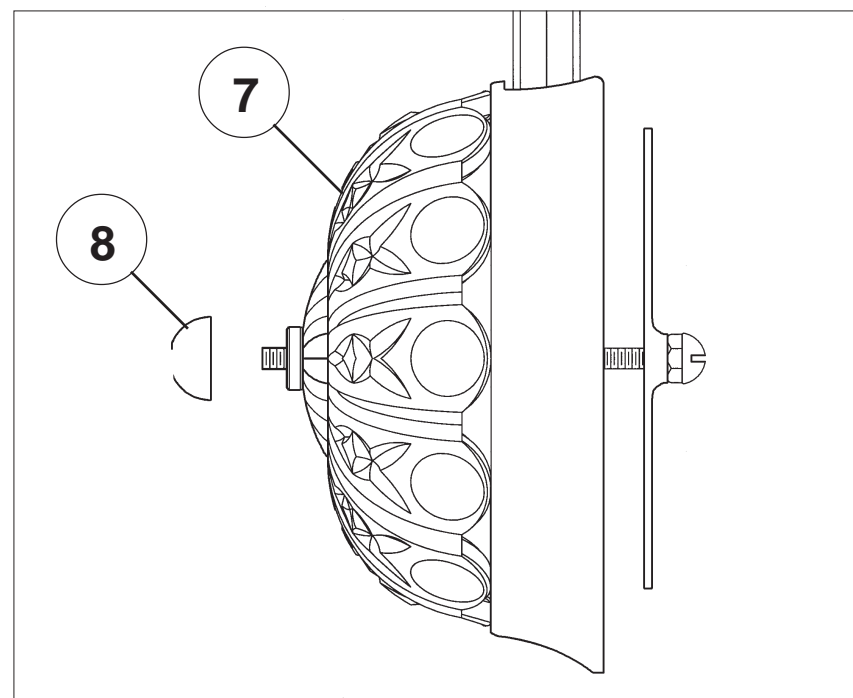
MAX 60 W		110-120 V					

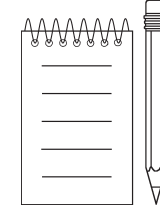
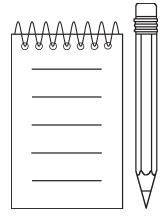
SCHONBEK® is a member of the Swarovski group.

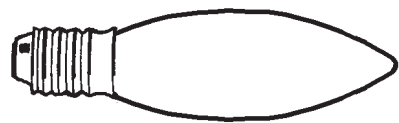
All electrical components must be installed by a licensed electrician in accordance with the National Electric Code and the appropriate local electrical codes.



Turn arms to line up holes in arms with dimple in plate. Tighten lock washer and nut to secure arms in place.







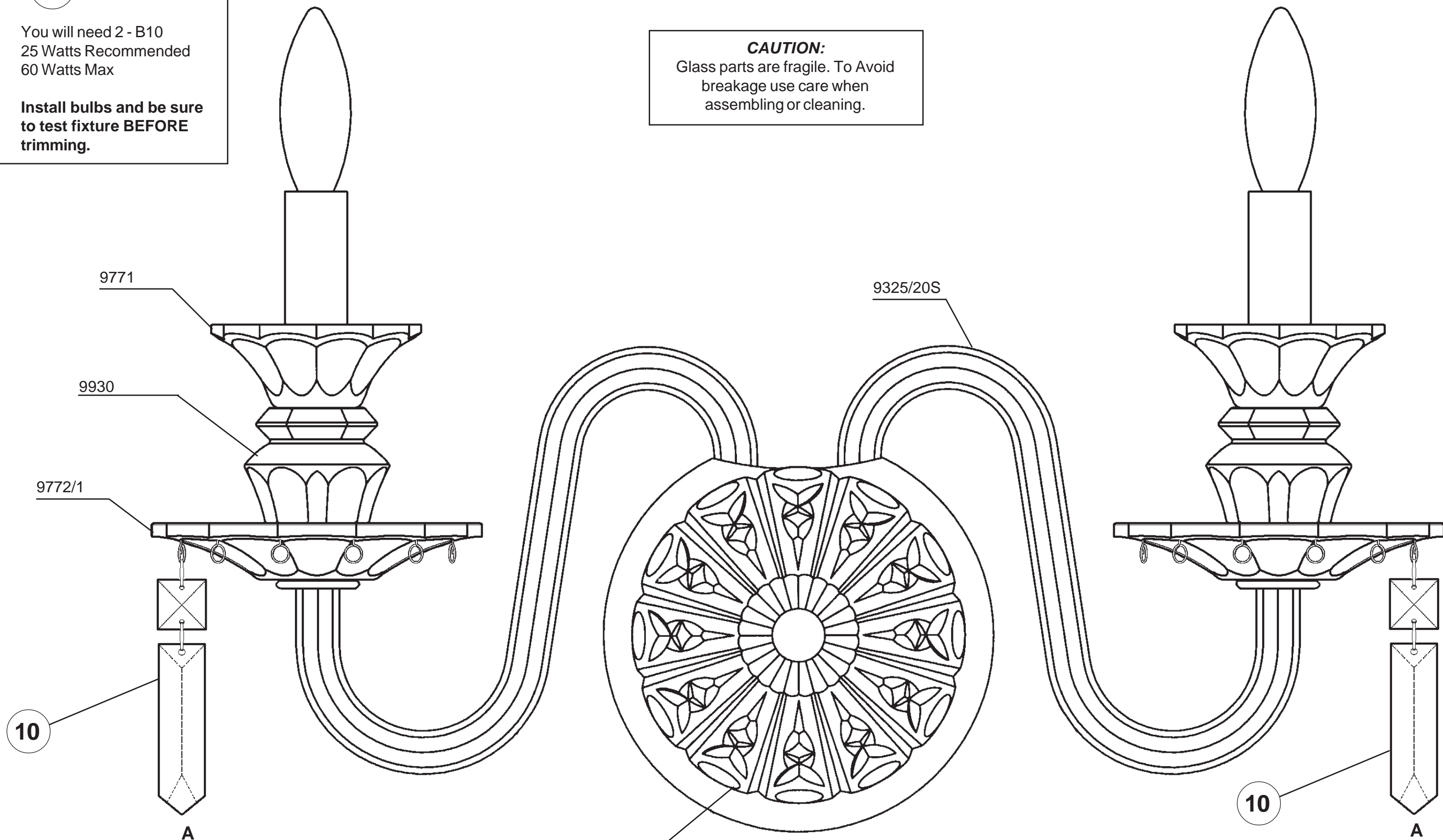
9

You will need 2 - B10
25 Watts Recommended
60 Watts Max

Install bulbs and be sure
to test fixture BEFORE
trimming.

CAUTION:

Glass parts are fragile. To Avoid
breakage use care when
assembling or cleaning.



NOTE: There will be no Crystal
"A" hung where the arm is
because it will hit the arm.

