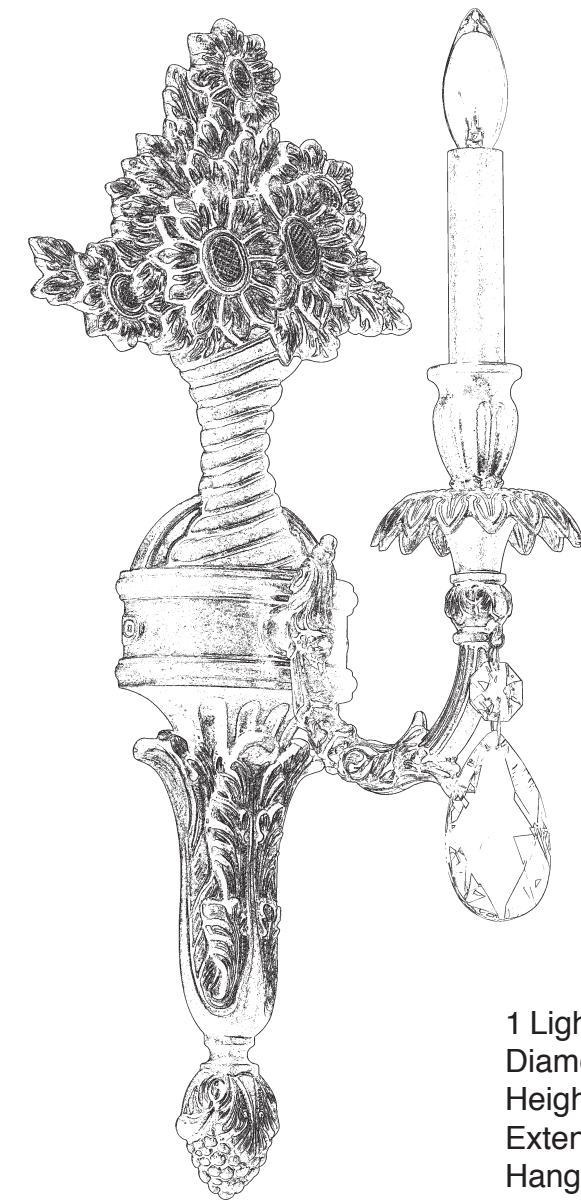


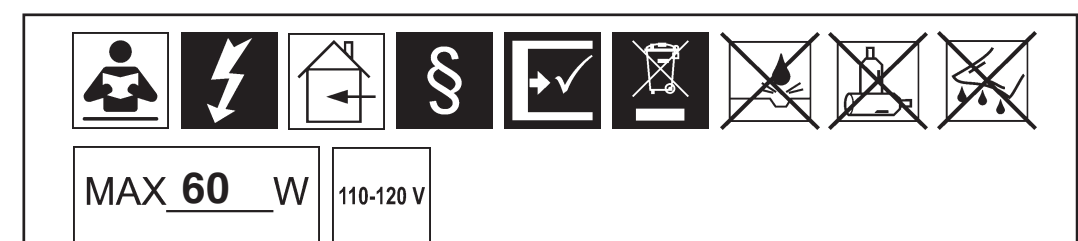


GENZANO GE4701N- _ _ _ _



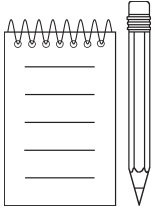
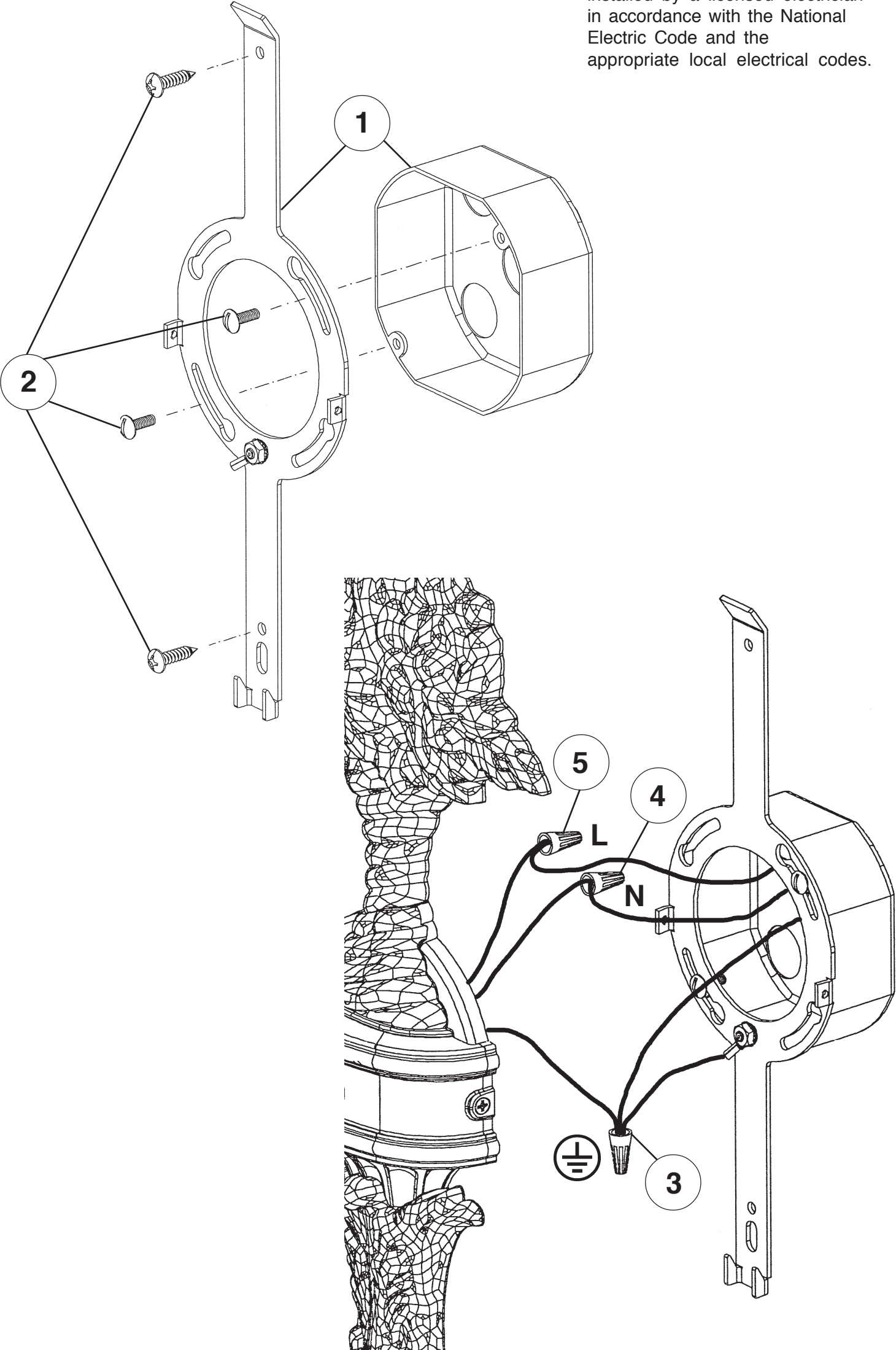
THIS DESIGN IS THE PROPRIETARY
TRADE DRESS/TRADEMARK OF
SWAROVSKI LIGHTING, LTD.

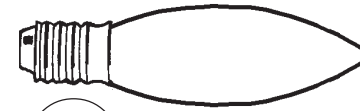
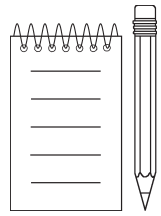
1 Light
Diameter: 7-1/2"
Height: 20"
Extension: 8-1/2"
Hanging Weight: 4lbs.



SCHONBEK® is a member of the Swarovski group.

All electrical components must be installed by a licensed electrician in accordance with the National Electric Code and the appropriate local electrical codes.





8

You will need 1 - B10
25 Watts Recommended
60 Watts Max

**Install bulbs and be sure
to test fixture BEFORE
trimming.**

