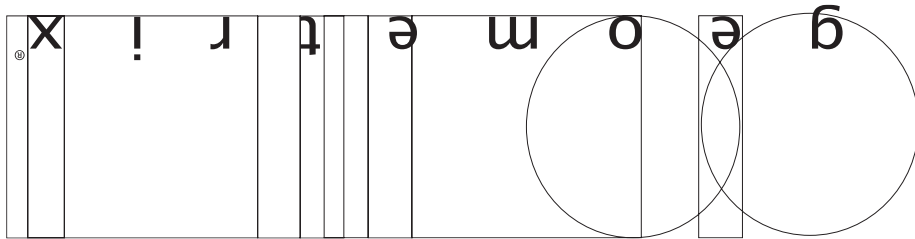




Trim Diagram
Vertex® Pendant VR0607A

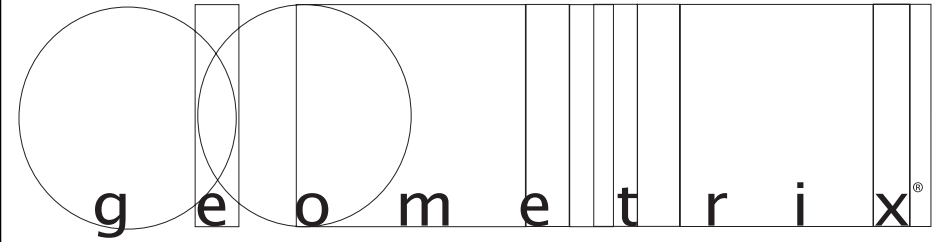
Important: Label on back contains important information on your crystal color. Please save in case you ever need to order matching crystal.



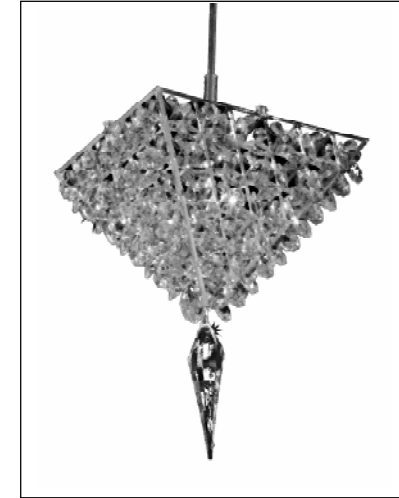
Schonbek Worldwide Lighting Inc., 61 Industrial Blvd., Plattsburgh NY 12901-1908
Tel: 800.836.1892 or 518.563.7500 www.schonbek.com

© 2009 SCHONBEK WORLDWIDE LIGHTING INC., A. SCHONBEK & CO. LTD. WORLDWIDE COPYRIGHT RESERVED

US PATENT #D522,683, #D522,687, #7,101,065, #D532,144, #D560,027 & #7,347,594 / CANADIAN DESIGN © #109752



Trim Diagram
Vertex® Pendant VR0607A



1 Light
5½ x 5½ x 7"

Geometrix™ is designed by Schonbek with Swarovski Spectra® crystal.



This design is the proprietary trade dress/trademark of Schonbek Worldwide Lighting Inc.

Please save your trim diagram for future reference.

IMPORTANT: Label on back contains important information on your crystal. Please save in case you ever need to order matching crystal.



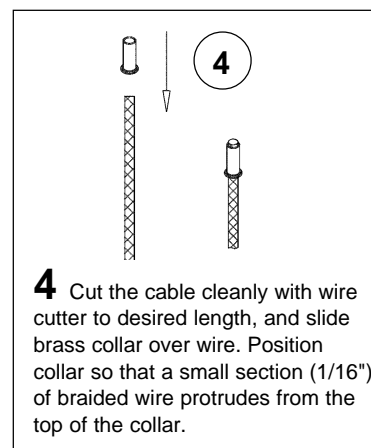


How to Install Xenon Bulb and Vertex® Pendant:

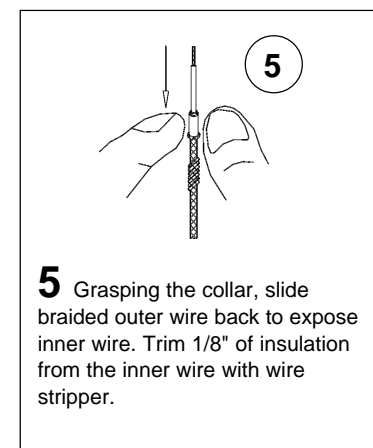
Pendants may be mounted to monorail systems, monopoints or line voltage track by coupling to the quick connect transformer adapter. Attached to the socket is a cable that may be cut on site during installation to any length (see instructions below).

- 1** Plug bulb carefully but completely into socket. Use a Xenon T3 G4 12V bulb.
- 2** Position the cross plate of the pendant against the socket and secure in place by screwing the crystal pyramid onto the socket until tight.
- 3** Attach crystal finial N1096 to bottom point of crystal pyramid by pinching the hanger together and inserting.

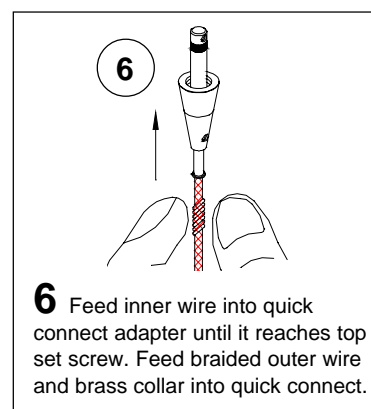
How to Shorten the Cable:



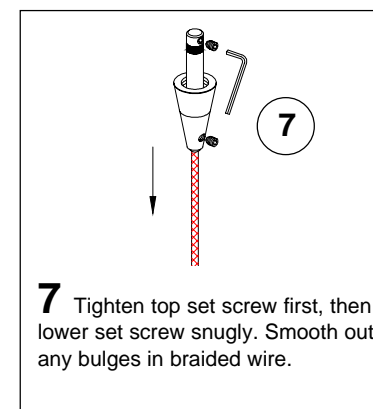
- 4** Cut the cable cleanly with wire cutter to desired length, and slide brass collar over wire. Position collar so that a small section (1/16") of braided wire protrudes from the top of the collar.



- 5** Grasping the collar, slide braided outer wire back to expose inner wire. Trim 1/8" of insulation from the inner wire with wire stripper.



- 6** Feed inner wire into quick connect adapter until it reaches top set screw. Feed braided outer wire and brass collar into quick connect.



- 7** Tighten top set screw first, then lower set screw snugly. Smooth out any bulges in braided wire.

- 8** Screw quick connect into quick connect adapter until it seats. If you adjust the orientation of the pendant, be careful not to loosen the connection.