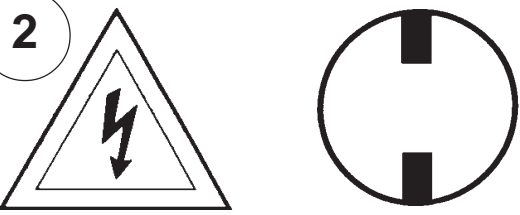


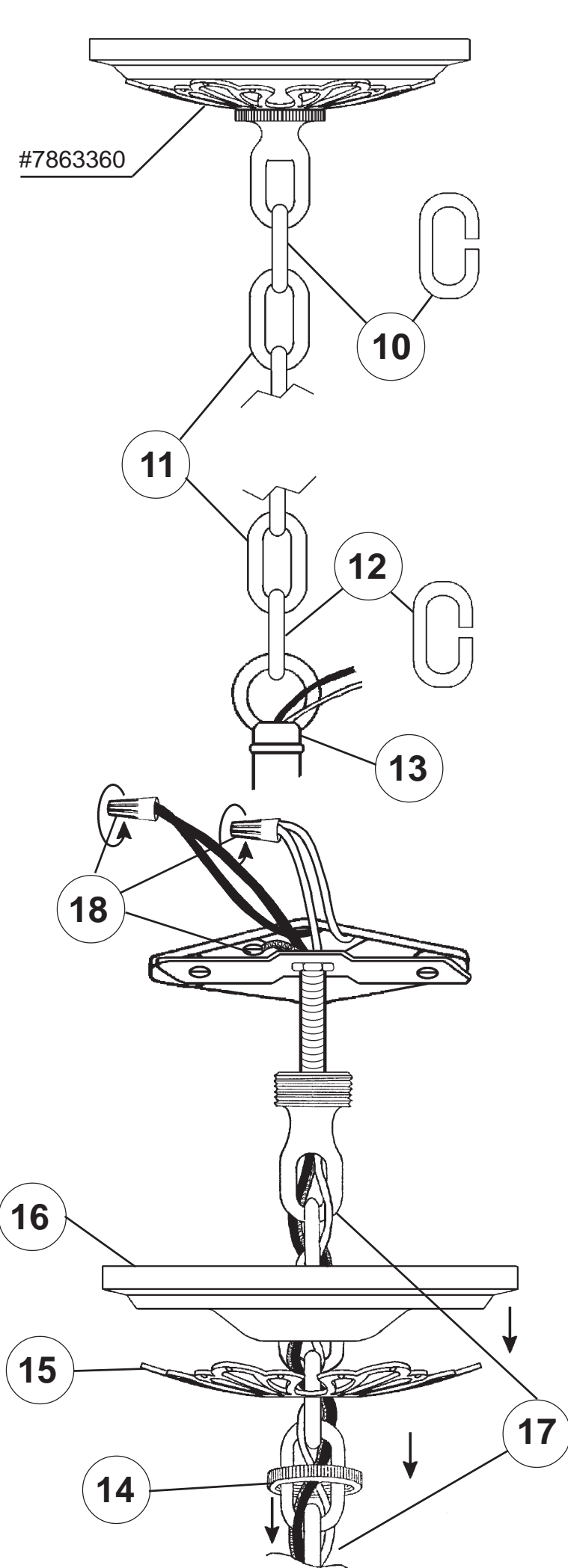
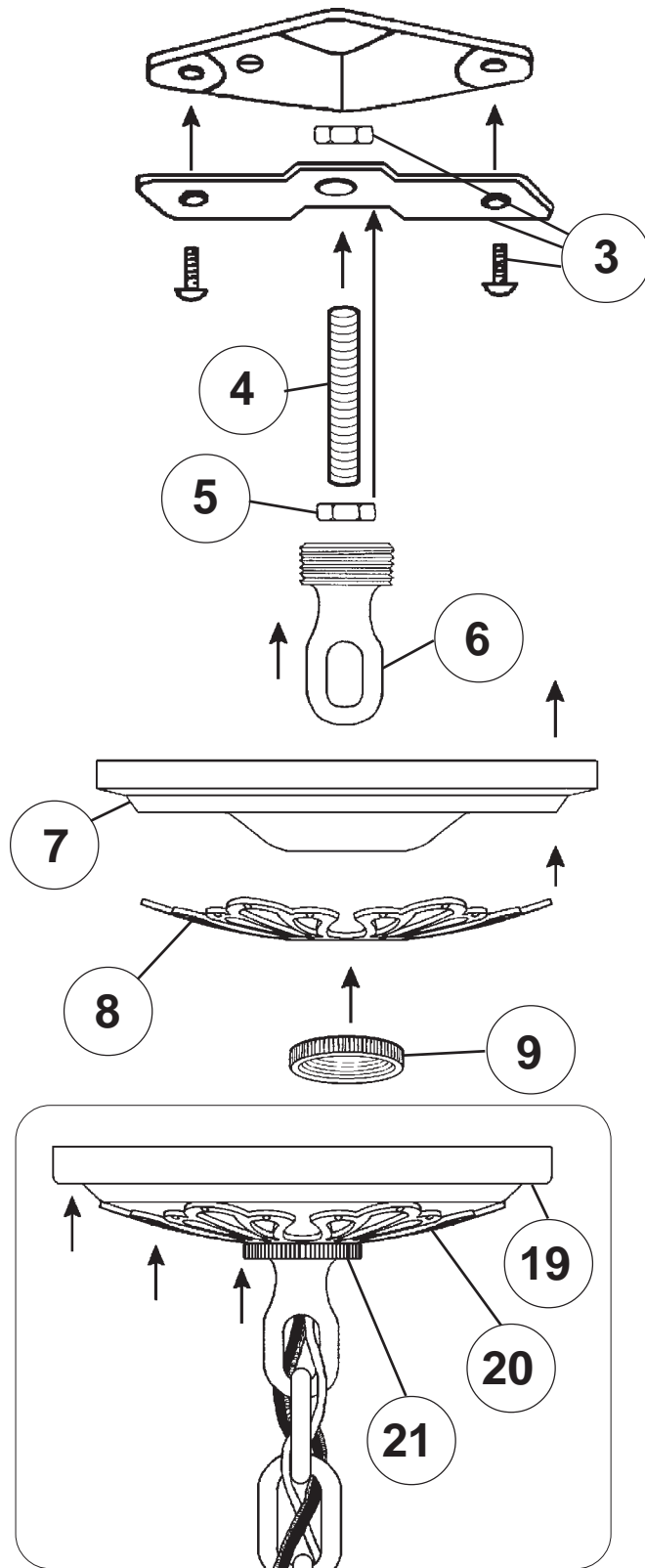
Instructions for electrician
STEPS 2 - 21

WARNING:



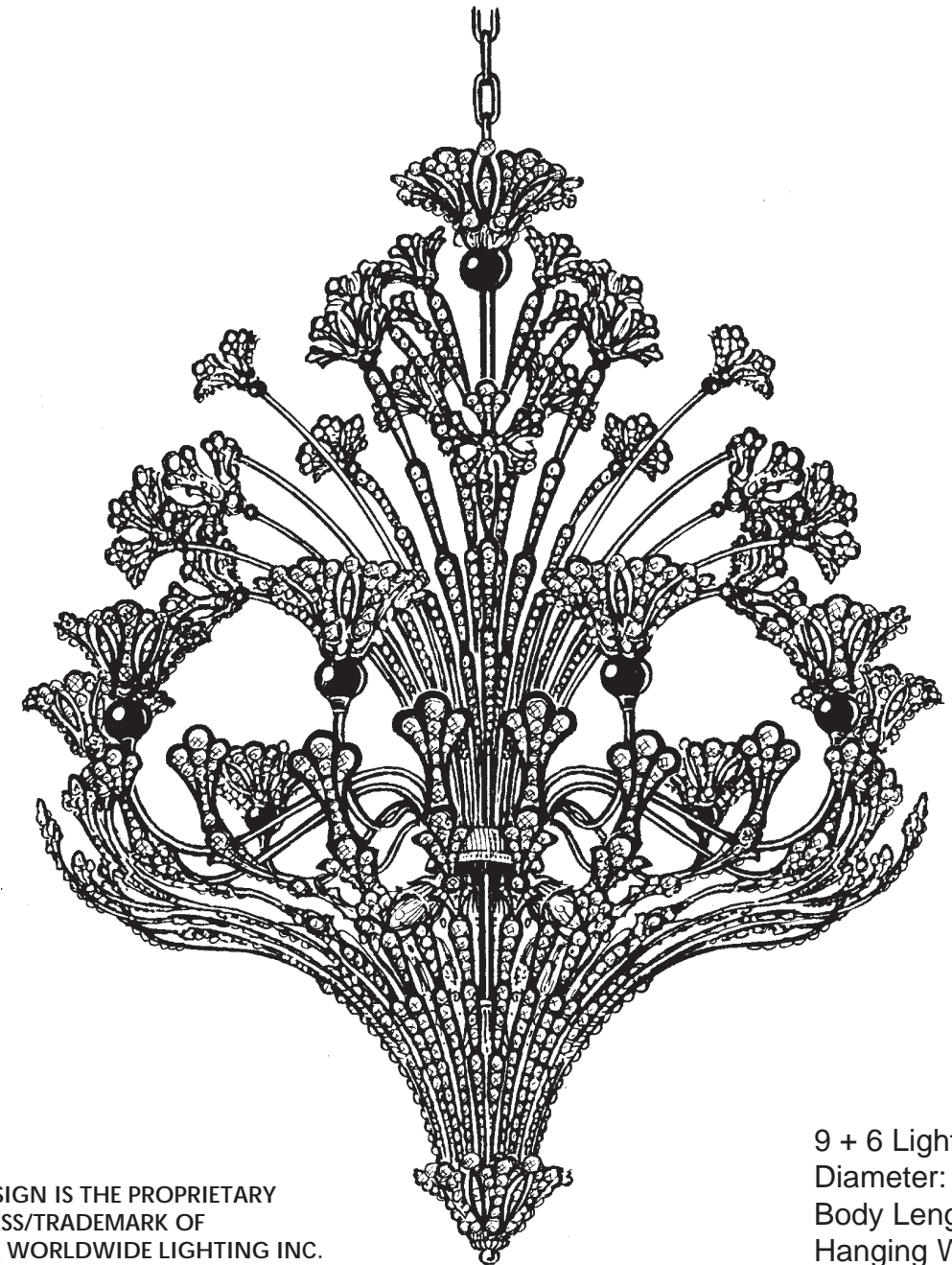
Electrical Danger Turn Power Off

All electrical components must be installed by a licensed electrician in accordance with the National Electric Code and the appropriate local electrical codes.



CHANDELIER 7884-___ A TRIM DIAGRAM

(Finish Option)



THIS DESIGN IS THE PROPRIETARY TRADE DRESS/TRADEMARK OF SCHONBEK WORLDWIDE LIGHTING INC.

9 + 6 Lights
Diameter: 30"
Body Length: 38"
Hanging Weight: 24 lbs.

SCHONBEK®

See diagram on back page
Follow steps in exact order
Save this trim diagram for future reference

1 IMPORTANT
Person who opens carton should record the following information for future service.

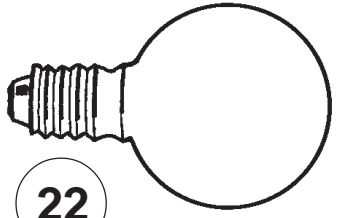
CODE # _____ Four-digit number on outside of carton.
PACKER # _____ See crystal package label.
ORDER # _____ See crystal package label.

SCHONBEK IS A WORLD LEADER IN CHANDELIER DESIGN. PATENTS INCLUDE:
#D5,460,269, #D382,077, #D397,495 & #D435,686

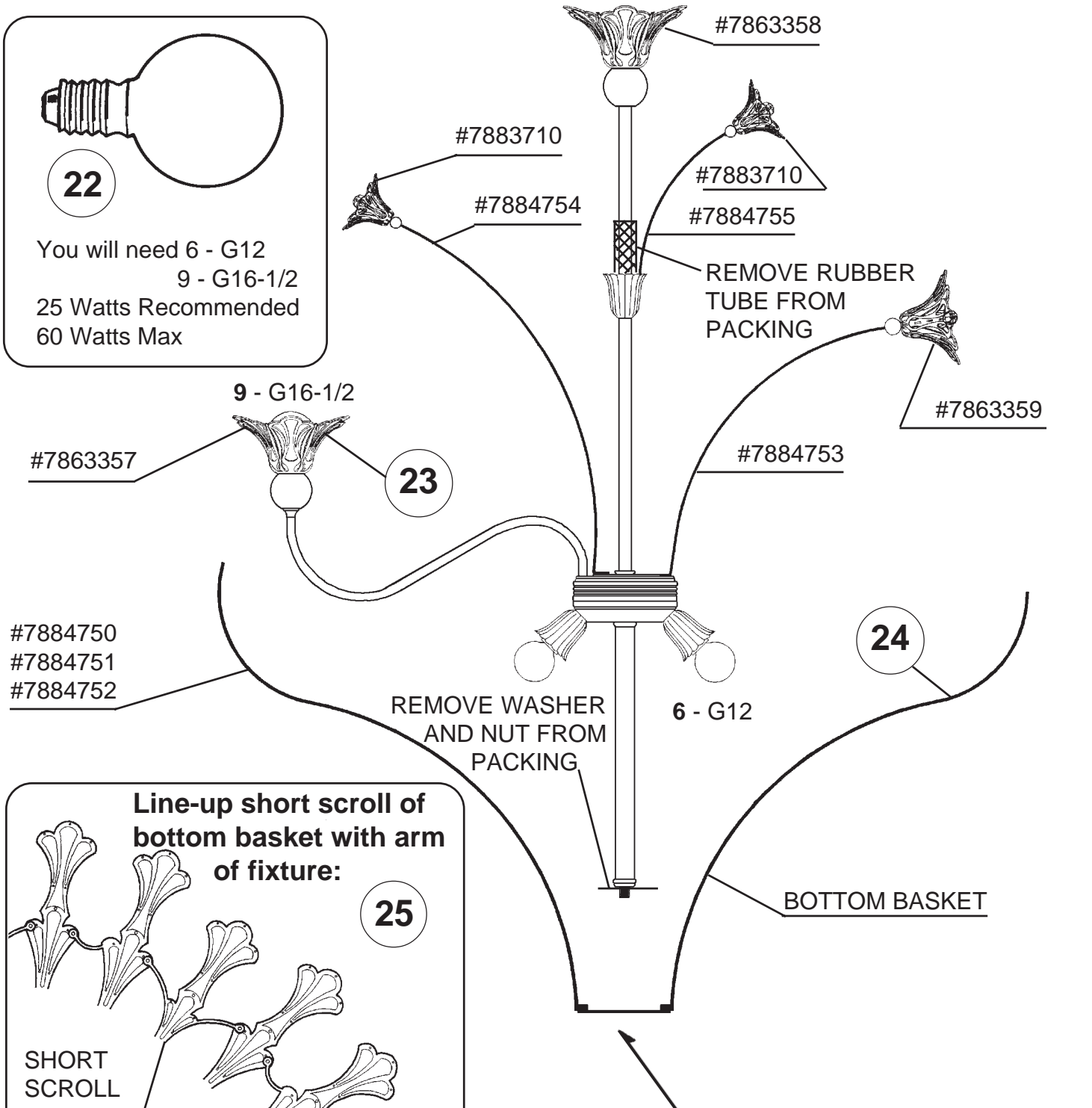
Instructions for crystal trimming

STEPS 22 - 27

22



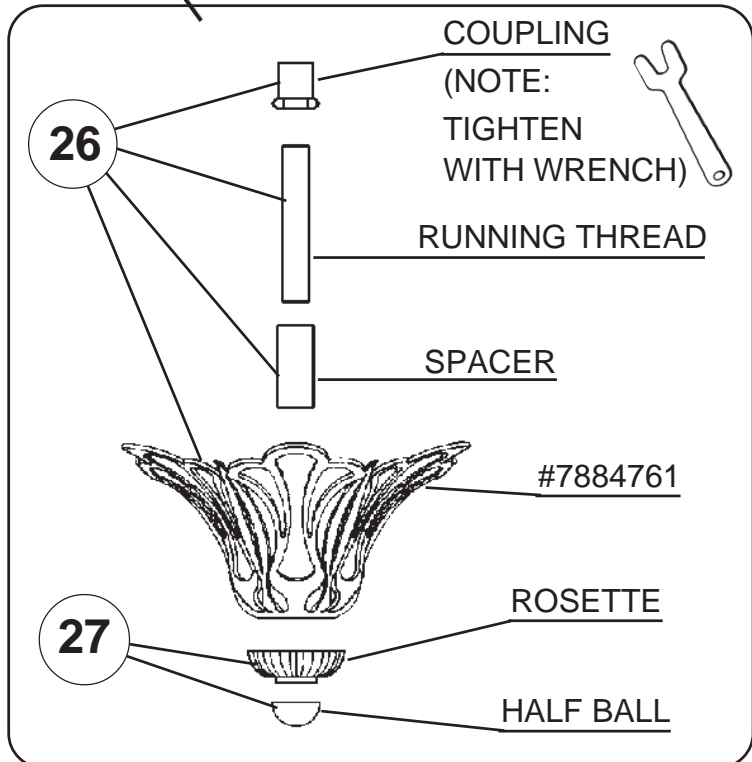
You will need 6 - G12
9 - G16-1/2
25 Watts Recommended
60 Watts Max



25

Line-up short scroll of bottom basket with arm of fixture:

SHORT SCROLL #7884750



PART NUMBERS FOR SPARE PARTS

